

## HGV TOOLS HGV 0006

# HGV TOOLS Scania PDE Injector Height Measuring Tool (OEM 99442) Instruction Manual

Model: HGV 0006 | OEM Reference: 99442

## 1. INTRODUCTION

This manual provides comprehensive instructions for the proper use and maintenance of the HGV TOOLS Scania PDE Injector Height Measuring Tool, OEM reference 99442. This specialized tool is designed for accurately setting PDE unit injectors in various Scania commercial vehicles.

The tool is essential for adjusting PDE injectors to a precise measurement of 69.9 mm, ensuring optimal engine performance and fuel efficiency. It is an integral part of routine maintenance for compatible Scania truck and bus models.

### 1.1. Compatibility

- **Scania Trucks:** 4 series (1994-2008), P, G, R, T series (2003-), L, P, G, R, S series (2016-)
- **Scania Buses:** 4 series (1994-2010), F, K, N series (2004-), P96 (1996-), E2011 (2010-)

## 2. SAFETY INFORMATION

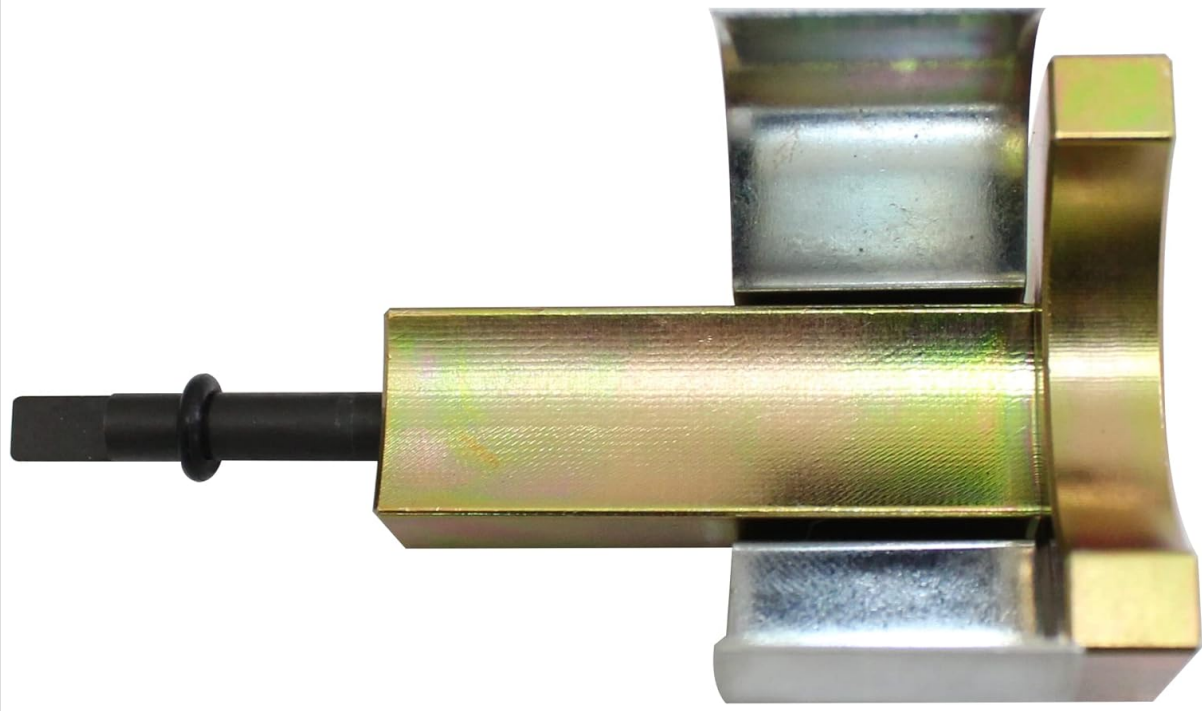
Always prioritize safety when working with vehicle components and specialized tools. Failure to follow safety guidelines can result in injury or damage to equipment.

- Wear appropriate personal protective equipment (PPE), including safety glasses and gloves.
- Ensure the vehicle is properly secured and the engine is off and cooled before beginning any work.
- Refer to the vehicle manufacturer's service manual for specific procedures and additional safety precautions related to injector adjustment.
- Keep the tool clean and free from oil or grease to maintain a secure grip.
- Do not use the tool for purposes other than its intended function.

## 3. PACKAGE CONTENTS

Verify that all components are present and undamaged upon receipt.

- 1 x HGV TOOLS Scania PDE Injector Height Measuring Tool (OEM 99442)



**Figure 1:** The HGV TOOLS Scania PDE Injector Height Measuring Tool. This image displays the complete tool, highlighting its robust construction and precise design for injector measurement.

## 4. SETUP

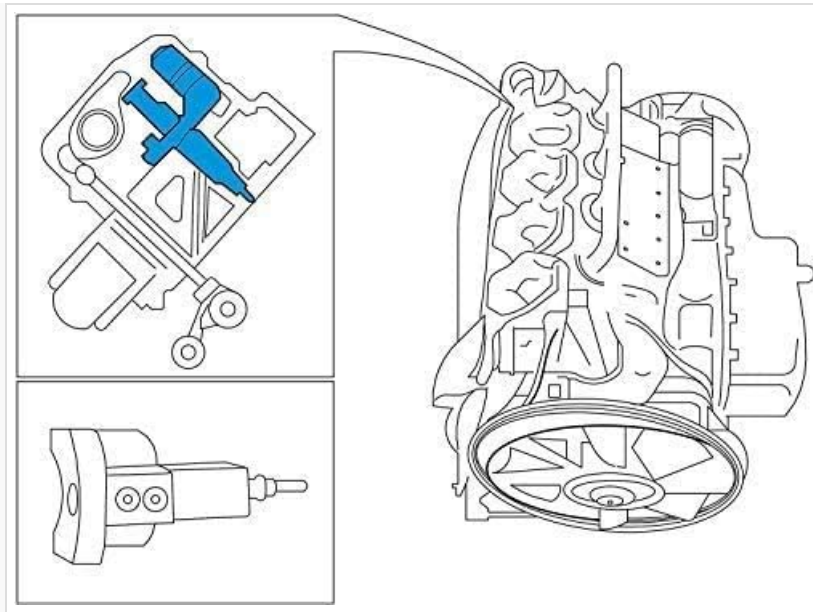
Before using the tool, ensure the work area is clean and well-lit. No specific assembly is required for this tool.

1. Ensure the PDE unit injector to be adjusted is accessible and clean.
2. Have the necessary vehicle service manual readily available for specific torque values and procedures.

## 5. OPERATING INSTRUCTIONS

This tool is used to accurately set the height of PDE unit injectors to 69.9 mm. Follow these steps carefully:

1. **Prepare the Injector:** Ensure the PDE unit injector is correctly installed in the cylinder head according to the Scania service manual.
2. **Position the Tool:** Place the HGV TOOLS measuring tool onto the PDE unit injector. The tool is designed to fit precisely over the injector, allowing for accurate measurement of its height.
3. **Adjust Injector Height:** Using the adjustment mechanism of the PDE injector (refer to the Scania service manual for specific adjustment points), carefully adjust the injector until the measuring tool indicates the correct height of 69.9 mm. The tool provides a fixed reference point for this measurement.
4. **Verify Measurement:** Double-check the measurement to ensure the injector is set to the specified 69.9 mm.
5. **Secure Injector:** Once the correct height is achieved, secure the injector according to the vehicle manufacturer's specifications, applying the correct torque values.
6. **Remove Tool:** Carefully remove the measuring tool from the injector.



**Figure 2:** Illustrative diagram of the PDE injector and the measuring tool's application. This diagram shows a schematic representation of a PDE injector within an engine component and how the measuring tool (highlighted in blue) interfaces with it for height adjustment.

## 6. MAINTENANCE

Proper maintenance ensures the longevity and accuracy of your measuring tool.

- **Cleaning:** After each use, wipe the tool clean with a dry, lint-free cloth to remove any oil, grease, or debris.
- **Storage:** Store the tool in a clean, dry environment, away from direct sunlight and extreme temperatures. Keep it in its original packaging or a protective case to prevent damage.
- **Inspection:** Periodically inspect the tool for any signs of wear, damage, or deformation. If any damage is found, discontinue use and contact HGV TOOLS for assistance.

## 7. TROUBLESHOOTING

This is a mechanical measuring tool with minimal components. Most issues arise from improper application or external factors.

- **Tool does not fit:** Ensure the tool is correctly oriented and the injector is the correct type for this tool (Scania PDE unit injectors). Verify vehicle compatibility with the list in Section 1.1.
- **Inaccurate measurement:** Ensure the tool and injector surfaces are clean and free of debris. Confirm the injector is fully seated before measurement.
- **Tool damage:** If the tool appears bent or damaged, its accuracy may be compromised. Do not attempt to repair it; contact HGV TOOLS for replacement or advice.

## 8. SPECIFICATIONS

Attribute	Detail
Manufacturer	HGV TOOLS
Model Number	HGV 0006
OEM Reference	99442

Intended Use	Setting PDE unit injector height to 69.9 mm
Item Weight	1 pound
Package Dimensions	3 x 3 x 3 inches

## 9. WARRANTY AND SUPPORT

---

For warranty information, technical support, or inquiries regarding this product, please contact HGV TOOLS directly through their official channels. Keep your purchase receipt as proof of purchase. HGV TOOLS is committed to providing high-quality aftermarket tools and customer satisfaction.

---