



Manuals.plus /

› iRV Technologies /

› iRV Technology iRV70 Blu-ray Disc Player User Manual

iRV Technologies IRV70

iRV Technology iRV70 Blu-ray Disc Player

USER MANUAL

Introduction

The iRV Technology iRV70 is a versatile car stereo and entertainment system designed for recreational vehicles (RVs). It offers a comprehensive range of features including Blu-ray disc playback, Bluetooth connectivity, HDMI with ARC support, AM/FM radio, and digital 5.1 surround sound output. The unit also features independent Zone 3 control, allowing for separate audio management in different areas, such as outdoor speakers.

This manual provides detailed instructions for the installation, operation, maintenance, and troubleshooting of your iRV70 system. Please read it thoroughly before using the product to ensure proper function and safety.

Safety Information

- Ensure the unit is installed by a qualified professional to prevent damage to the vehicle or the unit itself.
- Do not expose the unit to excessive moisture, rain, or extreme temperatures.
- Disconnect power before performing any maintenance or installation procedures.
- Use only the specified power supply and wiring harness.
- Keep discs clean and free from scratches to ensure optimal playback.

Product Overview

The iRV70 unit includes the main player, a remote control, a wiring harness, and this user manual. Below are images illustrating the various views and components of the iRV70 system.



Figure 1: Front view of the iRV70 Blu-ray Disc Player, showing the display, control buttons, volume knob, and disc slot.



Figure 2: Front view of the iRV70 with approximate dimensions (17 inches wide, 4 inches high) for installation planning.



Figure 3: Rear view of the iRV70, displaying various input/output ports including HDMI, optical, coaxial, and RCA audio/video connections.



Figure 4: Detailed wiring diagram showing connector pinouts for power, speaker zones (A, B, C), and various audio/video inputs and outputs.

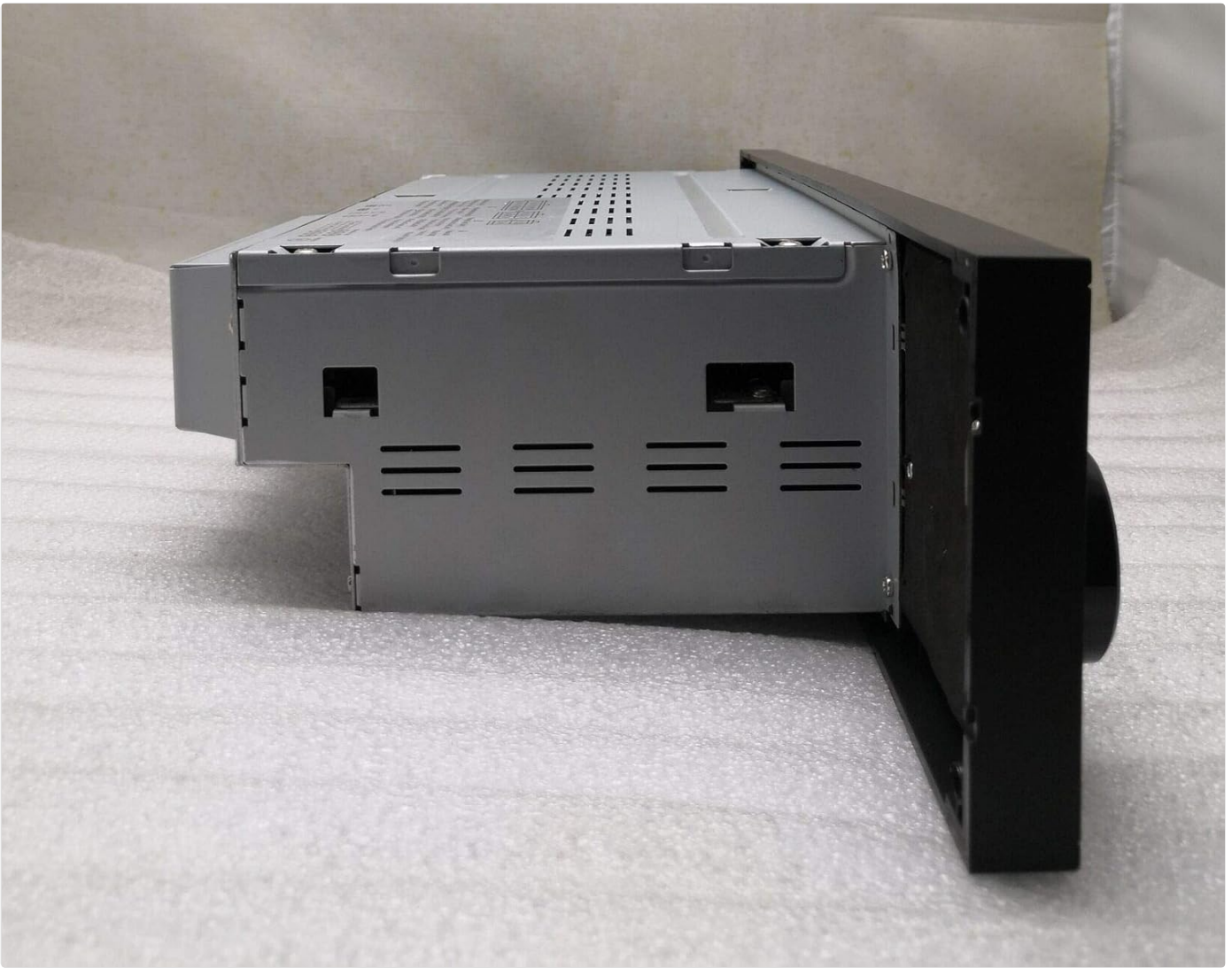


Figure 5: Left side view of the iRV70 unit, showing the chassis and mounting points.

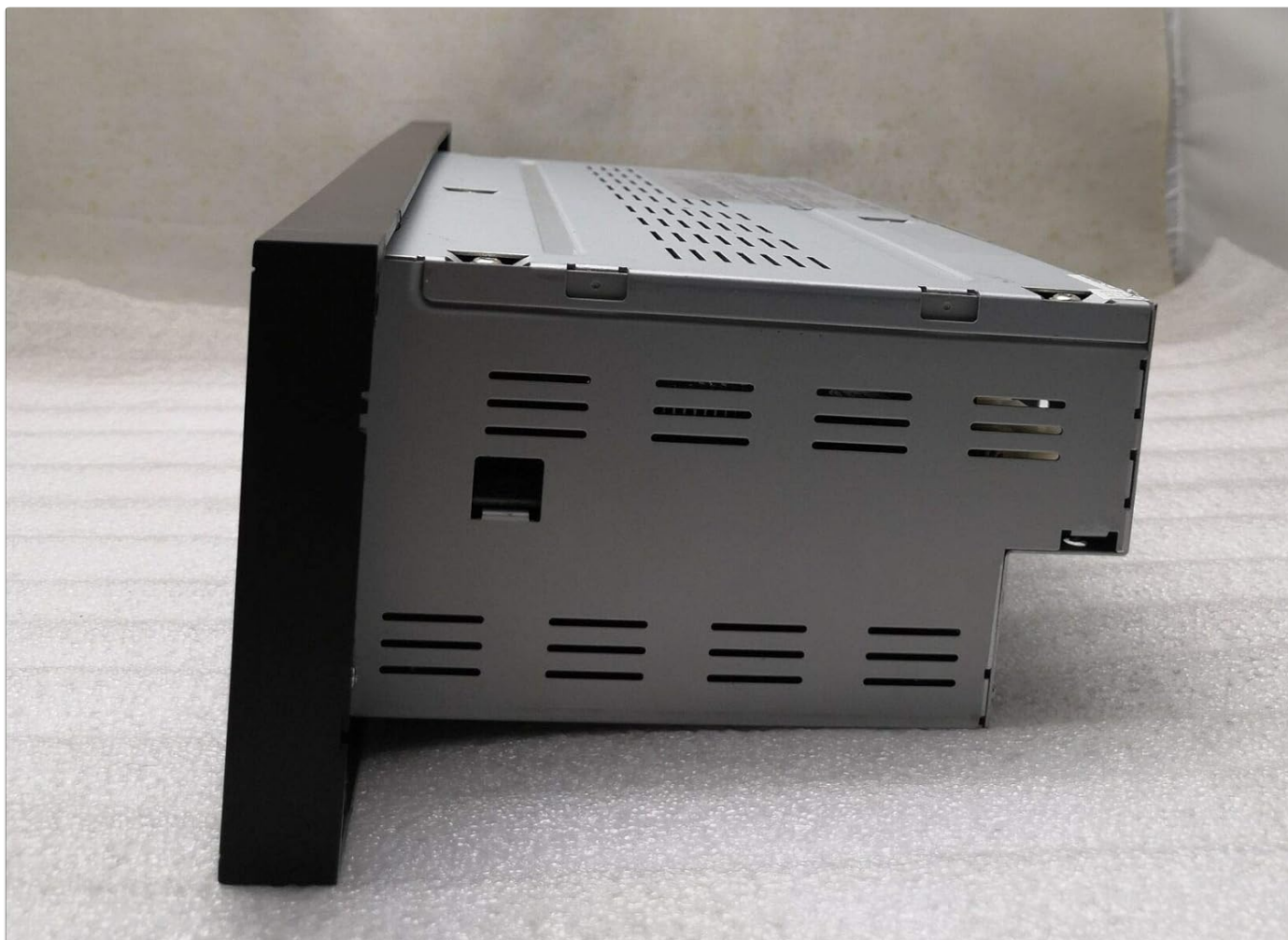


Figure 6: Right side view of the iRV70 unit, showing the chassis and mounting points.

Setup and Installation

The iRV70 is designed for wall mounting. Proper installation is crucial for optimal performance and safety. Refer to Figure 4 for detailed wiring connections.

Mounting

- Choose a suitable location within your RV that allows for proper ventilation and access to wiring.
- Ensure the mounting surface is sturdy enough to support the unit's weight (approximately 2.68 kg).
- Secure the unit using appropriate mounting hardware (not explicitly listed as included, but typically part of installation).

Wiring Connections

Connect the included wiring harness to the corresponding ports on the iRV70 and your vehicle's electrical system and speakers. Pay close attention to the polarity of speaker wires.

- **Power:** Connect the yellow (BAT), red (ACC), and black (GND) wires as indicated in the wiring diagram.
- **Speakers:** Connect speakers to the designated Zone 1, Zone 2, and Zone 3 outputs. Zone 3 is independent and can be used for outdoor speakers.
- **HDMI:** Use the HDMI input/output for video and ARC (Audio Return Channel) functionality to stream audio from a TV.
- **USB:** The USB port can be used for media playback and 5V charging for compatible devices.
- **NFC:** The NFC label facilitates quick Bluetooth pairing with compatible devices.
- **Antenna:** Connect your AM/FM antenna for radio reception.

Operating Instructions

Basic Controls

- **Power Button:** Press to turn the unit on or off.
- **Mute Button:** Temporarily mutes the audio output.
- **Volume Knob:** Rotate to adjust the master volume level.
- **Mode Button:** Cycles through available audio sources (e.g., AM/FM, CD/DVD, Blu-ray, USB, Bluetooth, HDMI).
- **AM/FM Button:** Directly selects the AM/FM radio tuner.
- **Clock Button:** Displays the current time. This function works in all modes, even when the unit is off.
- **BT Button:** Activates Bluetooth pairing mode.
- **Navigation Buttons:** Used for track skipping, fast forward/rewind, and menu navigation.
- **Numeric Buttons (1-6):** Used for direct track selection or radio station presets.

Media Playback

- **Disc Playback:** Insert Blu-ray, CD, or DVD discs into the disc slot. The unit will automatically detect the disc type and begin playback.
- **USB Playback:** Insert a USB drive into the USB port. The unit supports MP3 and MP4 formats.

Bluetooth Connectivity

The iRV70 supports Bluetooth for wireless audio streaming from your smartphone or other compatible devices.

- **NFC Pairing:** Tap your NFC-enabled smartphone to the NFC label on the unit for quick pairing.
- **Manual Pairing:** Press the BT button to enter pairing mode. Search for "iRV70" on your device's Bluetooth settings and connect.

HDMI with ARC

Connect your TV to the HDMI output with ARC function to stream audio from the TV through the iRV70's connected speakers.

Zone Control

The iRV70 features independent control for three audio zones. Zone 3's audio source can be controlled separately, making it ideal for outdoor speakers.

APP Control

A dedicated app is available for free on Android and Apple devices. This app transforms your smartphone into a wireless remote control for the iRV70 system.

For detailed instructions on specific functions and advanced settings, please refer to the on-screen menu or the dedicated app interface.

Maintenance

- **Cleaning:** Use a soft, dry cloth to clean the unit's exterior. Do not use abrasive cleaners or solvents.
- **Disc Care:** Handle discs by their edges. Clean dirty discs with a soft, lint-free cloth, wiping from the center outwards.
- **Ventilation:** Ensure the unit's vents are not obstructed to prevent overheating. The digital amplifier is designed for low heat, but proper airflow is still recommended.

Troubleshooting

If you encounter issues with your iRV70, please refer to the following common problems and solutions:

Problem	Possible Cause	Solution
No power	Loose power connection, blown fuse, vehicle battery issue.	Check all power connections. Inspect vehicle fuses and the unit's fuse (if accessible). Ensure vehicle battery is charged.
No sound output	Volume too low, mute activated, incorrect source selected, speaker wiring issue.	Increase volume. Deactivate mute. Select correct audio source. Check speaker connections and polarity.
Disc error / Disc not playing	Dirty or scratched disc, incompatible disc format, disc inserted incorrectly.	Clean the disc. Try a different disc. Ensure the disc is inserted correctly. Verify disc format compatibility.
Bluetooth pairing issues	Device too far, Bluetooth not enabled on device, unit not in pairing mode.	Ensure device is within range. Enable Bluetooth on your device. Press the BT button on the unit to enter pairing mode.
Remote control not working	Dead batteries, obstructed IR sensor.	Replace remote control batteries. Ensure no obstructions between remote and unit's IR sensor.

If the problem persists after attempting these solutions, please contact customer support.

Specifications

Feature	Specification
Brand	iRV Technologies
Model	IRV70
Model Name	RV Stereo DVD Player
Manufacturer	ATP Products Inc.
Product Dimensions (L x W x H)	43.18 x 20.02 x 10.16 cm (17 x 7.88 x 4 inches)
Item Weight	2.68 kg
Hardware Interface	USB, HDMI
Tuner Technology	AM/FM
Compatible Devices	Speaker, Headphone, Smartphone, Laptop, Tablet, MP3 Players, TV
Audio Output Mode	Surround
Speaker Surround Sound Channel Configuration	5.1
Output Wattage	50 Watts
Connector Type	Bluetooth, USB, HDMI, NFC
Media Type Supported	MP4, MP3, CD, DVD, Blu-ray, CD-R
Mounting Type	Wall Mount
Bluetooth Technology Support	Yes
Display Technology	LCD
Display Size	5 inches
Resolution	1920x1080

Warranty Information

Specific warranty details for the iRV70 Blu-ray Disc Player are not provided in this manual. Please refer to the product packaging, the official iRV Technologies website, or contact your retailer for comprehensive warranty information and terms.

Customer Support

For technical assistance, troubleshooting beyond this manual, or general inquiries regarding your iRV70 system, please contact iRV Technologies customer service. Contact information can typically be found on the manufacturer's official website or on the product packaging.