

[Manuals.plus](#) /

› [Oral-B](#) /

› Oral-B iO Series Gentle Care Electric Toothbrush Replacement Brush Heads User Manual

Oral-B iO RB SW-2

Oral-B iO Series Gentle Care Electric Toothbrush Replacement Brush Heads User Manual

Model: iO RB SW-2

Brand: Oral-B

INTRODUCTION

The Oral-B iO Series Gentle Care Replacement Brush Heads are designed to provide a gentle yet effective cleaning experience. These brush heads feature high-density, dentist-inspired extra soft bristles, optimized to adapt to the curves of teeth and gums for maximum comfort and plaque removal. This manual provides essential information for the proper use and maintenance of your Oral-B iO Gentle Care Replacement Brush Heads.



Image: Packaging of Oral-B iO Gentle Care Replacement Brush Heads alongside two individual brush heads, highlighting the product's appearance.

COMPATIBILITY

These replacement brush heads are specifically designed for use with Oral-B iO Electric Toothbrush Handles. They are not compatible with Oral-B Pro, Smart, or Genius electric toothbrush handles.

Compatible With All Oral-B iO™ Toothbrushes



Image: Several Oral-B iO electric toothbrush handles with the Gentle Care brush heads attached, illustrating compatibility across the iO series.

SETUP AND INSTALLATION

1. **Remove Old Brush Head:** Gently pull the existing brush head straight off the handle of your Oral-B iO electric toothbrush.
2. **Attach New Brush Head:** Align the new Oral-B iO Gentle Care Replacement Brush Head with the metal shaft on the toothbrush handle. Push the brush head firmly onto the shaft until it clicks into place.
3. **Verify Secure Fit:** Ensure the brush head is securely attached before use.



2

Replacement Brush Heads

Image: A close-up view of two Oral-B iO Gentle Care Replacement Brush Heads, emphasizing their design and the quantity included.

OPERATING INSTRUCTIONS

Once the brush head is attached, operate your Oral-B iO electric toothbrush as per its specific model instructions. The Gentle Care brush head is designed for a soft yet thorough cleaning.

- **Gentle Cleaning:** The extra soft bristles are optimized for sensitive gums and teeth, providing a comfortable brushing experience.
- **Plaque Removal:** The professionally inspired round brush head and high-density bristles are engineered to remove up to 100% more plaque compared to a regular manual toothbrush.



Image: A person demonstrating the use of an Oral-B iO electric toothbrush with the Gentle Care brush head, showing the brush in action against teeth and gums.

Thin Filaments Gently Clean To Protect Gums

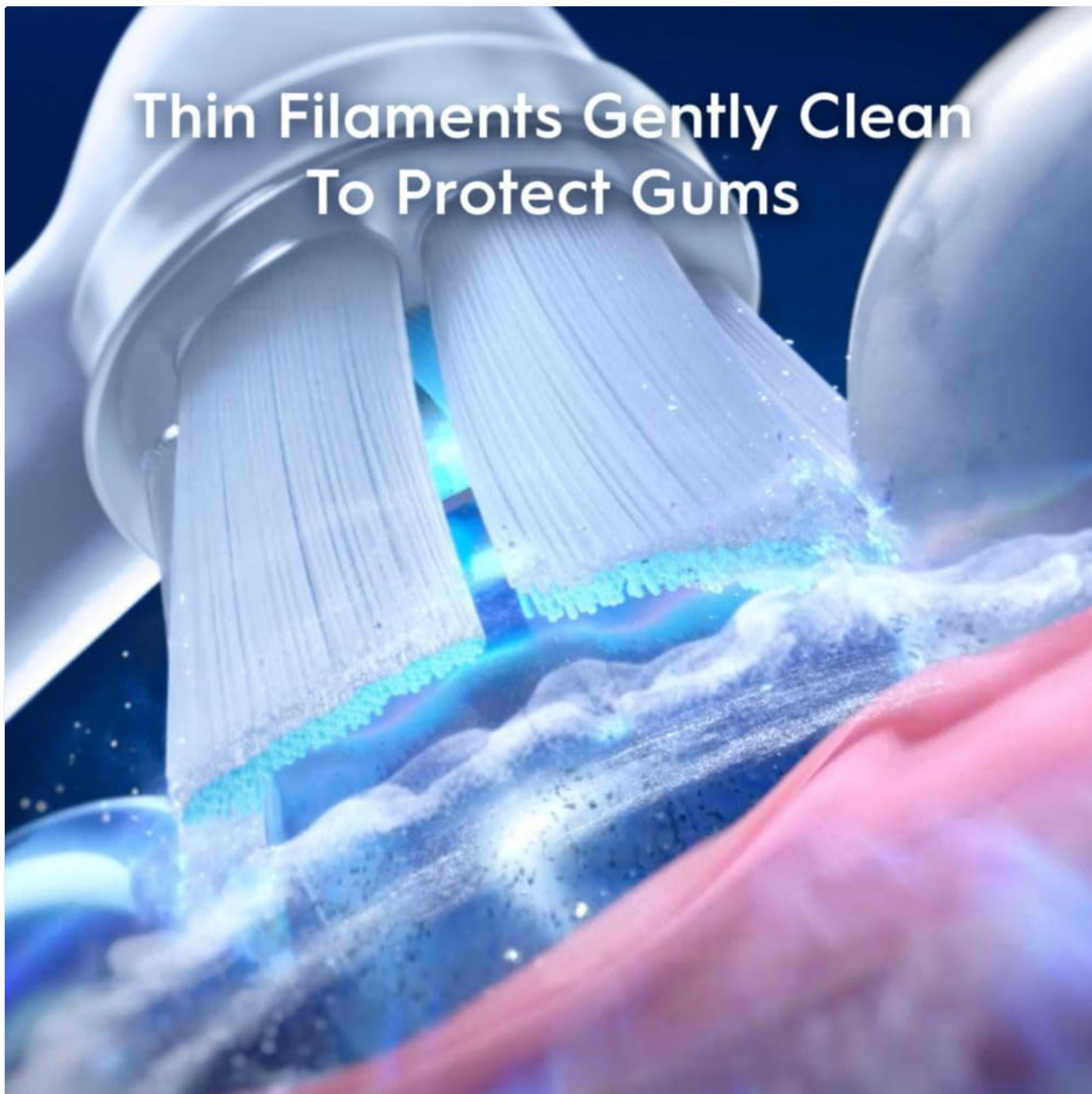


Image: A magnified view of the brush head's thin filaments reaching into the gumline, illustrating their gentle cleaning action.

High Density Bristles For A Gentle Clean

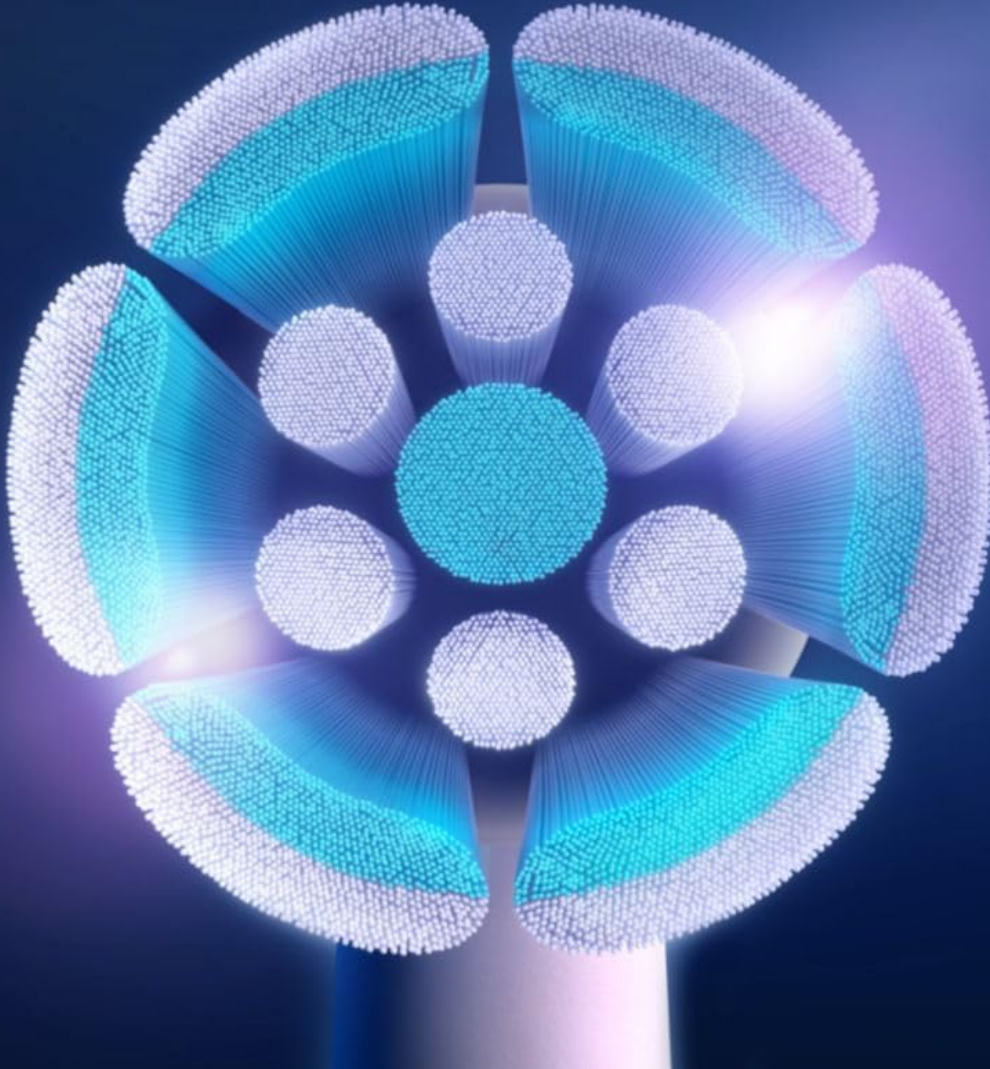


Image: An illustrative diagram showcasing the high-density arrangement of bristles on the Oral-B iO Gentle Care brush head, designed for a gentle yet thorough clean.

MAINTENANCE AND REPLACEMENT

For optimal performance and hygiene, it is crucial to maintain your brush heads properly and replace them regularly.

- **Rinsing:** After each use, rinse the brush head thoroughly under running water to remove toothpaste residue and debris.
- **Drying:** Allow the brush head to air dry in an upright position.
- **Replacement Schedule:** Dentists recommend changing your brush head every 3 months for best results.
- **Color-Changing Bristles:** The bristles on your Oral-B iO Gentle Care brush head are designed to change color over time, signaling when it's time for a replacement. When the blue bristles fade to white, it indicates that a new brush head is needed to maintain maximum cleaning effectiveness.
- **Early Replacement:** Replace the brush head sooner if it becomes worn or damaged.

SAFETY INFORMATION

- Do not use these brush heads on children under age 3.
- Replace brush head every 3 months or sooner if the brush head becomes worn.

SPECIFICATIONS

Attribute	Detail
Product Name	Oral-B iO Series Gentle Care Electric Toothbrush Replacement Brush Heads
Model Number	iO RB SW-2
Brand	Oral-B
Count	2 Count (Pack of 1)
Color	White
Material	Nylon
Product Dimensions	2.91 x 0.9 x 9.21 inches; 0.64 ounces
Manufacturer	Procter & Gamble
Age Range (Description)	Adult

ADDITIONAL INFORMATION

Oral-B is the #1 brand used by dentists worldwide, based on surveys of a representative worldwide sample of dentists carried out for P&G regularly. The Oral-B iO Series Gentle Care brush heads are also ADA Accepted, signifying their effectiveness and safety.



Image: The official "ADA Accepted" logo of the American Dental Association, indicating product endorsement.

WARRANTY AND SUPPORT

For information regarding product warranty, returns, or customer support, please refer to the official Oral-B website or contact Procter & Gamble customer service directly. Specific warranty details are typically provided with the original toothbrush handle purchase or on the manufacturer's official product pages.