

[Manuals.plus](#) /

› [Retekess](#) /

› Retekess TH104 Wireless Key Finder Instruction Manual

Retekess TH104

Retekess TH104 Wireless Key Finder Instruction Manual

Model: TH104 | Brand: Retekess

1. PRODUCT OVERVIEW

The Retekess TH104 Wireless Key Finder is designed to help locate misplaced items quickly and efficiently. This system includes a remote transmitter and multiple receivers that can be attached to various personal belongings. When a corresponding button on the transmitter is pressed, the associated receiver emits an 85 dB beeping sound, guiding you to your lost item. No smartphone application or complex setup is required, making it user-friendly for all ages.



The Reteless TH104 Key Finder system, illustrating the remote transmitter and six color-coded receivers attached to common items like keys, a pet, and a wallet, demonstrating its versatile tracking capabilities.

2. PACKAGE CONTENTS

The package includes the following components:

- 1 x TH104 Transmitter (Remote Control)
- 6 x TH104 Receivers (Item Tags)
- 6 x Key Rings
- 6 x Double-sided Adhesive Tapes
- 1 x Transmitter Base
- 7 x CR2032 Batteries (pre-installed)
- 1 x Black Opener (for battery replacement)
- 1 x English User Manual



A complete view of the Retekess TH104 Key Finder package contents, featuring the transmitter, six receivers, key rings, adhesive stickers, a battery replacement tool, and the user manual.

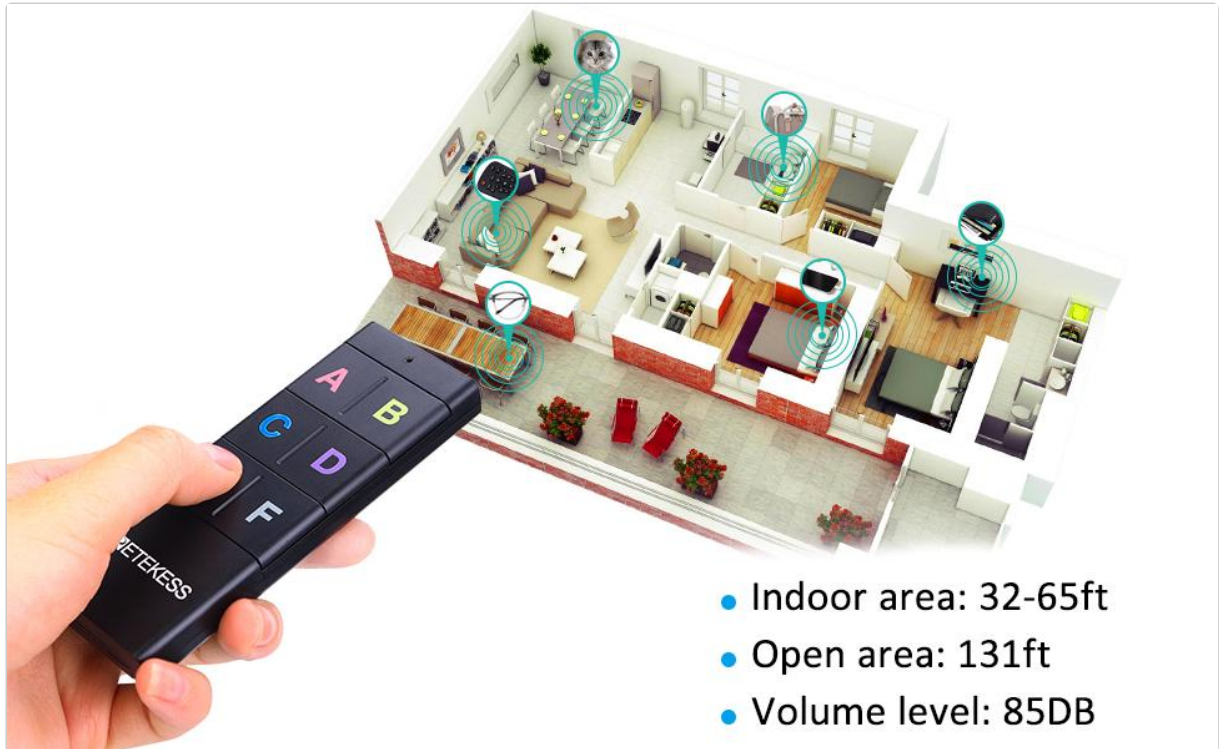
Your browser does not support the video tag.

An official video demonstrating the unboxing and initial setup of the Retekess TH104 Key Finder, including how to attach receivers to items and test their functionality.

3. SPECIFICATIONS

Feature	Detail
Brand	Retekess
Model	TH104
Connectivity Technology	RF (Radio Frequency)
Control Method	Remote
Number of Receivers	6
Audible Noise	85 dB
Working Range	Up to 131 feet (open area)
Battery Type	CR2032 Lithium Ion (included)
Battery Life	Approximately 6 months (average)
Product Dimensions (Receiver)	1.89" L x 1.3" W x 0.27" Th

Item Weight	160 Grams (total package)
Enclosure Material	Acrylonitrile Butadiene Styrene (ABS)



A visual representation of the Reteless TH104 Key Finder's effective range, illustrating how the signal can reach receivers in different rooms of a house, with an indoor range of 32-65ft and an open area range of 131ft.



Detailed measurements of the Reteless TH104 Key Finder transmitter and a single receiver, showing their compact size for easy attachment to various items.

4. SETUP

4.1 Unpacking and Initial Placement

1. Carefully remove all components from the packaging. Verify that all items listed in the "Package Contents" section are present.
2. Place the transmitter in its designated base on a stable surface, such as a desk or shelf, for easy access.

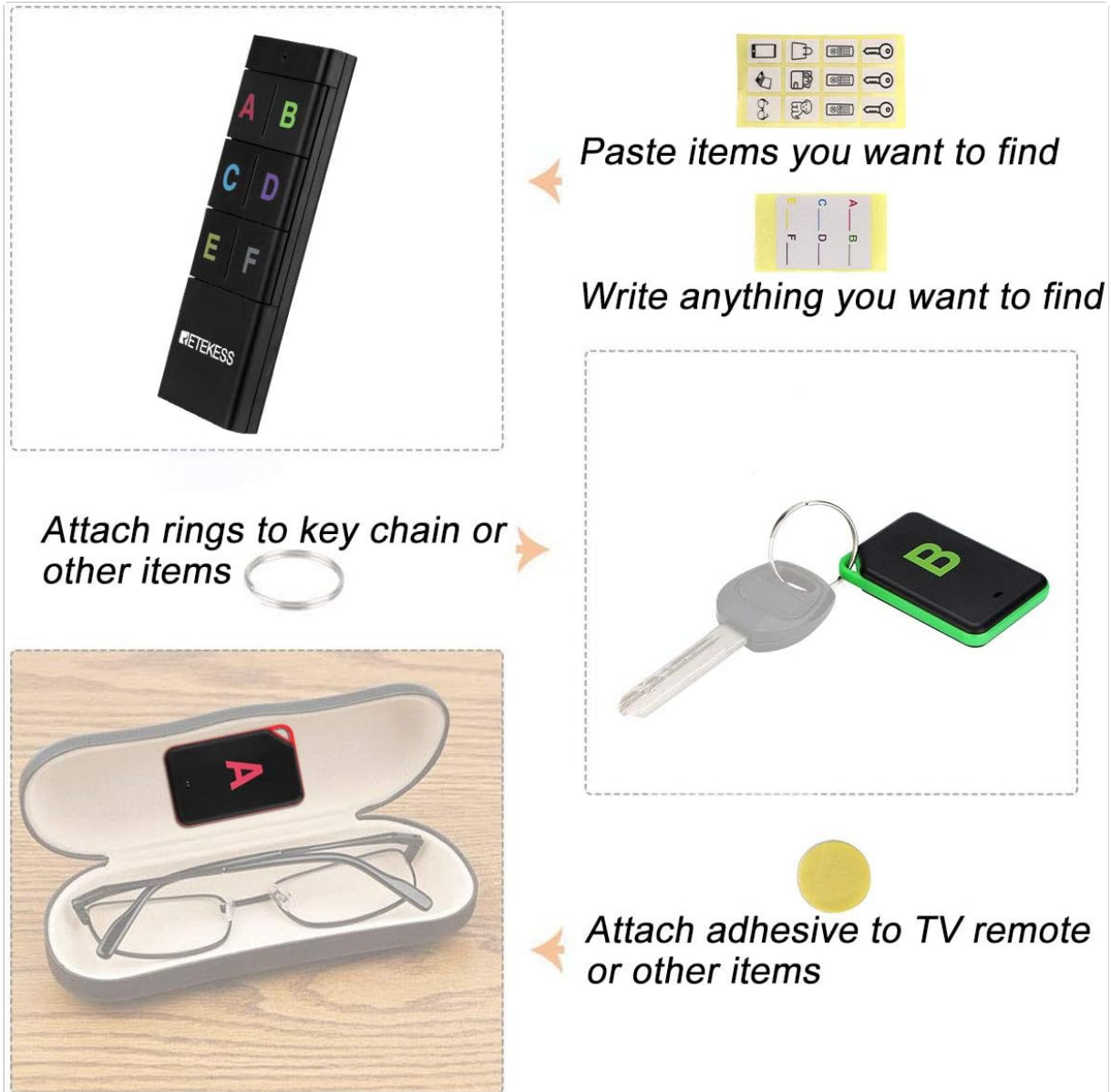
4.2 Attaching Receivers to Items

The receivers can be attached to various items using the provided accessories:

- **For Keys or Items with Loops:** Use the provided key rings to attach the receivers to your keys, pet

collars, or other items with attachment points.

- **For Flat Surfaces:** Use the double-sided adhesive tapes to secure receivers to items like TV remotes, phones, or wallets. Ensure the surface is clean and dry before applying the adhesive.



A visual guide demonstrating how to attach the Reteless TH104 receivers to items using key rings for keys and adhesive stickers for flat surfaces like a phone or glasses case.

4.3 Labeling Receivers

Utilize the included DIY stickers or custom text labels to clearly identify which item corresponds to each lettered button (A-F) on the transmitter. This helps in quickly locating the correct item.

4.4 Initial Power

The CR2032 batteries are pre-installed in both the transmitter and receivers. The system is ready for use upon unpacking.

5. OPERATION

Follow these steps to locate your misplaced items:

1. **Identify the Item:** Determine which item you need to locate.
2. **Press Corresponding Button:** On the transmitter, press the color-coded button (A, B, C, D, E, or F) that corresponds to the receiver attached to your lost item.
3. **Follow the Sound:** The activated receiver will emit an 85 dB beeping sound. Follow the sound to locate your item. The transmitter also features a small flashlight for convenience in dark environments.
4. **Range:** The system has a working range of up to 131 feet in open areas. Indoor range may vary depending on obstacles.



A hand pressing the 'C' button on the Reteless TH104 transmitter, indicating the process of activating a receiver to locate a lost item, such as keys.

6. MAINTENANCE

6.1 Battery Replacement (Receivers)

When a receiver's sound becomes weak or stops, it's time to replace its CR2032 battery:

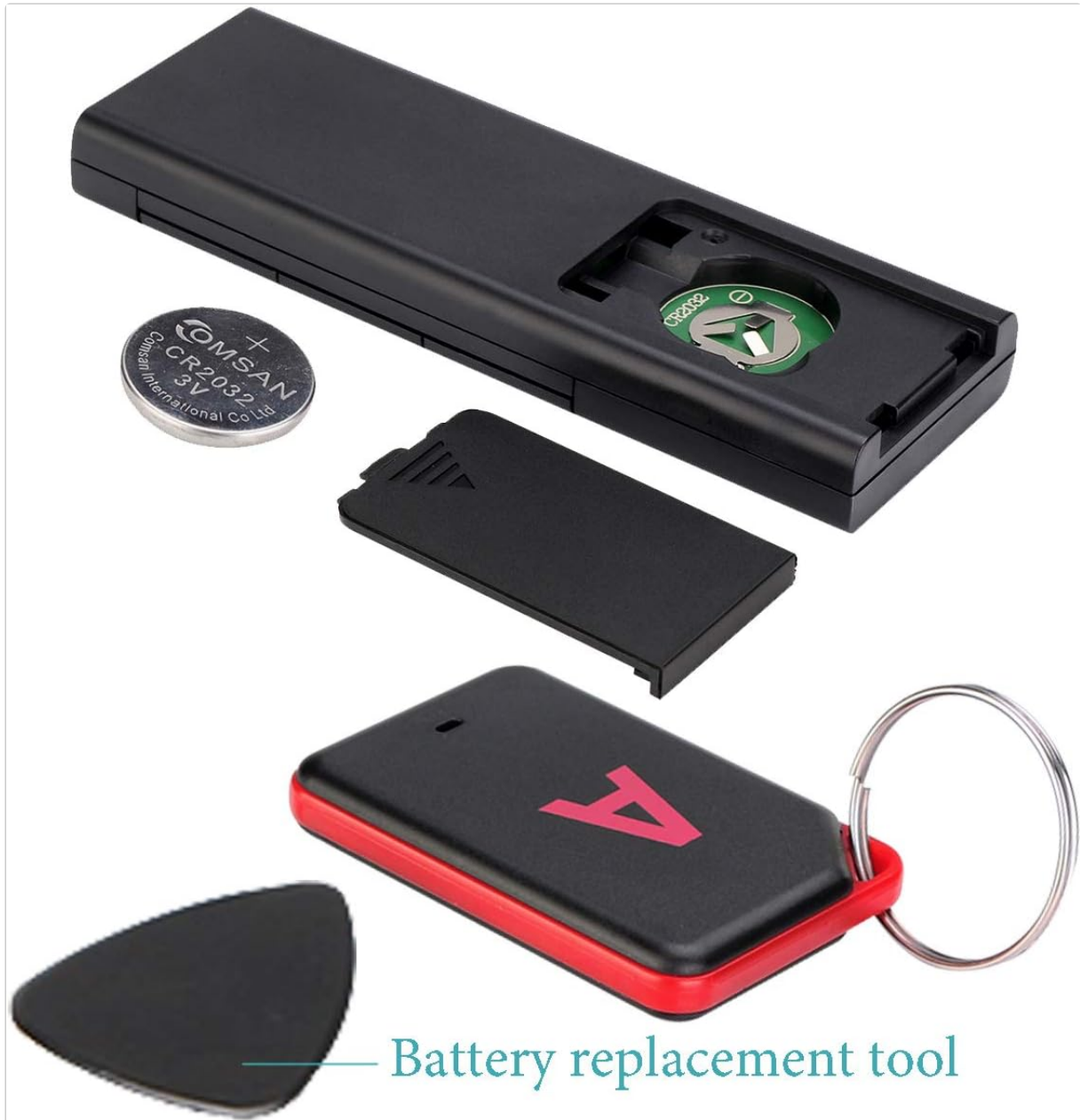
1. Use the provided black opener tool to gently pry open the receiver casing.
2. Remove the old CR2032 battery and insert a new one, ensuring the positive (+) side faces up.

3. Close the casing securely.

6.2 Battery Replacement (Transmitter)

If the transmitter's signal weakens or its indicator light does not illuminate, replace its CR2032 battery:

1. Locate the battery compartment on the back of the transmitter.
2. Open the compartment, remove the old battery, and insert a new CR2032 battery with the positive (+) side facing up.
3. Close the compartment.



A step-by-step illustration of how to replace the CR2032 battery in a Retekess TH104 receiver, showing the use of the black opener tool to access the battery compartment.



An image highlighting the average 6-month battery life of the Retekess TH104 Key Finder, emphasizing its long-lasting performance.

6.3 Cleaning

Wipe the transmitter and receivers with a soft, dry cloth to remove dust or dirt. Avoid using liquid cleaners.

7. TROUBLESHOOTING

If you encounter any issues with your Retekess TH104 Key Finder, refer to the following common problems and solutions:

- **No Sound from Receiver:**
 - Check if the correct button on the transmitter was pressed.
 - Ensure the receiver's battery is not depleted. Replace if necessary.
 - Verify the receiver is within the operating range (131 feet).
 - Check for obstructions that might block the signal.
- **Weak Sound:**
 - Replace the receiver's battery.
 - Ensure the speaker on the receiver is not covered or muffled.
- **Transmitter Not Responding:**
 - Replace the transmitter's battery.
 - Ensure no buttons are stuck.
- **Short Range:**
 - Ensure both transmitter and receiver have fresh batteries.
 - Reduce the number of walls or large objects between the transmitter and receiver.
 - Avoid using near strong electromagnetic interference.

8. WARRANTY AND SUPPORT

Retekess provides a **2-year warranty** for the TH104 Wireless Key Finder. Additionally, a **30-day no-reason return policy** is offered. Beyond the warranty period, maintenance services are available, with buyers responsible for associated costs.

For any issues, support, or warranty claims, please contact Retekess via Amazon email. They aim to respond within 12 hours. If product parts stop working within 1 year, contact them for a free replacement without needing to return the original parts.