

TCL 55R635

TCL 55-inch 6-Series 4K UHD Dolby Vision HDR QLED Roku Smart TV (Model 55R635) Instruction Manual

Model: 55R635 | Brand: TCL

1. INTRODUCTION

This manual provides essential information for setting up, operating, maintaining, and troubleshooting your TCL 55-inch 6-Series 4K UHD Dolby Vision HDR QLED Roku Smart TV (Model 55R635). The TCL 6-Series combines stunning 4K HDR and mini-LED technology in a brushed metal design for a superior viewing experience. Featuring Quantum Dot technology and the HDR Pro Pack with Dolby Vision, it delivers greater brightness, contrast, and a full palette of rich colors. TCL's Contrast Control Zone technology optimizes the image across individual zones for striking contrast. The AiPQ Engine uses machine-learning algorithms to optimize color, contrast, and clarity. Easy Voice Control and THX Certified Game Mode enhance usability and gaming performance. The integrated Roku OS provides seamless access to thousands of streaming channels and connected devices.

2. WHAT'S IN THE BOX

- TCL 55R635 4K UHD TV
- Power Cord
- Remote Control
- TV Stand (2 pieces)
- Quick Start Guide
- Warranty Information
- 3 AAA batteries (for remote)

3. SETUP INSTRUCTIONS

3.1 Attaching the TV Stand

1. Carefully place the TV face-down on a soft, clean surface to prevent damage.

2. Align the stand pieces with the screw holes on the bottom of the TV.
3. Secure the stands using the provided screws. Ensure they are firmly attached.



Image: TCL 55R635 TV with its included stand, showcasing its sleek design.

3.2 Connecting Power and Devices

1. Connect the power cord to the TV's power input and then to a wall outlet.
2. Connect your external devices (e.g., cable box, gaming console, Blu-ray player) to the appropriate HDMI ports on the TV. The TV features 4 HDMI inputs, including 1 eARC port.
3. For internet connectivity, connect an Ethernet cable to the LAN port or use Wi-Fi during the initial setup.

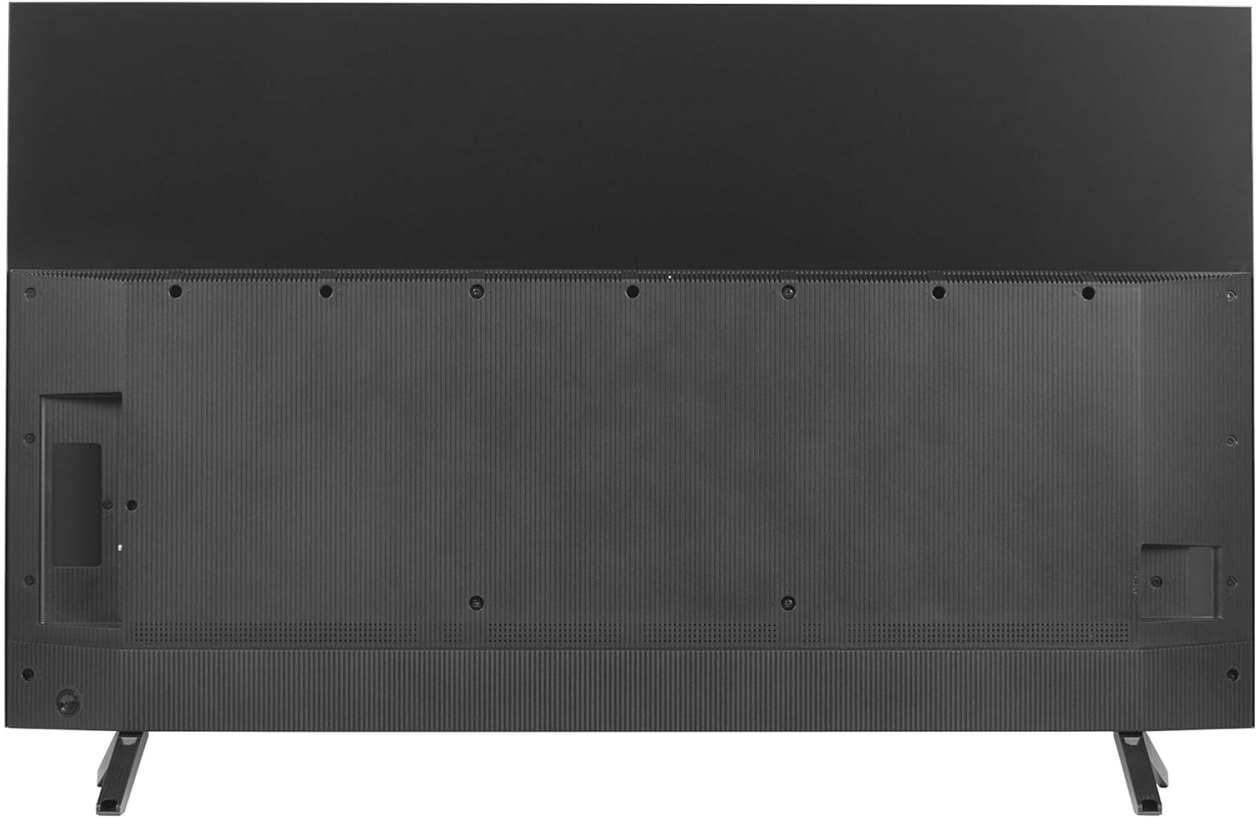


Image: Rear view of the TCL 55R635 TV, highlighting the various input ports including HDMI, USB, and Ethernet.

3.3 Initial Setup Wizard

1. Power on the TV using the remote control.
2. Follow the on-screen instructions to select your language, connect to your Wi-Fi network, and activate your Roku account.
3. The Roku OS will guide you through channel scanning (if using an antenna) and app installation.

Video: This video provides a comprehensive guide to setting up and reviewing the TCL 6-Series Smart TV, including initial power-on and basic navigation.

4. OPERATING INSTRUCTIONS

4.1 Roku OS Navigation

The TCL 55R635 uses the Roku OS for its smart TV functions. The home screen provides easy access to streaming channels, inputs, and settings. Use the directional pad on your remote to navigate through menus and select options.

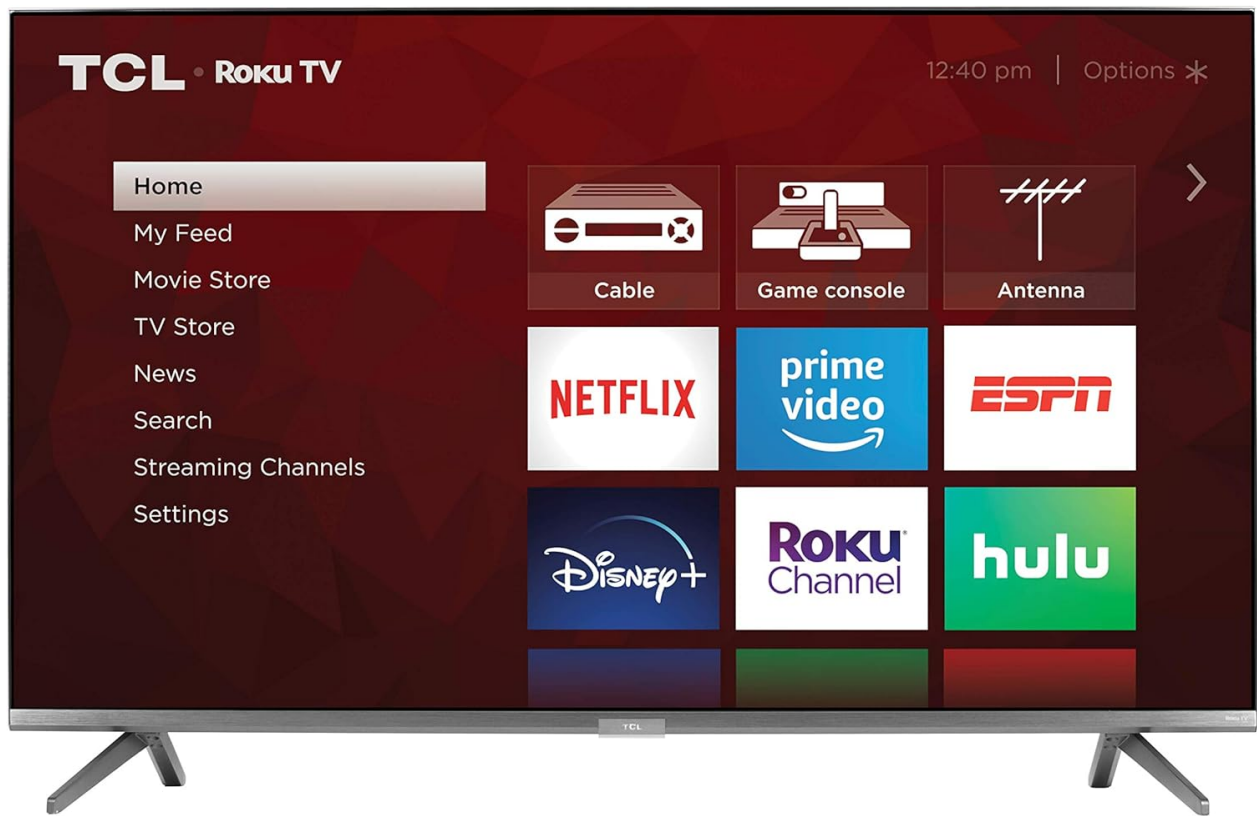


Image: The TCL Roku TV home screen displaying various streaming app icons and navigation options.

4.2 Remote Control Functions

The included remote control is designed for simplicity, with fewer buttons than traditional TV remotes. Key functions include power, volume, channel selection, home, back, and dedicated buttons for popular streaming services. The remote also supports voice control for convenient navigation and content search.

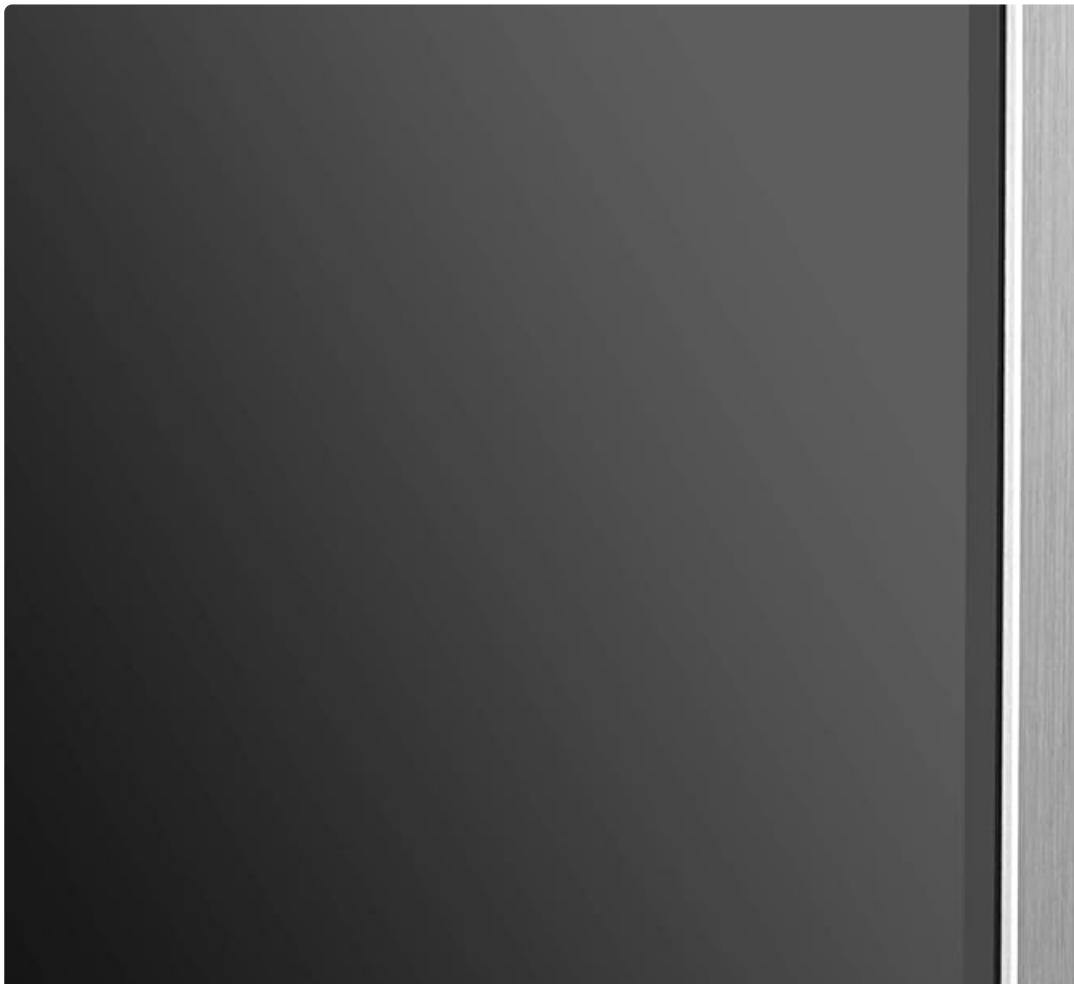




Image: The simplified remote control for the TCL Roku TV, featuring dedicated app buttons and voice control functionality.

4.3 Voice Control

Utilize the voice control feature on your remote or through the Roku mobile app to find movie titles, launch or change channels, and switch inputs using simple voice commands. The TV also works with Amazon Alexa or Google Assistant for integrated smart home control.

5. KEY FEATURES

- **Superior 4K Ultra HD:** Delivers picture clarity with the contrast, color, and detail of Dolby Vision HDR for a lifelike viewing experience. Panel Resolution: 3840 x 2160.
- **Mini-LED Technology:** Provides uncompromised contrast, brightness, and uniformity for incredible viewing in any environment.

Video: This video highlights the precision picture performance achieved through TCL's Mini-LED Technology, demonstrating

enhanced contrast and brightness.

- **QLED (Quantum Dot) Technology:** Ensures better brightness and wider color volume for a richer visual palette.
- **Contrast Control Zones:** Individually optimizes contrast across up to 240 localized zones, creating striking differences between bright and dark areas of the image.

Video: This video demonstrates TCL's Contrast Control Zones, illustrating how they enhance depth and contrast in various scenes.

- **AiPQ Engine:** Uses machine-learning algorithms for smart HDR, 4K upscaling, and contrast optimization, delivering an unrivaled 4K HDR experience.

Video: This video explains the AiPQ Engine's role in delivering smart picture quality through advanced processing.

- **THX Certified Game Mode:** Offers an optimal viewing experience for big-screen gaming, minimizing image smear, response time, and input lag. Includes Variable Refresh Rate (VRR) and Auto Game Mode.
- **4 HDMI Inputs (1 eARC):** Allows connection of all your favorite devices, with the eARC port providing enhanced audio return capabilities.

Video: This video demonstrates how to use the TCL iPQ Mobile Calibration App to achieve the best picture settings for your TV.

6. SPECIFICATIONS

Feature	Detail
Brand	TCL
Model Number	55R635
Screen Size	55 Inches
Display Technology	mini-QLED
Resolution	4K (3840 x 2160)
Refresh Rate	120 Hz
Special Features	AiPQ Engine, Smart HDR, 4K Upscaling, Smart Contrast, THX Certified Game Mode, Auto Game Mode, Easy Voice Control (Alexa/Google Assistant), QLED, Contrast Control Zones
Connectivity Technology	HDMI, USB, Wi-Fi
HDMI Inputs	4 (1 eARC)
Product Dimensions (with Stand)	48.3" W x 31.1" H x 13.7" D
Product Dimensions (without Stand)	48.3" W x 28.1" H x 2.8" D

Feature	Detail
Item Weight	43.7 Pounds
VESA Hole Pattern	300mm x 300mm

7. MAINTENANCE

7.1 Cleaning the Screen

Gently wipe the screen with a soft, lint-free cloth. For stubborn marks, lightly dampen the cloth with water or a screen-specific cleaning solution. Avoid harsh chemicals or abrasive materials.

7.2 Software Updates

Ensure your TV is connected to the internet to receive automatic software updates. These updates provide new features, performance improvements, and security enhancements. You can also manually check for updates in the Roku OS settings menu.

8. TROUBLESHOOTING

8.1 No Power

- Check if the power cord is securely connected to both the TV and the wall outlet.
- Ensure the wall outlet is functioning by plugging in another device.
- Try pressing the power button on the TV itself, not just the remote.

8.2 No Picture/Sound

- Verify that the correct input source is selected on your TV.
- Check all cable connections between your devices and the TV. Try unplugging and re-plugging them.
- Ensure the volume is not muted or set too low.

8.3 Network Connection Issues

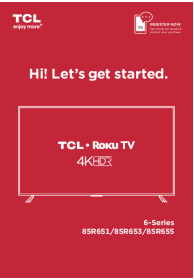
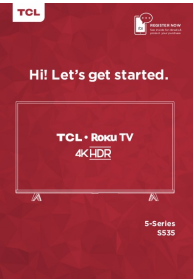
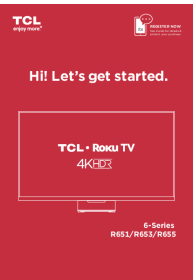
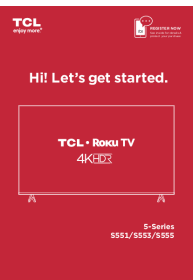
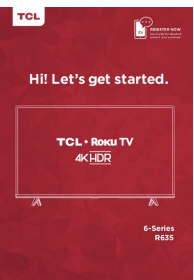
- Restart your router and modem.
- Go to the Roku OS settings and re-establish your Wi-Fi connection.
- If using an Ethernet connection, ensure the cable is properly connected.

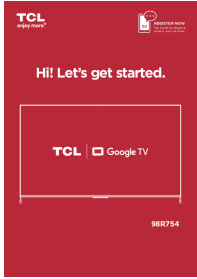
9. WARRANTY AND SUPPORT

Your TCL 55R635 TV comes with a limited warranty. Please refer to the included Warranty Information document for details regarding coverage, terms, and conditions. For further assistance, technical support, or service inquiries, please visit the official TCL support website or contact their customer service hotline.

Online Support: www.tcl.com/us/en/support

Related Documents - 55R635

	<p>TCL 6-Series 4K Roku TV Setup Guide: 85R651, 85R653, 85R655</p> <p>Comprehensive setup guide and important information for TCL 6-Series 4K Roku TVs (models 85R651, 85R653, 85R655), covering unboxing, installation, connections, setup, warranty, and troubleshooting.</p>
	<p>TCL 5-Series S535 Roku TV: Setup Guide and Features</p> <p>Get started with your TCL 5-Series S535 Roku TV. This guide covers setup, connectivity, 4K HDR features, Roku integration, troubleshooting, and warranty information for an enhanced home entertainment experience.</p>
	<p>TCL 6-Series Roku TV Quick Start Guide (R651/R653/R655)</p> <p>A comprehensive guide to setting up and using your TCL 6-Series Roku TV (models R651, R653, R655). Learn about registration, protection plans, safety, setup, features, troubleshooting, and warranty.</p>
	<p>TCL 5-Series 4K Roku TV Setup Guide: S551/S553/S555</p> <p>Comprehensive guide for setting up and using your TCL 5-Series 4K Roku TV (models S551, S553, S555). Includes registration, protection plan information, safety instructions, setup steps, remote control guide, connectivity options, troubleshooting, and warranty details.</p>
	<p>TCL 6-Series R635 Roku TV User Guide</p> <p>This guide provides setup instructions, safety information, and feature explanations for the TCL 6-Series R635 Roku TV, including connecting devices, using the remote, and accessing content.</p>



[TCL 98R754 Google TV Quick Start Guide and Warranty Information](#)

Comprehensive guide for setting up and using your TCL 98R754 Google TV, including installation, remote control, connectivity, troubleshooting, and warranty details.