

## CLY 60W LED Black Light (B0882RTTKC)

# CLY 60W LED Black Lights User Manual

Model: 60W LED Black Light (B0882RTTKC)

Brand: CLY

## INTRODUCTION

Thank you for choosing the CLY 60W LED Black Lights. This manual provides essential information for the safe and effective use of your new black lights. These high-efficiency UV flood lights are designed for various applications, including stage lighting, body paint events, fluorescent poster displays, aquariums, and neon glow parties. With their IP66 waterproof rating and durable construction, they are suitable for both indoor and outdoor environments.

## PRODUCT FEATURES

- **High Efficiency:** Equipped with 70 quality LED wicks, these 60W black lights offer high lighting efficiency and energy savings. The 120° wide beam angle ensures extensive coverage for large areas.
- **Durable Construction:** Featuring an IP66 waterproof rating, these floodlights are suitable for both indoor and outdoor use. The integrated metal backshell radiator and heat sink design provide efficient heat dissipation, preventing overheating.
- **Safe Wavelength:** The lights emit a wavelength of 395-400 nm, which is safe for human eyes and skin, as well as for children and pets. They are ideal for illuminating UV body paint and other fluorescent materials.
- **Easy Installation:** Designed for plug-and-play convenience, each black light comes with a standard US 3-prong plug, an independent ON/OFF switch, and a 1.5m (5ft) power cord. No complex wiring is required.
- **Flexible Mounting:** The lights can be placed on the ground or mounted on a wall, offering versatile placement options.



Image: Two CLY 60W LED Black Lights, showcasing their compact design and included power cords.



Image: Detailed diagram highlighting key features such as high-strength tempered glass, a 150-degree adjustable metal bracket, an integrated metal backshell radiator for heat dissipation, and a built-in Smart Power IC for enhanced stability and extended lamp life.



## Safety Information

- Please read and understand all safety instructions before using the CLY 60W LED Black Lights. Failure to follow these instructions may result in electric shock, fire, or serious injury.
- **Electrical Safety:** Ensure the power outlet matches the voltage requirements (120 Volts) of the black light. Do not use if the power cord or plug is damaged. Always plug into a grounded outlet.
  - **Waterproof Rating:** The product is IP66 waterproof, meaning it is protected against powerful water jets. While suitable for outdoor use, avoid submerging the unit in water.
  - **Heat Management:** The integrated heat sink is designed for efficient cooling. However, the unit may become warm during extended operation. Ensure adequate ventilation around the light and avoid covering it. Do not touch the light surface immediately after prolonged use.
  - **Eye Safety:** The 395-400 nm wavelength is generally safe for human eyes. However, avoid prolonged direct exposure to the light source, as intense light can cause discomfort. Do not stare directly into the LEDs.
  - **Placement:** Position the light on a stable surface or mount it securely to a wall. Keep away from flammable

materials.

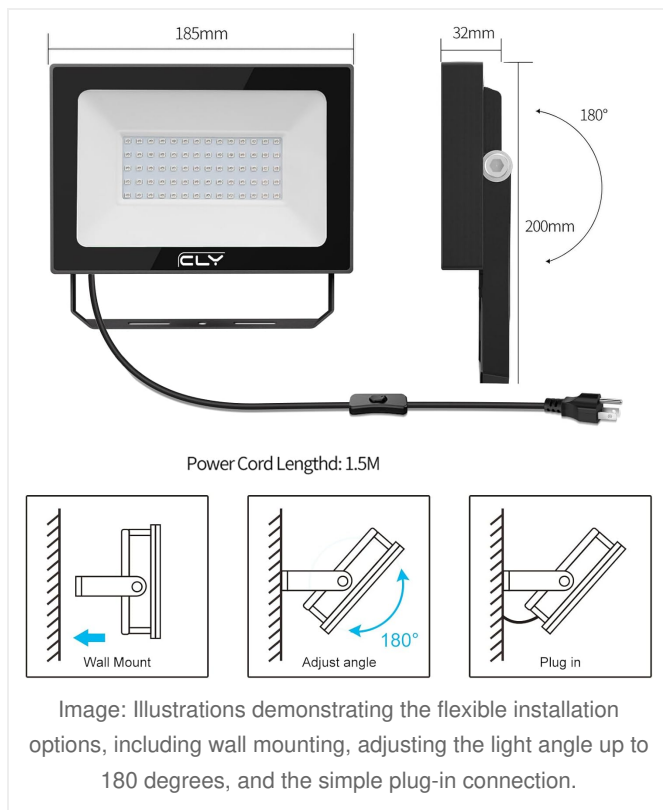
- **Children and Pets:** Keep the product out of reach of children and pets to prevent accidental damage or injury.

## SETUP

---

Setting up your CLY 60W LED Black Light is straightforward due to its plug-and-play design.

1. **Unpack:** Carefully remove the black light from its packaging. Inspect for any signs of damage.
2. **Placement:** Choose a suitable location for the light. It can be placed on a flat surface or mounted to a wall.
3. **Mounting (Optional):** If wall mounting, use appropriate screws and anchors (not included) to secure the bracket to a sturdy surface. The bracket allows for a 180-degree adjustment to direct the light as needed. Ensure the bracket is securely fastened before adjusting the light angle.
4. **Connect Power:** Plug the standard US 3-prong power cord into a compatible 120V AC grounded electrical outlet. The power cord length is 1.5 meters (5 feet).
5. **Power On:** Use the independent ON/OFF switch located on the power cord to turn the light on.



## OPERATING INSTRUCTIONS

---

Operating the CLY 60W LED Black Light is simple:

1. **Power On/Off:** Locate the ON/OFF switch on the power cord. Flip the switch to the 'ON' position to activate the black light. Flip it to 'OFF' to turn it off.
2. **Adjust Angle:** If mounted, you can adjust the angle of the light by loosening the side screws on the bracket, setting the desired angle, and then tightening the screws to secure it.
3. **Observe Effect:** The black light will illuminate fluorescent materials, making them glow in the dark. Note that while the light is powerful, it is designed to be a UV light source and may appear dim compared to common visible lights.



Image: A side-by-side comparison demonstrating the effect of the black light. On the left, the room is dark with the black light off. On the right, with the black light on, fluorescent objects like a shark sculpture and pathways glow vibrantly.



Image: An illuminated scene under black light, with text indicating the 60W UV Black Light's wavelength of 395-400 NM, confirming it is safe for human eyes and skin. It also notes that visible light is a bit dim compared to common light sources.

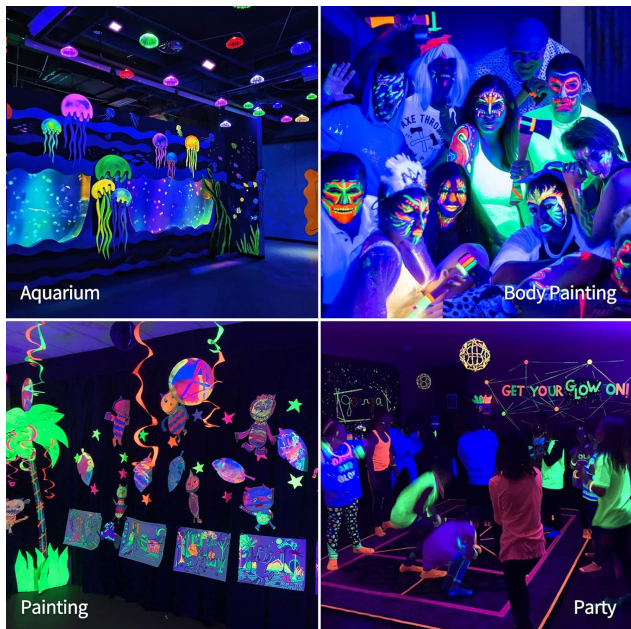


Image: A collage showcasing various applications of the black light, including illuminating an aquarium, enhancing body painting, creating glowing art for painting, and setting the atmosphere for a glow party.

## MAINTENANCE

Proper maintenance ensures the longevity and optimal performance of your CLY 60W LED Black Lights.

- **Cleaning:** Disconnect the power before cleaning. Use a soft, damp cloth to wipe the exterior of the light. Do not use abrasive cleaners or solvents.
- **Heat Dissipation:** The light is designed with an efficient heat sink. Ensure that the heat sink fins on the back of the unit are not obstructed to allow for proper airflow and cooling.
- **Storage:** When not in use for extended periods, store the black light in a cool, dry place, away from direct sunlight and extreme temperatures.
- **Inspection:** Periodically inspect the power cord and plug for any signs of damage. If damage is found, discontinue use and contact customer support.

## TROUBLESHOOTING

If you encounter issues with your CLY 60W LED Black Lights, refer to the following common problems and solutions:

Problem	Possible Cause	Solution
Light does not turn on.	No power to the outlet. ON/OFF switch is in the 'OFF' position. Damaged power cord or plug.	Check if the outlet is working by plugging in another device. Ensure the ON/OFF switch is flipped to 'ON'. Inspect the cord and plug for damage. If damaged, do not use and contact support.



Problem	Possible Cause	Solution
Light appears dim or not as expected.	Misconception of black light intensity. Ambient light interference.	Black lights emit UV light, which is less visible than white light. The effect is primarily on fluorescent materials. For best results, use in a dark environment with minimal ambient light.
Unit gets hot during operation.	Normal operation. Obstructed heat dissipation.	It is normal for the unit to warm up. The heat sink is designed to manage this. Ensure the heat sink fins are not blocked and there is adequate ventilation around the light.
Difficulty adjusting the bracket.	Screws are too tight. Incorrect tool used.	Loosen the side screws on the bracket using an appropriate wrench or tool. Do not force adjustment if screws are tight. If the bracket cannot be adjusted, ensure the correct tool is used for the specific screw type.

## SPECIFICATIONS

Brand	CLY
Model	60W LED Black Light (B0882RTTKC)
Power Source	Corded Electric
Voltage	120 Volts
Wattage	60 Watts
Light Source Type	Light Emitting Diode (LED)
Wavelength	395-400 nm
Beam Angle	120°
Waterproof Rating	IP66
Material	Glass, Metal
Color	Black
Product Dimensions (L x W x H)	7.28" x 7.87" x 1.25" (185mm x 200mm x 32mm)
Item Weight	3.76 pounds
Power Cord Length	1.5m (5ft)
Mounting Type	Wall Mount / Ground Placement

## WARRANTY AND SUPPORT

CLY is committed to providing high-quality products and excellent customer service. Your CLY 60W LED Black Lights come with a worry-free after-sales service.

- **Customer Support:** If you have any questions, concerns, or require professional guidance regarding your product, please do not hesitate to contact CLY customer support. Refer to your purchase documentation or the CLY official website for contact information.
- **Warranty Information:** Specific warranty details may vary. Please retain your proof of purchase for any warranty claims.