

[Manuals.plus](#) /

› [WHLED](#) /

› WHLED 100W LED Flood Light Instruction Manual

## WHLED 738944819098

# WHLED 100W LED Flood Light Instruction Manual

Model: 738944819098 | Brand: WHLED

## 1. INTRODUCTION

---

This manual provides detailed instructions for the safe installation, operation, and maintenance of your WHLED 100W LED Flood Light. Please read this manual thoroughly before installation and retain it for future reference. This product is designed for outdoor use, featuring a durable, waterproof construction and a dusk-to-dawn photocell sensor for automated operation.



*Image 1.1: WHLED 100W LED Flood Light units with mounting accessories.*

## 2. SAFETY INFORMATION

---

- **Electrical Safety:** Installation must be performed by a qualified electrician or in accordance with local electrical codes. Ensure power is disconnected at the circuit breaker before installation or maintenance.
- **Grounding:** This fixture must be properly grounded to prevent potential electrical shock.
- **Voltage:** Verify that the supply voltage matches the fixture's requirements (100-277V).
- **Mounting:** Securely mount the fixture to a stable surface capable of supporting its weight.
- **Temperature:** Do not operate the fixture outside its specified temperature range (-4°F to 113°F).
- **Light Source:** Do not stare directly into the LED light source when illuminated, as it may cause eye strain.

## 3. PACKAGE CONTENTS

---

Please verify that all components are present before beginning installation:

- 1pc Plate (for wall mounting)
- 1pc Spacer

- 1pc Black Cap (for disabling photocell)
- 3pcs Terminal Caps (wire nuts)
- 3pcs Screws

#### 4. PRODUCT FEATURES

- **Versatile Mounting:** Equipped with 180° adjustable knuckle mounting and a plate for wall mounting, allowing flexible installation and angle adjustment.
- **High Brightness & Wide Coverage:** 100W, 5000K daylight LED producing 14,000 lumens with a 120-degree beam angle and 180-degree rotatable light heads for extensive illumination.
- **Durable & Reliable:** Constructed from die-casting aluminum with wide radiators for excellent corrosion resistance and heat dissipation. Operates effectively in temperatures from -4°F to 113°F.
- **IP65 Waterproof:** Guarder Series LED Flood Light is IP65 rated, suitable for indoor and outdoor wet locations, including backyards, gardens, garages, and parking lots.
- **ETL Certified:** Ensures product safety and reliability.



# 100W LED FLOOD LIGHT




			
Wattage <b>100W</b>	Brightness <b>14000Lumen</b>	Daylight <b>5000K</b>	Voltage <b>100-277 VAC</b>
			
Hours Lifetime <b>60,000</b>	Warranty <b>5 Years</b>	Waterproof <b>IP65</b>	Photocell Sensor <b>Dusk to Dawn</b>

Image 4.1: Key features of the WHLED 100W LED Flood Light.

## 5. SPECIFICATIONS

Specification	Detail
Brand	WHLED
Model Number	738944819098
Wattage	100 Watts
Brightness	14000 Lumens
Color Temperature	5000 Kelvin (Daylight)
Voltage	100-277 Volts AC
Water Resistance Level	IP65 Waterproof
Material	Aluminum, Polycarbonate
Special Feature	Dusk to Dawn Photocell Sensor
Average Life	50,000 Hours
Product Dimensions	5.9"L x 2.55"W x 8.46"H
Item Weight	4.55 pounds

## 6. INSTALLATION

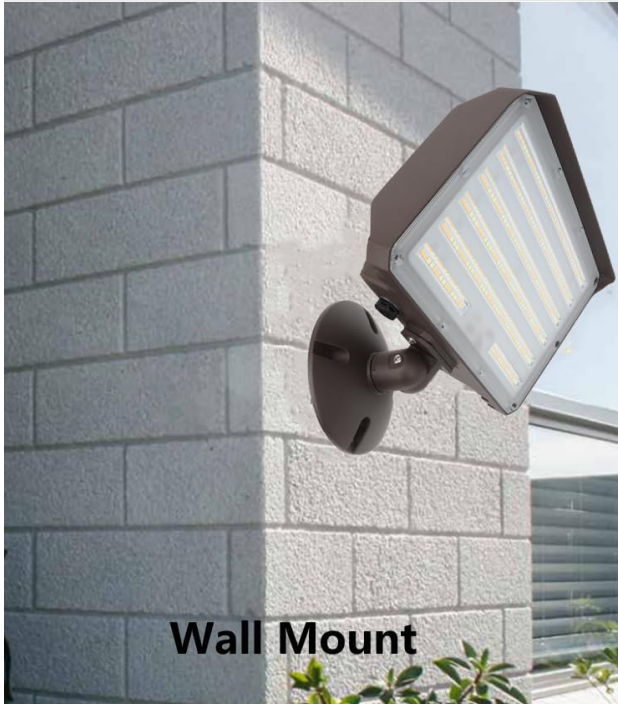
Before installation, ensure the power supply is turned off at the circuit breaker. This fixture supports both knuckle mount and wall mount installations.

### 6.1 Mounting Options

The flood light comes with an adjustable knuckle mount and a separate plate for wall mounting. The knuckle mount allows for direct screwing onto a junction box or pole, while the plate provides a flat surface for wall attachment.

# INSTALLATION

2 alternative installation options



**Wall Mount**



**Knuckle Mount**

Can be directly screwed

**180° vertical adjustment**



90 degree



135 degree



180 degree

*Image 6.1: Illustration of wall mount and knuckle mount options with angle adjustment.*

## 6.2 Wiring Instructions

Follow these steps for electrical connection:

1. Open the junction box where the light will be installed.
2. Run the fixture's wires through the mounting hole.
3. Connect the wires:
  - **Black wire:** Connect to the Live (L) wire from the power supply.
  - **White wire:** Connect to the Neutral (N) wire from the power supply.
  - **Green wire:** Connect to the Ground (GND) wire from the power supply.

Use the provided terminal caps (wire nuts) to secure connections.

4. Fix the flood light securely to the mounting surface.
5. Adjust the angle of the light fixture as needed. The knuckle mount allows for 180° vertical adjustment.
6. Tighten all screws to ensure stability.

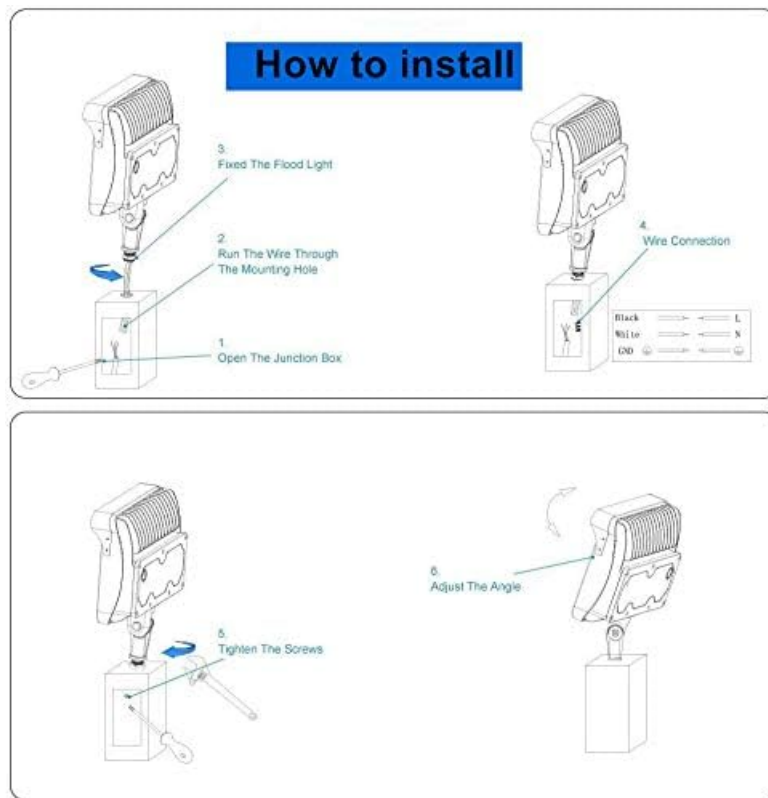


Image 6.2: Step-by-step wiring and installation diagram.

### 6.3 Installation Video Reference

Your browser does not support the video tag.

*Video 6.1: This video demonstrates the wall mount and knuckle mount installation process for the outdoor LED flood light.*

## 7. OPERATING INSTRUCTIONS

### 7.1 Dusk to Dawn Photocell Function

The WHLED Flood Light features a built-in photocell sensor that automatically detects ambient light levels. This enables the light to turn on at dusk and turn off at dawn, providing automated security and convenience.

# Dusk to Dawn & Manual Control in One



Image 7.1: Dusk to Dawn photocell operation and manual override.

## 7.2 Disabling the Photocell Sensor

If continuous illumination is desired, or if the automatic dusk-to-dawn function is not required, the photocell sensor can be disabled. Use the provided black cap to cover the photocell sensor located on the fixture. This will keep the light on whenever power is supplied to the fixture.

Your browser does not support the video tag.

*Video 7.1: This video demonstrates the features of the flood light, including the photocell sensor and how to disable it with the black cap.*

## 8. MAINTENANCE

Regular maintenance ensures optimal performance and longevity of your flood light.

- **Cleaning:** Periodically clean the lens and housing with a soft, damp cloth to remove dirt, dust, and debris. Do not use abrasive cleaners or solvents.
- **Inspection:** Annually inspect the wiring and mounting hardware for any signs of wear, corrosion, or damage. Ensure all connections remain secure.
- **Photocell:** Keep the photocell sensor clean and unobstructed to ensure proper dusk-to-dawn operation.

## 9. TROUBLESHOOTING

---

If you encounter issues with your WHLED Flood Light, refer to the following common problems and solutions:

- **Light does not turn on:**

- Check the power supply at the circuit breaker.
- Verify all wiring connections are secure and correct.
- Ensure the photocell sensor is not covered by the black cap if automatic operation is desired.
- Confirm the ambient light level is low enough for the photocell to activate.

- **Light stays on during the day:**

- Check if the black cap is covering the photocell sensor. Remove it if automatic operation is desired.
- Ensure the photocell sensor is not obstructed by dirt, debris, or external light sources (e.g., another light fixture).
- Verify the ambient light level is sufficient for the photocell to deactivate.

- **Light flickers or dims:**

- Check for loose wiring connections.
- Ensure the voltage supply is stable and within the specified range.
- If the issue persists, contact customer support.

## 10. WARRANTY AND SUPPORT

---

The WHLED 100W LED Flood Light is covered by a **5-year warranty** from the date of purchase. This warranty covers defects in materials and workmanship under normal use.

For warranty claims, technical assistance, or any questions regarding your product, please contact WHLED customer support through the retailer's platform or the official WHLED website. Please have your purchase receipt and model number available when contacting support.