

## IPD IPH-160

# IPD IPH-160 Headset Instruction Manual

Monaural Wired Headset with Noise Cancelling Microphone and 3.5mm Jack

## 1. INTRODUCTION

This manual provides instructions for the proper setup, operation, and maintenance of your IPD IPH-160 Monaural Wired Headset. The IPH-160 is designed for clear communication in various environments, featuring a noise-cancelling microphone and a 3.5mm jack for broad compatibility.

## 2. PACKAGE CONTENTS

Please verify that all items are present in your package:

- IPD IPH-160 Monaural Headset
- Quick Disconnect (QD) to 3.5mm Jack Cable (4-pole)
- Ear Cushions (pre-installed or spare)



Image: The IPD IPH-160 headset with its detachable Quick Disconnect cable and 3.5mm jack connector.

## 3. SETUP

---

### 3.1 Connecting the Headset

1. Connect the Quick Disconnect (QD) cable to the headset. Ensure a secure connection.
2. Insert the 3.5mm jack of the cable into the corresponding port on your device (Android cell phone, laptop, tablet, Apple MacBook, or other smart device).

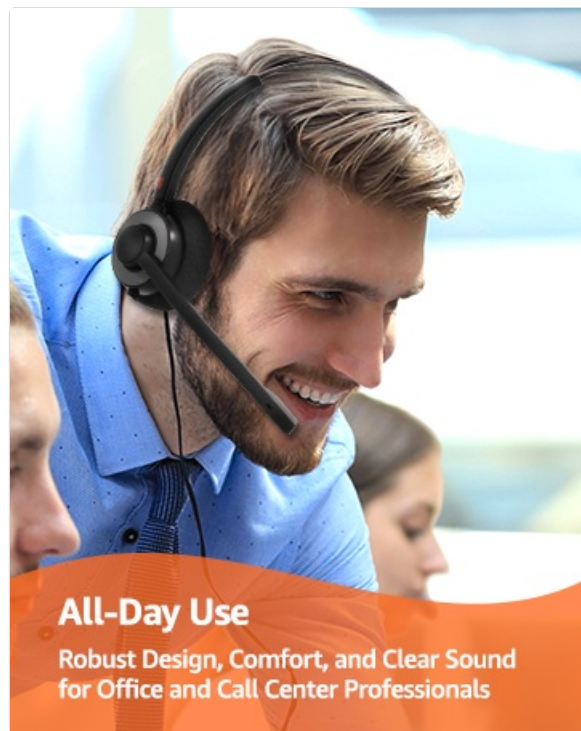


Image: A close-up view of the 3.5mm jack connector, illustrating its connection to a mobile device and laptop.

## 3.2 Device Compatibility

The 3.5mm jack (4 poles) is compatible with a wide range of devices including:

- Android cell phones (e.g., Samsung, Huawei, HTC, ZTE)
- Laptops
- Tablets
- Apple MacBooks with a single 3.5mm headset port

### Note:

- iPhone 7/7S and later models may require an additional Lightning to 3.5mm adapter (not included).
- If your specific phone model is not listed or you encounter compatibility issues, please contact IPD support for assistance.

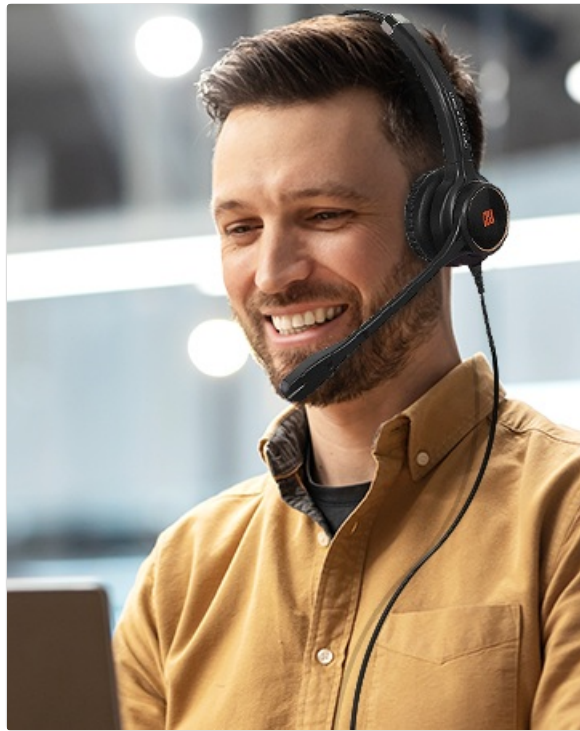


Image: The IPD headset shown with various connection options for desk phones, PCs/softphones, and mobile phones, highlighting the versatility of Quick Disconnect cables.

## 4. OPERATING THE HEADSET

---

### 4.1 Wearing and Adjusting

The IPH-160 headset is designed for all-day comfort. Adjust the headband for a secure yet comfortable fit. The microphone boom is flexible; position it approximately 1-2 inches from your mouth for optimal voice pickup.

### 4.2 Noise Cancelling Microphone

The headset features a passive noise-cancelling microphone to reduce background noise, ensuring clearer conversations. Proper microphone positioning is crucial for effective noise cancellation.

# HD Sound with Noise Cancelling Microphone

For a Clear Communication

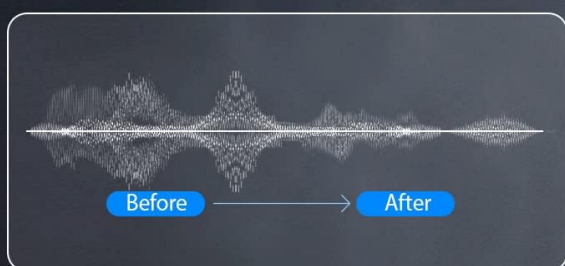


Image: A user wearing the headset, demonstrating the microphone's position and illustrating the effect of noise cancellation on audio waveforms.

## 4.3 Acoustic Shock Protection (ASP)

The headset incorporates an Acoustic Shock Protection (ASP) circuit on the speaker. This feature protects your hearing from sudden, unwanted loud noises by cutting sounds over 105dB and maintaining levels below 105dB.

## 4.4 Wideband Audio

The HD Wideband speaker delivers clear sound, enhancing the quality of your calls and audio monitoring.

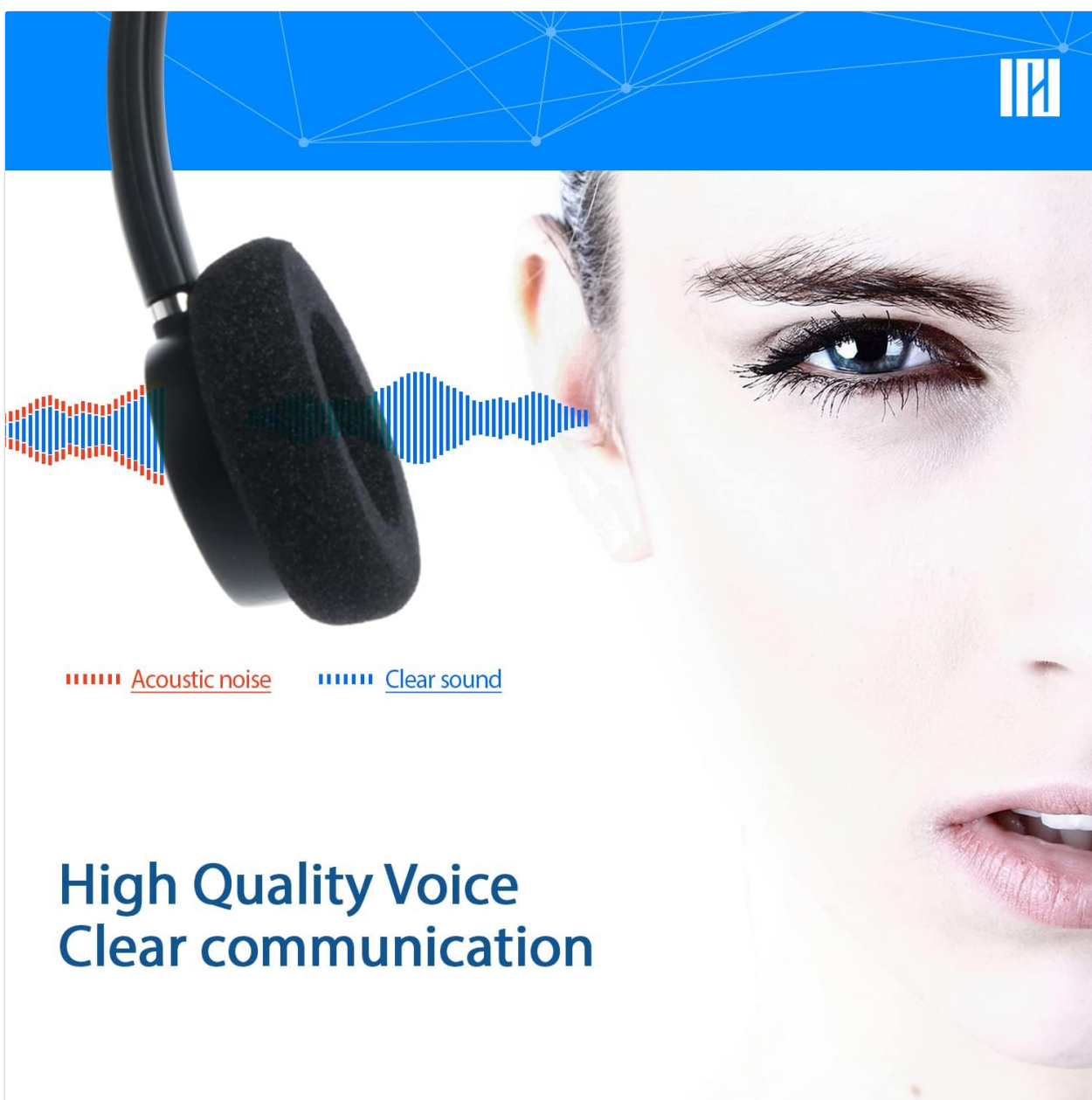


Image: A close-up of the headset's ear cushion, visually representing the distinction between acoustic noise and clear sound for high-quality voice communication.

## 5. MAINTENANCE

---

### 5.1 Cleaning

To maintain hygiene and performance, regularly clean the ear cushions and other surfaces of the headset with a soft, dry cloth. Avoid using harsh chemicals or abrasive materials.

### 5.2 Storage

When not in use, store the headset in a clean, dry place away from direct sunlight and extreme temperatures. Avoid tangling the cable to prevent damage.

## 6. TROUBLESHOOTING

---

### 6.1 No Sound or Low Volume

- Ensure the 3.5mm jack is fully inserted into your device.

- Check your device's volume settings.
- Verify that the headset is selected as the audio output device in your computer's sound settings.
- Confirm the Quick Disconnect (QD) cable is securely connected to the headset.

### 6.2 Microphone Not Working

- Ensure the microphone boom is positioned correctly near your mouth.
- Check your device's microphone input settings and ensure the headset is selected as the input device.
- Test the headset with another compatible device to rule out a device-specific issue.

### 6.3 Compatibility Issues

If you experience compatibility problems with your device, especially if it's not explicitly listed as compatible, please contact IPD customer support for guidance.

## 7. SPECIFICATIONS

Feature	Specification
Model Name	IPH-160-35
Connectivity Technology	Wired
Headphones Jack	3.5 mm Jack (4-pole)
Noise Control	Passive Noise Cancellation
Frequency Response	10 KHz
Sensitivity	58 dB
Impedance	150 Ohms
Item Weight	198 Grams (7 ounces)
Material	Plastic
Ear Placement	Over Ear
Special Feature	Noise Cancellation
Included Components	Ear Cushions

## 8. WARRANTY INFORMATION

The IPD IPH-160 Headset comes with a **3-year warranty** from the date of purchase. This warranty covers manufacturing defects under normal use. Please retain your proof of purchase for warranty claims.

## 9. SUPPORT

For technical assistance, warranty claims, or any questions regarding your IPD IPH-160 Headset, please contact IPD customer support. You can find contact information on the official IPD website or through your retailer.

Visit the [IPD Store](#) for more information and products.

