

MEIZE K105

MEIZE 10-inch Android Tablet K105 User Manual

Model: K105

1. PRODUCT OVERVIEW

The MEIZE 10-inch Android Tablet K105 is a versatile device designed for both productivity and entertainment. Featuring a 10.1-inch HD display, a quad-core processor, and the Android 9.0 Pie operating system, it offers a smooth user experience. This tablet supports dual SIM cards for cellular connectivity and includes a 6000mAh battery for extended usage.



Image: Front view of the MEIZE 10-inch Android Tablet K105, displaying its home screen with various application icons.

2. WHAT'S IN THE BOX

Upon unboxing your MEIZE K105 tablet, please verify that all the following items are included:

- MEIZE 10-inch Android Tablet K105
- AC Adapter
- USB Cable
- User Manual (this document)

HD

1280*800
High Resolution

10.1"

G+G
Touch Screen

IPS

178 Degree
Viewing Angle

Capture every moment in your life

• Front Camera: 2.0 MP

• Rear Camera: 5.0 MP



Image: The MEIZE tablet alongside its included accessories, such as the charging cable and power adapter.

3. PRODUCT LAYOUT AND COMPONENTS

Familiarize yourself with the physical layout of your tablet:

- **Power Button:** Located on the side, used to turn the tablet on/off or wake/sleep the screen.

- **Volume Buttons:** Adjust the audio output level.
- **USB Port:** For charging and data transfer.
- **Headphone Jack:** For connecting wired headphones.
- **Front Camera:** For video calls and selfies (2.0 MP).
- **Rear Camera:** For taking photos and videos (5.0 MP).
- **Speaker:** Audio output.
- **SIM/SD Card Slot:** Houses the dual SIM card slots and the microSD card slot for expandable storage.



Image: Close-up view of the MEIZE tablet's side, showing the open cover for the SD card and dual SIM card slots.

| | | | | | | | |
|---|-------------------|---|---------------------------------------|---|---------------------------|---|-----------------------|
|  | 10.1 Inch Display |  | 1280*800 Resolution |  | 2GB RAM 32GB ROM |  | Android 9.0 Quad-core |
|  | Bluetooth 4.0 |  | 3G Phone Tablets IEEE 802.11 b/g/n |  | Front 2.0MP Rear 5.0MP |  | 6000mAh Battery |

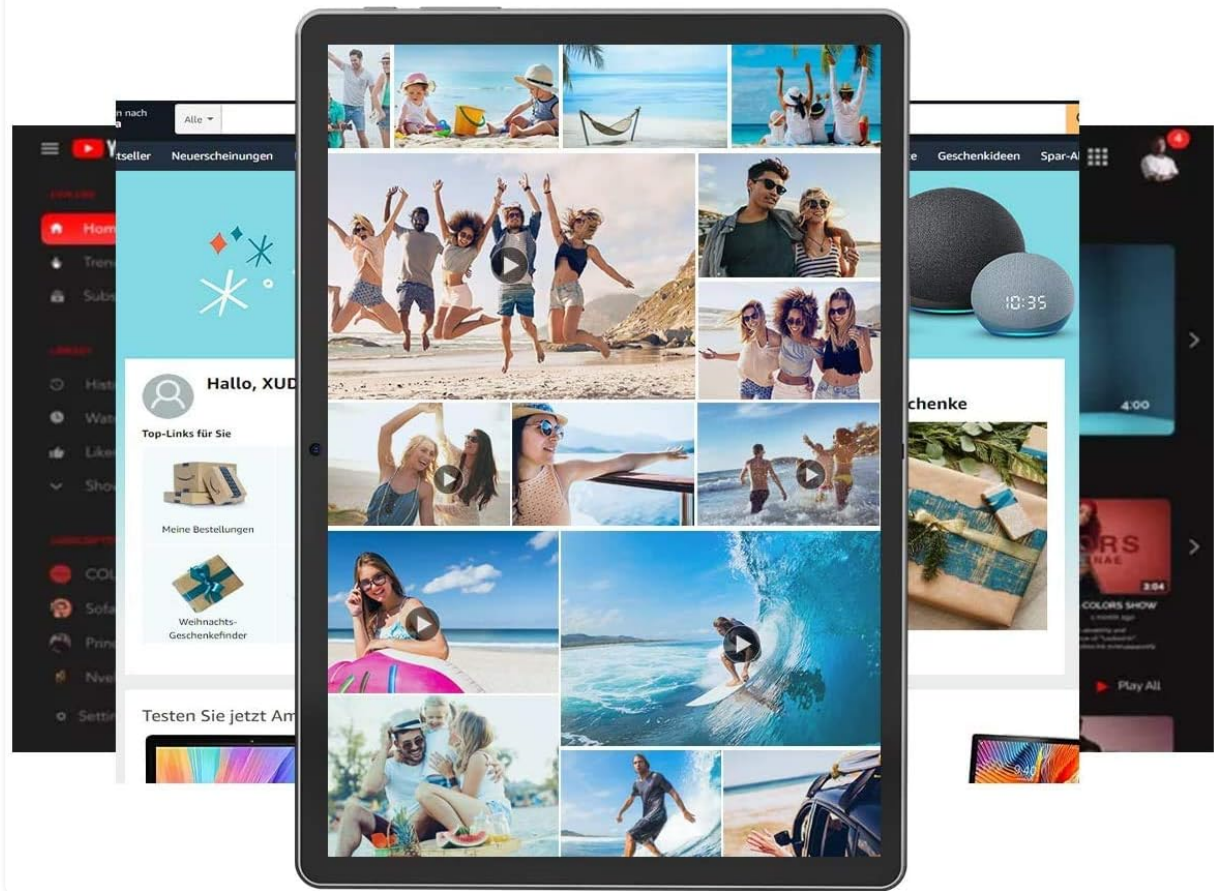


Image: Diagram highlighting the locations of the 2.0 MP front camera and 5.0 MP rear camera on the MEIZE tablet.

4. SETUP

4.1 Charging the Tablet

Before first use, fully charge your tablet. Connect the USB cable to the tablet's USB port and the AC adapter, then plug the adapter into a power outlet. The battery indicator on the screen will show charging status.

4.2 Powering On/Off

- **To Power On:** Press and hold the Power button until the MEIZE logo appears.
- **To Power Off:** Press and hold the Power button until the power options menu appears, then select "Power off."
- **To Sleep/Wake:** Briefly press the Power button.

4.3 Initial Setup Wizard

The first time you power on the tablet, you will be guided through an initial setup process. Follow the on-screen prompts to select your language, connect to Wi-Fi, set up your Google account, and configure other basic settings.

4.4 Inserting SIM Cards and SD Card

The MEIZE K105 supports dual SIM cards and expandable storage via a microSD card.

1. Locate the SIM/SD card slot cover on the side of the tablet.
2. Carefully open the cover.
3. Insert your SIM cards into the designated SIM1 and SIM2 slots with the gold contacts facing down.
4. Insert your microSD card (up to 128GB, not included) into the SD card slot until it clicks into place.
5. Close the slot cover securely.



Image: Detailed diagram showing how to correctly insert SIM cards (SIM1, SIM2) and an SD card into their respective slots on the MEIZE tablet.

5. OPERATING THE TABLET

5.1 Home Screen Navigation

The home screen is your central hub. Swipe left or right to access different panels. Tap on app icons to open applications. Swipe down from the top of the screen to access the notification panel and quick settings.

Android Quad Core

GMS certified Google



Image: The MEIZE tablet displaying its home screen filled with various application icons, demonstrating the user interface.

5.2 Connecting to Wi-Fi

1. Go to **Settings > Network & internet > Wi-Fi**.
2. Toggle Wi-Fi on.
3. Select your desired Wi-Fi network from the list.
4. Enter the password if prompted, then tap **Connect**.

5.3 Bluetooth Pairing

1. Go to **Settings > Connected devices > Bluetooth**.
2. Toggle Bluetooth on.
3. Ensure the device you wish to pair is in pairing mode.
4. Select the device from the list of available devices and follow any on-screen prompts to complete pairing.

5.4 Making Calls and Using Cellular Data

With inserted SIM cards, your tablet can function as a large phone. Use the pre-installed Phone app to make calls and the Messages app for SMS. Ensure mobile data is enabled in **Settings > Network & internet > Mobile network** to use cellular data.

5.5 Camera Usage

Open the Camera app from your home screen or app drawer. You can switch between front and rear cameras, select photo or video mode, and adjust basic settings like flash or timer.

5.6 Managing Storage

Your tablet comes with 32GB of internal storage. You can expand this by inserting a microSD card (up to 128GB). To view storage usage, go to **Settings > Storage**.

5.7 Installing and Uninstalling Apps

- **Install:** Open the Google Play Store app, search for your desired app, and tap **Install**.
- **Uninstall:** Go to **Settings > Apps & notifications**, select the app, and tap **Uninstall**. Alternatively, long-press the app icon on the home screen or app drawer and drag it to "Uninstall."

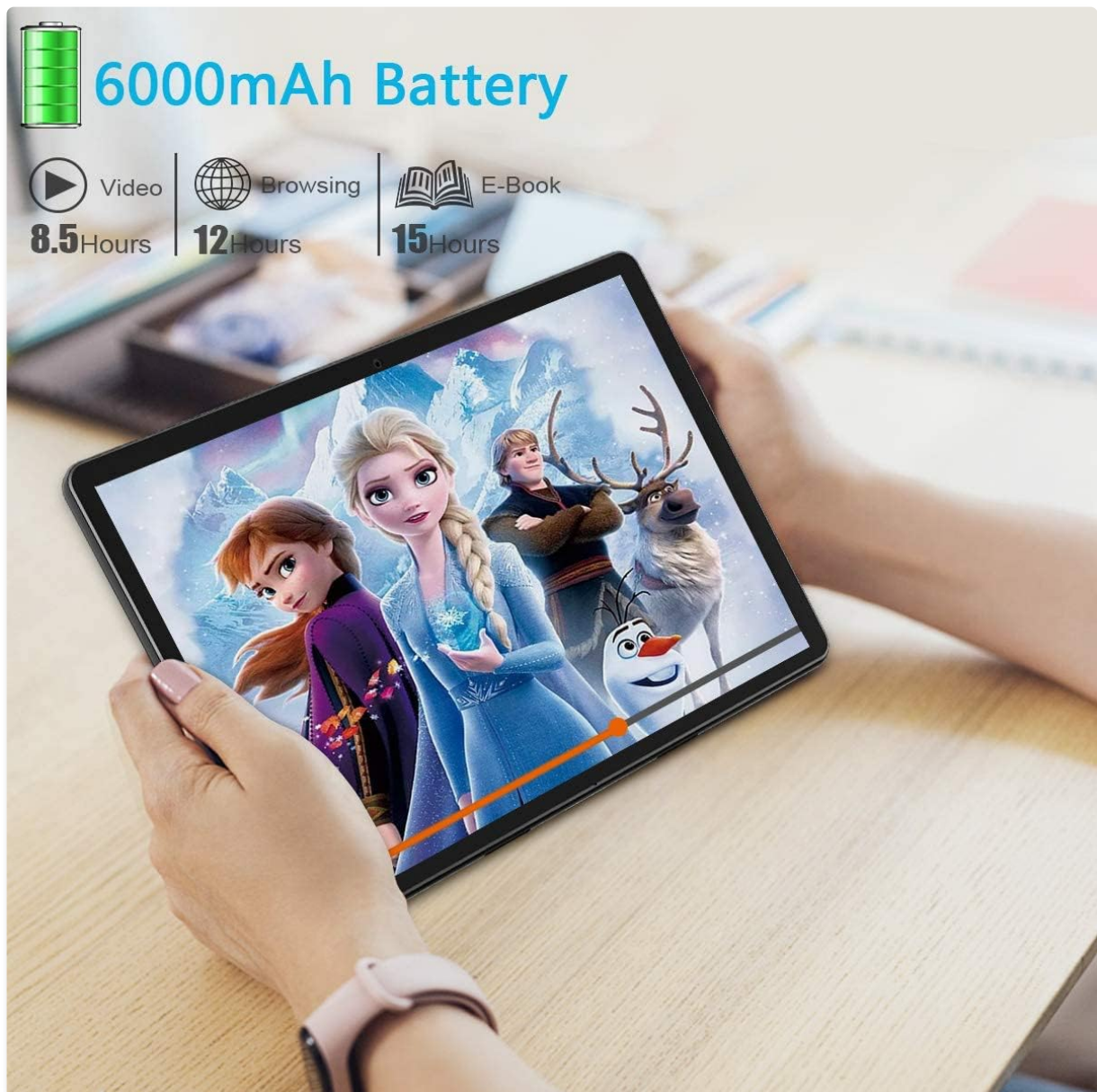


Image: A person holding the MEIZE tablet, watching a video, demonstrating its use for entertainment.

6. MAINTENANCE

6.1 Cleaning

Use a soft, lint-free cloth to clean the screen and body of the tablet. Avoid using harsh chemicals or abrasive materials that could damage the surface.

6.2 Battery Care

To prolong battery life, avoid exposing the tablet to extreme temperatures. It is recommended to keep the battery charge between 20% and 80% for optimal longevity. Avoid completely draining the battery frequently.



Image: Graphic illustrating the 6000mAh battery capacity of the MEIZE tablet, highlighting its endurance for video, browsing, and e-book reading.

6.3 Software Updates

Periodically check for system updates to ensure your tablet has the latest features and security patches. Go to **Settings > System > Advanced > System update**.

6.4 Backup Data

Regularly back up important data to a cloud service or external storage device to prevent data loss.

7. TROUBLESHOOTING

If you encounter issues with your tablet, try the following solutions:

- **Tablet won't turn on:** Ensure the tablet is charged. Connect it to the charger for at least 30 minutes before attempting to power on again.
- **Tablet is slow or unresponsive:** Close unused applications. Restart the tablet. Clear cache data from apps in **Settings > Apps & notifications**.
- **Wi-Fi connection issues:** Ensure Wi-Fi is enabled. Restart your Wi-Fi router. Forget the network in tablet settings and reconnect.

- **Apps crashing:** Ensure the app is updated to the latest version. Clear the app's cache and data in **Settings > Apps & notifications**. Reinstall the app if necessary.
- **Factory Reset (Last Resort):** If problems persist, you may need to perform a factory reset. **Warning: This will erase all data on your tablet.** Go to **Settings > System > Advanced > Reset options > Erase all data (factory reset)**.

For issues not resolved by these steps, please contact customer support.

8. SPECIFICATIONS

Key technical specifications for the MEIZE 10-inch Android Tablet K105:

| Feature | Specification |
|-----------------------|-----------------------------------|
| Display Size | 10.1 Inches |
| Screen Resolution | 1280 x 800 (HD) |
| Operating System | Android 9 Pie |
| Processor | 1.3 GHz Quad-Core |
| RAM | 2GB |
| Internal Storage | 32GB |
| Expandable Storage | Up to 128GB (microSD) |
| Rear Camera | 5 MP |
| Front Camera | 2 MP |
| Battery Capacity | 6000 mAh |
| Wireless Connectivity | Wi-Fi (802.11bgn), Bluetooth, GPS |
| Cellular Support | Dual SIM (2G/3G) |
| Item Weight | 1.85 pounds |
| Product Dimensions | 9.84 x 6 x 0.5 inches |



Image: A visual summary of the MEIZE tablet's technical specifications, including processor, memory, camera, and battery details.

9. WARRANTY AND SUPPORT





MEIZE provides a 1-year return and exchange service for this product. If you have any questions or require assistance, please contact our customer service team. We are available to assist you 24 hours a day.

For customer service inquiries, please refer to the contact information provided with your purchase or visit the official MEIZE support website.

© 2023 MEIZE. All rights reserved.

Related Documents - K105

| | |
|--|--|
| <div><div>VOPOTEK</div><div>User Manual</div><div>Bluetooth Keyboard Case</div><div>EN</div><div>105210913 V01</div></div> | <div>VOPOTEK Bluetooth Keyboard Case User Manual - Setup, Features, and Specifications</div> <div>Comprehensive user manual for the VOPOTEK Bluetooth Keyboard Case (Models K105, K104). Learn how to pair, use function keys, adjust backlight, check battery, and find specifications. Includes regulatory compliance information.</div> |
|--|--|

| | |
|---|--|
|  | <p>Sevylor Caravelle KK55/KK65/K85/K105 Inflatable Boat Owner's Manual</p> <p>Comprehensive owner's manual for Sevylor Caravelle inflatable boats (models KK55, KK65, K85, K105), covering setup, usage, maintenance, and repair. Includes technical specifications, safety warnings, and usage guidelines for calm waters.</p> |
|  | <p>K105 Metal Two-Key Remote Control User Manual</p> <p>User manual for the K105 metal two-key remote control by Shenzhen Keshilian Electronic Technology Co., Ltd. Details product parameters, technical specifications, scope of application, operating instructions, and FCC compliance information.</p> |
|  | <p>R&S FSVA and R&S FSV Signal and Spectrum Analyzer Firmware Release Notes V3.60</p> <p>This document provides release notes for firmware version V3.60 of the R&S FSVA and R&S FSV Signal and Spectrum Analyzers. It details new functions, modifications, improvements, and known issues for various firmware versions.</p> |
|  | <p>R&S®FPS-K10x LTE Downlink Measurement Application User Manual</p> <p>User manual for the Rohde & Schwarz R&S®FPS-K10x LTE Downlink Measurement Application, detailing its features, measurements, configuration, and operation for LTE signal analysis.</p> |
|  | <p>ENHET Kitchen System by IKEA - Design, Flexibility, and Storage Solutions</p> <p>Discover the IKEA ENHET kitchen system, offering customizable modular kitchens with smart storage, various finishes, and easy assembly. Plan your dream kitchen with IKEA's flexible ENHET range.</p> |