

BLACKSTONE 5249

BLACKSTONE 5249 Propane to Natural Gas Conversion Kit User Manual

Model: 5249

1. INTRODUCTION

This manual provides comprehensive instructions for the installation and safe operation of your BLACKSTONE 5249 Propane to Natural Gas Conversion Kit. This kit is designed to convert compatible Blackstone propane griddles to operate on a natural gas supply, offering a continuous fuel source for your outdoor cooking equipment. Please read all instructions carefully before beginning the conversion process to ensure proper installation and safe use.

2. SAFETY INFORMATION

Your safety and the safety of others are paramount. Always follow these basic safety precautions when installing or operating this conversion kit.

- **Professional Installation Recommended:** Gas installations should ideally be performed by a qualified professional to ensure compliance with local codes and safety standards.
- **Gas Leak Detection:** Always perform a leak test after installation using a soap and water solution. Never use an open flame to check for gas leaks.
- **Ventilation:** Ensure adequate ventilation when working with gas appliances.
- **Proposition 65 Warning:** This product can expose you to chemicals including carbon monoxide, which is known to the State of California to cause birth defects or other reproductive harm. For more information go to www.P65Warnings.ca.gov.
- **Disconnect Power:** Before any installation or maintenance, ensure the griddle is completely off and disconnected from any fuel source.
- **Read Griddle Manual:** Refer to your griddle's original instruction manual for additional safety guidelines specific to your appliance.

3. PACKAGE CONTENTS

Verify that all components listed below are present in your conversion kit package:

- 10 ft. (3/8") Natural Gas Hose
- 3/8" Quick Connect Fitting
- Natural Gas Orifices (various sizes for compatibility)
- 2 Thread Check Gauges
- 7mm Orifice Wrench

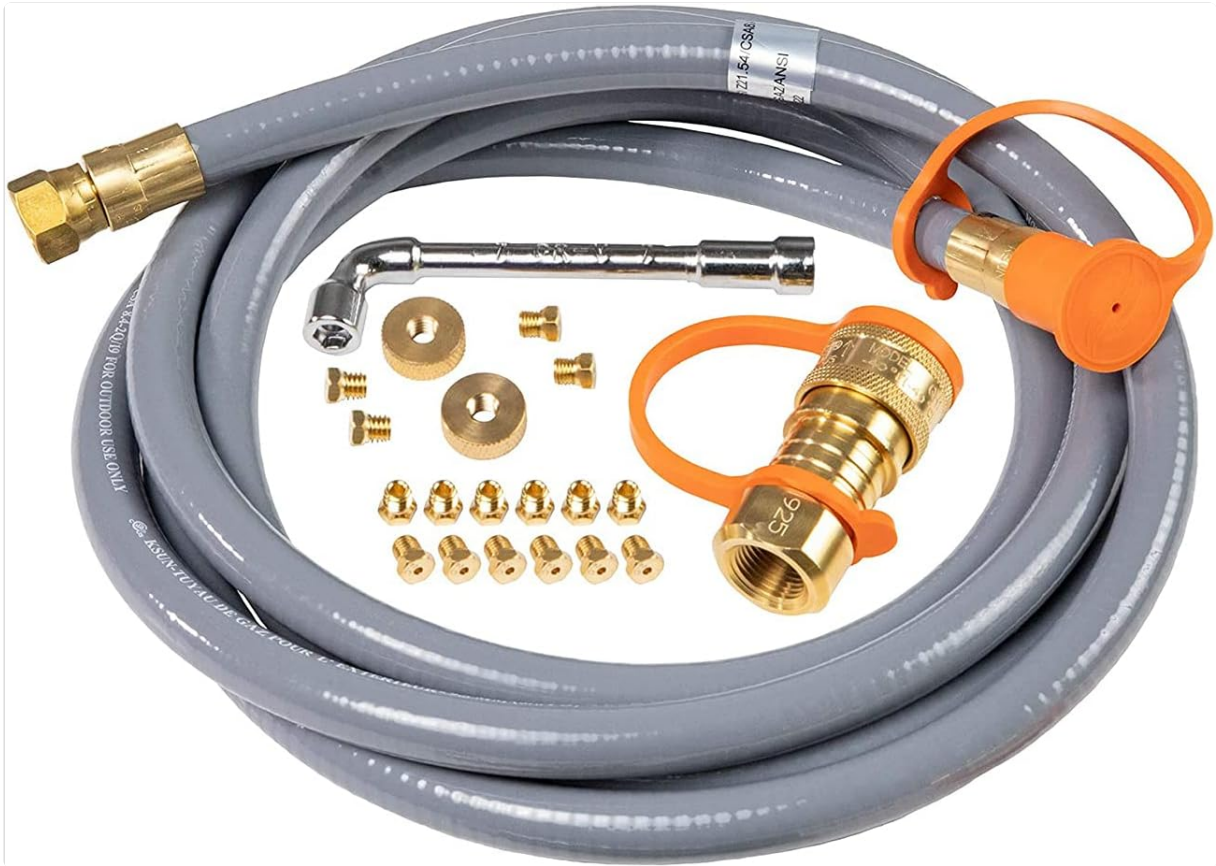


Image 3.1: All components included in the Blackstone 5249 Propane to Natural Gas Conversion Kit. This includes the natural gas hose, quick connect fitting, various orifices, thread check gauges, and an orifice wrench.

4. COMPATIBILITY

This conversion kit is designed for specific Blackstone griddle models. Please confirm your griddle's compatibility before proceeding with installation.

Compatible Griddles:

- Blackstone 28" Griddles
- Blackstone 36" Griddles
- Blackstone Tailgaters
- Blackstone Range Top Combos
- Blackstone Single Burner Rec Stoves

Non-Compatible Griddles:

This kit is **not optimized** for the following models:

- Blackstone 17" Griddles
- Blackstone 22" Griddles
- Griddles with Propane Air Fryers

- Pizza Ovens

5. SETUP INSTRUCTIONS

Follow these steps carefully to convert your griddle to natural gas. It is recommended to have a second person assist with leak testing.

5.1. Before You Begin

- Ensure your griddle is completely cool and all gas supply is turned off.
- Disconnect any existing propane tanks or gas lines.
- Gather necessary tools: adjustable wrench, pipe thread sealant (gas-rated), and a spray bottle with a soap and water solution for leak testing.

5.2. Orifice Replacement

The orifices control the gas flow to the burners. Propane and natural gas require different orifice sizes.



Image 5.1: Natural gas orifices, thread check gauges, and the 7mm orifice wrench included in the kit.

1. Locate the existing propane orifices on your griddle. These are typically found at the base of each burner tube. Refer to your griddle's manual for exact locations.
2. Using the 7mm orifice wrench provided, carefully unscrew and remove each propane orifice. Note that some orifices may be tight; apply steady pressure to avoid stripping.
3. Identify the correct natural gas orifices for your griddle model using the provided thread check gauges. The gauges will help match the thread size of the new orifices to your griddle's burner tubes.
4. Apply a small amount of gas-rated pipe thread sealant to the threads of each new natural gas orifice.
5. Carefully screw the new natural gas orifices into place using the 7mm orifice wrench. Tighten them securely, but do not overtighten, as brass fittings can be damaged.

5.3. Hose and Quick Connect Installation

This section details connecting the natural gas hose and quick connect fitting to your griddle and natural gas supply.



Image 5.2: The 3/8 inch quick connect fitting, designed for secure and easy connection to a natural gas line.

1. Locate the gas inlet on your griddle where the propane regulator was previously connected.
2. Attach the 3/8" quick connect fitting to the griddle's gas inlet. Apply pipe thread sealant to the threads and tighten with an adjustable wrench.
3. Connect the 10 ft. natural gas hose to the quick connect fitting on the griddle. Ensure it clicks securely into place.



Image 5.3: Demonstrates the process of connecting the quick connect fitting to the natural gas supply line.

4. Connect the other end of the 10 ft. natural gas hose to your home's natural gas supply line. This connection should also be sealed with pipe thread sealant and tightened securely.



Image 5.4: The natural gas hose properly connected to the griddle, ready for operation.

5. **Leak Test:** Turn on the natural gas supply slowly. Spray all connections with the soap and water solution. If bubbles appear, turn off the gas immediately, tighten the connection, and re-test. Repeat until no bubbles are observed.

6. OPERATING INSTRUCTIONS

Once the conversion is complete and leak-tested, your griddle is ready for use with natural gas.

1. Ensure the natural gas supply valve is fully open.
2. Follow your griddle's original operating instructions for lighting the burners. Natural gas may ignite slightly differently than propane due to different pressure and BTU values, but the general lighting procedure remains the same.
3. Adjust burner controls as needed for desired cooking temperature.
4. After cooking, turn off all griddle burners and close the natural gas supply valve.

7. MAINTENANCE

Regular maintenance ensures the longevity and safe operation of your conversion kit and griddle.

- **Hose Inspection:** Periodically inspect the natural gas hose for any signs of wear, cracks, kinks, or damage. Replace immediately if any damage is found.
- **Connection Checks:** Annually, or if you suspect a leak, perform a leak test on all gas connections using the soap and water solution.
- **Cleaning:** Keep the quick connect fittings clean and free of debris to ensure a proper seal.
- **Storage:** If storing the griddle for an extended period, disconnect it from the natural gas supply and cap the gas line.

8. TROUBLESHOOTING

If you encounter issues after converting to natural gas, refer to the following common troubleshooting steps.

- **No Gas Flow to Burners:**
 - Ensure the natural gas supply valve is fully open.
 - Check all quick connect fittings and hose connections for proper seating.
 - Verify that the correct natural gas orifices were installed.
- **Low Flame or Inconsistent Heat:**
 - Confirm the natural gas supply pressure is adequate.
 - Inspect orifices for any blockages or debris.
 - Ensure the griddle's burner tubes are clean and free of obstructions.
- **Gas Odor:**
 - Immediately turn off the natural gas supply.
 - Perform a thorough leak test on all connections.
 - If the odor persists or the source cannot be found, evacuate the area and contact your gas provider or a qualified professional.

If troubleshooting steps do not resolve the issue, contact BLACKSTONE customer support or a certified gas technician.

9. SPECIFICATIONS

Brand	BLACKSTONE
-------	------------



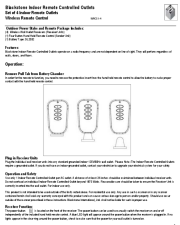
Model Number	5249
Material	Brass
Hose Length	10 ft. (120 inches)
Hose Diameter	3/8 inch
Item Weight	2.8 Pounds
UPC	717604052495
Included Components	10 ft. (3/8") natural gas hose, 3/8" quick connect fitting, natural gas orifices, 2 thread check gauges, 7mm orifice wrench

10. SUPPORT

For further assistance, technical support, or warranty inquiries, please refer to the official BLACKSTONE website or contact their customer service department. Keep your purchase receipt and model number (5249) available when contacting support.

Related Documents - 5249

 <p>BLACKSTONE MODEL 6301</p> <p>3 BURNER GRIDDLE NATURAL GAS READY DROP-IN WITH HOOD</p>	<p>Blackstone 6301 3-Burner Griddle Owner's Manual</p> <p>This owner's manual provides comprehensive instructions for the Blackstone 6301 3-Burner Griddle, covering assembly, safe operation, maintenance, and troubleshooting for this natural gas ready drop-in griddle with hood.</p>
 <p>BLACKSTONE 22" TABLETOP GRIDDLE Owner's Manual MODEL 1665</p>	<p>Blackstone 22" Tabletop Griddle Owner's Manual (Model 1665) - Assembly, Use, and Care</p> <p>Comprehensive owner's manual for the Blackstone 22" Tabletop Griddle, Model 1665. It covers safety precautions, assembly, operation, maintenance, troubleshooting, and griddle seasoning to ensure safe and optimal use.</p>
 <p>BLACKSTONE 36" GRIDDLE AIRFRYER COMBO</p>	<p>Blackstone 36" Griddle Air Fryer Combo Owner's Manual & Assembly Guide</p> <p>Comprehensive owner's manual and assembly guide for the Blackstone 36" Griddle Air Fryer Combo (Models 1923, 2254), covering safety, setup, operation, maintenance, and troubleshooting.</p>

	<p>Blackstone 28" Griddle Model 2199 Owner's Manual and Assembly Guide</p> <p>Comprehensive owner's manual and assembly guide for the Blackstone 28-inch Griddle, Model 2199. Includes safety instructions, warranty information, assembly steps, usage guidelines, cleaning, and troubleshooting.</p>
	<p>Blackstone 28" Griddle with Hood & Accessory Rail System Owner's Manual</p> <p>Comprehensive owner's manual for the Blackstone 28" Griddle with Hood & Accessory Rail System (Model: 2367), covering safety information, assembly, operation, maintenance, and troubleshooting.</p>
	<p>Blackstone Indoor Remote Controlled Outlets WRCS1-4 User Manual and Features</p> <p>Comprehensive guide to Blackstone's WRCS1-4 Indoor Remote Controlled Outlets, covering package contents, features, operation, safety guidelines, battery replacement, and warranty information.</p>

Documents - BLACKSTONE – 5249



[\[pdf\]](#) Installation Guide Instructions Parts List Specifications

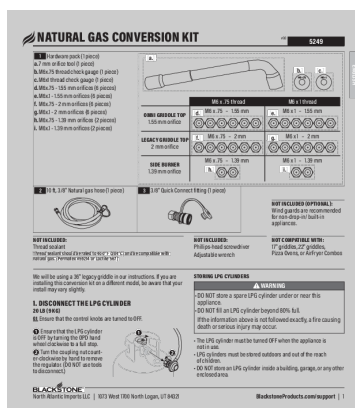
5202 5249 NATURAL GAS CONVERSION KIT 5 2500 44 oducts ILLUSTRATED PARTS LIST

COMPATIBLE WITH THESE BLACKSTONE PRODUCTS 1 10 ft 3 8 Natural Gas Hose pc

NGConversion Instructions v6 8112 cdn shocho co sc specsheets |||

5202 **5249** NATURAL GAS CONVERSION KIT This kit is designed to be used with natural gas at 7 inches of water column. Verify your natural gas pressure with your local gas company, and with your regulator manufacturer before installing this product. If you do need an additional regulator, hire a profes...

lang:en **score:32** filesize: 3.8 M page_count: 16 document date: 2021-07-12



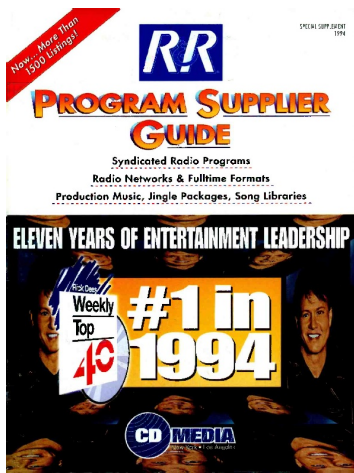
[\[pdf\]](#) Instructions

Click Here For Large Unit Natural Conversion Kit Blackstone Gas Orange Connection 5249 — Eternal

Ember NG Instructions V8 v 1712860496 cdn shopify s files 1 0312 7695 7740 |||

ENGLISH NATURAL GAS CONVERSION KIT 1 Hardware pack 1 piece a.7 mm orifice tool 1 piece b.M6x.7 ... DLE TOP f. M6 x .75 2 mm 2 mm orifice SIDE BURNER 1.39 mm orifice M6 x .75 1.39 mm h. v08 **5249** b. c. M6 x 1 thread e. M6 x 1 1.55 mm g. M6 x 1 2 mm M6 x 1 1.39 mm i. 2 10 ft,...

lang:en **score:32** filesize: 2.79 M page_count: 12 document date: 2023-09-06



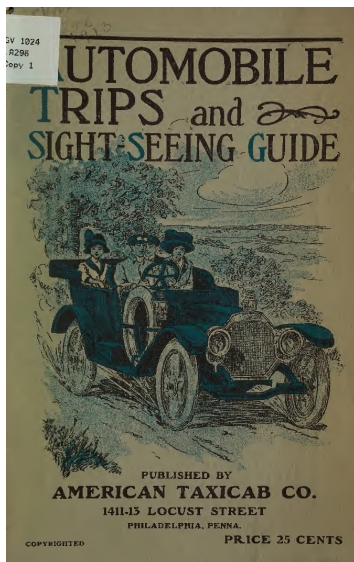
[\[pdf\]](#) Guide

RRR Program Supplier Guide 94 worldradiohistory Archive Ratings Directories RandR Guides ||| SPECIAL SUPPLEMENT 1994 Syndicated Radio Programs Radio Networks Fulltime Formats Production Music ... PROGRAM SUPPLIER GUIDE 94.13 COMEDY R Bob Rivers Twisted Radio Twisted Radio Phone: 206 888 -**5249** Frequency: Monthly Terms: Barter, Cash Delivered via: Analog tape, DAT The best song parodies y... lang:en **score:21** filesize: 14.68 M page_count: 172 document date: 2014-11-28



[\[pdf\]](#) User Manual Instructions

Printers Become More Intelligent World Radio History on line manual at the touch of a instructions prompt needs 43K Vsafe anti virus 7 45K Smartdry disk cache Byte 1993 12 worldradiohistory Archive 90s ||| 90 vits -r asse. sv5 -renns -res -reEb DECEMBER 1993 What s the best Windows spreadsheet PAGE 138 D ... 450DE/3, 466DE Hewlett-Packard Vacua 05/165; 20PC, 45/20; 20C; 25, 25C 4MB Kil 01542 or 36420 . **5249** efeb. 7M8 310 7466 5119 8811 3102468 5429 Vert., 386/16N, 386/2094, 306/2594 PC ss:.... lang:en **score:19** filesize: 27.35 M page_count: 322 document date: 2021-10-07



[\[pdf\]](#) Guide

Automobile trips and sight seeing guide archive org automobiletripss00unse File IA Wikimedia Commons ||| .UTOMOBILE I RIPS and SKHPSEEING GUIDE PUBLISHED BY AMERICAN TAXICAB CO. 1411-13 LOCUST STREET CO ... r 1892. Germantown Dispensary and Hospital, Penn near Chew. Germantown 1936 Germantown Veterinary, **5249** Germantown Ave. Germantown 1524. Gynecean, 247 N. Eighteenth. Spruce 3272-D. Hahnemann Med. Co... lang:en **score:17** filesize: 11.79 M page_count: 102 document date: 2020-02-14



[Society of Broadcast Engineers 2009-10 Membership Directory & Buyers' Guide](#)

This document is a comprehensive directory and buyer's guide for the Society of Broadcast Engineers (SBE) for 2009-2010. It includes a membership listing, information on SBE's history, governance, services, and a buyer's guide for broadcast engineering equipment and services. It also features the Kathrein MSK-200 Digital Television Signal Analyzer.

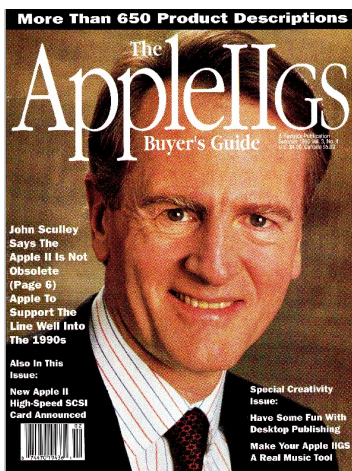
lang:en score:17 filesize: 8.89 M page_count: 140 document date: 2022-05-25



[\[pdf\] Guide Catalog](#)

12th Annual Guide to Music Attorneys Music Connection 1998 07 20 worldradiohistory Archive All 90 ||| 12th Annual Guide to Music Attorneys Vol. XXII, No. 15 7/20/98 to 8/2/98 U.S. \$2.95 Canada \$3.95 ... eld for melodic, contemporary, smart pop professionals. I have many songs in studio. Jennie 310.838-5249. -Tyler, Johanson. Band has indie deal. Ickout in Reseda 626-856.1506. Woe wanted for musicly ...

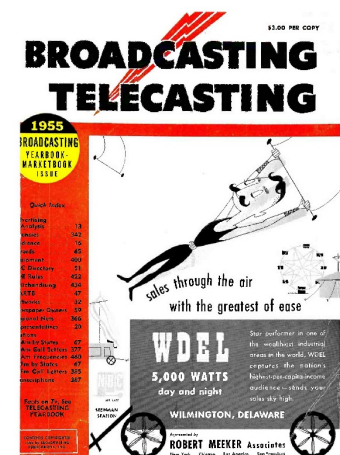
lang:en score:16 filesize: 6.71 M page_count: 64 document date: 2023-09-18



[\[pdf\] Documentation Guide](#)

The Apple IIgs Buyer's Guide Summer 1990 Downloaded from Apple2Online IIgs mirrors apple2.org za ftp.apple.asimov.net documentation magazines misc sfazam.f Now you can amaze your friends Dazzle your boss Create captivating Apple II graphics How ... the AppleTalk Network System Apple IIgs; other Apple II models; 128K; ProDOS 8; not copyprotected. 5249 retail; AppleWorks 3.0 1,414 retail; AppleWorks 10-pack 1,616 retail; AppleWorks/Network ...

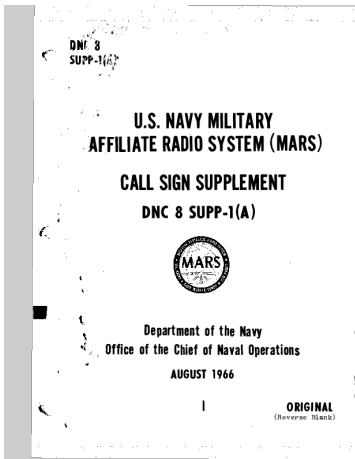
lang:en score:14 filesize: 164.69 M page_count: 70 document date: 2012-03-26



[\[pdf\] Guide](#)

BROADCASTING Oct 13 2023 — Palo Alto KSCO Santa Cruz KISS Bishop KRUH quick analysis Write telephone or mail coupon guide to the determination of good broadcast advertising 1955 BC YB worldradiohistory Archive ||| 3.00 PER COPY BROADCASTING TELECASTING 1 BROADCASTING YEARBOOK MARKETBOOK ISSUE Quick Index Ivert ... RTLAND Multnomah Co. KBPS 1450 1923 250 BROADCASTING Clackamas Bcstrs., Inc. P. O. Box 391 5249 Evergreen 1-5475 Portland Meeker Western Radio Corp. P. O. Box 178 1425 ABC Portland Publ...

lang:en score:12 filesize: 23.94 M page_count: 482 document date: 2013-08-09



[U.S. Navy Military Affiliate Radio System \(MARS\) Call Sign Supplement DNC 8 SUPP-1\(A\)](#)

This document is the U.S. Navy Military Affiliate Radio System (MARS) Call Sign Supplement, DNC 8 SUPP-1(A), published in August 1966 by the Department of the Navy. It serves as a directory of assigned call signs, member names, and addresses, essential for MARS operations and communication.

lang:en score:12 filesize: 24.19 M page_count: 700 document date: 2016-04-26



[\[pdf\] Guide](#)

Layout 1 amy norton Fintech 2019 Association of Corporate Counsel Gilbert Tobin Gleiss Lutz Goldfarb Seligman Co Gorriceta Africa Cauton Saavedra Gorrisen Federspiel GVZH Advocates FIN19 e Edition acc sites default files resources upload ICLG The International Comparative Legal Guide to A practical cross border insight into fintech law Published by Global Group with contributions from ICLG The International Comparative Legal Guide to: Fintech 2019 3rd Edition A practical cross-borde ... vd. Manuel vila Camacho #24 7 Piso, Col. Lomas de Chapultepec, 11000 Mexico City Mexico Tel: 52 55 **5249** 2019 Email: aportilla.galicia.com.mx URL: www.galicia.com.mx Arturo Portilla s professional pra...

lang:en score:11 filesize: 4.3 M page_count: 342 document date: 2019-05-10



[\[pdf\] User Manual Dimension Guide](#)

AUG 13 TO 25 2024 12 août — Powerful 389cc Honda OHV engine and triplex plunger pump CSA certified Manual crank override Sturdy removable 5 7 8 in foot plate 8690059 Ev 17 305517 Aug to National EN Digital srsLtd AfmBOor2MMChVG9KwQ682hS2G80gn5B7Hiv AY2HdPDK41slyWN rMFx princessauto file general ||| Ev 17 305517 NAT._ENG 2 WEEK SALE STARTS TUESDAY AUG 13 TO 25, 2024 START SAVE 152 17777 SOMET ... 16-Gauge Sliding Door Reg. 59.99 4499 E C 8979353 1 2 ft 16-Gauge Sliding Door Reg. 69.99 **5249** D 8979429 2 pk Adjustable Strap Trolleys Reg. 79.99 5999 E 8979411 2 pk 9 in. 4-Way...

lang:en score:9 filesize: 60.37 M page_count: 76 document date: 2024-07-17