

[Manuals.plus](#) /

> [onlyfire](#) /

> onlyfire Stainless Steel Rotisserie Kit F-BRK6057-SS1 Instruction Manual

onlyfire F-BRK6057-SS1

onlyfire Stainless Steel Rotisserie Kit

Model: F-BRK6057-SS1

INTRODUCTION

This manual provides instructions for the safe and efficient use of your onlyfire Stainless Steel Rotisserie Kit. Please read all instructions carefully before assembly and operation. Retain this manual for future reference.

SAFETY INFORMATION

- Always ensure the rotisserie motor is unplugged before assembly, disassembly, or cleaning.
- Do not immerse the motor in water or expose it to excessive moisture.
- Keep children and pets away from the grill and rotisserie during operation.
- Use heat-resistant gloves when handling hot components.
- Ensure the spit rod is securely balanced and locked before starting the motor.
- Do not overload the rotisserie. The motor is designed to hold up to 40 lbs of food.
- Ensure proper ventilation when using the rotisserie on a grill.

PACKAGE CONTENTS

Verify that all components are present before beginning assembly:

- 1x 28-inch Hexagon Spit Rod
- 1x 110V Electric Rotisserie Motor (6 Watt)
- 1x Motor Bracket
- Spit Rod Support Brackets (A, B, C)

- 2x Meat Forks
- 1x Rotisserie Handle
- Other necessary installation accessories (screws, nuts, etc.)



Figure 1: All components included in the onlyfire Stainless Steel Rotisserie Kit.

SETUP AND INSTALLATION

The onlyfire Rotisserie Kit offers multiple installation methods to accommodate various gas grills. Please identify the method suitable for your grill.

Installation Method A: For Grills with Vertical Motor Installation Holes

This method is suitable for grills that have existing vertical holes for motor installation and a cooking box size up to 23 inches. Please measure your grill's cooking box size and check for vertical installation holes before proceeding.

1. Attach the motor bracket to the side of your grill using the existing vertical installation holes. Secure it firmly with the provided hardware.

2. Insert the hexagon spit rod into the motor's drive socket on one side and rest the other end in the slot at the opposite side of your grill.
3. Use spit rod support C to help lock the spit rod in place, preventing it from sliding.



Figure 2: Installation Method A, showing the motor bracket attached to a grill with vertical holes.

Installation Method B: For Most Gas Grills (Excluding Weber)

This method is suitable for most gas grills on the market, including those with vertical or horizontal bracket holes. This method is **not** suitable for Weber grills.

1. Connect spit rod support A and B together.
2. Position the connected supports on the cooking grate of your grill.
3. Attach the motor bracket to the grill.
4. Insert the hexagon spit rod into the motor's drive socket and rest the other end on the connected supports (A and B).
5. Lock the spit rod onto the support to ensure stability.



Figure 3: Installation Method B, demonstrating setup for grills with vertical or horizontal bracket holes.

Installation Method C: Horizontal Direction

This method is an alternative for most gas grills, similar to Method B, providing flexibility for horizontal bracket holes.

1. Connect spit rod support A and B together.
2. Position the connected supports on the cooking grate of your grill.
3. Attach the motor bracket to the grill.
4. Insert the hexagon spit rod into the motor's drive socket and rest the other end on the connected supports (A and B).
5. Lock the spit rod onto the support to ensure stability.



Figure 4: Installation Method C, showing the setup for horizontal bracket holes.

Motor Bracket Dimensions

Refer to the diagram below for detailed dimensions of the motor bracket to ensure compatibility with your grill's mounting points.

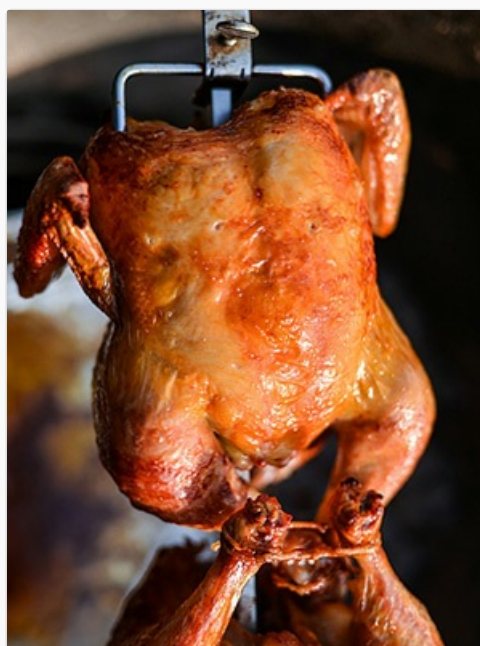


Figure 5: Detailed dimensions of the rotisserie motor bracket for compatibility verification.

OPERATING INSTRUCTIONS

- 1. Prepare Food:** Securely attach your food (e.g., chicken, roast) to the spit rod using the meat forks. Ensure the food is centered and balanced to prevent uneven rotation and motor strain.
- 2. Mount Spit Rod:** With the motor unplugged, carefully place the spit rod with food onto the rotisserie setup, ensuring it is properly seated in the motor's drive socket and the support bracket.
- 3. Power On:** Plug the 110V electric motor into a suitable power outlet.
- 4. Start Rotation:** Turn on the motor. The 6-watt motor will begin rotating the spit rod at a sustained, constant rate, ensuring even cooking.
- 5. Monitor Cooking:** Monitor the cooking process. The rotisserie action helps to self-baste the food, resulting in moist and flavorful results.
- 6. Power Off:** Once cooking is complete, turn off the motor and unplug it from the power outlet.
- 7. Remove Food:** Carefully remove the hot spit rod and food using heat-resistant gloves.

Your browser does not support the video tag.

Video 1: Demonstration of the onlyfire Stainless Steel Universal Grill Rotisserie Kit in operation, showing a roast cooking on a gas grill.

MAINTENANCE AND CARE

- Cleaning:** After each use, allow all components to cool completely. Hand wash the spit rod, meat forks, and support brackets with warm, soapy water. Rinse thoroughly and dry immediately to prevent rust.
- Motor Care:** Wipe the motor housing with a damp cloth. Do not submerge the motor in water. Store the motor in a dry place.
- Storage:** Store the rotisserie kit in a clean, dry environment when not in use to prolong its lifespan.

TROUBLESHOOTING

Problem	Possible Cause	Solution
Motor not turning	Not plugged in; Power outlet issue; Overloaded spit rod; Motor malfunction.	Check power connection; Test outlet with another device; Reduce food weight; Contact customer support.
Uneven rotation	Food not balanced on spit rod; Spit rod not properly seated.	Adjust food position and meat forks for balance; Ensure spit rod is correctly inserted into motor and support.
Spit rod slipping	Meat forks not tightened; Support bracket not secure.	Ensure meat forks are firmly tightened into the food; Verify support bracket is stable and locked.

SPECIFICATIONS

- Model Number:** F-BRK6057-SS1
- Material:** Stainless Steel
- Spit Rod Length:** 28 inches
- Spit Rod Shape:** Hexagon (0.35 inch diameter)

- **Motor Type:** Electric
- **Motor Power:** 6 Watt
- **Motor Voltage:** 110V
- **Maximum Food Capacity:** 40 lbs
- **Item Weight:** 2.3 Kilograms

WARRANTY AND SUPPORT

For warranty information or technical support, please refer to the product packaging or contact onlyfire customer service directly. Keep your purchase receipt as proof of purchase.



© 2026 onlyfire. All rights reserved.