

VOVO VB-6000SE

VOVO VB-6000SE Elongated Bidet Toilet Seat Instruction Manual

Model: VB-6000SE | Brand: VOVO

[Introduction](#) [Safety](#) [Components](#) [Setup](#) [Operating & Support](#) [Maintenance](#) [Troubleshooting](#) [Specifications](#) [Warranty](#)

1. INTRODUCTION

This manual provides detailed instructions for the installation, operation, and maintenance of your VOVO VB-6000SE Elongated Bidet Toilet Seat. This product features warm water, an LED night light, a heated seat, a dryer, and a stainless steel nozzle for enhanced hygiene and comfort.

2. IMPORTANT SAFETY INFORMATION

Please read all instructions carefully before installation and use. Keep this manual for future reference.

- Ensure the power outlet is 120V and properly grounded.
- Do not immerse the product in water or spray water directly onto it.
- Unplug the unit before cleaning or maintenance.
- Do not allow children to operate the bidet without supervision.
- Avoid using abrasive cleaners or harsh chemicals.

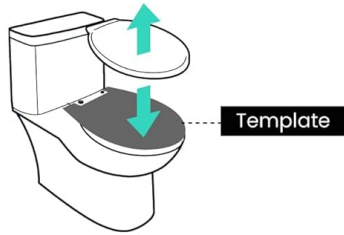
3. PACKAGE CONTENTS

Verify that all components are present before beginning installation:

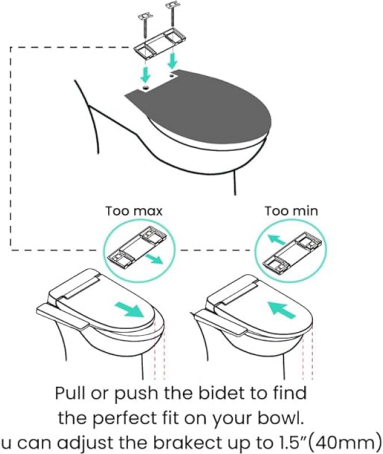
- VOVO VB-6000SE Bidet Toilet Seat
- Wireless Remote Control
- Installation Kit (includes T-valve, hoses, mounting bolts, rubber nuts, washers, base bracket)
- Installation Template
- User Manual

Installation Guide

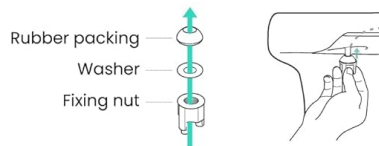
- 1** Remove the existing toilet seat.



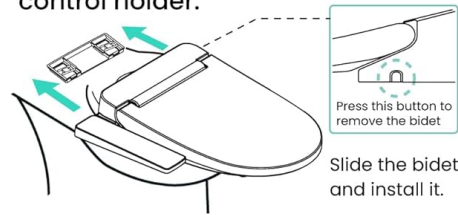
- 2** Install the base bracket.



Back to the toilet



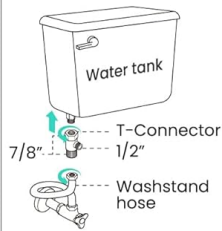
- 3** Install the bidet and secure the remote control holder.



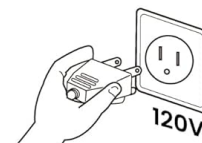
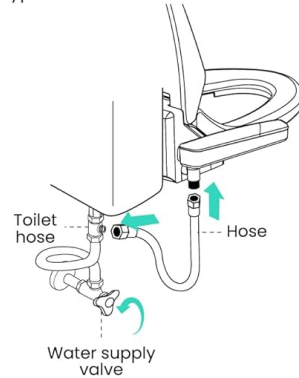
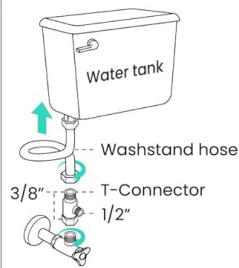
- 4** Connect the hose and turn on the water.

When water pressure is weak, or is difficult to reach the water tank, please use B type.

A type (Standard)



B type



Connect the outlet.

Image: Overview of the bidet toilet seat and its installation components.

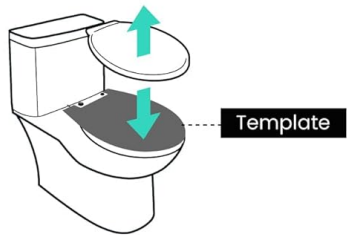
4. INSTALLATION GUIDE

Follow these steps for proper installation of your bidet toilet seat:

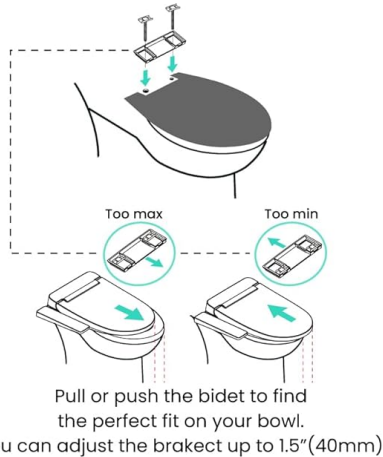
- 1. Prepare the Toilet:** Turn off the water supply to your toilet and flush to empty the tank. Detach the existing water supply hose from the toilet tank.
- 2. Install T-Valve:** Attach the provided T-valve to the toilet tank's water inlet. Reconnect your existing water supply hose to one end of the T-valve.
- 3. Insert Rubber Nuts:** Place the rubber nuts into the mounting holes on your toilet bowl.
- 4. Position Base Bracket:** Use the provided template to align and secure the base bracket onto the toilet bowl using the mounting bolts and washers. Ensure it is firmly tightened.
- 5. Attach Bidet Seat:** Slide the bidet toilet seat onto the secured base bracket until you hear a "click," indicating it is locked into place.
- 6. Connect Bidet Hose:** Connect the new bidet hose from the T-valve to the bidet seat's water inlet. Hand-tighten only.
- 7. Restore Water Supply:** Turn on the main water supply to the toilet and check for any leaks.
- 8. Power Connection:** Plug the bidet seat's power cord into a grounded 120V electrical outlet.

Installation Guide

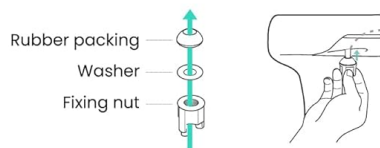
- 1** Remove the existing toilet seat.



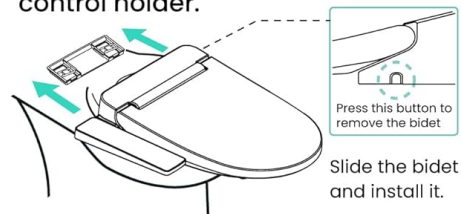
- 2** Install the base bracket.



Back to the toilet



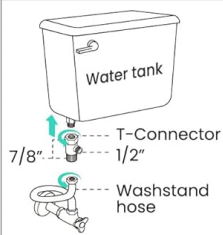
- 3** Install the bidet and secure the remote control holder.



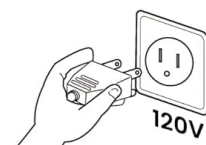
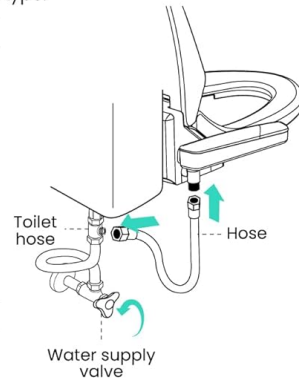
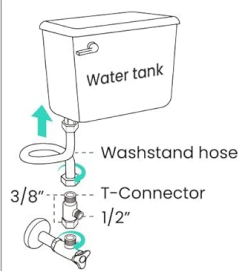
- 4** Connect the hose and turn on the water.

When water pressure is weak, or is difficult to reach the water tank, please use B type.

A type (Standard)



B type



Connect the outlet.

Image: Visual guide for the installation process, showing steps from removing the old seat to connecting water and power.



Image: Simplified installation steps including placing template, installing bracket, sliding bidet, and connecting hoses.

Your browser does not support the video tag.

Video: Official VOVO STYLEMENT Installation Guide. This video demonstrates the complete installation process for the bidet seat, including water connections and mounting.

5. OPERATING INSTRUCTIONS

Your VOVO VB-6000SE bidet toilet seat offers a range of features controlled by the wireless remote. Ensure you are seated on the bidet for functions to activate due to the built-in seat sensor.

5.1 Wireless Remote Control Functions

The smart wireless remote provides easy one-touch operation for all bidet functions:

- **Wash Functions:** Posterior, Feminine, and TURBO WASH.
- **Water Pressure:** Adjust water pressure with 5 different levels.
- **Nozzle Position:** Adjust the nozzle position with 5 different levels.
- **Heated Seat:** 3 levels of adjustable heated seat temperature.
- **Warm Water:** Adjust warm water temperature.
- **Warm Dryer:** 3 levels of adjustable warm air dryer temperature.
- **LED Nightlight:** Turn on/off the soft shining LED nightlight.
- **Nozzle Cleaning:** One-touch self-cleaning function for the stainless steel nozzle.
- **Power Save:** Automatic power save mode to reduce energy consumption.



Image: Layout of the wireless remote control showing all available functions and settings.

5.2 Key Features in Detail

- **Heated Seat:** Enjoy comfort with an optimized seat that maintains an adjustable temperature.
- **Warm Water & Dryer:** The built-in water heating system provides instant warm water, and the air dryer offers 3 adjustable temperatures to reduce the need for toilet paper.
- **LED Night Light:** A soft, subtle LED light illuminates the inner bowl for convenient use during nighttime without needing to turn on bright bathroom lights.
- **Full Stainless Nozzle:** The durable stainless steel nozzle performs feminine, posterior, and TURBO WASH functions with rhythmic movement and 5 different positions. It also features a one-touch self-cleaning function.
- **Soft Close:** The seat and seat cover are designed with a soft-close function to prevent slamming and ensure safety.
- **Seat Sensor:** Bidet functions are activated only when the seat sensor detects a user, preventing accidental sprays.



POWER SAVE

To operate the power saving mode, press the stop button next to the main body without seating.

LED NIGHT LIGHT

The LED night light subtly illuminates the inner bowl for convenient usage during the nighttime.

HEATED SEAT

Optimized seat for human body with adjustable temperature.

Image: Illustrates the heated seat and LED night light features of the bidet seat.



Image: Demonstrates the warm air dryer and soft-close lid functionality.

AUTO NOZZLE & FULL STAINLESS -STEEL NOZZLE CLEANING

As the nozzle comes out and goes in, water comes out and is automatically cleaned. It's not leaking from the nozzle.

Semi-permanent full stainless -steel nozzle performing 3 functions with 5 different levels of water pressure.

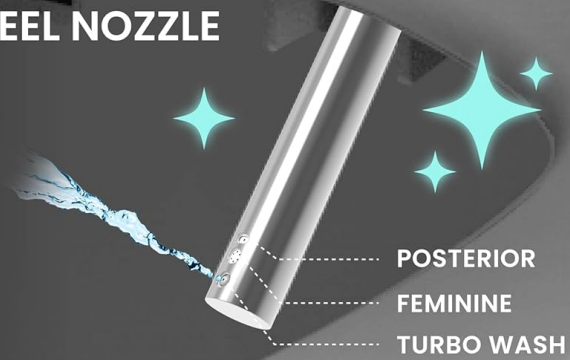


Image: Highlights the automatic nozzle cleaning and the integrated seat sensor.

Your browser does not support the video tag.

Video: A brief overview of the VOVO Stylement bidet features, including the heated seat, warm water, and nozzle functions.

Your browser does not support the video tag.

Video: Detailed review of the VOVO smart bidet, showcasing its heated seat and various functionalities.

6. MAINTENANCE

Regular cleaning and maintenance will ensure the longevity and optimal performance of your bidet toilet seat.

6.1 Nozzle Cleaning

The stainless steel nozzle has a self-cleaning function. Press the 'Nozzle Cleaning' button on the remote control to activate this feature. The nozzle will extend and rinse itself with water.

6.2 General Cleaning

- Always unplug the bidet seat from the power outlet before cleaning.
- Wipe the exterior surfaces with a soft, damp cloth and a mild, non-abrasive detergent.
- Do not use harsh chemicals, benzene, or thinners, as these may damage the surface.
- For thorough cleaning, the bidet seat can be detached from the base bracket by pressing the release button.

7. TROUBLESHOOTING

If you encounter any issues with your VOVO VB-6000SE, please refer to the following common solutions:

Problem	Possible Cause	Solution
No power/LED light off	Not plugged in; Power outage; Unit in power-saving mode.	Check power connection; Verify outlet functionality; Press 'Power' button on unit or remote.
No water spray	Water supply valve closed; Seat sensor not activated; Nozzle clogged.	Open water supply valve; Ensure proper seating; Activate nozzle cleaning function.
Water not warm	Water heater off; Temperature setting too low.	Adjust water temperature setting on remote; Allow time for water to heat.
Heated seat not working	Heated seat function off; Temperature setting too low.	Adjust seat temperature setting on remote.
Dryer not working/not warm	Dryer function off; Temperature setting too low.	Activate dryer function; Adjust dry temperature setting on remote.

8. PRODUCT SPECIFICATIONS

Feature	Detail
Model Number	VB-6000SE
Color	White
Material	Plastic, Stainless Steel (Nozzle)
Item Weight	13.02 pounds (5.92 Kilograms)
Product Dimensions	20.8 x 15 x 5.1 inches
Installation Type	Floor Mounted
Voltage	120 Volts
Included Components	Installation Kit
Batteries	3 AA batteries required (included) for remote control
UPC	850016152213

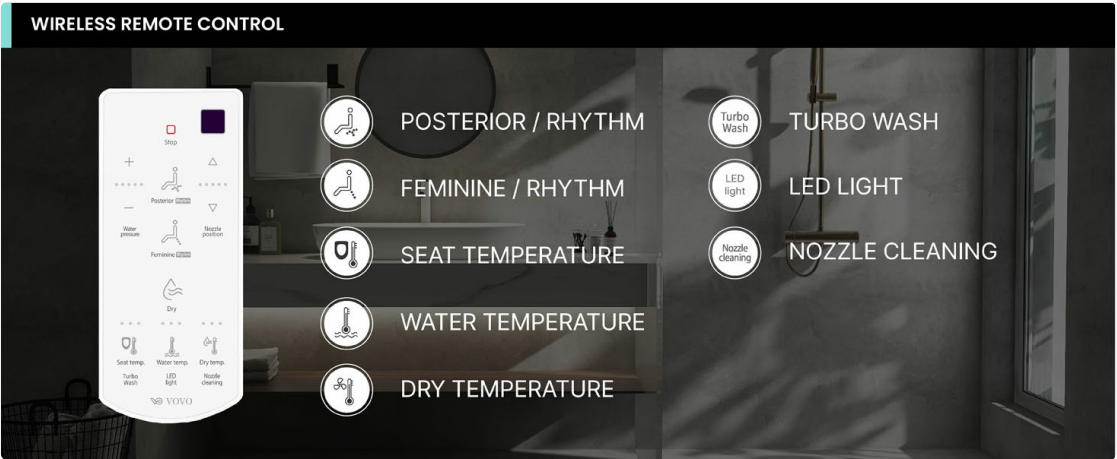


Image: Comparison of elongated and round bidet dimensions, along with the 120V outlet requirement.

9. WARRANTY & SUPPORT

Your VOVO VB-6000SE Bidet Toilet Seat comes with a **1-year limited manufacturer warranty**.

For technical support, troubleshooting assistance, or warranty claims, please contact VOVO customer service:

- **Email:** support@vovousa.com
- **Phone:** Refer to your product packaging or the official VOVO USA website for the most current contact number.