

Amico KOK-6EJCT12SR05

Amico 6-Pack 6-Inch 5CCT Ultra-Thin LED Recessed Ceiling Light Instruction Manual

Model: KOK-6EJCT12SR05

INTRODUCTION

Thank you for choosing the Amico 6-Pack 6-Inch 5CCT Ultra-Thin LED Recessed Ceiling Light. This product is designed for easy installation and offers versatile lighting options with selectable color temperatures and dimming capabilities. Please read this manual thoroughly before installation and operation to ensure safe and efficient use.

SAFETY INFORMATION

- **WARNING:** Risk of electric shock. Disconnect power at the fuse or circuit breaker before installation or servicing.
- Installation must be performed by a qualified electrician in accordance with all national and local electrical codes.
- Do not modify or alter the fixture. Any modifications may void the warranty and create safety hazards.
- Ensure the supply voltage is compatible with the fixture (120V).
- This product is suitable for wet locations.
- **IC Rated:** This fixture is IC rated, meaning it is safe to be in direct contact with insulation in ceilings.

WHAT'S IN THE BOX

Each pack includes the following components:

- 6 x Amico 6-Inch Ultra-Thin LED Recessed Downlights
- 6 x Remote Junction Boxes (with integrated LED driver)
- 1 x 1:1 Hole Template for cutting ceiling openings
- Installation Manual



Image: Contents of the Amico 6-Pack LED Recessed Light kit, showing the lights and junction boxes.

SPECIFICATIONS

Feature	Specification
Brand	Amico
Model Name	KOK-6EJCT12SR05
Size	6 Inch
Color Temperature (CCT)	2700K, 3000K, 3500K, 4000K, 5000K (Selectable)
Wattage	12 Watts
Brightness	1050 Lumens

Feature	Specification
Voltage	120 Volts
Dimmable	5%-100% Smooth Dimmable
IC Rated	Yes
Installation Type	Flush Mount (Canless)
Material	Aluminum
Certifications	ETL, Energy Star
Lifespan	50,000 hours

INSTALLATION

The Amico Ultra-Thin LED Recessed Light is designed for easy installation in both retrofit and new construction applications, requiring no traditional can housing.

- 1. Prepare the Ceiling:** Use the provided 1:1 hole template to mark and cut a 6.25-inch diameter hole in the ceiling. Ensure there are at least 2 inches of clearance above the ceiling for the fixture.

Amico

Super Bright

Upgraded LED chips with higher lm and lower power





Ours

★★★★★

Brightness	Dimmable	Wattage
1050LM	5-100%	12W



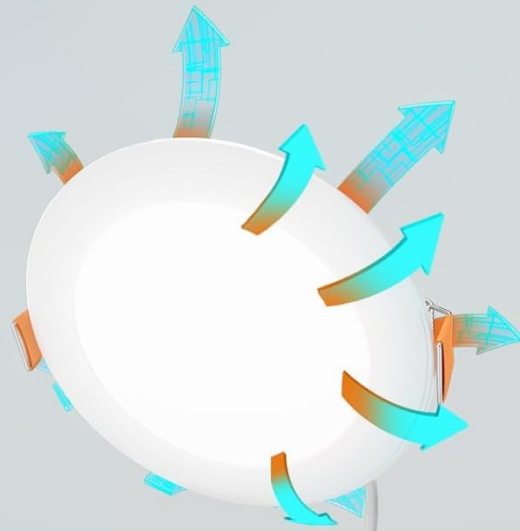
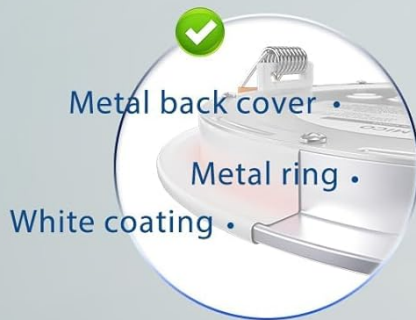
90% up to
cost saving

Image: A person cutting a circular hole in a ceiling using a hole saw and a template.

2. **Connect Wiring:** Open the remote junction box. Connect the household electrical wires (black to black, white to white, ground to ground) to the wires inside the junction box using the provided wire connectors. Ensure all connections are secure.

Metal Material

Safety & sturdy & durable



Ours Aluminum

- ✓ Superior Heat Dissipation 48W/mk
- ✓ Sturdy & durable
- ✓ ETL certified, no fire hazard

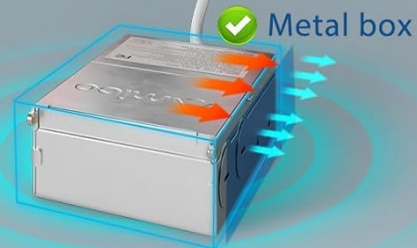


Image: A close-up of the junction box with internal wiring connections, showing the color temperature selection switch.

3. **Select Color Temperature:** Before closing the junction box and inserting it into the ceiling, use the slide switch located on the side of the junction box to select your desired color temperature (2700K, 3000K, 3500K, 4000K, or 5000K).
4. **Position Junction Box:** Close the junction box cover and push the box through the cut-out hole into the ceiling cavity.
5. **Connect Light Fixture:** Connect the male connector from the light fixture to the female connector extending from the junction box. Ensure a tight connection.
6. **Mount Light Fixture:** Push the spring clips on the sides of the light fixture upwards and insert the fixture into the ceiling hole. Release the clips to secure the fixture flush against the ceiling.

5 CCT in One

Free to choose any ambiance you want



Image: A person connecting the light panel to the junction box cable and then pushing the light into the ceiling opening.

For a visual guide on the installation process, please refer to the video below:

Video: An official Amico-usa video demonstrating the installation of the 5CCT Slim Downlight. It shows the components, the color temperature switch, and the simple installation steps.

OPERATING INSTRUCTIONS

The Amico LED Recessed Light offers adjustable color temperature and dimming functionality.

Color Temperature Selection

The color temperature (CCT) can be adjusted using the slide switch on the side of the junction box. This allows you to choose from 5 different settings:

- **2700K (Soft White):** Ideal for bedrooms and cozy living spaces.
- **3000K (Warm White):** Suitable for bathrooms and general ambient lighting.

- **3500K (Neutral White):** Good for offices and task lighting.
- **4000K (Cool White):** Bright and crisp, often used in kitchens.
- **5000K (Daylight):** Very bright, simulating natural daylight, suitable for living rooms or utility areas.

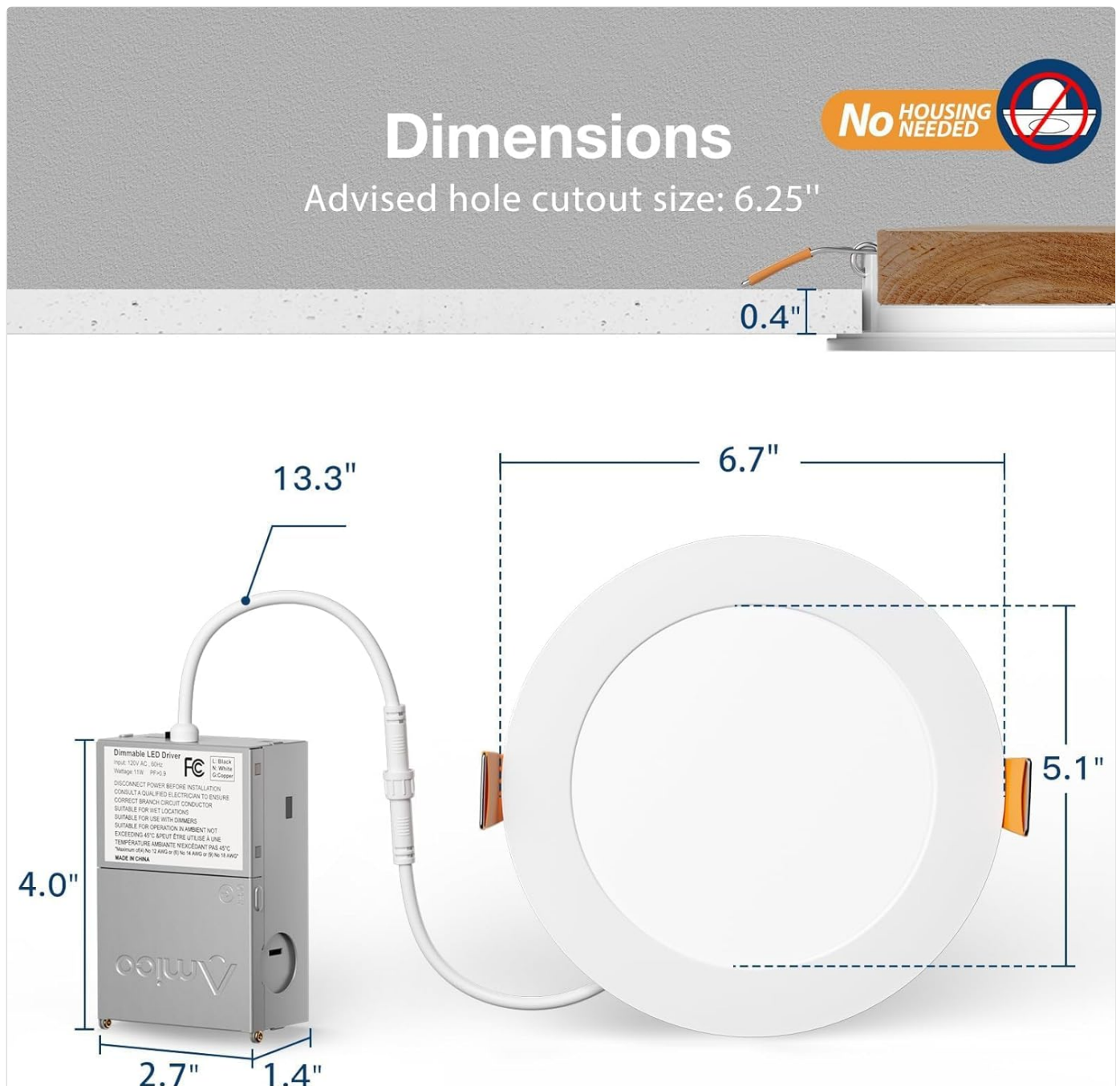


Image: A visual representation of the five selectable color temperatures (2700K to 5000K) and their suggested applications in various rooms like study, bedroom, bathroom, living room, and kitchen.

Dimming Functionality

This LED recessed light is compatible with most standard LED dimmers, allowing for smooth dimming from 5% to 100% brightness. Ensure your dimmer switch is compatible with LED lighting for optimal performance. Smart dimmers are generally not recommended.

Stepless Dimming

Matches most dimmers on the market

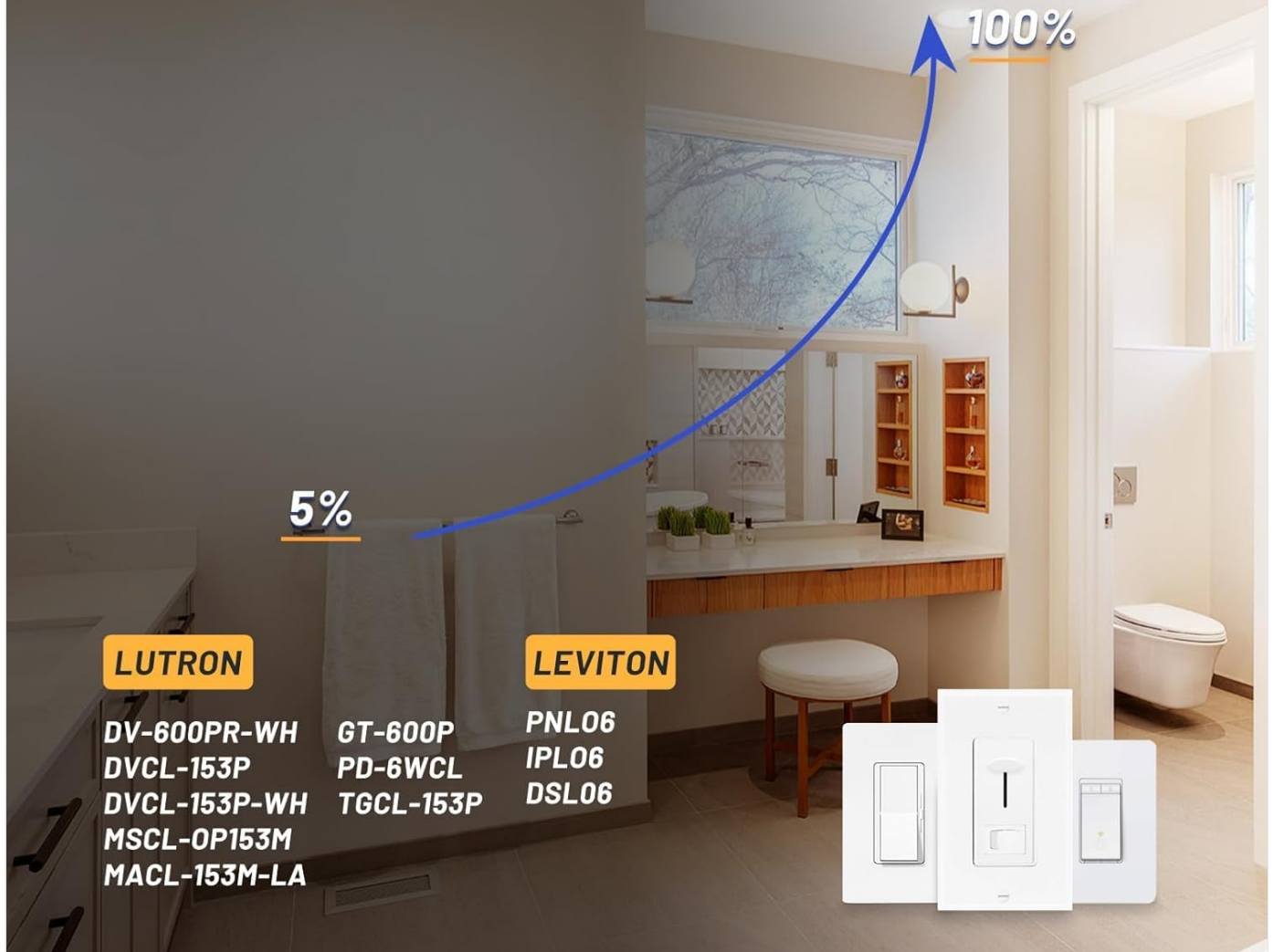


Image: An illustration showing the dimming range from 5% to 100% and examples of compatible dimmer brands like Lutron and Leviton.

MAINTENANCE

The Amico LED Recessed Light requires minimal maintenance due to its long lifespan of 50,000 hours. No bulb replacement is necessary.

- **Cleaning:** To clean the fixture, ensure power is off. Use a soft, dry, or slightly damp cloth. Avoid abrasive cleaners or solvents that could damage the finish or electrical components.
- **Inspection:** Periodically inspect the fixture for any signs of damage or loose connections. If any issues are found, consult a qualified electrician.

TROUBLESHOOTING

Problem	Possible Cause	Solution
---------	----------------	----------

Problem	Possible Cause	Solution
Light does not turn on	No power supply, loose wiring, incorrect CCT selection, faulty fixture.	Check circuit breaker/fuse. Verify all wire connections. Ensure CCT switch is set correctly. Test with another fixture if available.
Light flickers	Incompatible dimmer switch, loose wiring, voltage fluctuations.	Ensure dimmer is LED compatible. Check wiring connections. Consult electrician for voltage issues.
Incorrect color temperature	CCT switch set incorrectly.	Adjust the slide switch on the junction box to the desired CCT.
Dimming not working	Incompatible dimmer switch.	Replace with a compatible LED dimmer switch.

WARRANTY & SUPPORT

Amico provides a **5-year warranty** for this product, covering defects in materials and workmanship under normal use. For any concerns or technical assistance, please contact our customer support team. We are committed to addressing your inquiries within 12 hours.

For further information or to register your product, please visit the official Amico website or contact our customer service department.