

Manuals+

[Q & A](#) | [Deep Search](#) | [Upload](#)

manuals.plus /

- › [Ripack](#) /
- › [Ripack Heat Gun Swivel Connector \(Part #148043\) Instruction Manual](#)

Ripack MSW-902-148043

Ripack Heat Gun Swivel Connector (Part #148043) Instruction Manual

1. PRODUCT OVERVIEW

This manual provides instructions for the Ripack Heat Gun Swivel Connector, Part #148043. This component is designed to provide flexible movement for the heat gun hose connection, enhancing maneuverability during operation. It is compatible with Ripack heat gun models 2000, 2200, and 3000.



Figure 1: Ripack Heat Gun Swivel Connector (Part #148043). This image shows the brass swivel connector from a front-facing perspective, highlighting its threaded ends and central swivel joint.

2. SETUP AND INSTALLATION

The swivel connector facilitates a flexible connection between the heat gun and its gas supply hose. Follow these steps for proper installation:

1. **Preparation:** Ensure the heat gun is disconnected from its fuel source and has completely cooled down.
2. **Connect to Heat Gun:** Thread one end of the swivel connector onto the heat gun's gas inlet. Hand-tighten first to ensure proper alignment.
3. **Connect Hose:** Attach the gas supply hose to the other end of the swivel connector. Hand-tighten to start.
4. **Secure Connections:** Use an appropriate wrench to securely tighten both connections. Do not overtighten, as this can damage threads or seals. The connections should be firm and leak-free.
5. **Leak Check:** After installation, reconnect the gas supply and perform a leak check using a suitable leak detection solution (e.g., soapy water). Apply the solution to all connections. The presence of bubbles indicates a leak. If a leak is detected, immediately shut off the gas supply and re-tighten connections or replace faulty components.



Figure 2: Swivel Connector, side view. This image displays the swivel connector from a side angle, showing the hexagonal nuts for wrench tightening and the articulation of the joint.

3. OPERATION

Once installed and checked for leaks, the swivel connector allows the heat gun to rotate freely at the connection point with the gas hose. This flexibility reduces hose kinking and improves the overall handling and maneuverability of the heat gun during operation. Ensure the swivel mechanism moves smoothly without obstruction during use.

4. MAINTENANCE

Regular inspection and maintenance are crucial for the safe and efficient operation of your Ripack heat gun system:

- **Visual Inspection:** Before each use, visually inspect the swivel connector for any signs of wear, corrosion, cracks, or other damage.
- **Thread and Seal Check:** Examine the threads and sealing surfaces for integrity. Ensure no debris is lodged in the mechanism.
- **Swivel Function:** Verify that the connector swivels freely and smoothly without excessive play or stiffness.
- **Replacement:** If any damage, excessive wear, or restricted movement is observed, replace the connector immediately with a genuine Ripack Part #148043 to ensure safe and reliable operation.

5. TROUBLESHOOTING

- **Gas Leakage:** If gas leakage is detected around the connector, immediately shut off the gas supply. Check that the connector is properly tightened and that any sealing washers (if applicable) are in good condition and correctly seated. If leakage persists after re-tightening, the connector may be faulty and requires replacement.
- **Restricted Swivel Movement:** If the connector does not swivel freely, inspect for any debris, dirt, or damage that might be impeding its movement. Do not attempt to force the swivel. If the issue cannot be resolved by cleaning, replacement may be necessary.

6. SPECIFICATIONS

- **Product Dimensions:** 2 x 1.5 x 0.75 inches
- **Item Model Number:** MSW-902-148043
- **Manufacturer:** Ripack
- **ASIN:** B087H3VBKT

7. PARTS DIAGRAMS AND IDENTIFICATION

The Ripack Swivel Connector, Part #148043, is an integral component of Ripack heat gun systems. Refer to the following diagrams for its location within the Ripack 2000 and Ripack 2200 models.

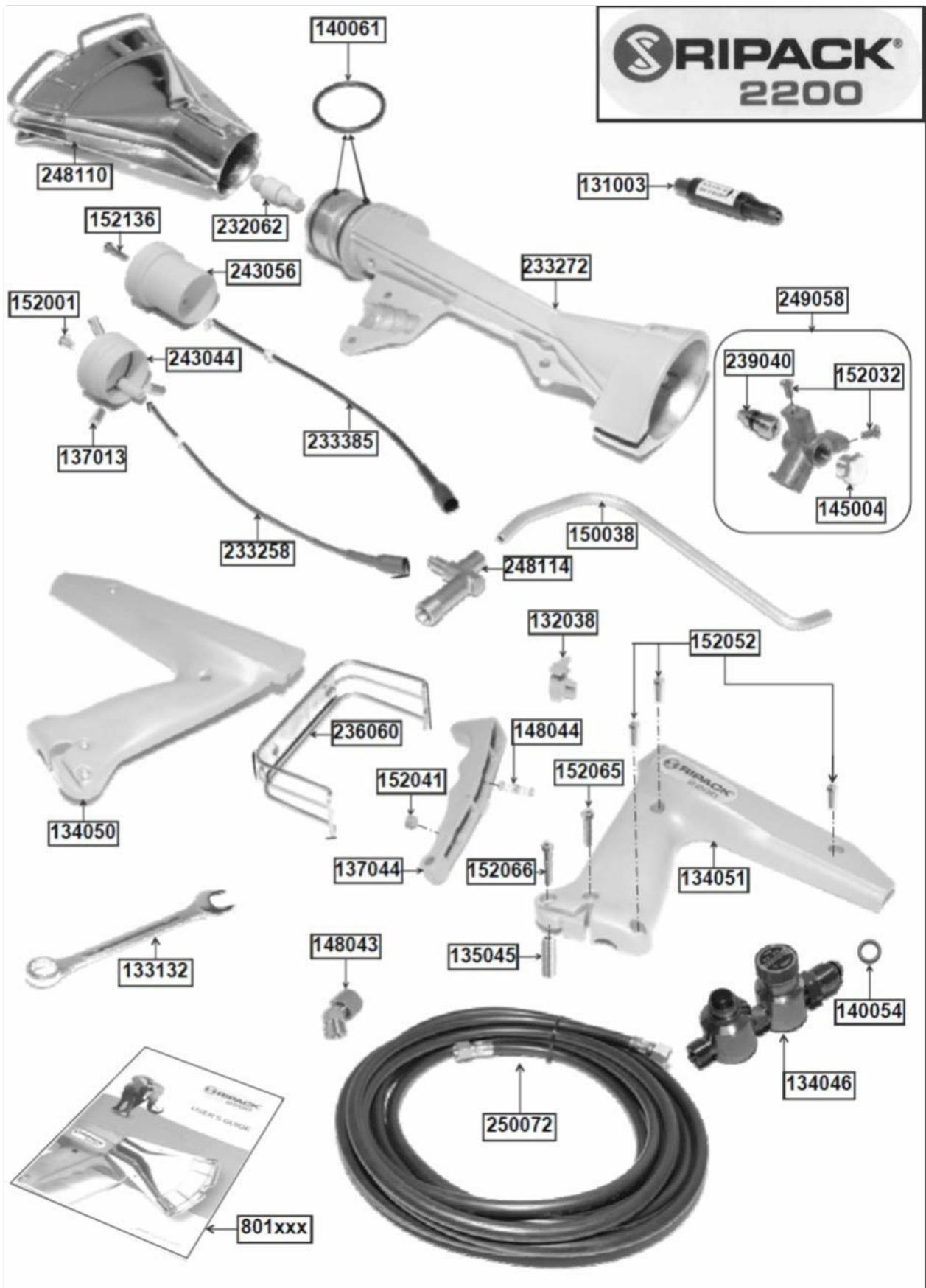


Figure 3: Ripack 2000 Heat Gun Exploded Diagram. Part #148043, the swivel connector, is located near the base of the handle, connecting to the gas hose.

Code article	Désignation
131003	Piezo igniter for RIPACK 2200 without extension
131072	Piezo igniter for RIPACK 2200 with extension
132038	Handle front block
133132	Wrench 19
134046	SECURIPACK- including adjustable pressure regulator and double safety, US-BS standard
134050	Half-handle, right
134051	Half-handle, left
135045	Trigger spacer
137013	Flute pin 3x6 for RIPACK 2200 before serial No. 09.197868 (week 04/09)
137044	Trigger
140054	O-RING on SECURIPACK US/BS
140061	O-ring - inside Ø 28.24 x Ø 2.62 UL
143005	Double connector 3/8 G
145004	Jet cover nut
145005	Jet cover nut special for natural gas
148001	Fan washer Ø 4
148043	Swivel connector
148044	Trigger return spring
148082	Stainless steel washer Ø 47.5 for air reducer for natural gas conversion kit
148086	Male mains connector 3/8 G 15/21 (1/2) for natural gas conversion kit
150038	Gas brass tube
152001	Stainless steel slotted screw TC M3x4 on RIPACK 2200 before serial No. 09.197868 (week 04/09)
152032	Slotted screw TC M4x8
152041	Nylon setscrew M8x6 - Tap adjustment
152052	Screw CHc M4x16
152065	Screw CHc M4x25
152066	Screw CHc M4x30
152118	Safety valve 3/8 5 kg/h for natural gas conversion kit
152136	Slotted screw TC M3x12 for 2200 after serial No. 09.197869 (week 05/09)
232062	Spark plug

Figure 4: Ripack 2200 Heat Gun Exploded Diagram. Part #148043, the swivel connector, is located near the base of the handle, connecting to the gas hose.

Parts List Reference

The following table provides a detailed list of parts, including the Swivel Connector (Part #148043).

Code Article	Désignation
--------------	-------------



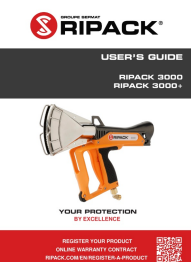

Code Article	Désignation
131003	Piezo igniter for RIPACK 2200 without extension
131072	Piezo igniter for RIPACK 2200 with extension
132038	Handle front block
133132	Wrench 19
134046	SECURIPACK- including adjustable pressure regulator and double safety, US-BS standard
134050	Half-handle, right
134051	Half-handle, left
135045	Trigger spacer
137013	Flute pin 3x6 for RIPACK 2200 before serial No. 09.197868 (week 04/09)
137044	Trigger
140054	O-RING on SECURIPACK US/BS
140061	O-ring - inside Ø 28.24 x Ø 2.62 UL
143005	Double connector 3/8 G
145004	Jet cover nut
145005	Jet cover nut special for natural gas
148001	Fan washer Ø 4
148043	Swivel connector
148044	Trigger return spring
148082	Stainless steel washer Ø 47.5 for air reducer for natural gas conversion kit
148086	Male mains connector 3/8 G 15/21 (1/2) for natural gas conversion kit
150038	Gas brass tube
152001	Stainless steel slotted screw TC M3x4 on RIPACK 2200 before serial No. 09.197868 (week 04/09)
152032	Slotted screw TC M4x8
152041	Nylon setscrew M8x6 - Tap adjustment
152052	Screw CHc M4x16
152065	Screw CHc M4x25
152066	Screw CHc M4x30
152118	Safety valve 3/8 5 kg/h for natural gas conversion kit



Code Article	Désignation
152136	Slotted screw TC M3x12 for 2200 after serial No. 09.197869 (week 05/09)
232062	Spark plug

8. WARRANTY AND SUPPORT

For warranty information or technical support regarding the Ripack Heat Gun Swivel Connector (Part #148043) or other Ripack products, please contact Ripack customer service or your authorized Ripack dealer. Refer to your heat gun's main instruction manual for complete warranty details and contact information.

Related Documents - MSW-902-148043

 <p>RIPACK EXPLODED VIEW AND SPARE PARTS RIPACK 2500</p> <p>YOUR PROTECTION</p>	<p>RIPACK 2500 Exploded View and Spare Parts List</p> <p>Detailed exploded view and comprehensive spare parts list for the RIPACK 2500 heat gun, including part codes, descriptions, and pressure regulator information.</p>
 <p>RIPACK INSTRUCCIONES DE USO RIPACK 3000 RIPACK 3000+</p> <p>LA PROTECCION</p>	<p>RIPACK 3000/3000+ Propane Heat Gun User Manual and Safety Instructions</p> <p>Comprehensive user manual and safety guide for the RIPACK 3000 and RIPACK 3000+ propane-powered heat guns, covering operation, maintenance, troubleshooting, and warranty information.</p>
 <p>RIPACK USER'S GUIDE RIPACK 3000 RIPACK 3000+</p> <p>YOUR PROTECTION BY EXCELLENCE</p> <p>REGISTER YOUR PRODUCT ONLINE WARRANTY CONTRACT RIPACK.COM/EN/REGISTER-A-PRODUCT</p>	<p>Ripack 3000 & 3000+ User's Guide: Professional Shrink Gun Operation and Safety</p> <p>Comprehensive user's guide for the Ripack 3000 and 3000+ propane-fired shrink guns, covering safe operation, maintenance, technical specifications, and warranty information for professional use in shrink-wrapping applications.</p>
 <p>RIPACK USER'S GUIDE RIPACK 3000 RIPACK 3000+</p> <p>YOUR PROTECTION BY EXCELLENCE</p> <p>REGISTER YOUR PRODUCT ONLINE WARRANTY CONTRACT RIPACK.COM/EN/REGISTER-A-PRODUCT</p>	<p>Ripack 3000 & 3000+ User's Guide: Professional Shrink Wrapping</p> <p>Comprehensive user's guide for the Ripack 3000 and 3000+ propane-fired shrink guns. Covers safety warnings, operation, connections, maintenance, troubleshooting, and warranty information for professional shrink-wrapping applications.</p>

 The cover of the Ripack 3000 & 3000+ User's Guide. It features the Ripack logo at the top, followed by the title 'USER'S GUIDE' and 'RIPACK 3000 RIPACK 3000+'. Below this is an image of the orange and black propane shrink gun. At the bottom, it says 'YOUR PROTECTION' and has a QR code.	<p>Ripack 3000 & 3000+ User's Guide: Professional Propane Shrink Gun Operation and Safety</p> <p>Comprehensive user's guide for the Ripack 3000 and 3000+ propane-fired shrink guns. Covers safety warnings, operation, connections, maintenance, technical specifications, spare parts, and warranty information for professional shrink-wrapping applications.</p>
 The cover of the Ripack 3000 & 3000+ User Manual. It features the Ripack logo at the top, followed by the title 'INSTRUCCIONES DE USO' and 'RIPACK 3000 RIPACK 3000+'. Below this is an image of the orange and black propane shrink gun. At the bottom, it says 'LA PROTECCION POR EXCELENCIA' and has a QR code.	<p>RIPACK 3000 & 3000+ User Manual: Instructions, Safety, and Maintenance</p> <p>Comprehensive user manual for the RIPACK 3000 and 3000+ propane heat guns, covering operating instructions, safety warnings, technical specifications, maintenance, troubleshooting, and warranty information for professional shrink wrapping applications.</p>