

## symcode MJ-9203

# Symcode 2D QR Barcode Scanner Instruction Manual

Model: MJ-9203 | Brand: Symcode

## 1. PRODUCT OVERVIEW

The Symcode 2D QR Barcode Scanner is an omnidirectional, hands-free automatic barcode reader designed for efficient scanning of 1D and 2D barcodes from various surfaces, including labels, paper, mobile phones, and computer screens. Its robust design and automatic sensing capabilities make it ideal for point-of-sale systems and inventory management.



Figure 1.1: Symcode 2D QR Barcode Scanner (Black model).

18 LED distributed lighting in the window, with hat eaves design, no irritation to human eyes.

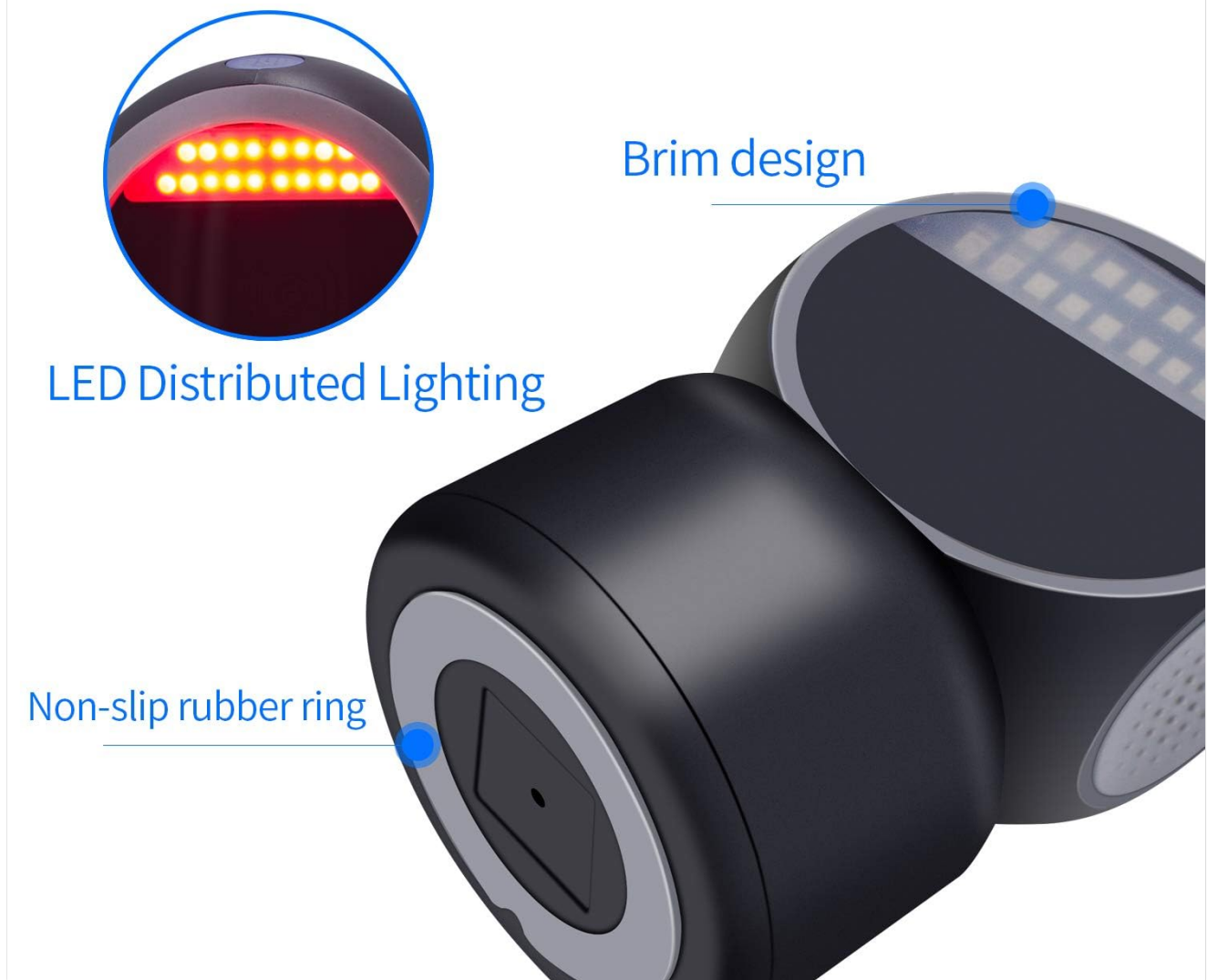


Figure 1.2: The scanner features 18 LED distributed lighting in the scanning window, designed with a hat eaves to prevent irritation to human eyes.

Scanning platform size : 140mmx81mmx81mm

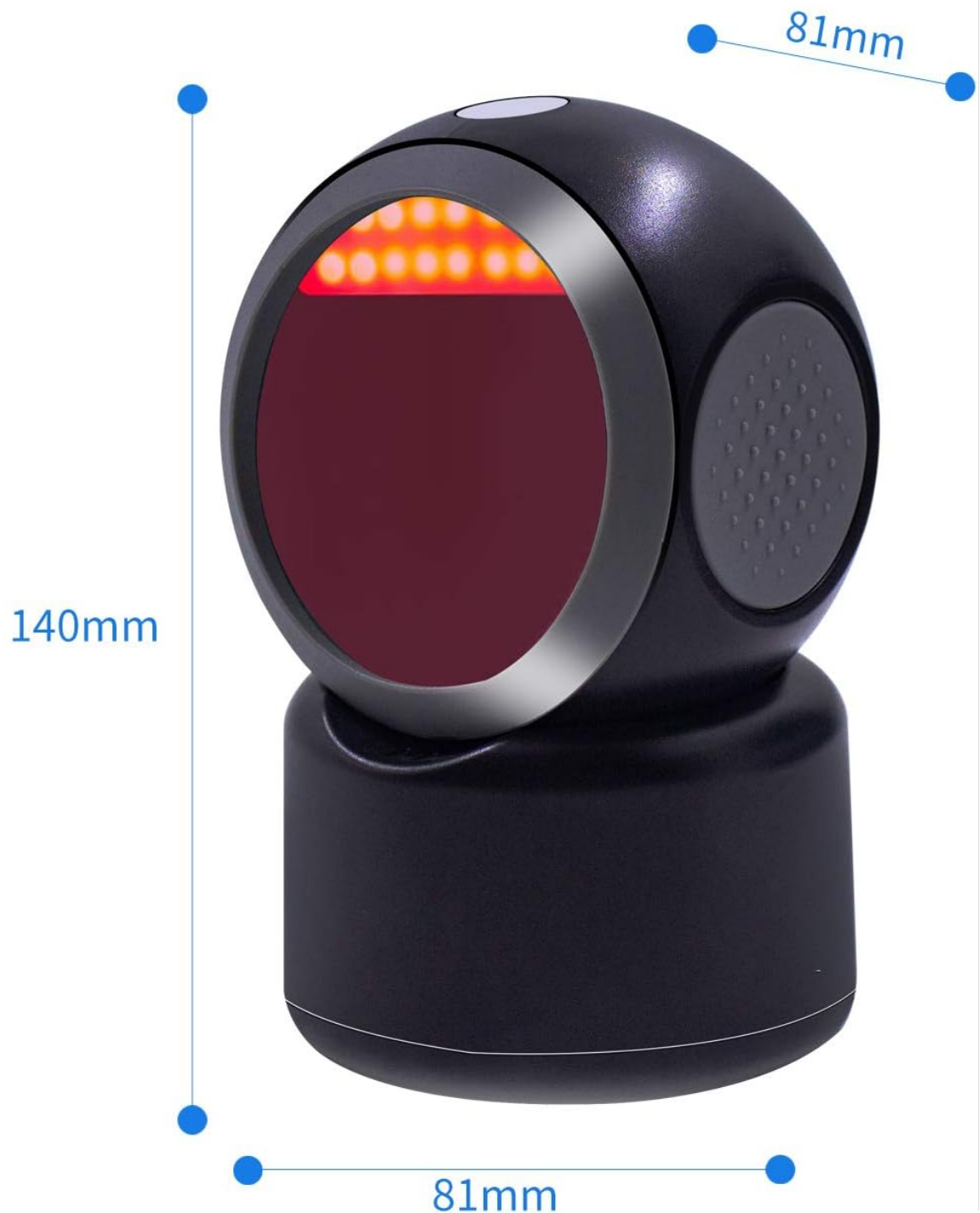


Figure 1.3: Physical dimensions of the scanning platform: 140mm (height) x 81mm (width) x 81mm (depth).

## 2. SETUP

### 2.1 Unboxing the Scanner

Carefully open the product packaging and remove the scanner, USB cable, and user manual. Ensure all components are present before proceeding with setup.

Your browser does not support the video tag.

Video 2.1: This video demonstrates the unboxing process of the Symcode 2D QR Barcode Scanner, showing how to safely remove the device and its accessories from the packaging.

## 2.2 Connecting the Scanner

The Symcode barcode scanner is designed for plug-and-play functionality, requiring no driver installation for most operating systems. Simply connect the scanner to your computer using the provided USB cable.



Figure 2.1: Connect the scanner to your computer using the USB cable. No additional drivers are typically required for operation.

The scanner supports various operating systems including Windows, Android, Mac, and Linux. It offers multiple transport connections for versatility.





Figure 2.2: The scanner supports multiple transport connections, including USB, Serial, and TTL transmission, offering flexible integration options.

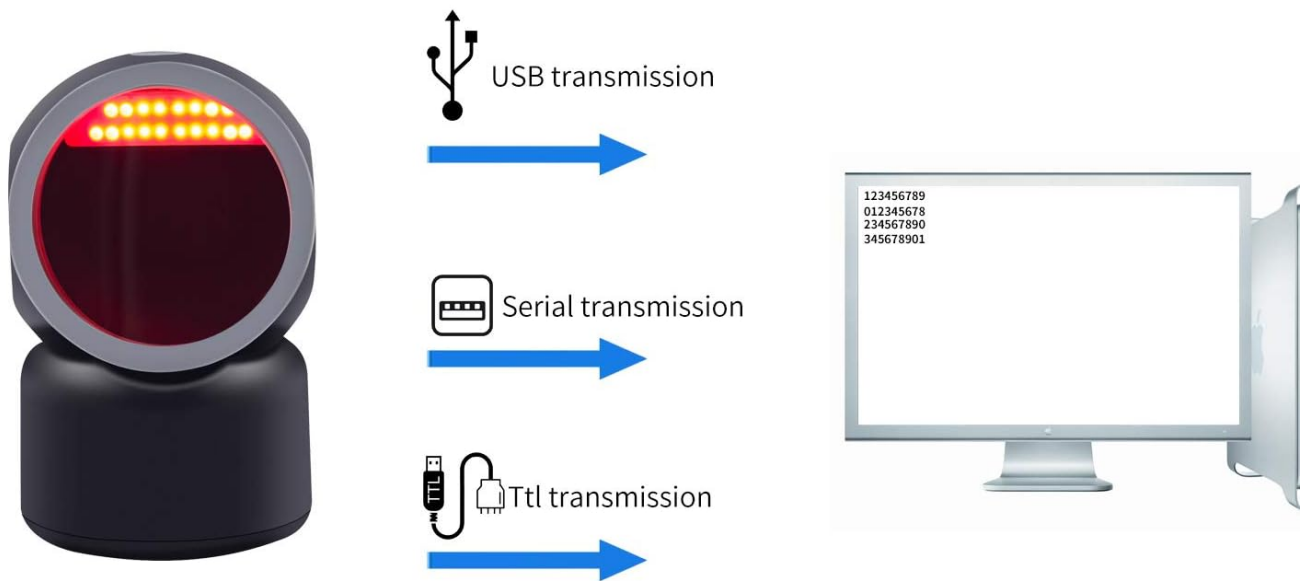
### 3. OPERATING INSTRUCTIONS

#### 3.1 Automatic Scanning Mode

The scanner features an automatic working mode. When a barcode is brought close to the scanning window, the scanner will automatically activate and read the code. If no barcode is detected for a period, it will enter a power-saving mode with no light.

# Multiple transport connections

A variety of transport connections are easy to use



1D: EAN-8、 EAN-13、 EAN-13 2 add-on、 EAN-13 5 add-on、 ISSN、 ISBN、 UPC-A、 UPC-E、 Code11、 Code 32、 Code 39、 Code 93、 Code 128、 Codabar、 Industrial 2 of 5、 Interleaved 2 of 5、 Matrix 2 of 5、 GS1-128、 GS1 DataBar(RSS14)、 GS1 DataBar Limited、 GS1 DataBar Expanded

2D: PDF417、 MicroPDF417、 MicroQR, Data Matrix、 QR、 Aztec

Figure 3.1: The scanner intelligently sleeps when idle and wakes up automatically when an object is presented for scanning.

## 3.2 Scanning 1D Barcodes

To scan 1D barcodes, simply place the barcode within the scanning area. The scanner will automatically detect and decode the barcode. The top button allows switching between normal scanning mode and 1D fast scanning mode for optimized performance.

Your browser does not support the video tag.

Video 3.1: This video demonstrates the process of scanning various 1D barcodes using the Symcode scanner, highlighting its automatic detection and decoding capabilities.

## 3.3 Scanning 2D/QR Barcodes

The scanner is equipped with CCD Optical Imaging Scanning Technology, enabling it to easily capture 2D barcodes, including QR Codes, Data Matrix, and PDF417, even from mobile phone or computer displays. This technology effectively compensates for incomplete or fuzzy codes.

# 2D & 1D Super Decoding Ability

Even blurring, incomplete 2D & 1D codes can be decoded.



Figure 3.2: The scanner boasts super decoding ability for both 1D and 2D codes, including those that are blurred or incomplete.

Your browser does not support the video tag.

Video 3.2: This video illustrates the scanner's capability to read 2D barcodes, such as QR codes, from various sources including screens and printed materials.

The hands-free and auto-sense design allows cashiers to use both hands for handling goods, improving efficiency.

## 4. MAINTENANCE

### 4.1 Cleaning the Scanner

To ensure optimal performance, regularly clean the scanning window with a soft, lint-free cloth. Avoid using abrasive cleaners or solvents that could damage the surface.

### 4.2 Durability and Handling

The scanner features a robust design built to withstand typical operational environments. It is designed to survive



falls from a height of 5 feet (1.5 meters) onto concrete, ensuring durability in busy settings.



## Plug & Play No Driver

Connect to your computer only need a usb cord ,no driver.

Figure 4.1: The scanner's anti-shock design ensures it remains functional even after multiple drops from a height of 1.5 meters.

The scanner also features an adjustable head, allowing for a 30-degree tilt to optimize scanning angles for various items.



Screen



2D



1D



USB

30°

Adjustable Head

Figure 4.2: The scanner's head can be adjusted by 30 degrees for ergonomic and efficient scanning.

## 5. TROUBLESHOOTING

### Common Troubleshooting Steps

Problem	Possible Cause	Solution
Scanner not responding / No light	Not powered on, loose USB connection, power-saving mode.	Ensure USB cable is securely connected. Wave a hand or object in front of the scanner to wake it from power-saving mode. Try a different USB port.

Problem	Possible Cause	Solution
Barcode not scanning / Inconsistent reads	Barcode damaged/poor quality, incorrect scanning angle, scanner not in correct mode, screen glare.	Ensure the barcode is flat and clear. Adjust the scanning angle. Try switching between normal and fast 1D scanning modes using the top button. Minimize glare when scanning from screens.
Scanner not recognized by computer	USB port issue, operating system conflict (rare).	Try connecting to a different USB port. Restart your computer. While typically plug-and-play, ensure your operating system is up to date.
Incorrect data output	Language settings, prefix/suffix settings.	Refer to the full user manual for advanced configuration options, including language settings and adding/hiding characters.

If you encounter persistent issues, please refer to the comprehensive user manual included with your product or contact Symcode customer support.

## 6. SPECIFICATIONS

### Product Specifications

Feature	Detail
Model Number	MJ-9203
Product Dimensions	5.51 x 3.19 x 3.19 inches (140mm x 81mm x 81mm)
Item Weight	10.6 ounces
Connectivity Technology	USB Cable
Compatible Devices	Laptop (and other devices supporting USB input)
Power Source	Corded Electric
Decode Capability (1D)	EAN-8, EAN-13, Codabar, CODE 39, CODE 93, CODE 128, China Post, GS1-128, UPC-A, UPC-E, ISBN/ISSN, ISBT, Interleaved 2 of 5, Standard 2 of 5, Matrix 2 of 5, Industrial 2 of 5, MSI, RSS, ITF14, Telepen, etc.
Decode Capability (2D)	QR Code, Micro QR Code, Data Matrix, PDF417, Micro PDF417, etc.
Manufacturer	Symcode

Feature	Detail
First Available Date	April 2, 2019

## 7. WARRANTY AND SUPPORT

### 7.1 Product Warranty

For information regarding the product warranty, please refer to the warranty card included in your product packaging or contact Symcode customer service directly. Extended protection plans may also be available for purchase.

- 3-Year Protection Plan (Optional)
- 4-Year Protection Plan (Optional)
- Complete Protect (Monthly subscription, covers eligible past and future purchases)

### 7.2 Customer Support

If you require further assistance, technical support, or have questions about your Symcode 2D QR Barcode Scanner, please contact Symcode customer support. You can typically find contact information in your product's documentation or on the official Symcode website.

Visit the official Symcode store for more information:[Symcode Store on Amazon](#)