



[Manuals.plus](#) /

> [DOGAIN](#) /

> DOGAIN Active Digital Stylus Pen (Model KZ-02) User Manual

## DOGAIN KZ-02

# DOGAIN Active Digital Stylus Pen (Model KZ-02) User Manual

Brand: DOGAIN | Model: KZ-02

## 1. INTRODUCTION

Thank you for choosing the DOGAIN Active Digital Stylus Pen. This stylus is designed to provide a smooth and precise writing and drawing experience on various touchscreen devices. Please read this manual carefully to ensure proper use and to maximize the lifespan of your device.

## 2. PRODUCT FEATURES

- **Fine 1.5mm Tip:** Equipped with a 1.5mm fine tip for precise writing and drawing.
- **Rechargeable Battery:** Built-in battery provides approximately 8 hours of active use on a 60-minute charge.
- **User-Friendly Design:** Simple one-button operation (blue light indicates active use).
- **Smooth Performance:** Designed for no delay and no slip, providing a solid line experience.
- **Wide Compatibility:** Works with most touchscreen devices, including iOS and Android smartphones and tablets.
- **Durable Construction:** Made from aluminum for a lightweight yet sturdy design.

# Smart stylus pen

Give you real writing experience



*Image: The DOGAIN Active Digital Stylus Pen in use, demonstrating smooth writing on a tablet screen.*

## 3. SETUP GUIDE

### 3.1 Initial Charging

1. Locate the Micro USB charging port at the end of the stylus (under the magnetic cap).
2. Connect the stylus to a 5V power source using the provided Micro USB cable.
3. The indicator light will be **red** while charging and turn **green** when fully charged.
4. A full charge takes approximately 60 minutes and provides about 8 hours of active use.

# Charge 60-90 minutes, use 8 hours

● charging

● full

● working



*Image: The stylus connected to a Micro USB cable for charging, with indicator lights showing charging status.*

## 3.2 Powering On/Off

- To turn on, press the power button once. The indicator light will turn **blue**.
- To turn off, press the power button again. The indicator light will turn off.

## 4. OPERATING INSTRUCTIONS

The DOGAIN Active Digital Stylus Pen is ready to use immediately after powering on. No Bluetooth pairing is required for most devices.

- Simply touch the stylus tip to your touchscreen device to begin writing, drawing, or navigating.
- The 1.5mm fine tip allows for precise input, ideal for detailed tasks.

# Sensitive and Precise

Smooth writing and drawing. Offers you one similar bale experience like real pencil on paper.



*Image: A hand using the DOGAIN stylus to draw on a tablet, highlighting its sensitive and precise functionality.*

# Applicable Scene

Suitable for writing, drawing, sketching, playing games, typing in various scenes...



Image: Various applications of the stylus, including writing, drawing, sketching, and playing games on different devices.

## 5. COMPATIBILITY

The DOGAIN Active Digital Stylus Pen is widely compatible with most touchscreen devices.

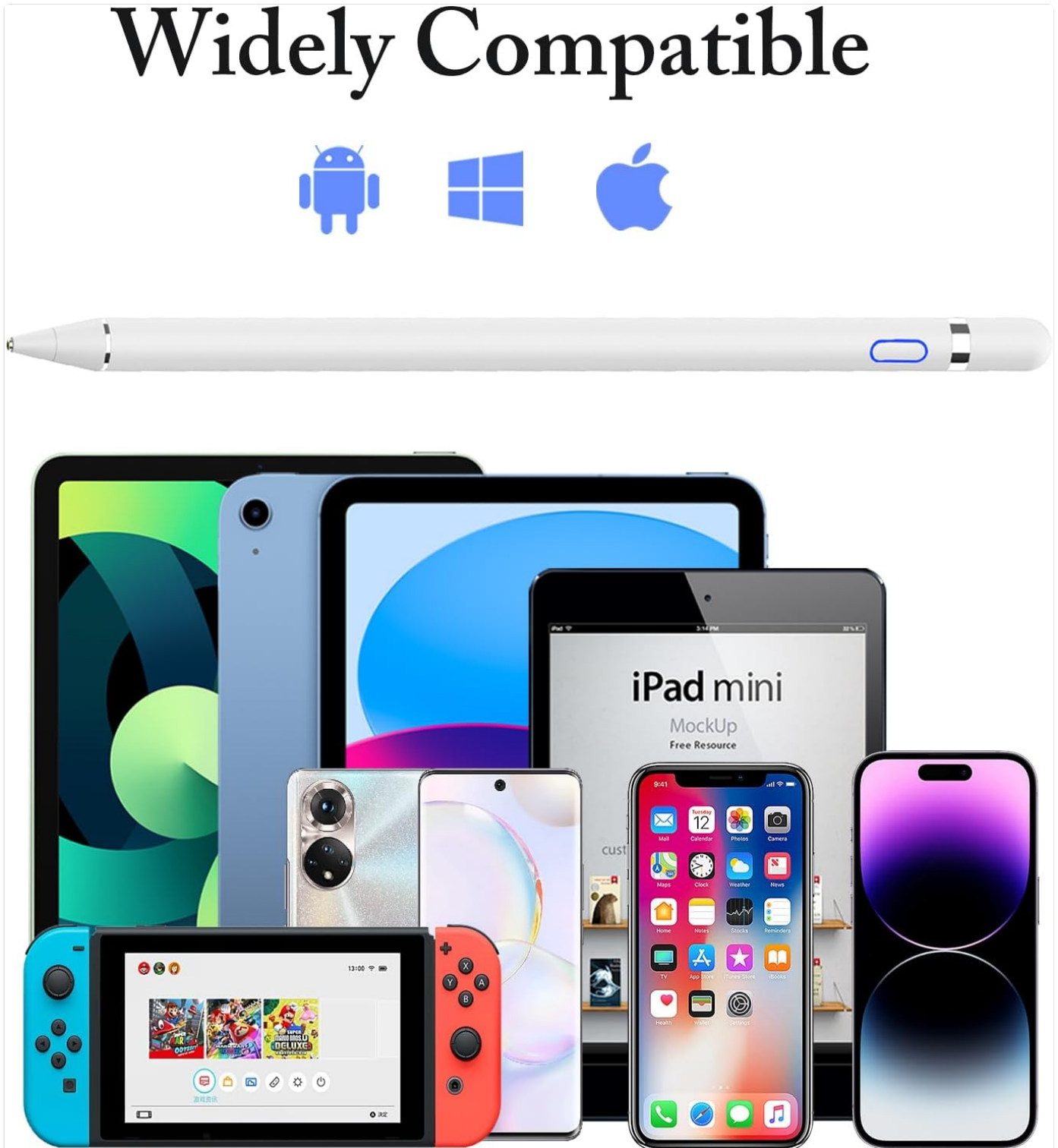
### 5.1 Compatible Devices

- Apple iPads (iPad / iPad 2 / new iPad 3 / iPad 4 / iPad Pro / iPad Mini / iPad Mini 2 / iPad Mini 3 / iPad Mini 4)
- Apple iPhones
- Android Smartphones and Tablets

- Most other popular touchscreen tablets and smartphones.

## 5.2 Incompatible Devices & Notes

- This stylus is **not Bluetooth enabled** and does **not support "Palm Rejection"**.
- Not compatible with laptops, Nintendo consoles, Huawei Mediapad series, Zenfone, Xperia Windows systems.
- Not compatible with Samsung phones and tablets that use their own S-Pen.
- The strength of compatibility may be affected by your device's screen thickness, signal transmission, and other factors.




*Image: The DOGAIN stylus displayed alongside a range of compatible devices, illustrating its wide compatibility.*

## 6. IMPORTANT NOTES & WARNINGS

- **No Bluetooth:** This stylus does not use Bluetooth. If your device was previously connected to an Apple Pencil or similar Bluetooth stylus, ensure you "forget" that device and turn off Bluetooth on your device to prevent interference.
- **Charging:** Do not use the stylus while it is charging, as this can affect performance and battery life. Unplug the charging cable once the indicator light turns green (fully charged) to prevent overcharging.
- **Tip Care:** The stylus tip is not replaceable. Handle with care to avoid collisions that could damage the tip or the pen.
- **Water Resistance:** The stylus is NOT waterproof. If it accidentally gets wet, dry it immediately to prevent circuit damage.

## ! Please Note

1. This stylus for touchscreen is **Not Bluetooth** enabled and does **Not support "Palm Rejection"**.
2. This iPad stylus does **not require a Bluetooth** connection, **just press the button to turn it on to use it**.
3. If your phone or tablet has ever been used via Bluetooth connection with the Original Pencil via Bluetooth connection, resulting in any other stylus not working with the touchscreen, **FORGET about the Pencil on Bluetooth and TURN OFF Bluetooth**.
4. **The strength of compatibility is affected by the thickness of your device's screen, the signal it transmits, and other factors.**
5. **Do Not Use the stylus while Charging**, as it can cause poor handwriting and damage the battery life of the stylus.
6. **The touch pen is an integrated touch pen**, and the tip cannot be replaced. When using, be careful to avoid collisions between the tip of the touch pen and the pen.
7. **The charging time should not be too long**, and the charging cable should be unplugged as soon as the green light of the stylus is on to avoid charging overload.
8. **The Stylus is NOT Waterproof**. If it accidentally gets drenching, dry it as soon as possible to avoid water penetration and breaking the circuit.



*Image: A visual representation of important usage notes and warnings for the stylus.*

## 7. TROUBLESHOOTING

- **Stylus not writing on iPad:**
  - Go to your iPad's Settings > Apple Pencil.
  - Turn off the option "Only Draw with Apple Pencil".
  - If using specific writing software, select the "finger" option for input if available.
- **Inconsistent performance:** Ensure your device's screen is clean and free from debris. The stylus's performance can be affected by screen protectors or the thickness of your device's screen.
- **Stylus not turning on:** Ensure the stylus is fully charged. Refer to the "Initial Charging" section.

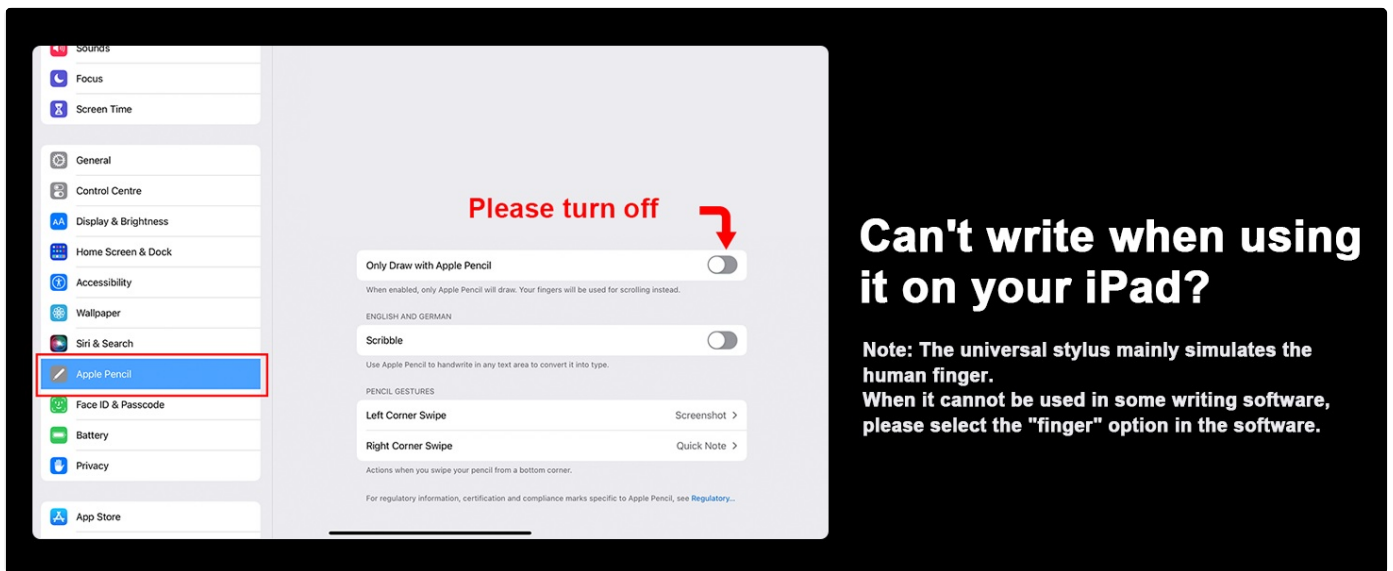


Image: Screenshot of iPad settings, indicating where to disable "Only Draw with Apple Pencil" for stylus compatibility.

## 8. SPECIFICATIONS

Brand	DOGAIN
Model Number	KZ-02
Color	White
Material	Aluminum
Tip Size	1.5mm
Item Weight	17 Grams
Dimensions (L x W x H)	7.01 x 0.35 x 7.01 inches
Battery Type	1 Lithium Polymer battery (included)
Charging Time	Approx. 60 minutes
Active Use Time	Approx. 8 hours
Charging Input	5V (Micro USB)

## 9. WARRANTY AND SUPPORT

For warranty information or technical support, please refer to the product packaging or contact DOGAIN customer service through the retailer where you purchased the product. Keep your purchase receipt for warranty claims.