

Surker RFC-508

Surker Professional Hair Clipper and Trimmer User Manual

Model: RFC-508

1. IMPORTANT SAFETY WARNINGS

To ensure safe operation and prevent injury, please read and adhere to the following safety guidelines:

- Do not use on infants or young children.
- Keep away from water sources. Do not immerse the clipper completely in water.
- Use with caution to avoid skin and eye injuries.
- Follow all recommended cleaning and maintenance instructions.
- Store out of reach of children and pets.
- Do not use while bathing or showering.
- Observe all electrical safety precautions.

2. PRODUCT OVERVIEW

The Surker RFC-508 Professional Hair Clipper is designed for precise and efficient hair and beard trimming. It features advanced technology for consistent performance and user convenience.

Key Features:

- **Ceramic Titanium Alloy Blades:** High-quality blades for effective, precise, and smooth cutting, designed to prevent skin irritation.
- **Adjustable Cutting Lengths:** Five precision length settings (0.8mm, 1.1mm, 1.4mm, 1.7mm, 2.0mm) directly on the blade.
- **Guide Combs:** Four attachment combs (3mm, 6mm, 9mm, 12mm) for a variety of hairstyles and lengths.
- **High-Capacity Battery:** Provides approximately 60 minutes of cordless operation after a 1.5-hour

charge. Ideal for travel.

- **Waterproof Blade:** Detachable blade for easy cleaning under running water.
- **LCD Display:** Shows battery capacity percentage and a washing symbol for maintenance reminders.
- **Powerful Motor:** High-speed motor (5600 rpm) ensures consistent cutting force and precision.

Package Contents:

- 1x Hair Clipper with integrated battery
- 4x Comb attachments (3mm, 6mm, 9mm, 12mm)
- 1x Cleaning brush
- 1x Maintenance oil
- 1x Charger
- 1x Extra battery
- 1x User Manual

3. SETUP

3.1 Charging the Clipper

Before first use, fully charge the hair clipper. Connect the charger to the clipper and plug it into a suitable power outlet (230-240V, 50Hz). The LCD display will indicate the charging progress. A full charge typically takes 1.5 hours.

3.2 Attaching Guide Combs

To achieve desired hair lengths, select one of the four guide combs (3mm, 6mm, 9mm, 12mm). Align the comb with the clipper head and push it firmly until it clicks into place. Ensure it is securely attached before use.

Four guide combs

Put on the preferred guide comb to achieve the satisfactory shape or length of the hair,
(Guide comb specifications are as follows:3mm 6mm 9mm 12mm)



Image: The Surker hair clipper with its four guide combs. The image demonstrates how to attach and use the guide combs for different hair lengths.

4. OPERATING INSTRUCTIONS

4.1 Power On/Off

Press the power button to turn the clipper on. Press it again to turn the clipper off.

4.2 Adjusting Cutting Length

You can adjust the cutting length in two ways:

- **Blade Adjustment:** Rotate the control ring on the clipper body to select one of the five precision length settings (0.8mm, 1.1mm, 1.4mm, 1.7mm, 2.0mm).
- **Guide Combs:** For longer lengths, attach one of the four guide combs (3mm, 6mm, 9mm, 12mm) as described in Section 3.2.

Five-length adjustment

Turn the button in the middle of the machine around to adjust the distance between the fixed cutting blade and the head, and with this fine tuning button and 4 guide combs, you can even make more different hair styles

(Five-length adjustment 0.8mm 1.1mm 1.4mm 1.7mm 2.0mm suitable for all hair)



Unique design

Guide comb with curved design help prevent scratch the skin

Image: Detail of the clipper's length adjustment dial and a guide comb, highlighting the unique curved design for skin protection.

4.3 Hair Cutting Technique

Gently pass the clipper over the hair to be cut. For best results, move the clipper against the direction of hair growth. Use smooth, even strokes. For detailed work around ears or neckline, remove the guide comb and use the adjustable blade settings.

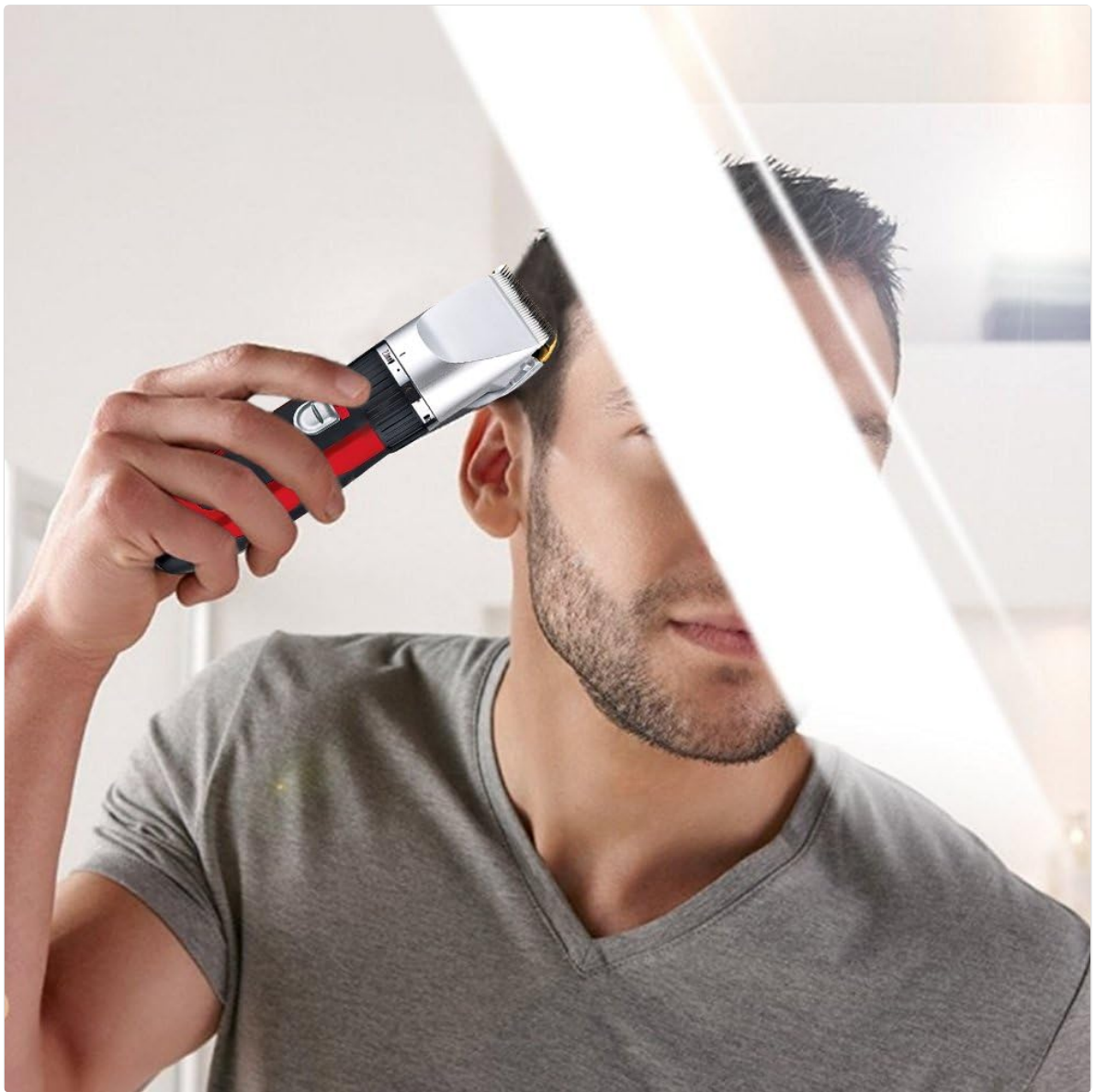


Image: A person demonstrating the use of the Surker hair clipper for a haircut.

5. MAINTENANCE

5.1 Cleaning After Each Use

Regular cleaning ensures optimal performance and longevity of your clipper.

1. Turn off the clipper.
2. Remove the guide comb, if attached.
3. Detach the cutting head by gently pushing it forward or following the specific release mechanism.
4. Rinse the detachable cutting head under running water to remove hair clippings.
5. Use the provided cleaning brush to remove any remaining hair from the clipper body and blade area.
6. Allow the cutting head to air dry completely before reattaching it to the clipper body.

5.2 Oiling the Blades

After cleaning and drying, apply a small drop of the provided maintenance oil to the blades. Turn on the clipper for a few seconds to distribute the oil evenly. This helps maintain blade sharpness and smooth operation.



Detachable battery
(Two battery in the package)



Rechargeable



Sharp but safe



Powerful motor

Image: Visual representation of the clipper's detachable battery, charging capability, and blade features.

6. TROUBLESHOOTING

If you encounter issues with your Surker Hair Clipper, refer to the following common problems and solutions:

Problem	Possible Cause	Solution
Clipper does not turn on.	Battery is discharged.	Charge the clipper for 1.5 hours.
Clipper pulls hair or cuts poorly.	Blades are dirty or not oiled.	Clean the blades thoroughly and apply maintenance oil.
Clipper makes unusual noise.	Blades are not properly aligned or need oiling.	Ensure blades are correctly attached. Clean and oil the blades.

Problem	Possible Cause	Solution
Battery life is shorter than expected.	Battery not fully charged or aging.	Ensure full charge. Consider replacing the battery if it's old (an extra battery is included).

If the problem persists after attempting these solutions, please contact customer support.

7. SPECIFICATIONS

Model Name:	RFC-508
Brand:	Surker
Blade Material:	Ceramic Titanium Alloy
Motor Speed:	5600 rpm
Battery Rated Voltage:	2.4 V
Charger Power:	3 W
Charger Output:	1000 mA
Charger Input:	230-240 V ~ 50 Hz
Special Feature:	Waterproof blade
Power Source:	Corded Electric (Rechargeable)
Dimensions (Package):	30.5 x 24.7 x 6.9 cm
Weight (Package):	620 grams

8. WARRANTY AND SUPPORT

For warranty information or technical support, please refer to the product packaging or contact the retailer where the product was purchased. Keep your proof of purchase for any warranty claims.

