

ScopeAround MS450

ScopeAround MS450 Digital Otoscope Ear Camera

USER MANUAL

1. Introduction

The ScopeAround MS450 Digital Otoscope Ear Camera is designed to provide a clear and detailed view of the ear canal and eardrum. This device features a 4.5-inch IPS screen, a high-definition camera with adjustable LED lights, and an intelligent gyroscope for image stabilization. It is intended for personal ear inspection and can assist in monitoring ear health. This manual provides essential information for the safe and effective use of your otoscope.

2. Safety Information

- **Do not insert the otoscope too deeply into the ear canal.** Excessive insertion can cause injury to the eardrum or inner ear structures.
- Always use the provided ear specula to prevent over-insertion and protect the ear canal.
- Clean the camera lens and ear specula thoroughly before and after each use with alcohol wipes to prevent infection.
- This device is for observation and minor earwax removal only. For significant earwax impaction or ear infections, consult a medical professional.
- Keep the device out of reach of children. Adult supervision is required if used on children.
- Avoid using the device if you experience pain, discomfort, or bleeding during examination. Seek medical attention immediately.
- Do not attempt to disassemble or modify the device. This may void the warranty and pose safety risks.

3. Package Contents

Verify that all items are present in the package:

- MS450 Otoscope Camera Unit
- Charging Cable (USB Type-C)
- User Manual
- 4 x Silicone Ear Spoons (various types)
- 3 x Ear Specula (protective cones)

- 1 Pack of Alcohol Prep Pads
- 32GB MicroSD Memory Card (pre-installed or included separately)



Image: The complete package contents of the ScopeAround MS450 Digital Otoscope Ear Camera, showing the main unit, camera probe, various ear cleaning tools, charging cable, and user manual.

4. Product Overview

The MS450 otoscope consists of a main display unit and a connected camera probe. Familiarize yourself with the components and controls:

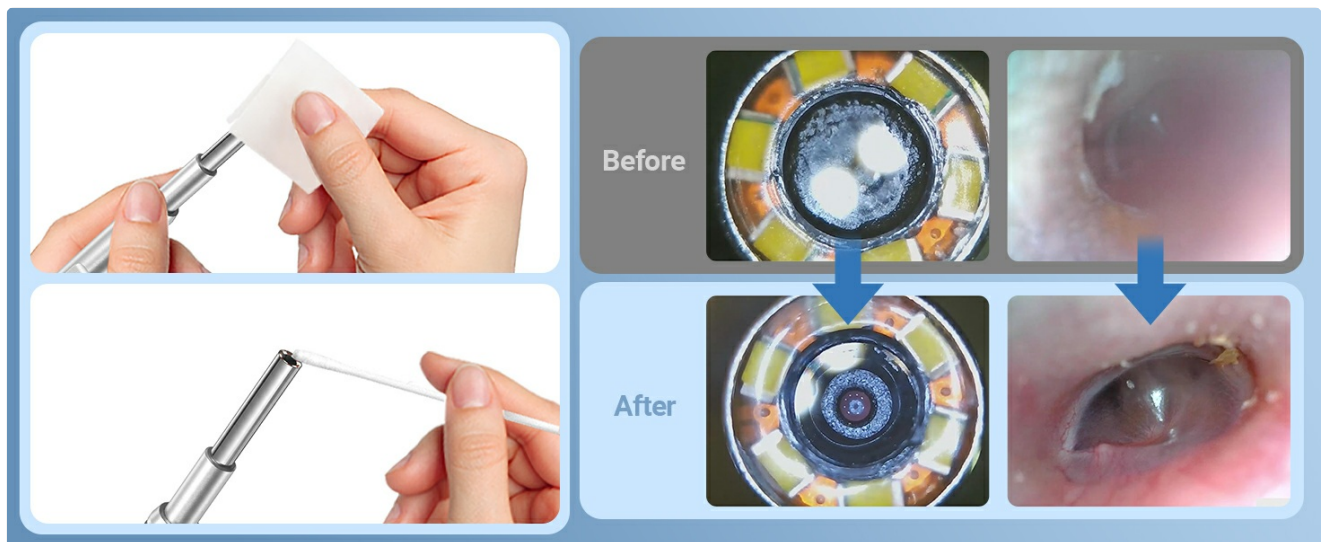


Image: A detailed diagram illustrating the various parts and control buttons of the ScopeAround MS450 Digital Otoscope, including the charging port, TF card slot, speaker, reset button, stand, microphone, camera probe connector, light control, photo/video button, mode switch, up/down keys, OK button, power button, and settings button.

- **Display Unit:** Features a 4.5-inch IPS screen for real-time viewing.
- **Camera Probe:** Equipped with an HD camera, 6 adjustable LED lights, and a gyroscope.
- **Control Buttons:** Power, Photo/Video, Light Control, Mode Switch, Navigation (Up/Down), OK, and Settings.
- **Ports:** USB Type-C Charging Port, TF Card Slot, Camera Probe Connector.
- **Integrated Stand:** Allows for hands-free operation.

5. Setup

1. **Charge the Device:** Before first use, fully charge the otoscope using the provided USB Type-C cable and a compatible power adapter (not included). The charging port is located on the side of the display unit. A full charge provides over 4 hours of continuous use.
2. **Insert MicroSD Card:** Ensure the 32GB MicroSD card is properly inserted into the TF Card Slot. This card is used to store photos and videos.
3. **Attach Camera Probe:** Connect the camera probe cable securely to the Camera Probe Connector on the display unit.
4. **Select and Attach Specula/Ear Spoon:** Choose an appropriate ear speculum (protective cone) or silicone ear spoon. Gently push it onto the tip of the camera probe until it is secure. Always use a speculum to protect the ear canal.



Image: The USB Type-C charging port located on the side of the ScopeAround MS450 display unit, used for recharging the internal battery.



Image: Illustration of attaching a protective ear speculum to the otoscope camera probe, highlighting its role in preventing injury during use.

6. Operating Instructions

1. **Power On:** Press and hold the Power Button (blue button) for a few seconds until the screen turns on.
2. **Adjust LED Brightness:** Use the Light Control Button (sun icon) to cycle through 3 levels of LED brightness to achieve optimal illumination for your ear canal.
3. **Positioning:** Gently insert the camera probe into the ear canal. The 4.5-inch IPS screen will display a real-time view. The intelligent directional gyroscope helps stabilize the image, preventing disorientation.
4. **Hands-Free Operation:** Utilize the integrated stand on the back of the display unit to position the device on a flat surface, allowing for hands-free viewing and easier manipulation of the probe.
5. **Capture Photos/Videos:**
 - Press the Mode Switch Button (M) to switch between photo and video modes.
 - In photo mode, press the Photo/Video Button (camera icon) once to take a picture.
 - In video mode, press the Photo/Video Button once to start recording, and press again to stop.
6. **Review Media:** Use the navigation buttons (Up/Down) to browse captured photos and videos. Press the OK button to view a selected item.
7. **Transfer Data:** Connect the device to a computer using the USB Type-C cable to transfer photos and videos from the MicroSD card. Alternatively, remove the MicroSD card and insert it into a card reader.
8. **Power Off:** Press and hold the Power Button until the screen turns off.

STABLE ORIENTATION & SMOOTH IMAGES

Intelligent directional gyroscope
for image stabilization



60°



120°



180°

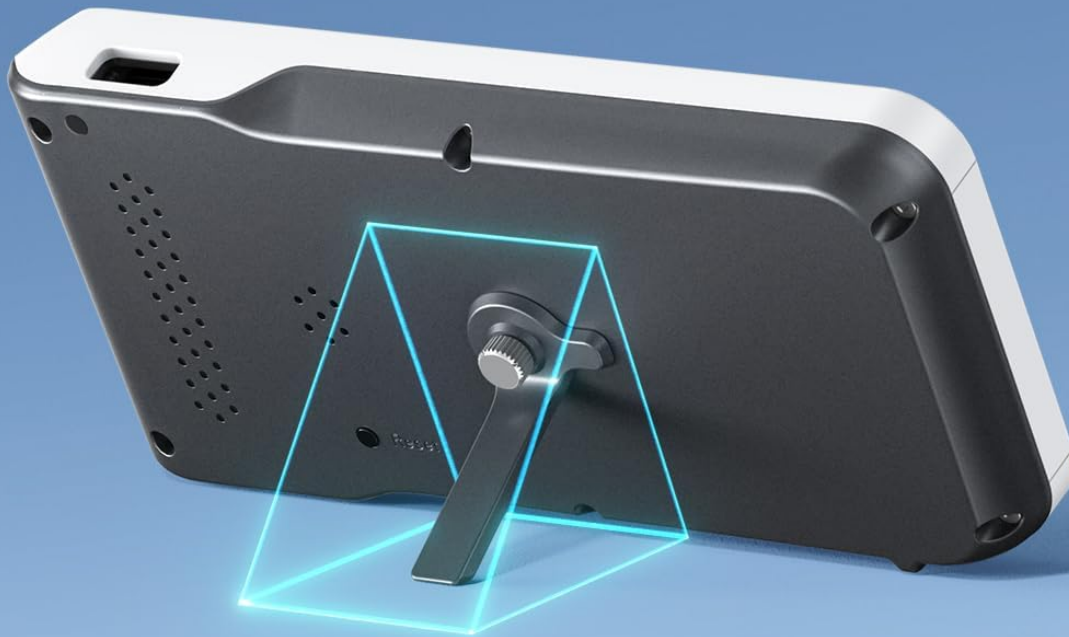


360°

Image: A user examining their ear with the ScopeAround MS450, highlighting the stable image orientation provided by the intelligent gyroscope for clear viewing.

STABLE STAND DESIGN

Stand on by itself free your hands



Camera Probe Port

Image: The ScopeAround MS450 display unit with its stable stand design, allowing for hands-free operation during ear inspection.

7. Maintenance

- **Cleaning the Camera Lens:** After each use, gently wipe the camera lens with an alcohol prep pad or a soft, dry cloth. Ensure no residue remains.
- **Cleaning Ear Spoons/Specula:** Wash reusable ear spoons and specula with soap and water, then sterilize with alcohol prep pads. Replace disposable specula after each use.
- **Device Cleaning:** Wipe the main unit with a soft, dry cloth. Do not immerse the main unit in water. The

camera probe is waterproof and can be cleaned with water and alcohol.

- **Storage:** Store the otoscope in a clean, dry place at room temperature, away from direct sunlight and extreme temperatures.
- **Battery Care:** To prolong battery life, avoid fully discharging the device frequently. Charge it regularly, even if not in use for extended periods.



Image: Instructions for cleaning the otoscope probe, demonstrating the use of a soft wipe for the exterior and a cotton swab for the lens area.

8. Troubleshooting

Problem	Possible Cause	Solution
Device does not power on.	Low battery; device frozen.	Charge the device fully. If unresponsive, press the Reset button with a pin.
No image on screen.	Camera probe not connected; faulty probe.	Ensure camera probe is securely connected. If problem persists, contact support.
Image is blurry.	Dirty lens; incorrect focal distance.	Clean the camera lens. Ensure the probe is within the optimal focal distance (approx. 1 inch / 2.5 cm).
Cannot take photos/videos.	MicroSD card full or not inserted; incorrect mode.	Check MicroSD card status and ensure it is inserted. Verify device is in photo or video mode.
LED lights not working.	Lights turned off or set to lowest brightness.	Press the Light Control Button to adjust brightness levels.

9. Specifications

- **Model:** MS450
- **Display:** 4.5-inch IPS Screen
- **Camera Resolution:** Full HD (1080P for images, 720P for video)
- **Light Source:** 6 adjustable LED lights (3 brightness levels)
- **Battery:** 2500mAh Lithium Polymer (rechargeable)
- **Battery Life:** Approximately 4 hours of continuous use
- **Storage:** 32GB MicroSD Card (included)
- **Focal Length:** Approximately 1 inch (2.5 cm)
- **Gyroscope:** Intelligent directional gyroscope for image stabilization
- **Connectivity:** USB Type-C for charging and data transfer
- **Product Dimensions:** 5.9 x 2.9 x 0.79 inches
- **Item Weight:** 12 ounces
- **Material:** Glass (lens), other components as specified by manufacturer

10. Warranty

ScopeAround products are covered by a limited manufacturer's warranty against defects in materials and workmanship. Please refer to the warranty card included in your package or visit the official ScopeAround website for detailed warranty terms and conditions. Keep your proof of purchase for warranty claims.

11. Support

For technical assistance, troubleshooting, or product inquiries, please contact ScopeAround customer support:

- **Website:** Visit the official ScopeAround website for FAQs and support resources.
- **Email:** Refer to your product packaging or the official website for customer service email.
- **Phone:** Refer to your product packaging or the official website for customer service phone number.


Our US-based after-sales support team is available to assist you.

Related Documents - MS450

ScopeAround

User Manual

WiFi Otoscope Camera



<https://scopearound.com/>

General Information

This operation manual allows you to work safely with the otoscope camera. Please keep this manual for your information. Liability is void for any damage caused by not following this manual.

Maintenance

To clean this device, use a damp cloth or mild, water-based cleanser. Fully charge the battery before you leave this device idle for long time to prevent damage to the battery.

Storage and transport

Intercept transport can harm the device. Always transport this device in the provided box in order to prevent damage.

Information on disposal

Electronic equipment does not belong into domestic waste, but must be disposed in accordance with the applicable statutory provisions.

Description

This otoscope camera is a portable, handheld video camera with clear lens light, it's compatible with iPhone, iPad, Android devices and Tablet. The high resolution camera provides great video quality. There are 6 LED lights on the tip of the camera which makes the light path and possess the visual field of view.

Safety

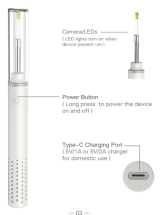
Select a speculum, then put it onto the head of the camera. Please attach a speculum to prevent the probe from hurting when you use this otoscope to check your ear.

Clean the surface of the device with 75% alcohol solution before contacting with the skin. Disinfect the adapters with saturated steam for 10 minutes at 273°F.

The appliance is not intended for use by persons with limited physical, sensory or mental capabilities.

Keep bystanders, children away while operating the tool.

Product Description




Operation procedure

Search for "WiFi Fun APP" Store or Google Play Store, download and install the app. Or Scan QR code Download APP.


Select the speculum or ear-pick to install as needed.

Long press the power button to turn on the device.

Indicate light turn on when power on.

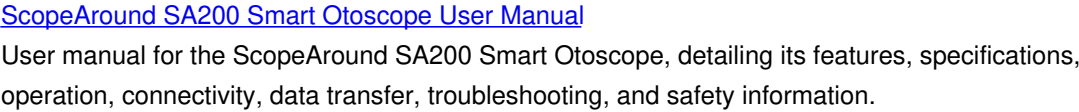
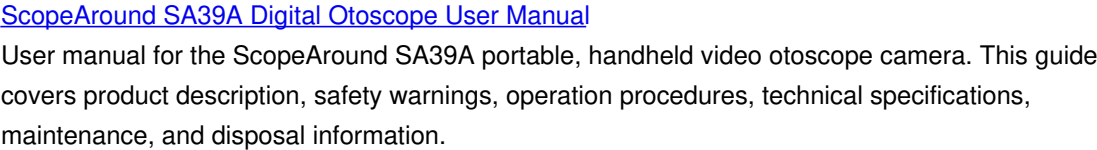


Enter the wifi setting menu of the phone to find and connect with the wifi named Smart Chrome.



[ScopeAround WiFi Otoscope Camera User Manual](#)

User manual for the ScopeAround WiFi Otoscope Camera, detailing its features, operation, safety





[ANYKIT MS450-NTE User Manual: HD Digital Oscilloscope with 4.5-inch Screen](#)

Comprehensive user manual for the ANYKIT MS450-NTE HD digital oscilloscope. This guide covers product features, safety precautions, battery information, operational instructions, language settings, file transfer, detailed specifications, and after-sales support for the 4.5-inch screen oscilloscope.