

BroadLink RM4 pro

BroadLink RM4 Pro Universal IR and RF WiFi Smart Remote Instruction Manual

Model: RM4 Pro

Brand: BroadLink

1. INTRODUCTION

The BroadLink RM4 Pro is a universal remote control designed to integrate and manage various infrared (IR) and radio frequency (RF) controlled devices within your home. It enables smart control of appliances such as TVs, air conditioners, set-top boxes, curtain motors, and fans through a single application on your smartphone or via voice commands with compatible smart assistants.

This manual provides detailed instructions for setting up, operating, and maintaining your BroadLink RM4 Pro to ensure optimal performance and a seamless smart home experience.

2. KEY FEATURES

- **High Compatibility:** Supports over 50,000 IR-controlled devices (TVs, ACs, set-top boxes, etc.) and RF 433 MHz devices (curtain motors, projectors, light switches). Note: RF devices must use a fixed code, not variable.
- **Remote Control:** Manage your IR/RF appliances from anywhere using the BroadLink app on your smartphone.
- **Voice Control:** Compatible with Amazon Alexa, Google Assistant, and Siri (via phone) for hands-free control of your devices.
- **Scheduling and Scenes:** Create custom timers and scenes to automate device operations based on your daily routine.
- **Manual Learning Function:** Ability to learn codes from original remote controls for unsupported devices.
- **Cloud IR Code Database:** Continuously updated online database ensures compatibility with new models.
- **Wi-Fi Connectivity:** Connects to secure 2.4 GHz Wi-Fi networks.

3. SETUP GUIDE

Follow these steps to set up your BroadLink RM4 Pro device:

3.1. Package Contents

- BroadLink RM4 Pro Universal Remote
- USB Power Cable
- User Manual

3.2. Physical Placement

Place the RM4 Pro in a central location within the room where you intend to control devices. Ensure it has a clear line of sight to IR-controlled devices. For RF devices, line of sight is not strictly required, but avoid placing it behind large metal objects that could interfere with the signal.

3.3. Powering On

1. Connect the provided USB power cable to the RM4 Pro.
2. Plug the other end of the USB cable into a standard USB power adapter (not included) and then into a power outlet.
3. The indicator light on the device will start blinking, indicating it is ready for setup.

3.4. App Installation and Device Pairing (Three-Step Simple Setup)

The setup process involves three main steps:

1. **Download the BroadLink App:** Search for "BroadLink" in the App Store (iOS) or Google Play Store (Android) and install the application.
2. **Add Device:** Open the BroadLink app, create an account or log in. Follow the in-app instructions to add a new device. Ensure your smartphone is connected to a 2.4 GHz Wi-Fi network. The app will guide you through connecting the RM4 Pro to your home Wi-Fi network.
3. **Match Remote Panel:** Once the RM4 Pro is connected to Wi-Fi, you can start adding your IR and RF appliances. The app provides a database of devices for quick setup or allows for manual learning from your existing remote controls.

Three-Step Simple Setup

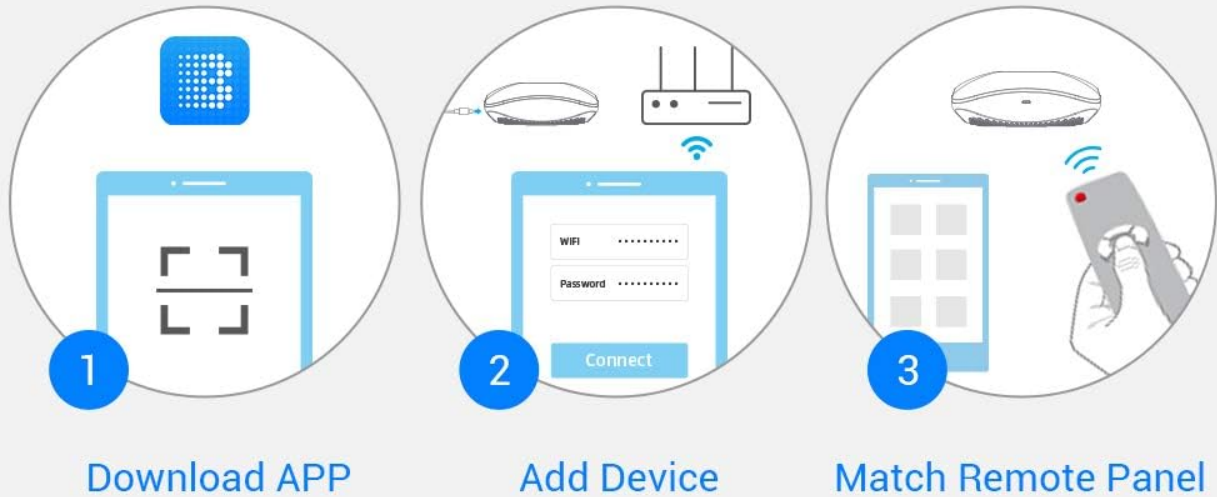


Image: Visual representation of the three-step setup process: 1. Download App, 2. Add Device, 3. Match Remote Panel.

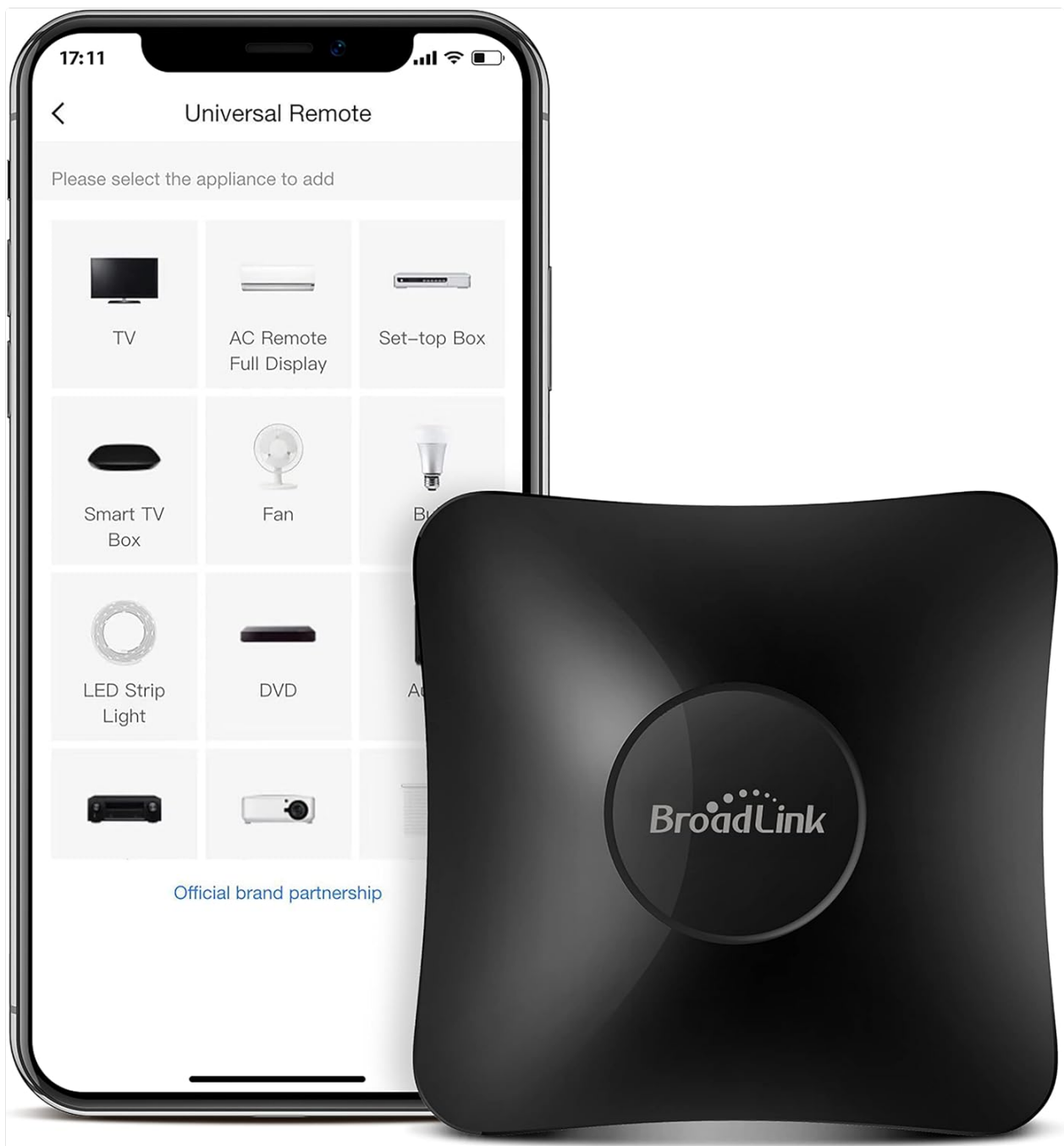


Image: The BroadLink RM4 Pro device next to a smartphone displaying the "Universal Remote" interface within the BroadLink app, showing options to add various appliances like TV, AC, Set-top Box, Smart TV Box, Fan, LED Strip Light, DVD, and Projector.

4. OPERATING INSTRUCTIONS

4.1. Adding and Controlling Devices

The RM4 Pro supports both IR and RF appliances. The BroadLink app provides a comprehensive interface for managing these devices.

IR And RF Appliance, Full Integration

such as TVs, set-top boxes, and RF curtain



Image: A diagram illustrating the full integration of IR and RF appliances with the BroadLink RM4 Pro. It shows the central RM4 Pro device connected to a smartphone app, with arrows pointing to various IR devices (TV, STB, Air conditioner, Audio equipment, LED strip light, DVD player) and RF devices (Electric curtain, Electric roller blind, RF light switch, RF fan, RF light) with their respective frequencies (RF433MHz, RF315MHz).

- **IR Devices:** For devices like TVs, air conditioners, and set-top boxes, the app will guide you to select the brand and model. If your device is not listed, use the manual learning function.
- **RF Devices:** For RF devices such as curtain motors or RF light switches, ensure they operate on a fixed 433 MHz frequency. The app will prompt you to learn the RF signal from your original remote.

4.2. Manual Learning Function

If an appliance is not found in the BroadLink cloud database, you can teach the RM4 Pro commands from its original remote control.

1. In the BroadLink app, select the option to manually learn a new remote or button.
2. Point your original remote control towards the RM4 Pro and press the desired button.
3. The RM4 Pro will capture the signal, and you can then assign it a function within the app.

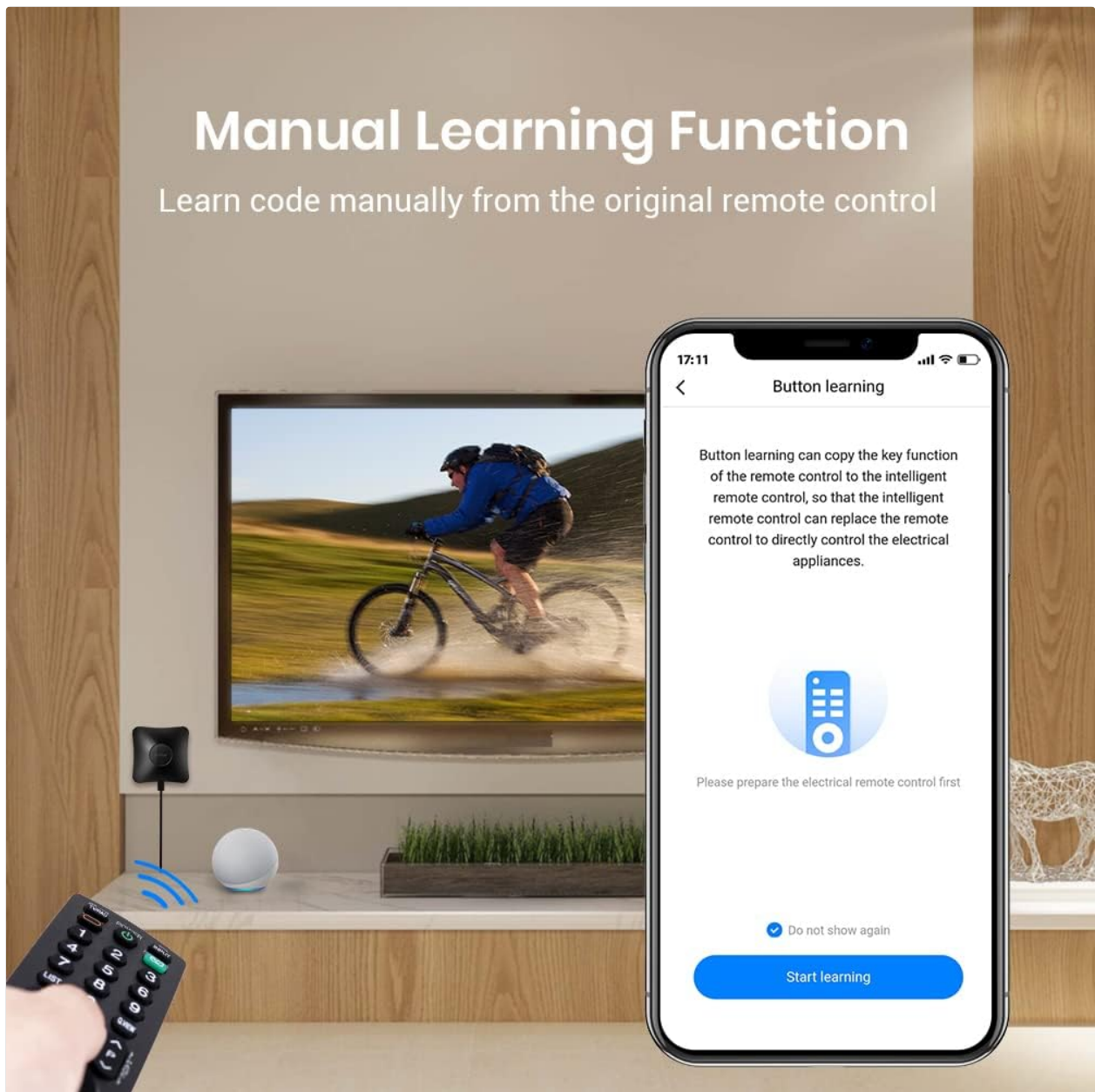


Image: A user is shown using the manual learning function. An original remote control is pointed towards the BroadLink RM4 Pro, which is connected to a smartphone displaying the "Button learning" interface in the app. The app explains that button learning can copy key functions from the original remote to the intelligent remote control.

4.3. Voice Control Integration

The RM4 Pro integrates with popular voice assistants for convenient control.

- **Alexa/Google Assistant:** Link your BroadLink account within the Alexa or Google Home app. Once linked, you can use voice commands like "Alexa, turn on the TV" or "Hey Google, set the AC to 22 degrees."
- **Siri:** Siri voice control is available through shortcuts on your iPhone.

Voice Control

Works with Alexa and Google Assistant to add voice control to your IR appliances



Image: A person is shown in a living room setting, using voice control with an Amazon Echo device. The text bubble indicates a command: "Alexa, volume up on TV". The BroadLink RM4 Pro is visible, along with logos for Google Assistant and Alexa, signifying compatibility.

4.4. Scheduling and Scene Creation

Automate your devices by setting schedules and creating custom scenes.

- **Timers:** Set specific times for devices to turn on or off. For example, "Turn on TV to ESPN at 2:00 PM."
- **Scenes:** Combine multiple actions into a single command. A "Good Morning" scene could turn on lights, open curtains, and start the coffee machine.
- **IFTTT Integration:** Use IFTTT (If This Then That) to create advanced automations and link the RM4 Pro with other smart home services.

Schedule Control

Schedule a time and no more missing

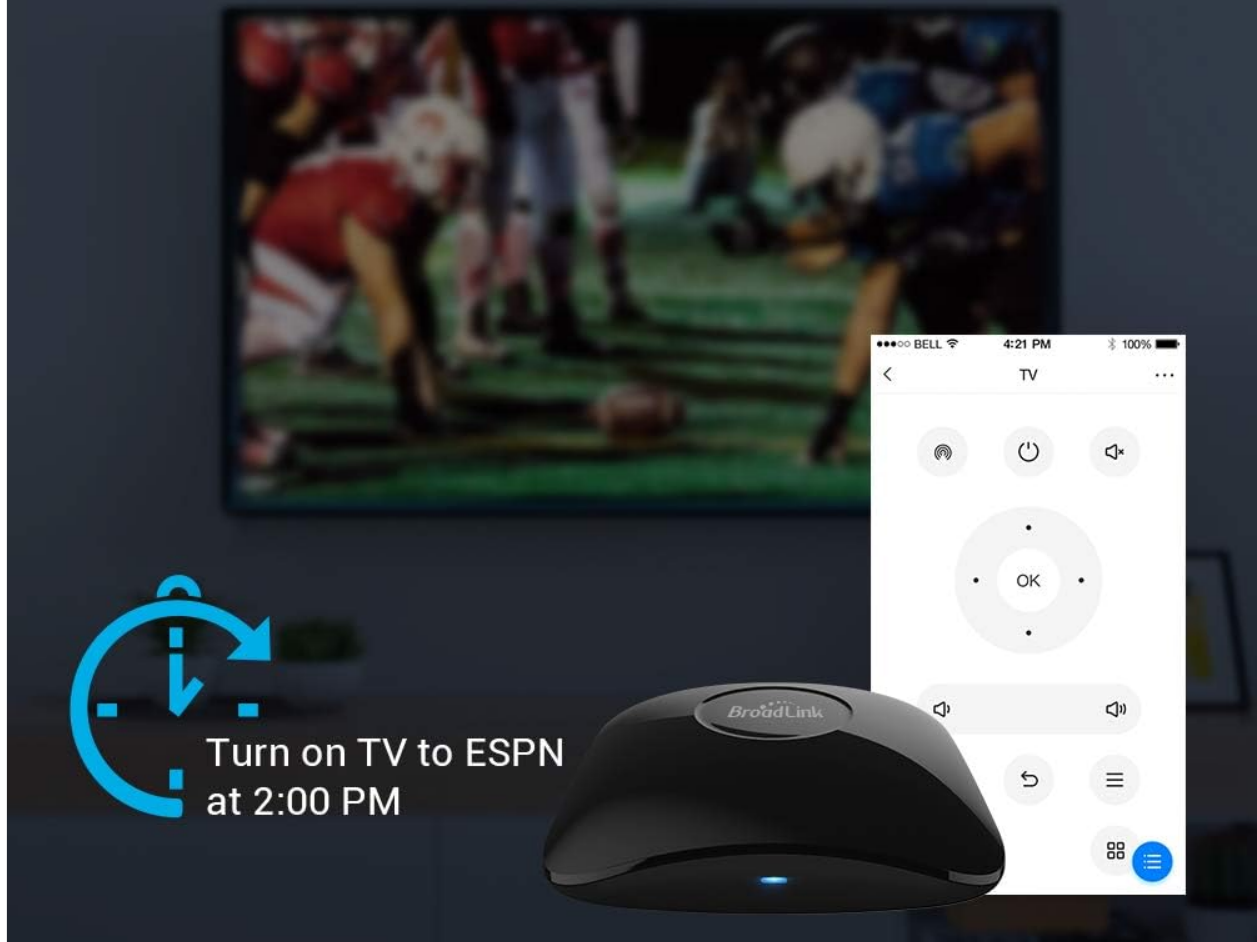


Image: An illustration demonstrating the schedule control feature. The BroadLink RM4 Pro is shown with a clock icon and the text "Turn on TV to ESPN at 2:00 PM", indicating timed automation. A smartphone app displays a TV remote interface.



Image: A person is shown using the BroadLink app on a smartphone to remotely control an air conditioner, with arrows

indicating the signal flow from the phone to the BroadLink device and then to the AC unit.

5. MAINTENANCE

To ensure the longevity and optimal performance of your BroadLink RM4 Pro, follow these simple maintenance guidelines:

- **Cleaning:** Wipe the device with a soft, dry cloth. Do not use liquid cleaners or abrasive materials.
- **Placement:** Keep the device away from direct sunlight, high temperatures, and excessive humidity. Ensure it is placed on a stable surface.
- **Firmware Updates:** Regularly check the BroadLink app for firmware updates to ensure your device has the latest features and security enhancements.

6. TROUBLESHOOTING

If you encounter issues with your BroadLink RM4 Pro, refer to the following common problems and solutions:

Problem	Possible Cause / Solution
Device not connecting to Wi-Fi	<ul style="list-style-type: none">• Ensure your Wi-Fi network is 2.4 GHz. The RM4 Pro does not support 5 GHz networks.• Verify the Wi-Fi password is correct.• Move the RM4 Pro closer to your Wi-Fi router.• Restart your router and the RM4 Pro.
IR device not responding	<ul style="list-style-type: none">• Ensure the RM4 Pro has a clear line of sight to the IR device.• Verify the correct remote profile is selected in the app.• Try using the manual learning function to re-learn the IR commands.
RF device not responding	<ul style="list-style-type: none">• Confirm the RF device operates on a fixed 433 MHz frequency. Variable code RF devices are not supported.• Ensure the RF signal was learned correctly. Repeat the manual learning process if necessary.• Check for potential interference from other RF devices.
Voice control not working	<ul style="list-style-type: none">• Ensure your BroadLink account is correctly linked to Alexa or Google Assistant.• Verify the device names in the BroadLink app match those used in voice commands.• Check your internet connection.

If problems persist, please contact BroadLink customer support.

7. SPECIFICATIONS

Feature	Detail
Brand	BroadLink
Model Number	RM4 pro
Connectivity Technology	Wi-Fi (2.4 GHz only)
Special Feature	Universal IR/RF Control
Compatible Devices	TV, Home Cinema, DVD/Blu-ray Player, Set-top Box, Air Conditioner, Curtain Motor, Fan, Projector, Light Switch
Max Supported Devices	255
Max Range	65 Feet (IR range may vary with obstacles)
Item Weight	3.4 Ounces
Rechargeable Battery	No

8. WARRANTY AND SUPPORT







BroadLink offers a manufacturer's warranty for this product.

- **Manufacturer Warranty:** 2 Years
- **Technical Support:** Global 24/5 call center and email support are available. If you encounter any issues with device connection or functionality, please contact the support team.
- **Contact Information:** Refer to the BroadLink official website or the BroadLink app for the most up-to-date support contact details.

Note: Information regarding spare parts availability and guaranteed software updates is not available at this time.

9. IMPORTANT NOTES

- Some special curtain motors and ceiling fans may not be compatible. It is recommended to confirm compatibility before purchase if you have such devices.
- The device requires a secure 2.4 GHz Wi-Fi network for operation.

 Remoto Universal RM4 pro Guía de inicio rápido <small>web: www.broadlink.com e-mail: support@broadlink.com BroadLink - BroadLink, Guatemala S. de RL de CV</small>	<p>BroadLink RM4 Pro Universal Remote Quick Start Guide</p> <p>Quick start guide for the BroadLink RM4 Pro Universal Remote, detailing setup, app preparation, device addition, integrations with Google/Alexa/IFTTT, FAQs, and important notes.</p>
 <small>Manual de usuario e instrucciones de instalación BroadLink RM4 pro 2021</small>	<p>BroadLink RM4 Pro Univerzálny Diaľkový Ovládač Návod na Použitie</p> <p>Podrobný návod na použitie univerzálného diaľkového ovládača BroadLink RM4 Pro, vrátane jeho funkcií, nastavenia, technických špecifikácií a kompatibility so smart domácimi systémami ako Google Home a Amazon Alexa.</p>
	<p>BroadLink RM4 Pro Universal Remote - User Guide and Specifications</p> <p>Comprehensive guide for the BroadLink RM4 Pro Universal Remote, covering what's included, overview, indications, troubleshooting, and important notices. Learn about setup, device compatibility, and product features.</p>
	<p>BroadLink Universal Remote Quick Setup Guide</p> <p>Comprehensive guide to setting up your BroadLink Universal Remote. Learn to connect to Wi-Fi, add IR and RF appliances, and integrate with voice assistants like Amazon Alexa and Google Assistant.</p>
	<p>BroadLink RM4 TV mate Quick Setup Guide</p> <p>Step-by-step instructions for setting up the BroadLink RM4 TV mate universal remote, connecting it to your network, and integrating it with smart home services.</p>
	<p>BroadLink Quick Start Guide: Setup and Configuration</p> <p>Comprehensive guide to setting up BroadLink smart devices, covering app installation, device connection, IR/RF programming, and integration with Google Assistant and Amazon Alexa.</p>