

Torque TR9580

TORQUE Trailer Air Spring Bag User Manual

Model: TR9580

1. PRODUCT OVERVIEW

The TORQUE TR9580 Trailer Air Spring Bag is a high-quality replacement component designed for heavy-duty trailer suspension systems. It is engineered to provide reliable performance and durability, meeting or exceeding OEM specifications. This air spring bag is a direct replacement for several common models, ensuring broad compatibility.



Image 1: Front view of the TORQUE TR9580 Trailer Air Spring Bag, showing its cylindrical shape and top plate with a threaded stud.

2. IMPORTANT SAFETY INFORMATION AND COMPATIBILITY

WARNING: Selecting the correct air spring bag is critical for safe operation. Using an incorrect part can lead to system failure and serious accidents. Always verify compatibility before installation.

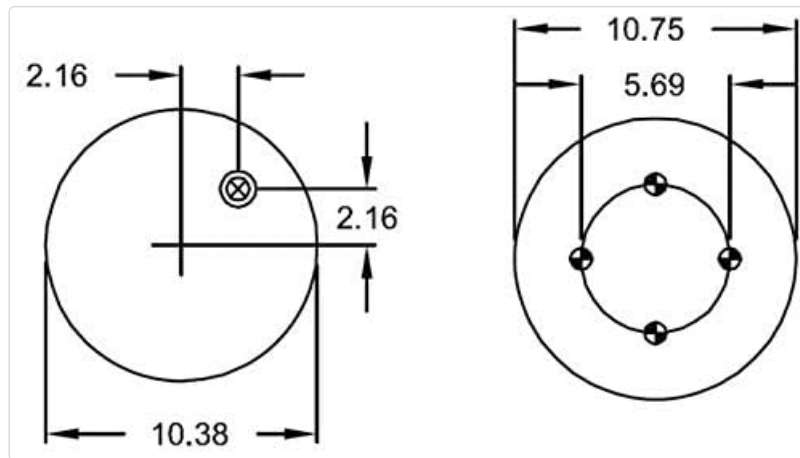


Image 2: Safety warning emphasizing the importance of verifying the correct part number with a dealer using the vehicle's VIN to prevent accidents caused by incorrect air bag installation.

2.1. Compatibility and Replacement Information

The TR9580 air spring bag is designed as a direct replacement for the following part numbers:

- **Firestone:** 9580, W01-358-9580
- **Goodyear:** 1R13-118, 1R13-144, 1R13-081
- **Triangle:** AS-8434
- **Contitech:** 1010-21P434
- **Hendrickson:** S-20127, S-20414, C-20127, C-20414
- **Automann:** 566.ER9580
- **Other Equivalents:** AS9580, HDV9580, HD9580, Sampa SP559580-K

It is highly recommended to consult your dealer and confirm the required part number for your specific vehicle or trailer application. Do not rely solely on vehicle make and model for compatibility.

3. SPECIFICATIONS AND FEATURES

3.1. Technical Specifications

- **Extended Height:** 24.20 inches
- **Compressed Height:** 7.40 inches
- **Top Plate Width:** 10.38 inches
- **Piston Width:** 10.75 inches
- **Item Weight:** Approximately 25.20 lbs (25 pounds)
- **Package Dimensions:** 16 x 10 x 10 inches

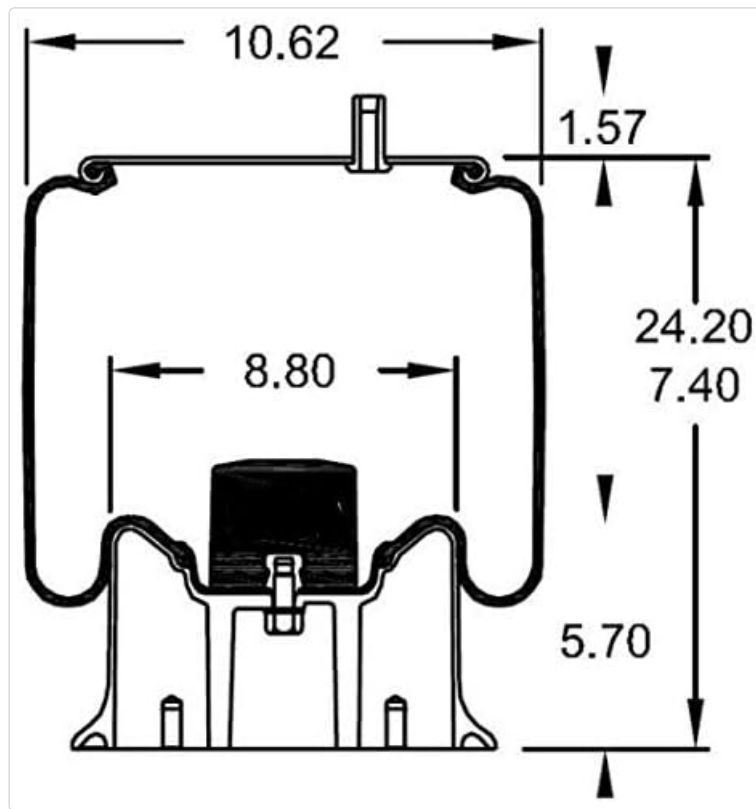


Image 3: Dimensional diagrams illustrating the extended and compressed heights, along with top plate and piston widths of the air spring bag.

3.2. Quality and Design Features

- **Rubber Thickness:** Features 4.5 - 5.00 mm thick rubber, exceeding OEM requirements.
- **Steel Studs:** Equipped with 25% stronger 4140 grade steel studs.
- **Pistons:** Incorporates stronger composite pistons for enhanced durability.
- **Leak Test:** Undergoes a rigorous leak test after final assembly to ensure integrity.
- **Part Number Engraving:** Part number is permanently engraved on the rubber for easy identification.



Image 4: Visual comparison highlighting the superior quality features of TORQUE air spring bags, including rubber thickness, stud material, burst pressure, and life cycle compared to other products.

4. INSTALLATION AND MAINTENANCE

Installation of air spring bags should be performed by qualified personnel following manufacturer guidelines and safety protocols. Refer to your vehicle's service manual for specific torque specifications and procedures.

4.1. General Installation Notes

- Ensure the vehicle is properly supported and secured before beginning any work.
- Relieve all air pressure from the existing air suspension system.
- Inspect all mounting surfaces and hardware for damage or wear. Replace as necessary.
- Connect air lines securely to prevent leaks.
- After installation, slowly inflate the air spring bag and check for proper seating and any air leaks using a soapy water solution.

4.2. Maintenance

Regular inspection of the air spring bag and surrounding components is recommended to ensure optimal performance and longevity. Check for:

- Cracks, tears, or abrasions on the rubber bellows.
- Corrosion or damage to the top plate, piston, and mounting hardware.
- Air leaks from fittings or the bag itself.
- Proper inflation pressure according to vehicle specifications.

5. TROUBLESHOOTING

If you experience issues with your air spring system, consider the following common troubleshooting steps:

- **Loss of Air Pressure:** Check all air lines and fittings for leaks. Inspect the air spring bag for punctures or tears. Verify the air compressor and leveling valve operation.
- **Uneven Ride Height:** This can indicate a leak in one air spring, a faulty leveling valve, or an issue with the air supply system.
- **Excessive Vibration or Noise:** Ensure all mounting hardware is secure. Inspect the air spring for internal damage or improper seating.

For complex issues, it is advisable to consult a professional mechanic or the vehicle manufacturer's service manual.

6. WARRANTY INFORMATION

TORQUE offers an industry-leading **3-year unlimited mile warranty** on their rolling lobe/reversible sleeve air springs, including the TR9580. To activate your warranty, please register your product through the official Torque Parts website after purchase.

For detailed warranty terms and conditions, please refer to the official Torque Parts website or contact customer support.

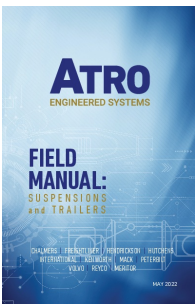
7. CUSTOMER SUPPORT

For further assistance, technical inquiries, or warranty claims, please visit the official Torque Parts website or contact their customer service department. Always have your product model number (TR9580) and purchase information ready when contacting support.

Torque Parts Official Store: [Visit Store on Amazon](#)

© 2023 Torque Parts. All rights reserved.

Related Documents - TR9580



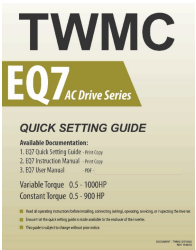
ATRO Field Manual: Truck Suspensions and Trailers

Comprehensive field manual from ATRO Engineered Systems detailing inspection, maintenance, and common failures of heavy-duty truck and trailer suspension systems, covering air, leaf, and elastomer types, torque rods, and major manufacturers.





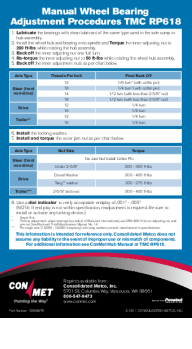
Blue Bird Vision Propane: Rear Axle and Suspension Service Manual

Comprehensive service manual detailing the maintenance, repair, and troubleshooting of the rear axle and suspension systems for the Blue Bird Vision Propane bus. Covers both leaf spring/hydraulic shock absorber and optional Hendrickson Comfort Air rear air suspension systems, including Arvin Meritor RS-21-145 axle specifications and procedures.



TWMC EQ7 AC Drive Series Quick Setting Guide

A concise guide for setting up and operating the TWMC EQ7 AC Drive Series, covering installation, wiring, operation methods, speed reference configuration, and motor parameter settings.

 <p>TCI Engineering - General Tech Info:</p> <p>General Torque Spec:</p> <p>TCI Front Suspension Alignment Spec:</p>	<p>TCI Engineering Technical Information and Product Guides</p> <p>Comprehensive technical data, color codes, torque specifications, and part compatibility for TCI Engineering suspension components, including Mustang II and All American Coil Over systems.</p>
 <p>Volvo Maintenance P80 to 960 4x4 2x2 2x4</p> <p>Contents:</p> <ul style="list-style-type: none"> Introduction General Information General Maintenance General Inspection General Adjustment General Lubrication General Troubleshooting General Safety General Notes 	<p>Volvo 7xx/9xx Front Suspension Maintenance Guide: Alignment, Bushings, Struts, and More</p> <p>Comprehensive guide to Volvo 7xx, 9xx, 740, 744T, 745T, 940, and 960 front suspension maintenance, covering wheel alignment, bushing replacement, strut installation, tie rod and ball joint service, troubleshooting, and more.</p>
 <p>Manual Wheel Bearing Adjustment Procedures TMC RP618</p> <p>Contents:</p> <ul style="list-style-type: none"> Introduction General Information General Maintenance General Inspection General Adjustment General Lubrication General Troubleshooting General Safety General Notes 	<p>Consolidated Metco Wheel Bearing Adjustment and Torque Specifications</p> <p>Detailed procedures and torque specifications for manual wheel bearing adjustment, including axle types, threads per inch, nut sizes, and torque values, from Consolidated Metco for TMC RP618.</p>