

Italeri 3951S

Italeri 3951S 1:24 Container Trailer 40 ft Model Kit Instruction Manual

Model: 3951S

1. INTRODUCTION

This instruction manual provides detailed guidance for the assembly, care, and maintenance of your Italeri 3951S 1:24 scale 40 ft Container Trailer model kit. This kit is designed for hobbyists and model enthusiasts to construct a detailed replica of a 40 ft container trailer. Please read all instructions carefully before beginning assembly.

2. SAFETY INFORMATION

- **Small Parts Warning:** This kit contains small parts which may pose a choking hazard for young children. Keep out of reach of children under 3 years of age.
- **Age Recommendation:** This model kit is recommended for individuals aged 14 years and older due to the complexity of assembly and the use of sharp tools and adhesives.
- **Adhesives and Paints:** Use model-specific adhesives and paints in a well-ventilated area. Follow the safety instructions provided by the manufacturers of these products. Avoid contact with skin and eyes.
- **Sharp Tools:** Assembly may require the use of hobby knives, clippers, and other sharp tools. Handle with care to prevent injury.

3. PACKAGE CONTENTS

The Italeri 3951S model kit includes the following components:

- Plastic sprues containing various parts for the trailer chassis, wheels, and other structural elements.
- Plastic sprues for the 40 ft container body.
- Rubber tires.
- Decal sheet for markings and details.

- Illustrated assembly instructions.

Note: Tools, glue, and paints are not included with this plastic kit and must be purchased separately.



Image 3.1: The fully assembled Italeri 1:24 Container Trailer 40 ft model, showcasing its detailed design and blue container.

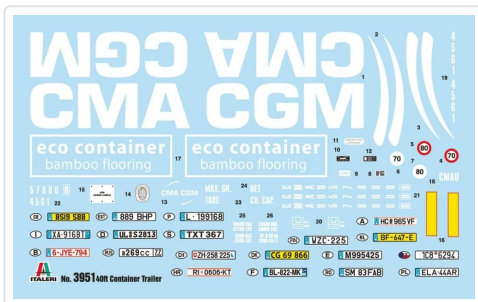


Image 3.2: Decal sheet with various markings and logos, including 'CMA CGM' and other regulatory information, for application on the model.

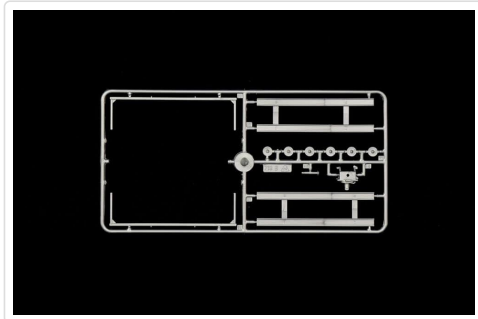


Image 3.3: A clear plastic sprue containing various small components for the trailer's undercarriage and structural details.

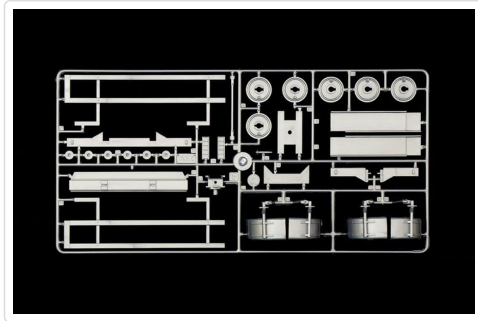


Image 3.4: A clear plastic sprue featuring parts for the trailer's suspension, axles, and other mechanical components.

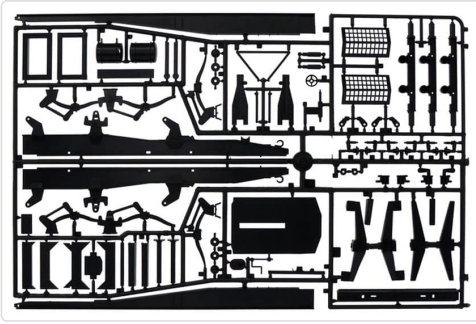


Image 3.5: A black plastic sprue containing larger structural elements, including parts for the main chassis frame and support legs.

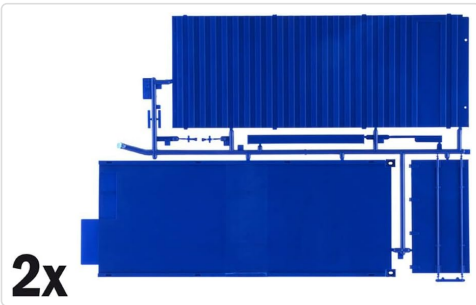


Image 3.6: Blue plastic sprue showing large sections of the container walls and roof, marked with '2x' indicating multiple identical parts.

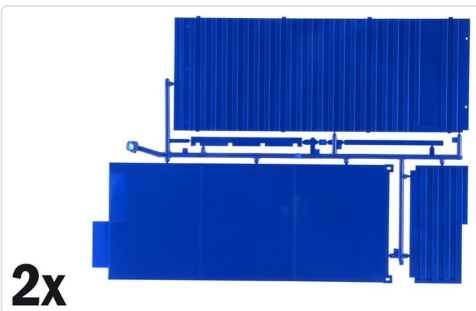


Image 3.7: Another blue plastic sprue with container wall sections, similar to Image 3.6, also marked '2x'.

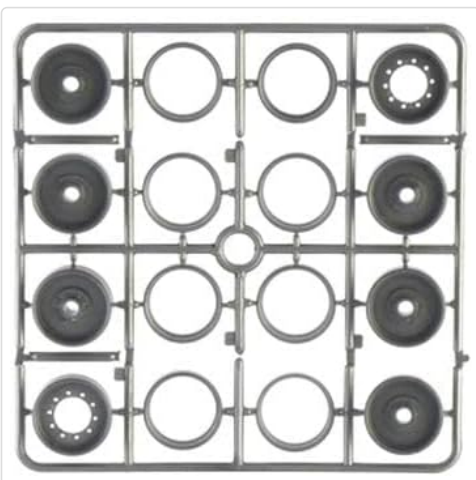


Image 3.8: A clear plastic sprue containing multiple circular wheel hub components for the trailer's wheels.

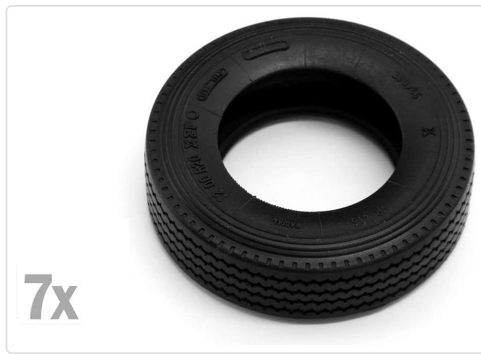


Image 3.9: Seven individual rubber tires, marked '7x', designed for the trailer's wheels, showing tread detail.

4. SETUP AND ASSEMBLY

Follow the step-by-step illustrated assembly instructions provided in the kit. The general process involves:

1. **Preparation:** Carefully remove parts from the sprues using a hobby knife or clippers. Clean any excess plastic (flash) from the parts using a hobby knife or sandpaper.
2. **Dry Fit:** Before applying glue, dry fit parts to ensure proper alignment and fit.
3. **Assembly Sequence:** Follow the numerical sequence in the instruction manual. Typically, assembly begins with the chassis, followed by the suspension, wheels, and then the container body.
4. **Adhesion:** Use plastic model cement sparingly to join parts. Allow sufficient drying time as recommended by the glue manufacturer.
5. **Painting:** Parts can be painted according to your preference. It is often easier to paint certain sub-assemblies before joining them. Refer to the instruction manual for suggested color schemes or customize your model.
6. **Decals:** Apply decals after painting and a clear gloss coat. Follow the decal application instructions carefully for best results.

5. OPERATING (DISPLAY AND INTERACTION)

Once assembled, your Italeri 1:24 Container Trailer model is designed for static display. It can be paired with other 1:24 scale truck models or dioramas to create realistic scenes. The model features detailed components that allow for close inspection and appreciation of its design.

- **Display:** Place the model on a stable, flat surface away from direct sunlight, excessive heat, or humidity to prevent damage or discoloration.
- **Handling:** Handle the model carefully, avoiding excessive force on delicate parts.

6. MAINTENANCE

Proper maintenance will help preserve the appearance and integrity of your model over time.

- **Cleaning:** Dust the model regularly with a soft, dry brush or a lint-free cloth. For stubborn dust, a very lightly dampened cloth can be used, but avoid excessive moisture, especially on decals or painted surfaces.
- **Avoid Chemicals:** Do not use harsh chemical cleaners, solvents, or abrasive materials, as these can damage the plastic, paint, or decals.

- **Storage:** If storing the model for an extended period, keep it in a dust-free environment, ideally in a display case or a sealed container.

7. TROUBLESHOOTING

Here are some common issues and solutions during model assembly:

- **Parts Not Fitting:** Ensure all flash is removed from the parts. Check the instruction manual to confirm you are using the correct parts and orientation. Sometimes, a small amount of sanding or trimming may be required for a perfect fit.
- **Decals Not Adhering:** Ensure the surface is clean and smooth. A gloss coat before decal application can help. Use decal setting solutions to help decals conform to irregular surfaces and adhere better.
- **Paint Issues:** Ensure surfaces are clean and dry before painting. Apply paint in thin, even coats to avoid brush marks or clumping. Allow each coat to dry thoroughly before applying the next.

8. SPECIFICATIONS

Feature	Detail
Brand	Italeri
Model Number	3951S
Scale	1:24
Item Type	Container Trailer 40 ft Model Building Kit
Material Type	Plastic
Assembly Required	Yes
Recommended Age	14 years and up (Manufacturer Minimum Age: 168 months)
Operation Mode	Manual (for assembly and display)
Indoor/Outdoor Usage	Indoor
Color	Blue (container)
Item Weight	1.1 Pounds
Item Dimensions (L x W x H)	3.94 x 14.57 x 9.65 inches

9. WARRANTY INFORMATION

Italeri products are manufactured to high standards. For specific warranty details regarding manufacturing defects or missing parts, please refer to the information provided within the product packaging or contact Italeri directly through their official website. Keep your proof of purchase for any warranty claims.

10. SUPPORT

For further assistance, questions regarding assembly, or to report missing/damaged parts, please contact

Italeri customer support. You can typically find contact information on the product packaging or by visiting the official Italeri website:

Italeri Official Website: www.italeri.com

Please have your model number (3951S) and purchase details ready when contacting support.

© 2024 Italeri. All rights reserved.