

GAN GAN 3X3

GAN 356 M Speed Cube User Manual

Model: GAN 3X3

Brand: GAN

1. INTRODUCTION

This manual provides essential information for the proper use, setup, maintenance, and troubleshooting of your GAN 356 M Speed Cube. Please read these instructions carefully to ensure optimal performance and longevity of your product.

2. PRODUCT OVERVIEW

The GAN 356 M is a high-performance 3x3 magnetic speed cube designed for enthusiasts and competitive cubers. It incorporates advanced features for a smooth and stable solving experience.

2.1 Key Features

- **Magnetic Positioning System:** Visible magnets provide precise alignment and a satisfying tactile feel during turns.
- **GES+ (GAN Elastic System):** Allows for easy tuning of tension and elasticity to customize the cube's feel.
- **Honeycomb V2 Design:** The internal honeycomb structure reduces friction and helps distribute lubricant evenly, enhancing smoothness and durability.
- **Anti-Pop and Anti-Twist Design:** Classical corner feet and an all-symmetry locked clips design prevent pieces from popping out or twisting during fast solves.
- **Stickerless Design:** Durable, vibrant colors are integrated directly into the plastic, eliminating the need for stickers.

2.2 What's in the Box

- GAN 356 M Speed Cube
- GAN Bag



Figure 1: The GAN 356 M Speed Cube, showcasing its vibrant stickerless design and the central GAN logo.

MAGNETIC ASSISTANCE, UNBELIEVABLE SMOOTHNESS



48 Visible Magnet Capsules



Honeycomb v2 Design: Endurable Lubrication



Figure 2: An illustration of the cube's internal mechanism, highlighting the visible magnet capsules and the honeycomb v2 design for enhanced lubrication and smooth turning.

HARD FALLS, HARDLY BREAKS

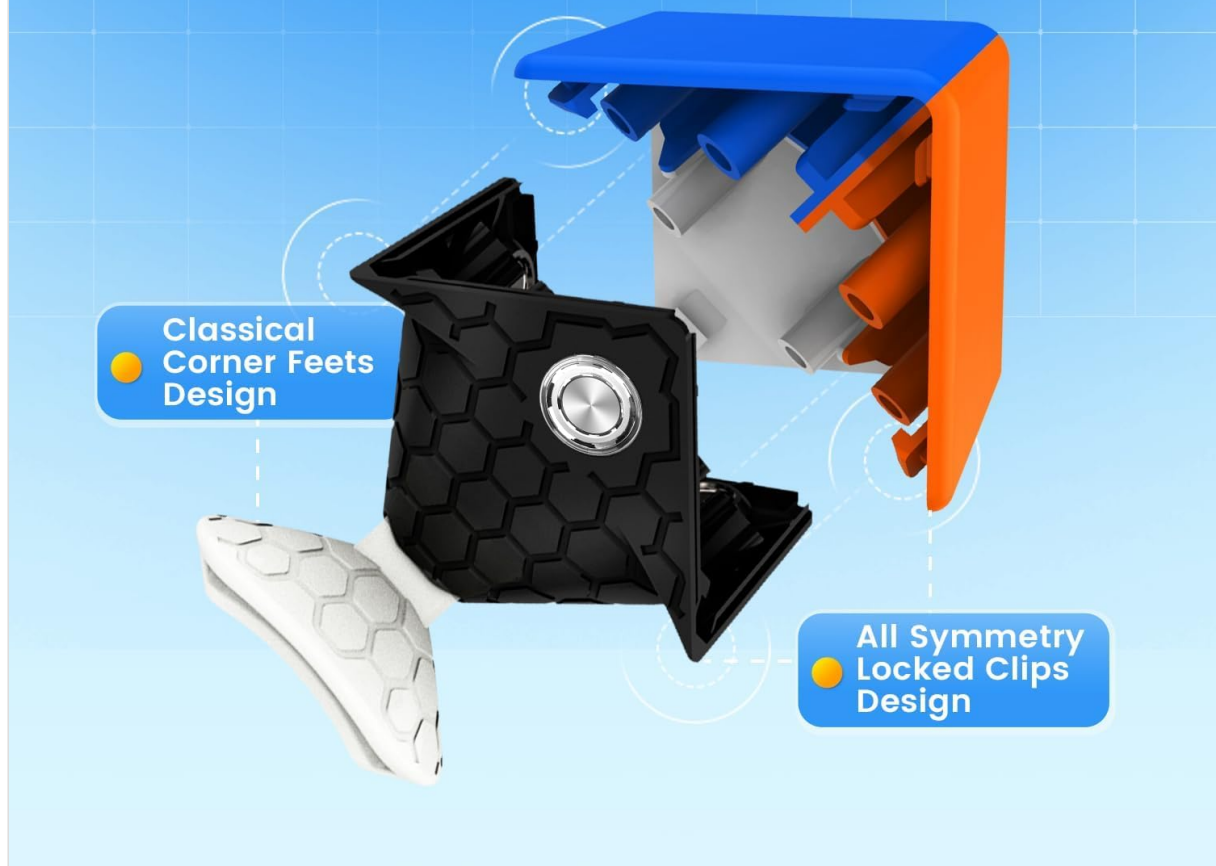


Figure 3: A detailed view of the corner piece design, illustrating the classical corner feet and all-symmetry locked clips that contribute to the cube's durability and anti-pop characteristics.

3. SETUP

Your GAN 356 M Speed Cube comes pre-assembled and ready for use. No complex setup is required. Upon unboxing, you may wish to perform initial adjustments to suit your personal preference.

3.1 Initial Inspection

Remove the cube from its packaging and the included GAN Bag. Inspect all faces and pieces to ensure they are intact and move freely. The stickerless design means there are no stickers to apply or worry about peeling.

3.2 GES+ Tuning System

The GAN 356 M features the GES+ (GAN Elastic System) for easy tension adjustment. This system allows you to modify the elasticity and spring compression of the cube without needing to disassemble it. To adjust, locate the small caps on the center pieces. Gently pry off a cap to reveal the GES+ mechanism. You can then rotate the mechanism to select different tension settings. Refer to the markings on the mechanism for guidance on softer or tighter settings.



Figure 4: An exploded view illustrating the internal components of the GAN 356 M, including the core and the GES+ tuning system, which allows for customized tension settings.

4. OPERATING INSTRUCTIONS

The GAN 356 M operates like any standard 3x3 speed cube. The goal is to scramble the cube and then return each face to a single, solid color. The magnetic assistance will guide your turns, providing a crisp and stable feel.

4.1 Basic Manipulation

- **Turning Faces:** Hold the cube firmly and rotate any of the six faces (Up, Down, Front, Back, Left, Right) by 90, 180, or 270 degrees.
- **Layer Turns:** You can also turn middle layers by rotating two adjacent faces in opposite directions.
- **Magnetic Feel:** The magnets will provide a slight "snap" into place as layers align, aiding in precise movements.

4.2 Advanced Tuning (GES+)

Experiment with the GES+ settings to find the ideal balance of speed and control for your solving style. Tighter settings generally offer more stability, while looser settings can allow for faster, more fluid turns. Adjust one setting at a time and test the cube to observe the changes in feel.



Figure 5: A close-up image showing the internal core and the adjustable tension system of the GAN 356 M, demonstrating how users can fine-tune the cube's performance.

5. MAINTENANCE

Regular maintenance will help preserve the performance and lifespan of your GAN 356 M Speed Cube.

5.1 Cleaning

- Wipe the exterior of the cube with a soft, dry cloth to remove dust and fingerprints.

- Avoid using harsh chemicals or abrasive materials, as these can damage the plastic.

5.2 Lubrication

Over time, the cube's turning may become less smooth. Applying a small amount of speed cube lubricant can restore its performance. The internal honeycomb V2 design is optimized to retain lubricant effectively.

- Apply 1-2 drops of silicone-based speed cube lubricant into the gaps between the pieces.
- Work the lubricant in by performing several turns on all faces.
- Wipe off any excess lubricant from the exterior.

Note: Use lubricants specifically designed for speed cubes. Other lubricants may damage the plastic.

6. TROUBLESHOOTING

Here are some common issues and their solutions:

6.1 Cube Feels Stiff or Grindy

- **Solution:** Apply lubricant as described in Section 5.2. Ensure the cube is clean and free of debris.
- **Solution:** Check your GES+ settings. A setting that is too tight can make the cube feel stiff. Try a slightly looser setting.

6.2 Pieces Pop Out (Popping)

- **Solution:** This is less common with the GAN 356 M due to its anti-pop design. However, if it occurs, check your GES+ settings. A setting that is too loose can increase the likelihood of pops. Try a slightly tighter setting.
- **Solution:** Ensure all pieces are correctly assembled. If a piece has popped out, carefully reinsert it.

6.3 Corner Twists

- **Solution:** The GAN 356 M is designed to resist corner twists. If one occurs, simply twist the corner piece back into its correct orientation. If it happens frequently, consider tightening the GES+ settings.

7. SPECIFICATIONS

Feature	Detail
Product Dimensions	2.2 x 2.2 x 0.04 inches
Item Weight	2.82 ounces
Model Number	GAN 3X3
Manufacturer	GAN
Recommended Age	3 years and up

8. SAFETY INFORMATION

Warning: Not suitable for children under 36 months due to small parts which may present a choking hazard.

9. CUSTOMER SERVICE AND SUPPORT

For any questions, concerns, or assistance with your GAN 356 M Speed Cube, please contact GAN customer service. The customer service team is available to provide support and ensure satisfaction. You can often find support and additional resources on the official GAN website or through the retailer where the product was purchased.

For more information about GAN products, visit the [GAN Store on Amazon](#).
