

## Manuals+

[Q & A](#) | [Deep Search](#) | [Upload](#)

manuals.plus /

› [CHENGDAO](#) /

› [CHENGDAO Wireless Controller for PS4 User Manual](#)

## CHENGDAO PS415

# CHENGDAO Wireless Controller for PS4 User Manual

Model: PS415

## 1. INTRODUCTION

---

This manual provides detailed instructions for the CHENGDAO Wireless Controller, designed for use with PlayStation 4 consoles (PS4, PS4 Slim, PS4 Pro), PC, Android devices, and iPhones. It covers setup, operation, maintenance, and troubleshooting to ensure optimal performance and user experience.

## 2. PACKAGE CONTENTS

---

Please verify that all items listed below are included in your package:

- CHENGDAO Wireless Controller (2 units)
- USB Charging Cable (2 units)
- User Manual (this document)



Image 2.1: Two CHENGDAO Wireless Controllers and USB Charging Cables. The package includes two controllers, one featuring a skull pattern and the other a galaxy pattern, along with their respective USB charging cables.

### 3. PRODUCT OVERVIEW

---

The CHENGDAO Wireless Controller is engineered to provide an immersive gaming experience with advanced features and ergonomic design.

#### 3.1 Key Features

- **Wide Compatibility:** Compatible with PlayStation 4/Pro/Slim, PC, Android, and iPhone.
- **Enhanced Sensitivity:** Features sensitive 360° joysticks and trigger buttons for precise control.
- **Double Vibration:** Built-in dual motors provide varied vibration feedback for enhanced immersion.
- **6-Axis Motion Sensor:** Accurately captures movements for responsive in-game actions.
- **Sensitive Touch Pad:** Multi-touch screen for rapid configuration and interactive gameplay.
- **Audio Options:** Integrated speaker and 3.5mm headset jack for versatile audio output.

- **Share Button:** Allows for instant capture and sharing of gameplay moments.
- **Long-lasting Battery:** Equipped with an 800mAh battery for extended play sessions.

## 3.2 Component Identification

Familiarize yourself with the various components of your controller:

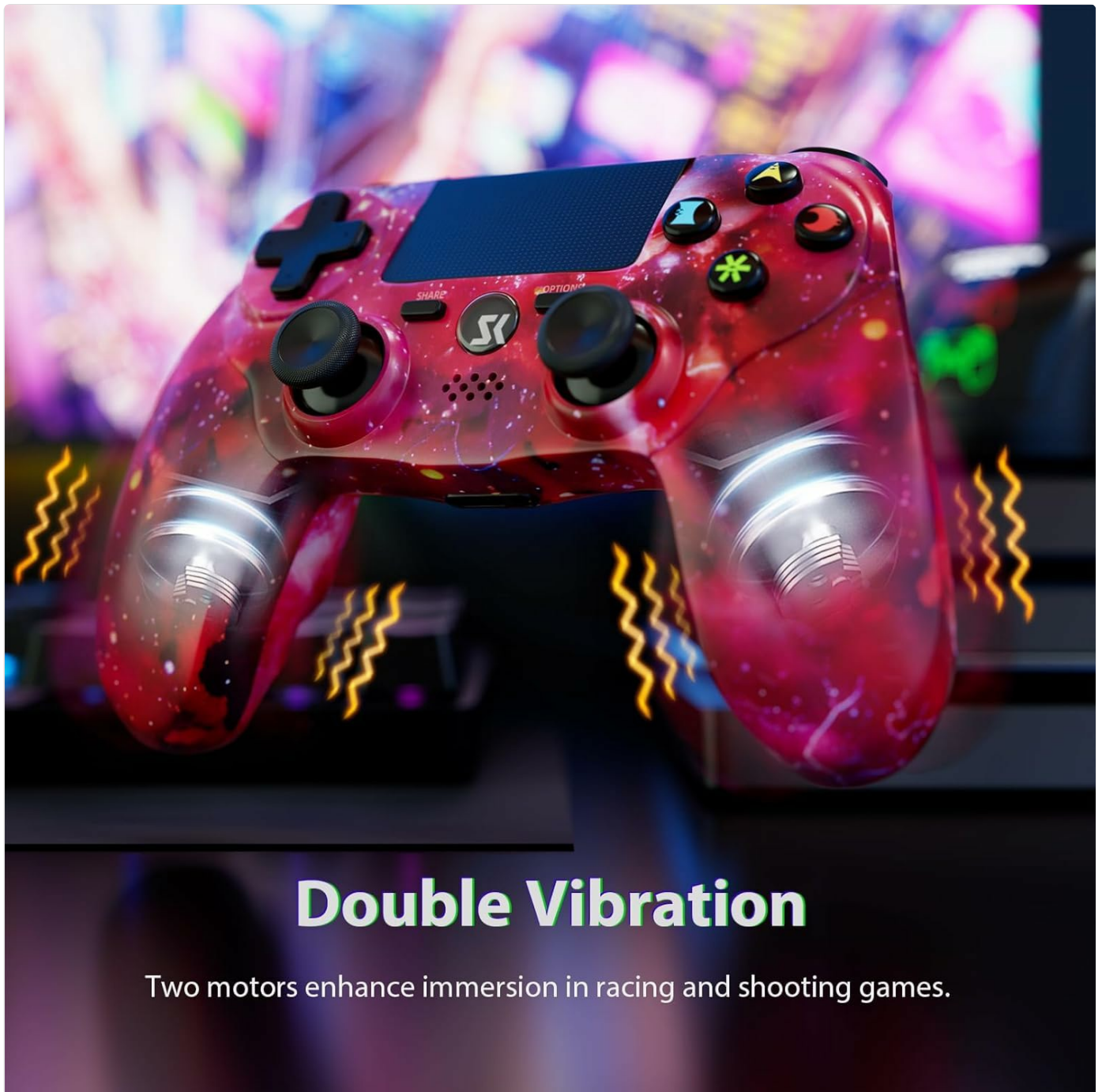
- **Directional Pad (D-Pad):** For directional input.
- **Left/Right Analog Sticks:** For precise movement and camera control.
- **Action Buttons (Triangle, Circle, Cross, Square):** For in-game actions.
- **SHARE Button:** For sharing gameplay content.
- **OPTIONS Button:** For accessing in-game menus and options.
- **PS Button:** For turning on/off the controller and accessing the system menu.
- **Touch Pad:** Interactive surface for gestures and input.
- **Speaker:** Built-in audio output.
- **3.5mm Headset Jack:** For connecting headphones or a headset.
- **L1/L2/R1/R2 Buttons:** Shoulder and trigger buttons.
- **USB Port:** For charging and wired connection.

# Smart Multi-Touch Screen

The screen enables rapid configuration of settings, including the option to set your favorite GIFs and emojis.



Image 3.1: Smart Multi-Touch Screen. The touch pad allows for rapid configuration and interactive input.



## Double Vibration

Two motors enhance immersion in racing and shooting games.

Image 3.2: Double Vibration Feature. Two internal motors provide haptic feedback for a more immersive gaming experience.

## 6- Axis Motion Sensing



Image 3.3: 6-Axis Motion Sensing. The controller detects tilt and rotation for precise in-game control.

## 4. SETUP

---

### 4.1 Charging the Controller

Before initial use, fully charge the controller. The built-in 800mAh battery provides extended playtime.

1. Connect the small end of the included USB charging cable to the USB port on the front of the controller.
2. Connect the larger end of the USB cable to a powered USB port on your PS4 console, PC, or a USB wall adapter.
3. The light bar on the controller will slowly pulse orange while charging and turn off when fully charged.

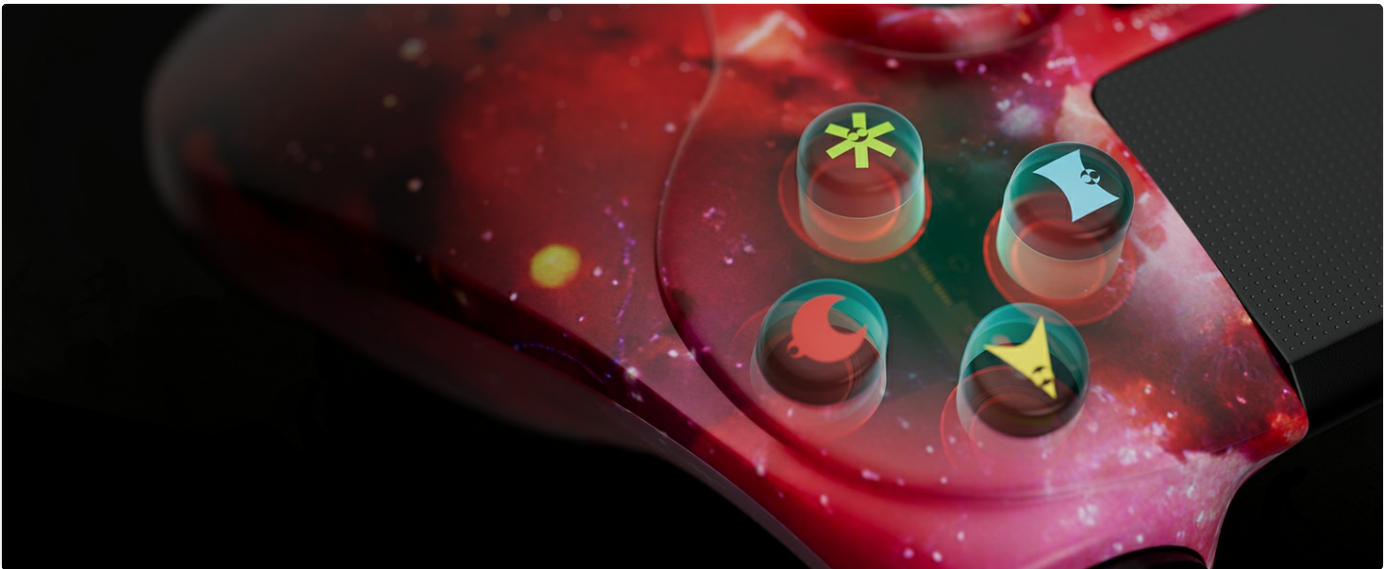


Image 4.1: Controller Charging Port and Battery Indicator. The controller features an 800mAh battery, charged via the USB port.

## 4.2 Initial Pairing (PS4)

For the first-time connection with your PS4 console, a wired connection is required.

1. Ensure your PS4 console is powered on.
2. Connect the controller to the PS4 console using the included USB charging cable.
3. Press the **PS button** on the controller. The controller will pair with the console, and the light bar will glow blue (or another color depending on player assignment).
4. Once paired, you can disconnect the USB cable for wireless play. The controller will automatically connect wirelessly in the future.

## 4.3 Pairing with PC/Android/iPhone

The controller supports Bluetooth connection for PC, Android, and iPhone devices.

1. Ensure Bluetooth is enabled on your device (PC, Android, iPhone).
2. On the controller, press and hold the **SHARE button** and the **PS button** simultaneously until the light bar begins to flash rapidly. This indicates the controller is in pairing mode.
3. On your device, search for new Bluetooth devices. The controller should appear as "Wireless Controller" or similar.
4. Select the controller to pair. Once connected, the light bar will stop flashing and remain solid.

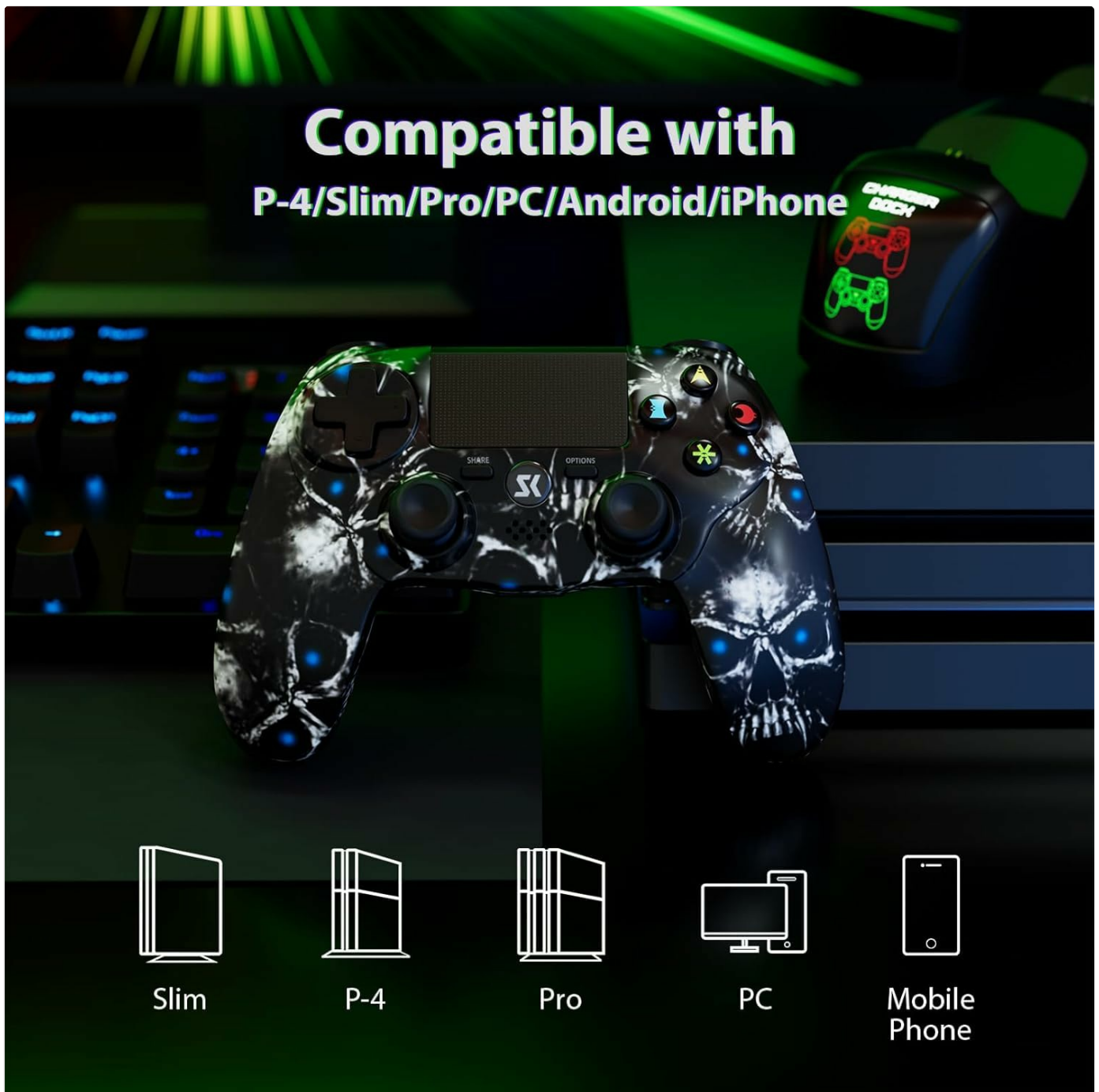


Image 4.2: Wide Compatibility. The controller is compatible with multiple platforms including PS4 consoles, PC, Android, and iPhone.

## 5. OPERATING THE CONTROLLER

---

### 5.1 Basic Controls

The controller functions similarly to standard PlayStation 4 controllers. Use the analog sticks for movement and camera control, and the D-Pad for menu navigation or specific game inputs. The action buttons (Triangle, Circle, Cross, Square) perform various in-game actions as defined by the game.



Image 5.1: Enhanced Analog Sticks. The 360° joysticks offer improved sensitivity for precise control.



Image 5.2: Responsive Action Buttons. The buttons are designed for quick and accurate input during gameplay.

## 5.2 Share Button Functionality

The **SHARE button** allows you to capture screenshots, record video clips, and broadcast your gameplay without interrupting your session. Press the SHARE button to access the Share menu and select your desired action.



Image 5.3: SHARE Button. Use this button to capture and share your gaming moments.

## 5.3 Audio Output

The controller offers two methods for audio output:

- **Built-in Speaker:** Some in-game audio effects and voice chat may be routed through the controller's integrated speaker.
- **3.5mm Headset Jack:** Connect any standard 3.5mm headset to the jack on the bottom of the controller for private audio and voice communication.

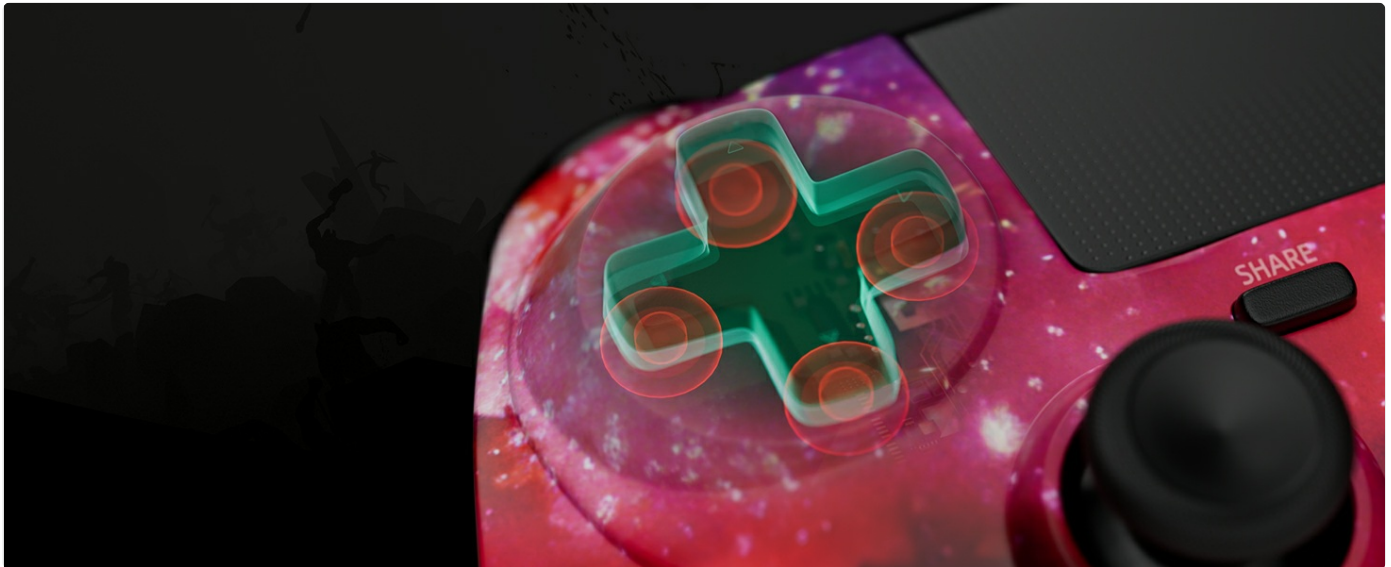


Image 5.4: 3.5mm Audio Jack. Connect your headset for private audio and communication.

## 6. MAINTENANCE

---

Proper care will extend the life of your controller.

- **Cleaning:** Use a soft, dry cloth to wipe the controller. For stubborn dirt, slightly dampen the cloth with water. Avoid harsh chemicals or abrasive materials.
- **Storage:** Store the controller in a cool, dry place away from direct sunlight and extreme temperatures.
- **Battery Care:** To maintain battery health, avoid fully discharging the controller frequently. Charge it regularly, even if not in use for extended periods.
- **Avoid Drops:** Protect the controller from physical impact, as internal components can be damaged.

## 7. TROUBLESHOOTING

---

If you encounter issues with your CHENGDAO Wireless Controller, refer to the solutions below.

### 7.1 Controller Not Connecting/Disconnecting Frequently

- **Re-pair the Controller:** For PS4, connect via USB cable and press the PS button. For other devices, follow the Bluetooth pairing steps in Section 4.3.
- **Check Battery Level:** Ensure the controller is sufficiently charged. Low battery can cause connection instability.
- **Reset the Controller:** Locate the small reset button on the back of the controller (often inside a small hole near the L2 button). Use a thin object (like a straightened paperclip) to press and hold the button for 3-5 seconds. Then, attempt to re-pair.
- **Interference:** Move closer to your console/device and ensure there are no large obstructions or other wireless devices causing interference.

- **Update System Software:** Ensure your PS4 console or other device's operating system is up to date.

## 7.2 Buttons/Joysticks Unresponsive

- **Reset Controller:** Perform a hard reset as described above.
- **Clean:** Ensure no debris is lodged around the buttons or joysticks.
- **Test on Another Device:** If possible, test the controller on a different compatible device to determine if the issue is with the controller or the original device/game.

## 7.3 Battery Not Charging

- **Check Cable:** Ensure the USB charging cable is not damaged and is securely connected at both ends. Try a different USB cable if available.
- **Try Different USB Port/Adapter:** Connect to a different USB port on your console/PC or use a different USB wall adapter.
- **Reset Controller:** A reset can sometimes resolve charging issues.

## 8. SPECIFICATIONS

Feature	Detail
Model Number	PS415
Compatibility	PlayStation 4/Pro/Slim, PC, Android, iPhone
Connectivity	Wireless (Bluetooth), Wired (USB)
Battery Capacity	800mAh Lithium Polymer
Motion Sensor	6-Axis Gyroscope
Vibration	Double Vibration Motors
Audio Output	Built-in Speaker, 3.5mm Headset Jack
Dimensions	7.36 x 5.2 x 4.88 inches
Weight	1.32 Pounds
Manufacturer	CHENGDAO
Date First Available	July 10, 2019

## 9. WARRANTY AND SUPPORT

CHENGDAO is committed to providing quality gaming hardware. Should you encounter any issues or require assistance with your controller, please contact our dedicated support team. Refer to your purchase documentation for specific warranty terms and contact information.

