

POPOMAN MTM320B

POPOMAN Green Laser Level MTM320B User Manual

Model: **MTM320B** | Brand: **POPOMAN**

1. IMPORTANT SAFETY INFORMATION

Please read and understand all safety instructions before operating the POPOMAN MTM320B Laser Level. Failure to follow these instructions may result in serious injury.

- **Laser Radiation:** This equipment is a Class 2 laser product. Do not stare directly into the laser beam. Avoid direct eye exposure to the laser.
- **Power Source:** Use only the specified charging cable and power source. Do not attempt to open or modify the battery pack.
- **Operating Environment:** Do not operate the device in explosive atmospheres, such as in the presence of flammable liquids, gases, or dust.
- **Water and Dust Resistance:** The device has an IP54 rating, providing protection against splashes and dust. However, it is not fully waterproof and should not be submerged.
- **Children:** Keep the device out of reach of children and unauthorized personnel.
- **Storage:** Store the device in a cool, dry place when not in use.

2. PACKAGE CONTENTS

Verify that all items listed below are included in your package:

- 1 x POPOMAN MTM320B Green Laser Level
- 1 x USB Type-C Charging Cable
- 1 x Rectangular Magnetic Bracket
- 1 x Rotating Base
- 1 x Protective Pouch

- 1 x User Manual
- 1 x 4500mAh Lithium Battery (internal)



Figure 2.1: Included components of the POPOMAN MTM320B Laser Level kit.

3. PRODUCT OVERVIEW

The POPOMAN MTM320B is a versatile green laser level designed for various leveling and alignment tasks. It features a bright green laser, USB charging, and multiple operating modes.



Figure 3.1: Key components and features of the MTM320B Laser Level.

Laser On/Off Switch: Controls the power and mode of the laser.

Pendulum Lock: Secures the pendulum for transport and enables manual mode.

USB Charging Port: For convenient recharging of the internal battery.

Replaceable Battery: The 4500mAh lithium battery can be replaced.

Tripod Screw Holes: 1/4"-20 and 5/8"-11 threads for mounting on tripods or other accessories.

4. SPECIFICATIONS

Feature	Specification
Laser Type	Green Laser, Class 2, <1mW power output

Feature	Specification
Projection	Cross Line + 2 Laser Plumb Dots (Up/Down)
Working Distance (Line)	25 meters (82 feet)
Working Distance (Dot)	60 meters (197 feet)
Working Distance (Pulse Mode with Detector)	40 meters (131 feet)
Leveling Accuracy	± 3 mm at 10 meters (± 1/8 inch at 33 feet)
Self-Leveling Range	4° ± 1°
Power Source	4500mAh Lithium-Ion Battery (rechargeable via USB-C)
Operating Time	Up to 20 hours (all lasers on)
Tripod Thread	1/4"-20, 5/8"-11
IP Rating	IP54 (Splash and Dust Proof)
Dimensions	11.2 x 6.8 x 9.7 cm (4.4 x 2.7 x 3.8 inches)
Weight	340 g (0.75 lbs)

5. SETUP AND CHARGING

5.1 Charging the Battery

The POPOMAN MTM320B is equipped with a 4500mAh rechargeable lithium battery. Before first use, ensure the battery is fully charged.

- Connect the provided USB Type-C cable to the charging port on the laser level.
- Connect the other end of the USB cable to a compatible USB power source (e.g., wall adapter, power bank, computer USB port, car charger).
- The battery indicator on the device will show the charging status. A full charge provides approximately 20 hours of continuous operation with all lasers on.

20 ORE

APPLICAZIONE SU UN SOLO CARICO



ACCUMULATORE DI ENERGIA



ADATTATORE PER CA



PORTATILE



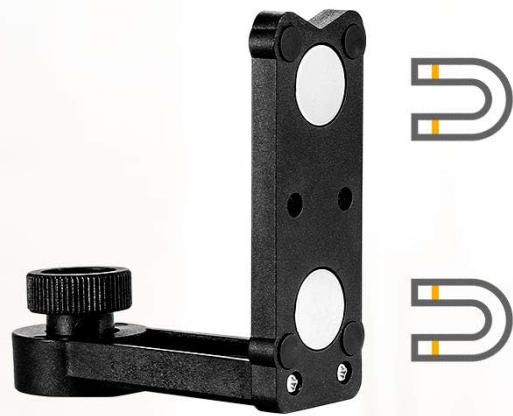
CARICA AUTO

Figure 5.1: Flexible USB charging options for the MTM320B.

5.2 Mounting the Laser Level

The MTM320B can be used freestanding or mounted using its accessories.

- **Freestanding:** Place the laser level on a stable, flat surface.
- **Using the Rotating Base:** Attach the laser level to the rotating base via the 1/4"-20 screw thread for 360-degree rotation and fine positioning.
- **Using the Magnetic Bracket:** The rectangular magnetic bracket allows attachment to metal surfaces. It also has a 1/4"-20 thread for mounting the laser level and a 5/8"-11 thread for larger tripods.
- **Tripod Mounting:** The device is compatible with standard tripods using either the 1/4"-20 or 5/8"-11 screw threads located at the bottom.



MULTIFUNZIONE SUPPORTO

LAVORARE IN UNA VARIETÀ DI AMBIENTI
CON TRE ACCESSORI
MULTIFUNZIONE SUPPORTO



Figure 5.2: Versatile mounting options with the magnetic bracket and rotating base.

6. OPERATING INSTRUCTIONS

The POPOMAN MTM320B offers multiple operating modes for different applications.

6.1 Power On/Off and Mode Selection

- To power on the device, slide the pendulum lock switch to the unlocked position. The laser will automatically enter self-leveling mode.
- Press the power button (usually on top) to cycle through different laser line combinations (e.g., horizontal line, vertical line, cross lines, plumb dots).
- To power off, slide the pendulum lock switch back to the locked position. This also protects the pendulum during transport.

6.2 Self-Leveling Mode

- When the pendulum lock is in the unlocked position, the device will automatically self-level within a 4° range.
- If the device is placed on a surface with an inclination greater than 4°, the laser lines will flash rapidly to indicate that it is out of level. Adjust the position of the device until the lines stop flashing and become steady.
- This mode is ideal for applications requiring precise horizontal and vertical alignment, such as hanging pictures, installing cabinets, or tiling.

6.3 Manual Mode (Locked Mode)

- To activate manual mode, ensure the pendulum lock switch is in the **locked** position.
- Press and hold the power button for a few seconds until the laser lines appear. The lines will not self-level and can be projected at any angle.
- This mode is useful for projecting angled lines, such as for staircase installations or decorative painting.

6.4 Pulse Mode

- Pulse mode extends the working range of the laser and improves visibility in brighter conditions when used with a laser detector (not included).
- To activate pulse mode, typically press a dedicated pulse mode button or hold the power button in self-leveling mode. Refer to the device's specific button layout for exact activation.
- In pulse mode, the working distance can extend up to 40 meters (131 feet).



Figure 6.1: Examples of MTM320B applications in construction and home renovation.

7. MAINTENANCE AND CARE

Proper maintenance ensures the longevity and accuracy of your POPOMAN MTM320B Laser Level.

- **Cleaning:** Wipe the device with a soft, damp cloth. Do not use abrasive cleaners, solvents, or harsh chemicals. Ensure the laser output window is clean for optimal beam clarity.
- **Storage:** When not in use, store the laser level in its protective pouch in a cool, dry place, away from direct sunlight and extreme temperatures. Ensure the pendulum lock is engaged to protect the internal mechanism.
- **Battery Care:** For long-term storage, it is recommended to charge the battery to about 50% every few months to maintain battery health. Avoid fully discharging the battery for extended periods.
- **IP54 Protection:** The IP54 rating means the device is protected against dust ingress and splashing water from any direction. While it can withstand light splashes, avoid exposing it to heavy rain or submerging it in water.



Figure 7.1: MTM320B's IP54 water and dust resistance features.

8. TROUBLESHOOTING

If you encounter issues with your POPOMAN MTM320B, refer to the following common problems and solutions:

Problem	Possible Cause	Solution
Laser lines are blinking rapidly in self-leveling mode.	The device is placed on a surface that is outside its self-leveling range ($>4^\circ$ inclination).	Adjust the position of the laser level to a flatter surface until the lines become steady.

Problem	Possible Cause	Solution
Laser lines appear dim or are not visible.	<ul style="list-style-type: none"> ◦ Low battery. ◦ Operating in very bright ambient light or direct sunlight. ◦ Laser output window is dirty. 	<ul style="list-style-type: none"> ◦ Recharge the battery. ◦ Move to a less brightly lit area or use a laser detector in pulse mode for outdoor/bright conditions. ◦ Clean the laser output window with a soft, lint-free cloth.
Device does not power on.	<ul style="list-style-type: none"> ◦ Battery is completely discharged. ◦ Pendulum lock is engaged. 	<ul style="list-style-type: none"> ◦ Charge the battery for at least 30 minutes. ◦ Slide the pendulum lock switch to the unlocked position.
Inaccurate measurements.	<ul style="list-style-type: none"> ◦ Device is not properly self-leveled. ◦ Impact or damage to the device. 	<ul style="list-style-type: none"> ◦ Ensure the device is on a stable surface and the lines are steady (not blinking). ◦ If accuracy issues persist after checking leveling, the device may require professional calibration or service.

9. WARRANTY AND SUPPORT

POPOMAN offers a **2-year quality commitment** for the MTM320B Laser Level.

If you have any questions, concerns, or require technical assistance, please contact POPOMAN customer support through the email address provided on our Amazon Shop page or through the contact information in your purchase documentation.

Please retain your proof of purchase for warranty claims.