

HOROW HWMT-8733S

HOROW HWMT-8733S Compact One-Piece Toilet Instruction Manual

Model: HWMT-8733S

1. INTRODUCTION

This manual provides detailed instructions for the installation, operation, and maintenance of your new HOROW HWMT-8733S compact one-piece toilet. Please read all instructions carefully before beginning installation or use to ensure proper function and safety. Keep this manual for future reference.

2. PRODUCT OVERVIEW

The HOROW HWMT-8733S is a modern, compact one-piece toilet designed for smaller bathrooms, powder rooms, or water closets. Its sleek design and efficient features aim to optimize space and provide reliable performance.

Key Features:

- **Compact Design:** Ideal for small spaces, with dimensions of 25" L x 13.4" W x 28.4" H.
- **Dual Flush System:** Offers 1.1 GPF (gallons per flush) for liquid waste and 1.6 GPF for solid waste, promoting water conservation.
- **Soft-Close Seat:** Prevents slamming and reduces noise.
- **Fully Skirted Trapway:** Provides a smooth surface for easy cleaning and a modern aesthetic.
- **12-inch Rough-in:** Standard rough-in measurement for installation.



Figure 2.1: The HOROW HWMT-8733S compact one-piece toilet, showcasing its modern design and space-saving profile.

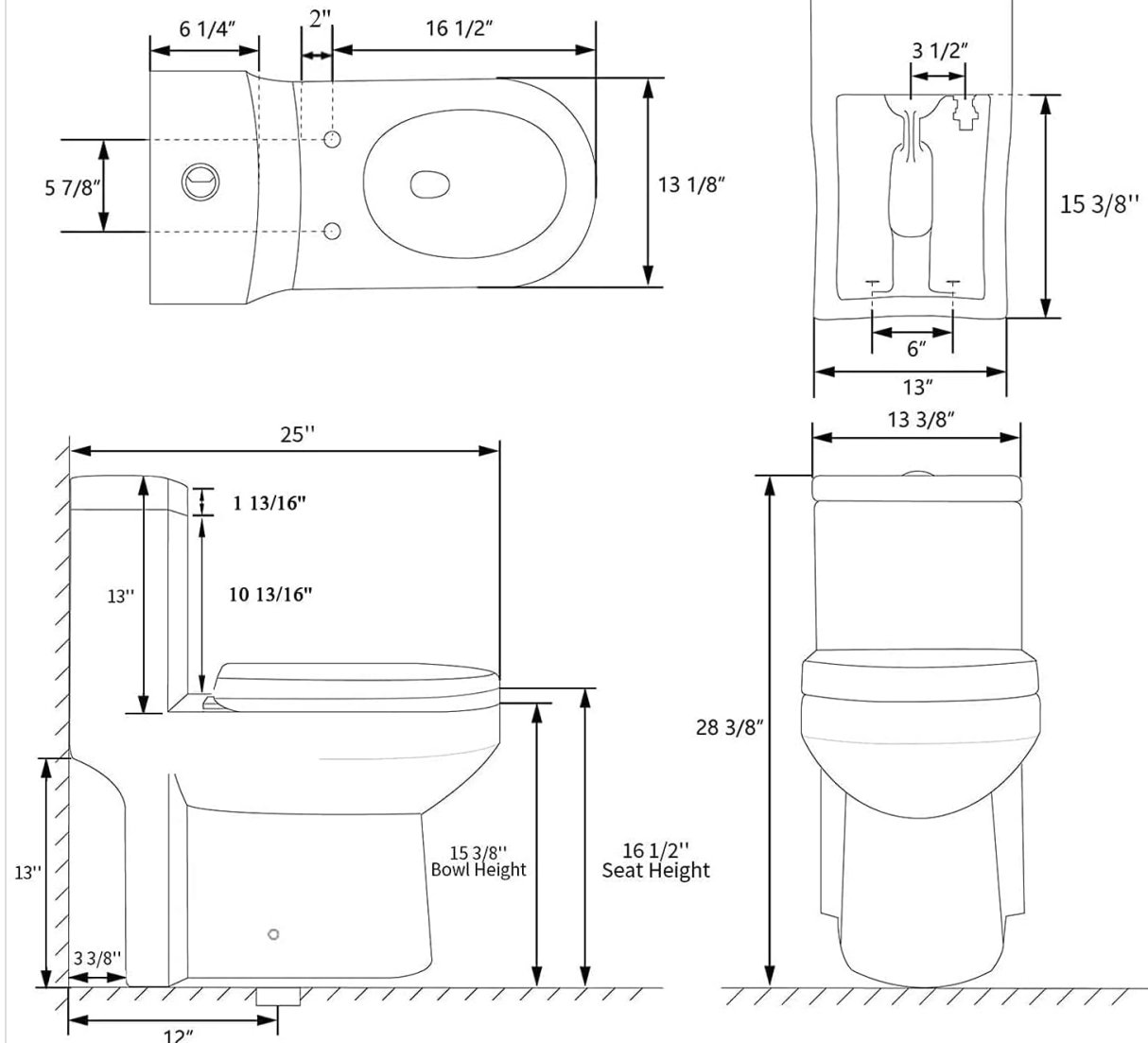
HOROW®**12" Rough-in**

Figure 2.2: Detailed dimensions of the HOROW HWMT-8733S toilet, including length, width, height, seat height, and bowl height, with a 12-inch rough-in.

3. COMPONENTS INCLUDED

The following components are included with your HOROW HWMT-8733S toilet:

- Toilet Bowl and Tank (One-Piece)
- Toilet Seat
- Flushing Mechanism (pre-installed)
- Wax Ring
- Floor Bolts
- Installation Instruction Manual

Note: The water supply line must be purchased separately.

4. SETUP AND INSTALLATION

Professional installation is recommended. Ensure all local plumbing codes are followed.

4.1. Floor Flange and Wax Ring Installation

1. Ensure the floor flange is securely installed and level with the finished floor.
2. Insert the two floor bolts into the floor flange, ensuring they are properly aligned.
3. Place the wax ring evenly around the outlet opening on the bottom of the toilet.

4.2. Setting the Toilet

4. Carefully lower the toilet onto the floor bolts, aligning the bolt holes on the toilet base with the bolts.
5. Press down firmly and evenly to compress the wax ring and create a watertight seal.
6. Secure the toilet to the floor bolts using washers and nuts. Do not overtighten, as this may crack the ceramic.

4.3. Water Supply Connection

7. Connect the water supply line to the toilet's inlet valve. If your supply line is 1/2", connect directly. If it's a U.S. standard 7/8", remove the adapter on the toilet's inlet valve before connecting.
8. Tighten the connection securely, but do not overtighten.
9. Turn on the water supply valve and check for leaks.



Figure 4.1: Illustration of the suggested inlet valve location for optimal installation, ensuring proper clearance and connection.

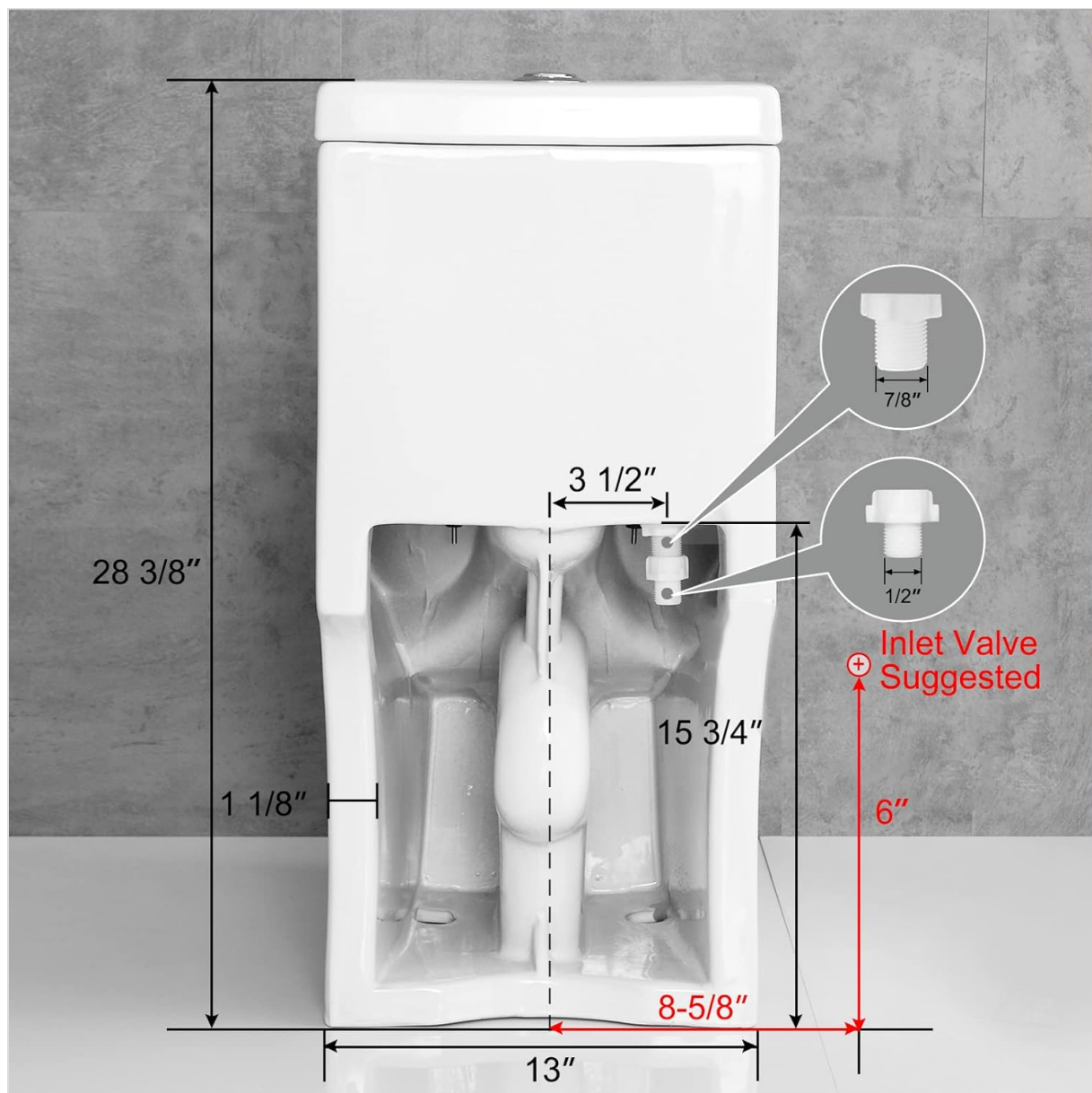


Figure 4.2: Diagram showing the toilet's inlet valve and the two compatible hose sizes (1/2" and 7/8" with adapter removal).

4.4. Toilet Seat Installation

10. Unwrap the toilet seat and identify the hinge components.
11. Insert the rubber firmware into the holes on the toilet bowl.
12. Place the hinge bases over the rubber firmware and rotate them to the correct direction.
13. Insert the seat cover onto the hinge posts.
14. Adjust the hinge position to align the seat cover with the toilet bowl.
15. Tighten the seat screws to secure the hinges.
16. Place the decorative caps over the hinge bases.

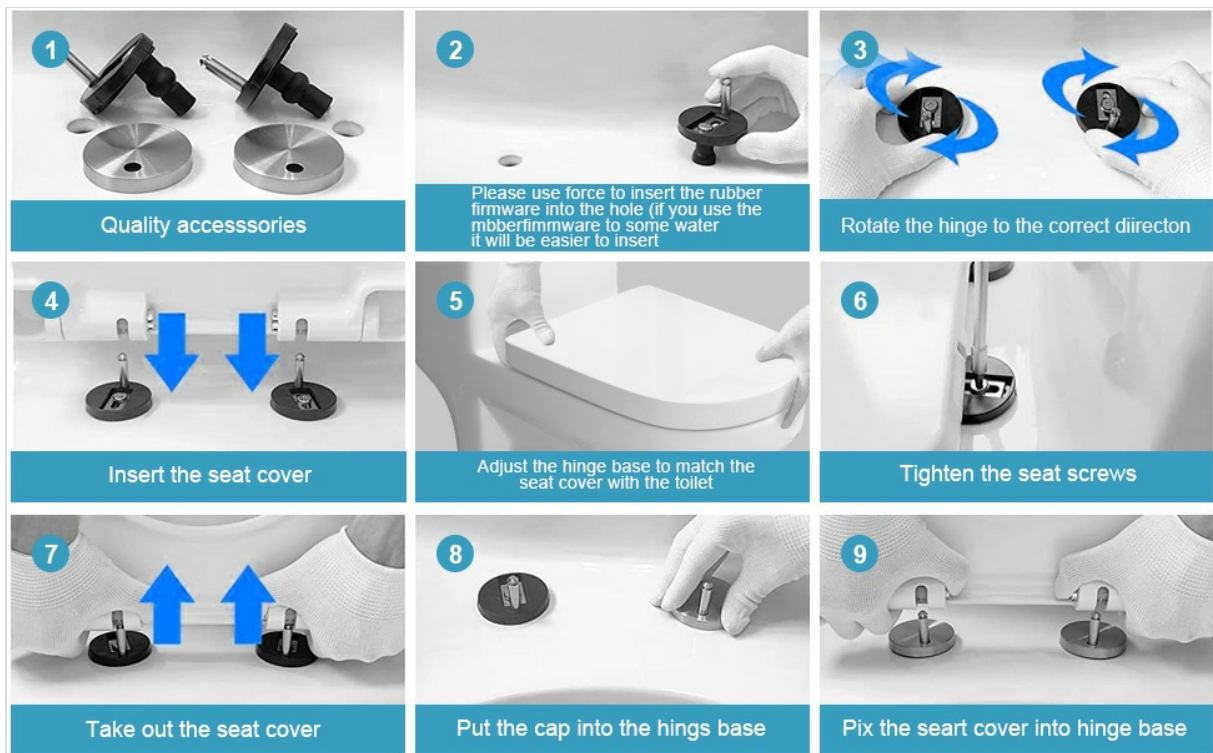


Figure 4.3: Step-by-step visual guide for installing the quick-release soft-close toilet seat.

4.5. Installation Videos:

Your browser does not support the video tag.

Video 4.1: Official installation instructions for the HOROW HWMT-8733S toilet, demonstrating the complete setup process.

Your browser does not support the video tag.

Video 4.2: Detailed guide on installing the quick-release toilet seat, highlighting the steps for secure attachment.

5. OPERATING INSTRUCTIONS

5.1. Dual Flush Operation

The HOROW HWMT-8733S features a dual-flush mechanism located on top of the tank. This allows for efficient water usage based on your needs:

- **Small Button (1.1 GPF):** Press the smaller button for liquid waste, using less water.
- **Large Button (1.6 GPF):** Press the larger button for solid waste, providing a more powerful flush.



Figure 5.1: Close-up of the dual flush buttons on the tank lid.

5.2. Soft-Close Seat

The toilet seat is designed with a soft-close feature to prevent loud slamming. Simply push the seat or lid down gently, and it will lower slowly and quietly on its own.



Figure 5.2: Demonstration of the soft-close toilet seat, showing its slow and quiet descent.

6. MAINTENANCE

6.1. Cleaning

The fully skirted trapway design of the HWMT-8733S makes it easy to clean. Use a soft cloth and mild, non-abrasive cleaners. Avoid harsh chemicals or abrasive pads that could damage the ceramic finish. The quick-release seat can be easily removed for thorough cleaning.



Figure 6.1: The skirted design of the toilet bowl, illustrating how it simplifies cleaning by eliminating hard-to-reach areas.

6.2. Seat Removal for Cleaning

To remove the quick-release seat for cleaning, press the release buttons located near the hinges and lift the seat straight up. Reattach by aligning the hinges and pressing down until they click into place.



Figure 6.2: Visual guide demonstrating the quick-release mechanism for easy seat removal and cleaning.

7. TROUBLESHOOTING

If you encounter issues with your HOROW HWMT-8733S toilet, please refer to the following common problems and solutions:

Problem	Possible Cause	Solution
Toilet does not flush or flushes weakly	Low water level in tank, clogged trapway, faulty flush valve.	Check water supply valve is fully open. Adjust water level in tank. Clear any obstructions in the trapway. Inspect or replace flush valve.

Problem	Possible Cause	Solution
Toilet continuously runs	Flapper not sealing properly, fill valve malfunction, float ball out of adjustment.	Check flapper for debris or wear and replace if necessary. Adjust float ball to ensure proper water level. Inspect or replace fill valve.
Leaks at the base of the toilet	Loose floor bolts, damaged wax ring, cracked toilet base.	Tighten floor bolts (do not overtighten). Replace the wax ring. If the base is cracked, the toilet may need replacement.
Toilet seat is loose	Hinge screws are loose.	Tighten the hinge screws. Refer to the seat installation section for proper adjustment.

If these solutions do not resolve the issue, please contact HOROW customer service for further assistance.

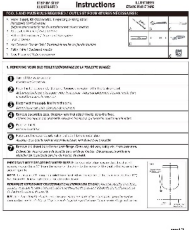





8. SPECIFICATIONS

Feature	Specification
Model Number	HWMT-8733S
Product Dimensions	25"D x 13.1"W x 28.3"H
Material	Ceramic
Item Weight	86 Pounds
Installation Type	Floor Mounted
Shape	Round
Seat Material Type	Plastic
Water Consumption	1.28 Gallons per Flush (Dual Flush)
Flush Type	Dual
Rough-In	12 Inches
Certification	CEC, Energy Star, WaterSense
Special Features	Perfect for half bath, powder room

9. WARRANTY AND SUPPORT

HOROW values each customer's shopping experience and stands behind the quality of its products. The HWMT-8733S toilet comes with a **1-year limited warranty** and **lifetime after-sales service**.

Our customer service center is available to respond to messages within 12 hours. For any questions, concerns, or warranty claims, please contact HOROW customer support through the retailer where the product was purchased or visit the official HOROW website.

	<p>HOROW Toilet Installation Guide and Limited Warranty</p> <p>Step-by-step instructions for installing HOROW one-piece and two-piece toilets, including seat installation, maintenance, troubleshooting, and warranty details. Features diagrams described in text.</p>
	<p>8733 Series One-Piece Toilet Installation & User Manual</p> <p>Comprehensive installation and user manual for the HOROW 8733 Series One-Piece Toilet, covering product details, installation procedures, care, cleaning, troubleshooting, and warranty information.</p>
	<p>HOROW T37 Smart Toilet: Features, Specifications, and Installation Guide</p> <p>Detailed specification sheet for the HOROW T37 smart toilet, including features, technical information, installation requirements, and parts included. Learn about its tankless flushing, dual flush, heated seat, and UV sterilization.</p>
	<p>HOROW One-Piece Toilet Installation and User Manual</p> <p>Comprehensive installation guide and user manual for the HOROW One-Piece Toilet, covering product features, installation steps, troubleshooting, and warranty information.</p>
	<p>HOROW One-Piece Toilet Installation and User Manual</p> <p>Comprehensive installation and user manual for the HOROW One-Piece Toilet, detailing product features, step-by-step installation, care and cleaning instructions, troubleshooting common issues, and warranty information.</p>
	<p>HOROW Two-Piece Toilet Installation and User Manual Step-by-Step Guide</p> <p>Comprehensive installation and user guide for the HOROW Two-Piece Toilet. Includes detailed steps, parts list, care instructions, troubleshooting, and warranty information for safe and proper setup.</p>