

UpStart Components D7824706Q

UpStart Components D7824706Q Refrigerator Ice Maker Replacement Manual

Model: D7824706Q

INTRODUCTION

This manual provides instructions for the installation, operation, and maintenance of the UpStart Components D7824706Q Refrigerator Ice Maker replacement part. This ice maker is designed to be compatible with various refrigerator models, including Amana DRB2201CC (PDRB2201CC0) and is a compatible replacement for W10190978 icemakers.

It is crucial to verify compatibility with your specific appliance model before proceeding with installation. Refer to the specifications and compatibility list provided in this manual.

SAFETY INFORMATION

WARNING: Before attempting any installation or repair, always disconnect power to the refrigerator by unplugging it from the electrical outlet or turning off the circuit breaker. Failure to do so can result in electrical shock, serious injury, or death.

- Wear appropriate personal protective equipment, such as gloves, during installation.
- Ensure all connections are secure and properly insulated after installation.
- If you are unsure about any step, consult a qualified appliance technician.
- Keep children and pets away from the work area during installation.

PACKAGE CONTENTS

Verify that all components are present before beginning installation:

- 1 x D7824706Q Refrigerator Ice Maker Unit
- 2 x Wiring Harnesses (various lengths)
- 1 x Mounting Screw
- 1 x Mounting Bracket

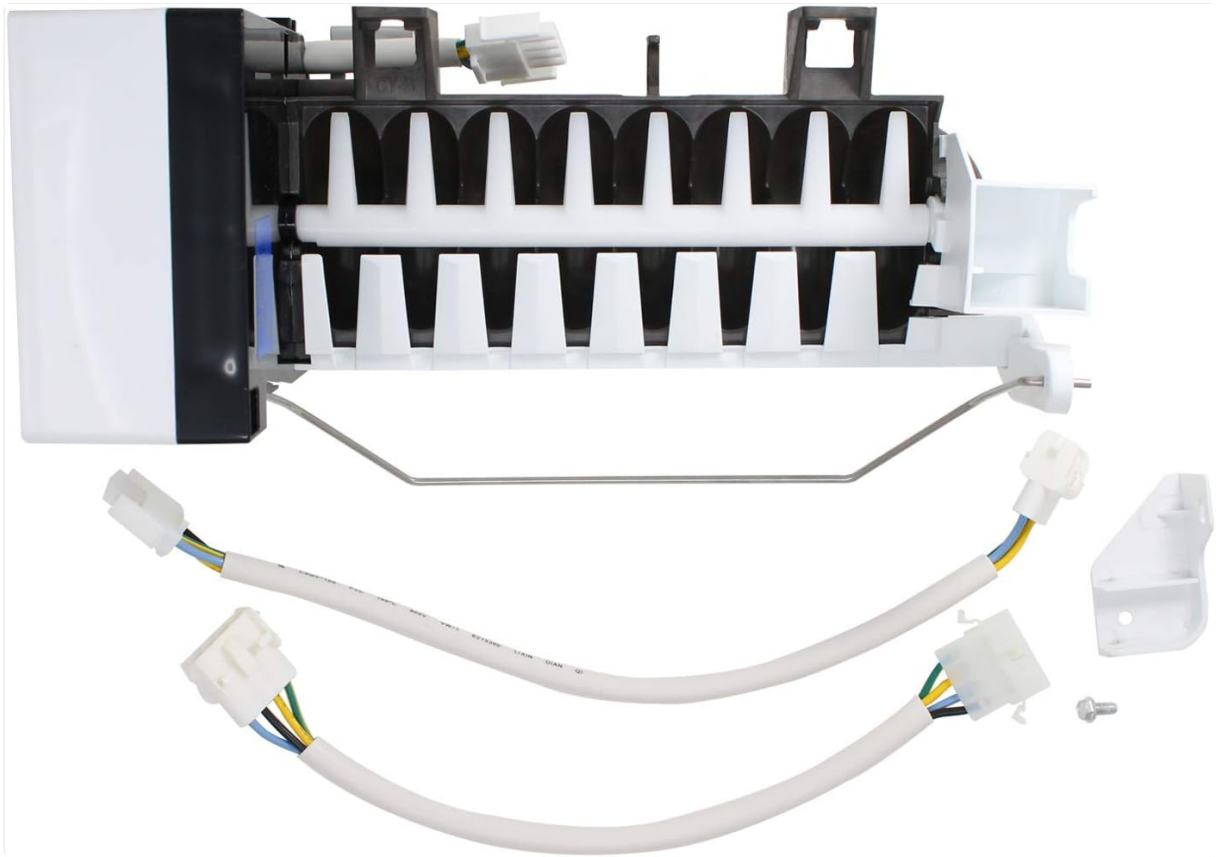


Image: The D7824706Q ice maker unit shown with its accompanying wiring harnesses, a small screw, and a white plastic mounting bracket.

SETUP AND INSTALLATION

This section outlines the general steps for replacing a refrigerator ice maker. Specific steps may vary slightly depending on your refrigerator model. Always refer to your refrigerator's service manual for detailed instructions.

1. **Disconnect Power:** Unplug the refrigerator from the wall outlet or turn off the circuit breaker supplying power to the refrigerator.
2. **Access the Ice Maker:** Open the freezer door and locate the existing ice maker. It is typically mounted on the side wall or ceiling of the freezer compartment.
3. **Remove Old Ice Maker:**
 - Remove any ice bucket or storage bins to gain clear access.
 - Disconnect the wiring harness from the old ice maker. This usually involves pressing a tab and pulling the connector apart.
 - Unscrew any mounting screws or release clips holding the old ice maker in place. Carefully remove the old unit.
4. **Prepare New Ice Maker:** If necessary, attach the provided mounting bracket to the new D7824706Q ice maker unit using the included screw.
5. **Install New Ice Maker:**
 - Position the new ice maker in the freezer compartment, aligning it with the mounting points.
 - Secure the new ice maker with the appropriate screws or clips. Ensure it is firmly in place.
 - Connect the wiring harness. Use one of the provided harnesses if the original connector does not match. Ensure the connection is secure.

6. **Restore Power:** Plug the refrigerator back into the electrical outlet or turn on the circuit breaker.
7. **Initial Check:** Listen for the water valve to fill the ice maker. This may take a few minutes. The ice maker will typically begin producing ice within 24 hours.



Image: Top view of the D7824706Q ice maker, illustrating the ice mold and the metal bail arm that controls ice production.

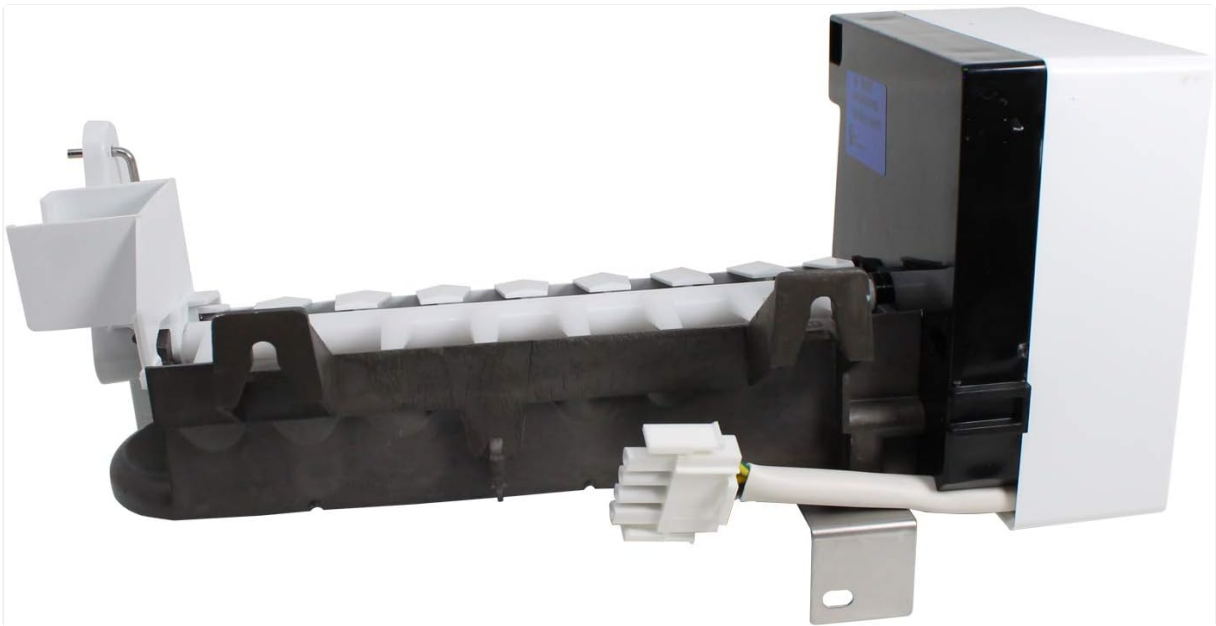


Image: Bottom view of the D7824706Q ice maker, highlighting the motor assembly and the main electrical connection point.



Image: Two white wiring harnesses with multi-pin connectors, used for connecting the ice maker to the refrigerator's electrical system.

OPERATING INSTRUCTIONS

Once installed and power is restored, the ice maker will automatically begin its cycle. It typically takes 12-24 hours for the first batch of ice to be produced and for the ice bin to fill completely.

- **Ice Production:** The ice maker will fill with water, freeze it, and then eject the ice cubes into the ice storage bin. This cycle repeats automatically.
- **Bail Arm:** The metal bail arm (or shut-off arm) controls ice production. When the ice bin is full, the bail arm will be pushed up by the ice, stopping further production. When ice is removed, the arm drops, and production resumes.
- **Initial Ice:** Discard the first few batches of ice, as they may contain impurities from the water line or new components.

MAINTENANCE

Regular maintenance helps ensure optimal performance and longevity of your ice maker.

- **Cleaning:** Periodically remove the ice bin and wash it with mild soap and warm water. Rinse thoroughly and dry before returning it to the freezer.
- **Water Filter:** If your refrigerator has a water filter, ensure it is replaced according to the manufacturer's recommendations to maintain water quality and ice production.
- **Check Water Line:** Occasionally inspect the water supply line for kinks, leaks, or blockages.
- **Frost Buildup:** If excessive frost builds up around the ice maker, it may indicate an issue with the freezer door seal or temperature settings.

TROUBLESHOOTING

If your ice maker is not functioning as expected, try these common troubleshooting steps:

Problem	Possible Cause	Solution
No ice production	Refrigerator not plugged in or power off Water supply turned off or kinked Bail arm in "off" (up) position Water filter clogged Freezer temperature too high	Check power connection and circuit breaker. Ensure water supply valve is open and line is not kinked. Lower the bail arm to the "on" (down) position. Replace water filter. Set freezer temperature to 0°F (-18°C) or lower.
Small or hollow ice cubes	Low water pressure Clogged water filter Partially blocked water fill tube	Check household water pressure. Replace water filter. Inspect and clear the water fill tube.
Ice tastes bad or has odor	Old ice in bin Food odors in freezer Water filter needs replacement	Discard old ice and clean ice bin. Store odorous foods in airtight containers. Replace water filter.

If these steps do not resolve the issue, it may indicate a more complex problem requiring professional

service.

SPECIFICATIONS

- **Model:** D7824706Q
- **Brand:** UpStart Components
- **Compatible with:** Amana DRB2201CC (PDRB2201CC0), W10190978 Icemaker, and other listed part numbers: AP4135008, 68111-1, 68972-1, 68972-4, 8170937, 915772, 95091-1, 95098-1, 95109-1, AH2121513, D7767601, D7824701, D7824702, D7824703, D7824704, D7824705, D7824705Q, D7824706, D7824706QVP, EA2121513, PS2121513, R0154025, R0156629, R0161059, R0161061, R0183135, R0194462, R0194462A, R0194666, R0950064, W10122519, Y0056504, Y0056599, Y0056606, Y0312578, Y0312738, Y0312740, Y689724, YR0161061.
- **Material:** Durable, high-quality components.

WARRANTY AND SUPPORT

This product is an UpStart Components brand replacement part. Any warranties for this product are offered solely by UpStart Components. This product is not affiliated with any original equipment manufacturer (OEM) brands and is not covered under any warranties offered by the original manufacturers. For support or warranty inquiries, please contact UpStart Components directly through their official channels.