

Manuals+

[Q & A](#) | [Deep Search](#) | [Upload](#)

[manuals.plus](#) /

› [NETVIP](#) /

› [NETVIP Bluetooth 5.0 2-in-1 Transmitter Receiver Audio Adapter User Manual CA-T10-LS1](#)

NETVIP CA-T10-LS1

NETVIP Bluetooth 5.0 2-in-1 Transmitter Receiver Audio Adapter User Manual

MODEL: CA-T10-LS1



Image: The NETVIP Bluetooth 5.0 2-in-1 Transmitter Receiver Audio Adapter, a compact black device with a USB-A connector on one end and a 3.5mm audio jack on a short cable on the other. A musical note symbol is visible on its body.

1. INTRODUCTION

This manual provides detailed instructions for the NETVIP Bluetooth 5.0 2-in-1 Transmitter Receiver Audio Adapter, Model CA-T10-LS1. This device allows you to add Bluetooth functionality to non-Bluetooth audio equipment, enabling wireless audio transmission or reception. Please read this manual thoroughly before use to ensure proper operation and to maximize your experience.

2. PRODUCT OVERVIEW

The NETVIP CA-T10-LS1 is a versatile audio adapter designed to bridge the gap between Bluetooth and non-Bluetooth devices. It operates in two primary modes: Transmitter (TX) and Receiver (RX), selectable with a single button press. It features Bluetooth 5.0 for stable connections and low latency audio.

Key Features:

- **2-in-1 Functionality:** Easily switch between Transmitter and Receiver modes.
- **Bluetooth 5.0:** Provides fast, stable, and low-latency wireless audio transmission.
- **Wide Compatibility:** Connects to various devices including TVs, PCs, car audio systems, speakers, and headphones.
- **Plug and Play:** No driver installation required for most operating systems.
- **USB Powered:** Draws power directly from a USB port.
- **Lossless Sound Quality:** Incorporates CVC noise reduction and DSP technology for clear audio.

3. PACKAGE CONTENTS

- NETVIP Bluetooth 5.0 2-in-1 Transmitter Receiver Audio Adapter (CA-T10-LS1)
- User Manual

Note: A 3.5mm audio cable is integrated into the device. No separate cable is included.

4. SETUP

4.1 Power Supply

The adapter requires power from a USB port. Connect the USB-A end of the adapter to any standard USB power source. This can include a USB power adapter, a power bank, a PC's USB port, or a car charger.

USB Power Supply

In use, this adapter must be powered by the USB port, such as USB power adapter, power bank, car charger, etc.



USB power adapter



Power bank



PC



Car charger

Image: A diagram illustrating various USB power sources for the adapter, including a USB power adapter, power bank, PC, and car charger, all connected to the adapter which is then connected to an audio source like a TV.

4.2 Connecting the Audio Cable

Plug the integrated 3.5mm audio jack into the audio output (for Transmitter mode) or audio input (for Receiver mode) of your desired device. Ensure both the USB and 3.5mm connections are secure.

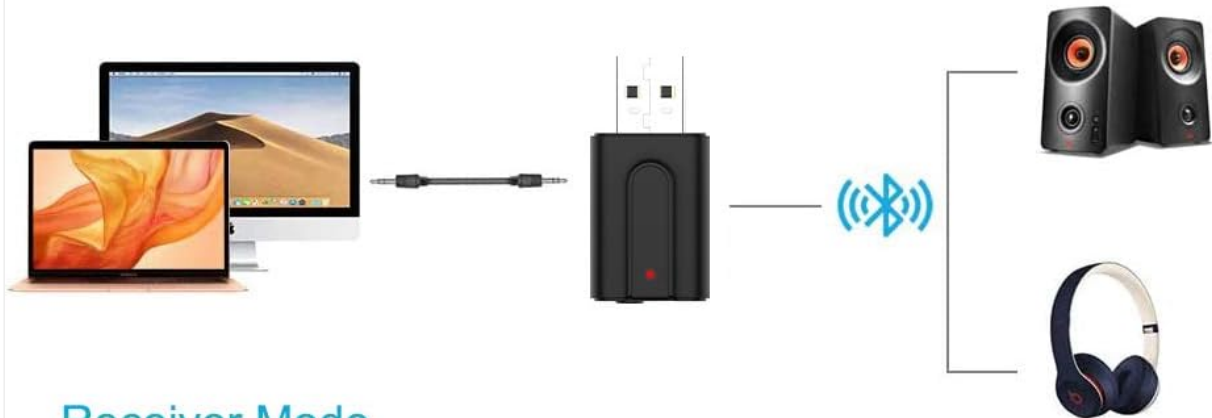
5. OPERATING MODES

The NETVIP CA-T10-LS1 supports two operating modes: Transmitter (TX) and Receiver (RX). You can switch between these modes with a single button press on the device.

2-in-1 USB Bluetooth Adapter

Transmitter Mode

Stream audio from non-Bluetooth TV, PC, CD player, home stereo system to your Bluetooth headphones or Bluetooth speakers.



Receiver Mode

Stream audio from Bluetooth-enabled phones, laptops, tablets to non-Bluetooth headsets/speakers.



Image: A diagram illustrating the two modes of the adapter. The top section shows Transmitter Mode (TX) with the adapter connected to a PC/TV and streaming to Bluetooth headphones/speakers. The bottom section shows Receiver Mode (RX) with the adapter receiving audio from a phone/laptop and outputting to non-Bluetooth headphones/speakers.

5.1 Transmitter Mode (TX)

In TX mode, the adapter transmits audio from a non-Bluetooth device to a Bluetooth-enabled receiving device (e.g., Bluetooth headphones or speakers).

1. **Connect:** Plug the USB end into a power source and the 3.5mm audio jack into the audio output port of your non-Bluetooth device (e.g., TV, PC, CD player).
2. **Switch Mode:** Ensure the adapter is in TX mode (indicated by a red LED, if applicable, or by pressing the button to cycle modes).
3. **Pair:** Put your Bluetooth headphones or speakers into pairing mode. The adapter will automatically search and connect.
4. **Enjoy:** Audio from your non-Bluetooth device will now stream wirelessly to your Bluetooth audio device.

Enjoy Real-time Audio with Low Latency



Image: A man relaxing on a couch, wearing Bluetooth headphones, watching TV. The NETVIP adapter is shown connected to the TV, transmitting audio wirelessly to his headphones, demonstrating low-latency audio in Transmitter mode.

Transmitter Mode

Enjoy personal game time



Image: A person enthusiastically playing a video game on a computer while wearing Bluetooth headphones. The NETVIP adapter is connected to the PC, indicating its use in Transmitter mode for personal gaming audio.

5.2 Receiver Mode (RX)

In RX mode, the adapter receives audio from a Bluetooth-enabled transmitting device (e.g., smartphone, laptop) and outputs it to a non-Bluetooth audio system (e.g., wired headphones, car stereo, home speakers).

1. **Connect:** Plug the USB end into a power source and the 3.5mm audio jack into the audio input port of your non-Bluetooth audio system (e.g., AUX-in on a car stereo, speaker input).
2. **Switch Mode:** Ensure the adapter is in RX mode (indicated by a blue LED, if applicable, or by pressing the button to cycle modes).
3. **Pair:** Enable Bluetooth on your smartphone or other transmitting device and search for the adapter (usually appears as "CA-T10-LS1" or similar). Select it to pair.
4. **Enjoy:** Audio from your Bluetooth device will now play through your non-Bluetooth audio system.

Receiver Mode

Enjoy wireless music

Better sound quality when charging with USB power adapter



Image: A smartphone displaying a music player interface, wirelessly streaming music to a non-Bluetooth speaker via the NETVIP adapter. The adapter is powered by a USB power strip, demonstrating its use in Receiver mode for wireless music playback.

Receiver Mode

Enjoy music time on the road (can't be used to answer calls)

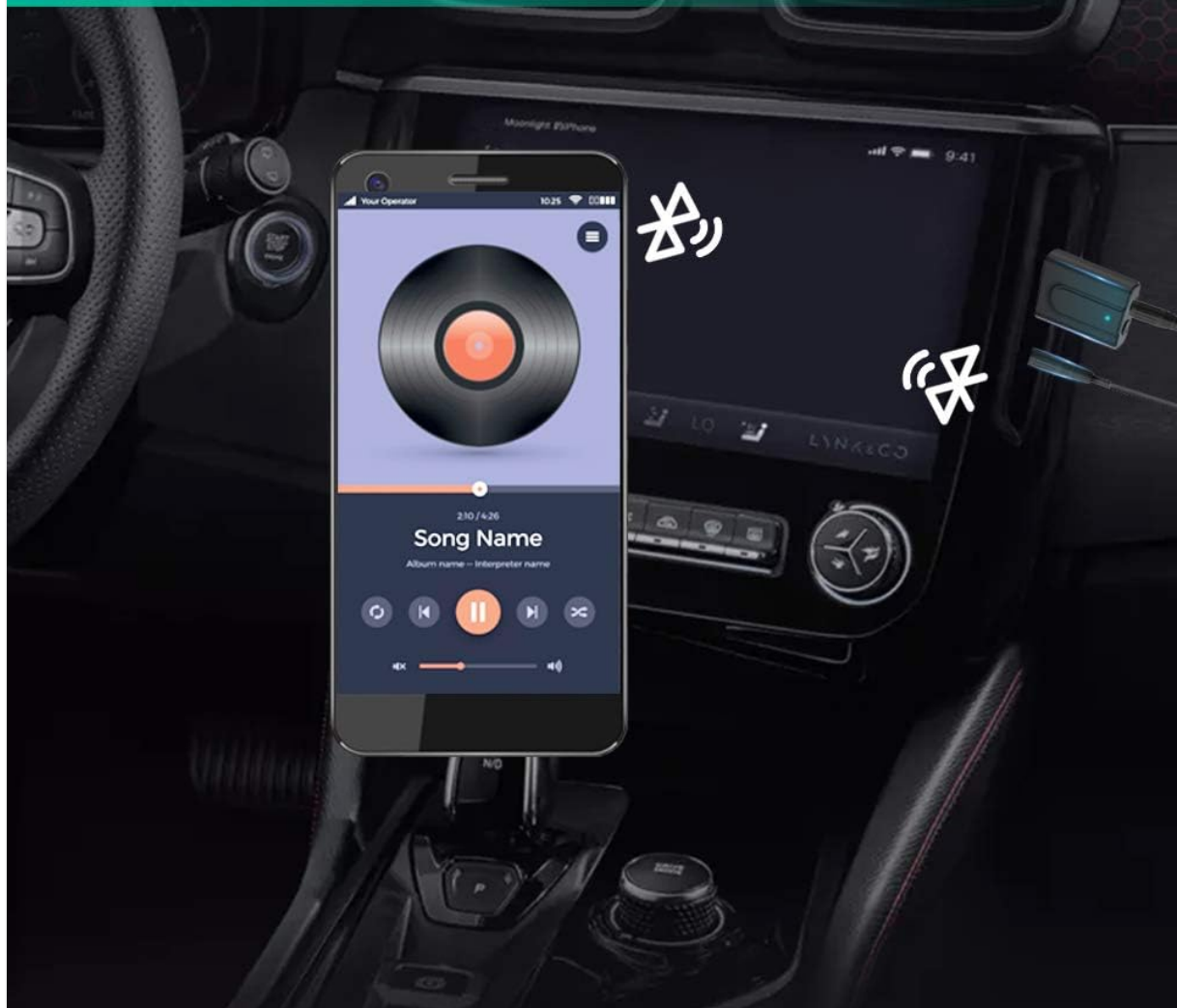


Image: A smartphone mounted in a car, displaying a music player. Bluetooth signals are shown connecting the phone to the NETVIP adapter, which is plugged into the car's audio system, illustrating Receiver mode for in-car music streaming.

6. BLUETOOTH PAIRING

The adapter is designed for easy pairing. Once powered on and in the correct mode (TX or RX), it will automatically enter pairing mode.

- **Initial Pairing:** After connecting the adapter and selecting the desired mode, the LED indicator will flash, signifying it is in pairing mode.
- **Connect Device:** On your Bluetooth audio device (for TX mode) or smartphone/laptop (for RX mode), search for available Bluetooth devices. Select "CA-T10-LS1" or a similar name to connect.
- **Successful Connection:** The LED indicator will typically turn solid (blue for RX, red for TX) once a connection is established.
- **Re-pairing:** If you need to pair with a new device, quickly press the button on the adapter to re-enter pairing mode.

Bluetooth 5.0, Strong Compatibility



Image: A circular diagram illustrating the broad compatibility of the NETVIP Bluetooth 5.0 adapter. Devices such as TV, laptop, PC, MP3/4 players, amplifiers, wired headsets, car stereos, game consoles, speakers, and cell phones are shown connected to the central adapter, highlighting its versatility.

7. TROUBLESHOOTING

Issue	Possible Solution
No power/LED not lighting up	Ensure the USB connector is fully inserted into a working USB power source. Try a different USB port or power adapter.
Cannot pair with device	<ul style="list-style-type: none">• Ensure the adapter is in the correct TX/RX mode.• Make sure your target Bluetooth device is in pairing mode.• Turn off Bluetooth on other nearby devices to avoid interference.• Unplug and replug the adapter, then try pairing again.• Ensure the adapter is within the 33ft (10m) range of the target device.

Issue	Possible Solution
No audio or poor sound quality	<ul style="list-style-type: none">• Verify the 3.5mm audio jack is fully inserted into both the adapter and the audio source/destination.• Check the volume levels on both the source and receiving devices.• Ensure the adapter is in the correct TX/RX mode for your setup.• Reduce the distance between the adapter and the paired device.• Check for sources of interference (e.g., Wi-Fi routers, other Bluetooth devices).• If using RX mode, ensure the audio output from your phone/laptop is set to Bluetooth.
Adapter disconnects frequently	<ul style="list-style-type: none">• Ensure the adapter is within range and there are no major obstructions.• Check for strong interference sources.• Try re-pairing the devices.

8. SPECIFICATIONS

Feature	Detail
Model	CA-T10-LS1
Bluetooth Version	5.0
Operating Modes	Transmitter (TX), Receiver (RX)
Connectivity Technology	Bluetooth
Hardware Interface	USB, 3.5mm Audio Jack
Power Source	USB Port
Audio Output Mode	Stereo
Compatible Devices	Personal Computer, Smartphone, Speaker, Television, Car Audio Systems, Wired Headphones
Product Dimensions	2.1 x 4.3 x 1.1 cm
Weight	20 g


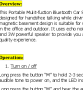



9. MAINTENANCE

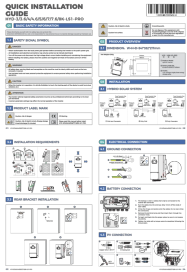
- Keep the device dry. Moisture can damage the internal circuits.
- Do not expose the device to extreme temperatures.
- Clean the device with a soft, dry cloth. Do not use harsh chemicals or detergents.
- Avoid dropping or subjecting the device to strong impacts.

10. WARRANTY AND SUPPORT

NETVIP products are designed for reliability and performance. For warranty information or technical support, please refer to the contact details provided with your purchase documentation or visit the official NETVIP website. Please retain your proof of purchase for warranty claims.

Related Documents - CA-T10-LS1

 <p>NETVIP WiFi Adapter Driver Download and Support</p> <p>Find the driver download link for the NETVIP 4605 WiFi Adapter. Learn about NETVIP's range of WiFi devices and customer support options.</p>	<p>NETVIP WiFi Adapter Driver Download and Support</p> <p>Find the driver download link for the NETVIP 4605 WiFi Adapter. Learn about NETVIP's range of WiFi devices and customer support options.</p>
 <p>T826 Bluetooth Car Speaker User Manual</p> <p>User manual for the T826 Portable Multifunction Bluetooth Car Speakerphone, detailing its features, operation, specifications, maintenance, and safety guidelines.</p>	<p>T826 Bluetooth Car Speaker User Manual</p> <p>User manual for the T826 Portable Multifunction Bluetooth Car Speakerphone, detailing its features, operation, specifications, maintenance, and safety guidelines.</p>
 <p>NETVIP 519 WiFi Extender User Manual</p> <p>A concise user manual for the NETVIP 519 WiFi Extender, detailing setup instructions for Repeater Mode and Access Point Mode. Includes step-by-step guidance, image descriptions, and video references for easy installation and operation.</p>	<p>NETVIP 519 WiFi Extender User Manual: Setup Guide</p> <p>A concise user manual for the NETVIP 519 WiFi Extender, detailing setup instructions for Repeater Mode and Access Point Mode. Includes step-by-step guidance, image descriptions, and video references for easy installation and operation.</p>
 <p>CleanAIR Light Hoods User Manual</p> <p>User manual for CleanAIR Light hoods, detailing introduction, limitations, cleaning, maintenance, materials, storage, warranty, product listings, spare parts, approved combinations, and approvals.</p>	<p>CleanAIR Light Hoods User Manual</p> <p>User manual for CleanAIR Light hoods, detailing introduction, limitations, cleaning, maintenance, materials, storage, warranty, product listings, spare parts, approved combinations, and approvals.</p>
 <p>Eaton IQ Products</p> <p>Comprehensive catalog detailing Eaton's IQ Products line, featuring power meters, protective relays, and accessories for electrical distribution systems. Includes product specifications, selection guides, and replacement information.</p>	<p>Eaton IQ Products Catalog: Power Management and Electrical Protection Solutions</p> <p>Comprehensive catalog detailing Eaton's IQ Products line, featuring power meters, protective relays, and accessories for electrical distribution systems. Includes product specifications, selection guides, and replacement information.</p>



[SOFARSOLAR HYD-LS1-PRO Series Hybrid Inverter Quick Installation Guide](#)

Concise guide for installing the SOFARSOLAR HYD-3K to 8K LS1-PRO series hybrid solar energy storage inverters. Covers safety, overview, electrical connections, and commissioning.