

## MÜLLER LICHT 4018412344366

# MÜLLER LICHT Canea 60cm LED Mirror Light 17W 4000K IP44 User Manual

Model: 4018412344366

---

## 1. INTRODUCTION

---

Thank you for choosing the MÜLLER LICHT Canea 60cm LED Mirror Light. This manual provides essential information for the safe installation, operation, and maintenance of your new LED mirror light. Please read these instructions carefully before installation and keep them for future reference.

This LED mirror light is designed for indoor use, particularly suitable for bathrooms due to its IP44 splash protection rating. It provides a neutral white light at 4000K with a power consumption of 17 Watts.

## 2. SAFETY INSTRUCTIONS

---

- **Electrical Safety:** Installation must be performed by a qualified electrician in accordance with all local and national electrical codes. Ensure the main power supply is switched off before commencing any installation or maintenance work.
- **Voltage:** This product operates on standard household voltage. Verify your local voltage matches the product's requirements.
- **Water Protection (IP44):** The fixture is rated IP44, meaning it is protected against solid objects larger than 1mm and against splashing water from any direction. It is suitable for use in bathroom zones 2 and 3. Do not immerse in water.
- **Handling:** Handle the product with care to avoid damage. Do not drop or subject it to strong impacts.
- **Cleaning:** Disconnect power before cleaning. Use a soft, dry or slightly damp cloth. Do not use abrasive cleaners or solvents.
- **Disposal:** Dispose of the product and its components responsibly, in accordance with local regulations for electronic waste.

## 3. PACKAGE CONTENTS

---

Please check that all components are present and undamaged before installation. The package should

contain:

- MÜLLER LICHT Canea 60cm LED Mirror Light fixture
- Mounting hardware (screws, wall plugs)
- Instruction manual (this document)

If any parts are missing or damaged, please contact your retailer.

## 4. SPECIFICATIONS

<b>Brand:</b>	MÜLLER LICHT
<b>Model Number:</b>	4018412344366
<b>Product Dimensions (L x W x H):</b>	19 x 25 x 19 cm (Note: This dimension seems to refer to packaging or a different product, as the light itself is 60cm long.)
<b>Weight:</b>	7 kilograms (Note: This weight seems high for a 60cm LED light, likely packaging or a different product.)
<b>Material:</b>	Plastic
<b>Power Source:</b>	Electric Cable
<b>Light Source Type:</b>	LED
<b>Number of Light Sources:</b>	1
<b>Power Consumption:</b>	17 Watts
<b>Color Temperature:</b>	4000K (Neutral White)
<b>Mounting Type:</b>	Wall Mount
<b>Ingress Protection (IP) Rating:</b>	IP44 (Splash-proof)
<b>Assembly Required:</b>	Yes

*Note: Some product dimensions and weight listed in the source data may refer to packaging or shipping specifications rather than the fixture itself. The 60cm refers to the length of the light.*

## 5. SETUP AND INSTALLATION

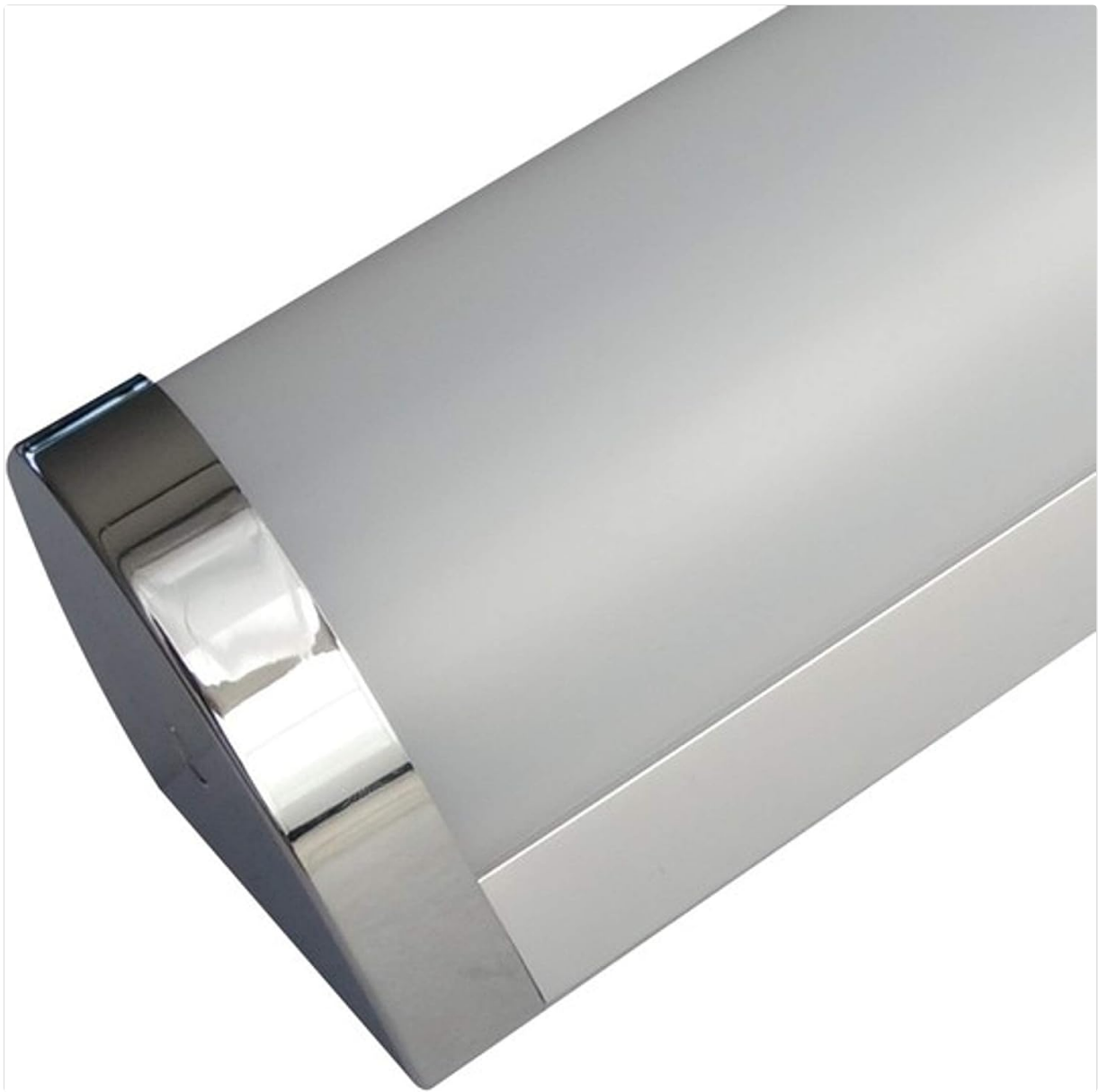
**Important:** Ensure the main power supply is disconnected at the circuit breaker before starting installation to prevent electric shock.

1. **Preparation:** Unpack the fixture and check for any damage. Ensure all necessary tools (drill, screwdriver, wire strippers, etc.) are available.
2. **Choose Location:** Select a suitable wall location, typically above a mirror, ensuring it is within reach of existing electrical wiring. Consider the IP44 rating for bathroom zones.
3. **Marking:** Hold the mounting bracket (if separate) or the fixture itself against the wall at the desired height and mark the drilling points with a pencil.
4. **Drilling:** Drill holes at the marked points. Insert appropriate wall plugs into the drilled holes.

5. **Mounting Bracket (if applicable):** Secure the mounting bracket to the wall using the provided screws.
6. **Electrical Connection:**
  - Carefully connect the electrical wires from the wall to the corresponding terminals on the fixture.  
Typically:
    - Live (L) wire (usually brown or black) to the 'L' terminal.
    - Neutral (N) wire (usually blue) to the 'N' terminal.
    - Earth (Ground) wire (usually green/yellow) to the 'E' or earth symbol terminal.
  - Ensure all connections are secure and insulated.
7. **Attach Fixture:** Secure the LED mirror light fixture to the mounting bracket or directly to the wall, ensuring it is firmly in place.
8. **Test:** Once installation is complete, restore power at the circuit breaker and test the light.



**Figure 1:** Front view of the MÜLLER LICHT Canea 60cm LED Mirror Light. This image shows the full length of the light fixture, highlighting its sleek design and frosted diffuser.



**Figure 2:** Close-up view of the end cap of the MÜLLER LICHT Canea LED Mirror Light. This detail shows the metallic finish of the end cap and the frosted light diffuser.

## 6. OPERATING INSTRUCTIONS

---

The MÜLLER LICHT Canea LED Mirror Light is designed for simple operation.

- **Power On/Off:** The light is controlled by an external wall switch connected to its electrical supply. Flip the wall switch to turn the light on or off.
- **No Dimming:** This fixture is not designed for dimming unless explicitly stated on the packaging or product. Attempting to use it with a dimmer switch may cause damage or malfunction.

## 7. MAINTENANCE

---

Regular maintenance ensures the longevity and optimal performance of your LED mirror light.

- **Cleaning:**
  - Always disconnect the power supply before cleaning.
  - Wipe the exterior surfaces with a soft, dry, or slightly damp cloth.
  - Do not use harsh chemicals, abrasive cleaners, or scouring pads, as these can damage the finish or

the plastic diffuser.

- **LEDs:** The integrated LED light source is designed for a long lifespan and is not user-replaceable. Do not attempt to open the fixture to replace LEDs.

## 8. TROUBLESHOOTING

---

If you encounter issues with your LED mirror light, refer to the following common problems and solutions:

Problem	Possible Cause / Solution
Light does not turn on.	<ul style="list-style-type: none"><li>• Check if the wall switch is in the "ON" position.</li><li>• Verify that the circuit breaker for the light fixture is not tripped.</li><li>• Ensure electrical connections are secure (consult a qualified electrician if unsure).</li><li>• Confirm power is supplied to the fixture.</li></ul>
Light flickers or is dim.	<ul style="list-style-type: none"><li>• Ensure the fixture is not connected to a dimmer switch, unless it is explicitly rated for dimming.</li><li>• Check for loose electrical connections.</li><li>• Voltage fluctuations in your electrical supply.</li></ul>
Physical damage to the fixture.	<ul style="list-style-type: none"><li>• If the fixture is physically damaged, discontinue use immediately.</li><li>• Contact customer support or your retailer for assistance.</li></ul>

If the problem persists after attempting these solutions, please contact customer support.

## 9. WARRANTY AND SUPPORT

---

MÜLLER LICHT products are manufactured to high-quality standards. For information regarding warranty terms and conditions, please refer to the documentation provided with your purchase or visit the official MÜLLER LICHT website.

For technical support, replacement parts, or further assistance, please contact your retailer or MÜLLER LICHT customer service. When contacting support, please have your model number (4018412344366) and proof of purchase readily available.