

[Manuals.plus](#) /

› [MICHELIN](#) /

› Michelin MPX17EH 1700W 130 Bar Professional Pressure Washer User Manual

MICHELIN MPX17EH

Michelin MPX17EH 1700W 130 Bar Professional Pressure Washer User Manual

1. INTRODUCTION

This manual provides essential information for the safe and effective use of your Michelin MPX17EH 1700W 130 Bar Professional Pressure Washer. Please read these instructions carefully before assembly, operation, or maintenance. Retain this manual for future reference.

2. SAFETY INFORMATION

Always observe basic safety precautions to reduce the risk of fire, electric shock, and personal injury. Failure to follow these instructions may result in serious injury or damage to the product.

- **Electrical Safety:** Ensure the power supply matches the voltage specified on the pressure washer. Always use a grounded outlet and avoid using extension cords unless absolutely necessary and rated for outdoor use.
- **Water Connection:** Connect the pressure washer to a cold water supply only. Do not use with hot water. Ensure all connections are secure to prevent leaks.
- **Personal Protective Equipment:** Always wear appropriate eye protection (safety glasses) and protective clothing when operating the pressure washer.
- **Operating Environment:** Do not operate the pressure washer in explosive atmospheres, such as in the presence of flammable liquids, gases, or dust.
- **Children and Pets:** Keep children and pets away from the operating area.
- **Nozzle Safety:** Never direct the high-pressure spray at people, animals, electrical devices, or the unit itself.
- **Maintenance:** Disconnect the power supply before performing any maintenance or cleaning.

3. PRODUCT OVERVIEW

The Michelin MPX17EH is a professional-grade pressure washer designed for effective cleaning tasks. Familiarize yourself with its components before use.



Image: The Michelin MPX17EH pressure washer unit, featuring a hose reel, spray gun, and detergent bottle.

Key Components:

- **Main Unit:** Houses the motor, pump, and electrical components.
- **High-Pressure Hose:** Connects the main unit to the spray gun.
- **Spray Gun:** Controls the water flow and pressure.
- **Adjustable Nozzle:** Allows for varying spray patterns.
- **Rotary Nozzle:** Provides a powerful, concentrated spray for stubborn dirt.
- **Detergent Bottle/Foam Cannon:** For applying cleaning solutions.
- **Water Inlet Connector:** For connecting the garden hose.
- **Power Cord:** For electrical connection.
- **Hose Reel:** For convenient storage of the high-pressure hose.

4. SETUP

Follow these steps to prepare your pressure washer for first use:

1. **Unpack Components:** Carefully remove all parts from the packaging and ensure all components listed in the manual are present.
2. **Assemble Handle (if required):** Attach the handle to the main unit according to the diagrams in your specific product manual.

3. **Connect High-Pressure Hose:** Securely connect one end of the high-pressure hose to the outlet on the pressure washer unit and the other end to the spray gun.
4. **Connect Water Supply:** Attach a standard garden hose to the water inlet connector on the pressure washer. Ensure the garden hose is free of kinks and has an adequate water supply. Turn on the water tap fully.
5. **Purge Air:** Before connecting to power, squeeze the trigger on the spray gun to allow water to flow through the system and purge any air. Continue until a steady stream of water emerges.
6. **Connect Power:** Plug the power cord into a grounded electrical outlet.



Image: The pressure washer unit displayed with its included accessories, ready for connection.

5. OPERATING INSTRUCTIONS

Once the unit is set up, follow these steps for operation:

1. **Start the Unit:** Turn the ON/OFF switch to the 'ON' position. The motor will start briefly and then stop, indicating it is primed and ready.
2. **Engage Spray Gun:** Point the spray gun at the cleaning surface, ensuring it is a safe distance away. Squeeze the trigger to begin spraying. The motor will restart and maintain pressure.
3. **Adjust Nozzle:** Rotate the adjustable nozzle to change the spray pattern from a narrow, powerful stream to a wider, gentler fan spray, depending on the cleaning task. For tough spots, use the rotary nozzle.
4. **Apply Detergent (Optional):** If using detergent, fill the detergent bottle with appropriate pressure washer detergent. Attach the bottle to the spray gun or designated detergent inlet. Operate the pressure washer at low pressure (usually achieved by a specific nozzle or setting) to draw and apply detergent.
5. **Rinse:** After applying detergent, switch to a high-pressure setting or nozzle to rinse the surface thoroughly.
6. **Shut Down:** When finished, turn the ON/OFF switch to 'OFF'. Turn off the water supply. Squeeze the spray gun trigger to release any remaining pressure in the system.



Image: A person operating the Michelin MPX17EH pressure washer to clean a patio surface.



Image: The pressure washer being used to clean a car, demonstrating its application for vehicle washing.

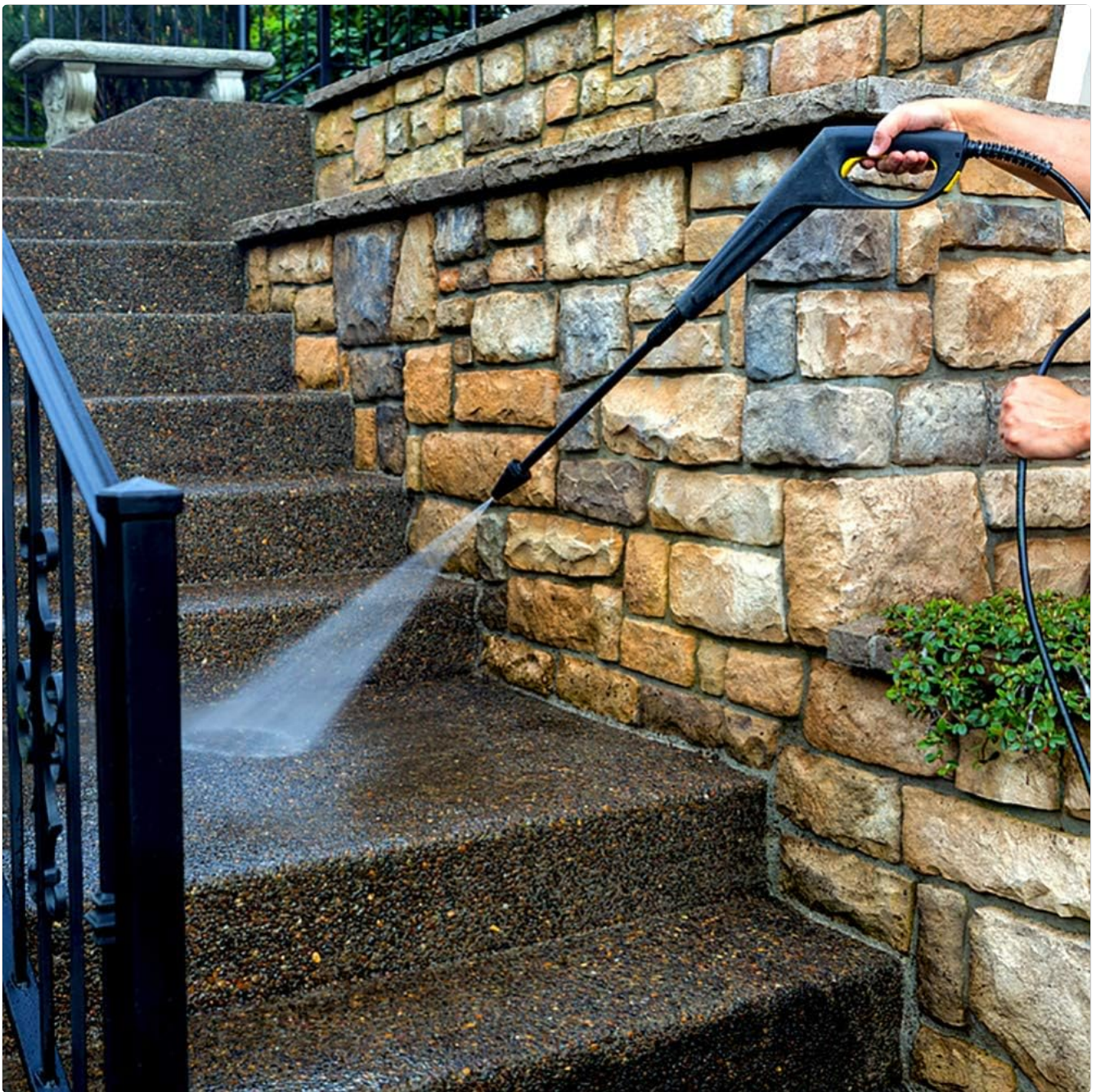


Image: An individual cleaning outdoor stairs with the Michelin MPX17EH pressure washer, highlighting its versatility.

6. MAINTENANCE

Regular maintenance ensures optimal performance and extends the life of your pressure washer.

- **Clean Nozzles:** Periodically check nozzles for blockages. Use the provided nozzle cleaning tool to clear any debris.
- **Inspect Hoses and Connections:** Before each use, inspect the high-pressure hose, garden hose, and all connections for wear, damage, or leaks. Replace damaged parts immediately.
- **Clean Water Inlet Filter:** The water inlet connector typically contains a filter to prevent debris from entering the pump. Clean this filter regularly.
- **Winter Storage:** If storing the pressure washer in an area where temperatures may drop below freezing, drain all water from the pump and hoses to prevent damage. Consider using a pump protector solution.
- **General Cleaning:** Wipe down the exterior of the unit with a damp cloth. Do not use harsh chemicals.

7. TROUBLESHOOTING

Refer to the table below for common issues and their solutions.

Problem	Possible Cause	Solution
Unit does not start	No power supply; Faulty outlet; Thermal overload activated.	Check power cord and outlet; Reset circuit breaker; Allow unit to cool down.
Low or no pressure	Insufficient water supply; Air in pump; Clogged nozzle; Kinked hose.	Ensure water tap is fully open; Purge air from system; Clean nozzle; Straighten hose.
Water leaks	Loose connections; Damaged O-rings or seals.	Tighten all connections; Inspect and replace worn O-rings or seals.
Motor runs continuously	Air in pump; Internal leak; Trigger not fully released.	Purge air from system; Check for leaks; Ensure trigger is fully released.

8. SPECIFICATIONS

Technical details for the Michelin MPX17EH pressure washer:

Model Number	MPX17EH
Brand	MICHELIN
Power Source	Corded Electric
Product Weight	12.44 Kilograms
Hose Length	6 Meters
Tank Volume	440 Liters
Maximum Pressure	130 Bar
Manufacturer	MICHELIN

9. WARRANTY AND SUPPORT

Your Michelin MPX17EH pressure washer comes with a **2-year warranty** from the date of purchase, covering manufacturing defects. Please retain your proof of purchase for warranty claims.

For technical assistance, spare parts, or warranty inquiries, please contact your authorized Michelin service center or the retailer where the product was purchased. Refer to the product packaging or the official Michelin website for contact details.

