

JALL B085TM82

JALL 4-inch Analog Alarm Clock Instruction Manual

Model: B085TM82

INTRODUCTION

This manual provides comprehensive instructions for the setup, operation, and maintenance of your JALL 4-inch Analog Alarm Clock. Designed for simplicity and reliability, this clock features a silent, non-ticking movement, a gentle night light, and is powered by a single AA battery. Please read these instructions carefully to ensure optimal performance and longevity of your device.



Image: Front view of the JALL 4-inch Analog Alarm Clock in green.

PRODUCT FEATURES

- **High Quality Simple Design:** Constructed from durable materials, this clock is designed for longevity and ease of use.
- **Super Silent Hand:** The sweep second hand operates without any ticking noise, ensuring a quiet environment for sleep or work.
- **Simple Alarm Function:** A loud alarm will sound for up to 30 minutes to ensure you wake up. An easy-to-use ON/OFF button controls the alarm.
- **Night Light Function:** Pressing the night light button illuminates the clock face with a soft yellow light, making it easy to read the time in darkness without straining your eyes.
- **Battery Operated:** The clock requires one AA battery for operation, making it portable and suitable for various locations.

Silent Non-Ticking

Never disturb every sleep



Comfortable
Alarm Volume



Image: A baby sleeping next to the JALL alarm clock, illustrating its silent operation.

Old Fashioned Style

Old fashioned style room decoration



Image: The JALL alarm clock with its warm night light illuminated, highlighting the night light button on the back.

PACKAGE CONTENTS

- 1 x JALL 4-inch Analog Alarm Clock
- 1 x Instruction Manual

Note: AA battery is not included and must be purchased separately.

SETUP

Before using your JALL alarm clock, please follow these steps:

Simple Function

Easy to set up

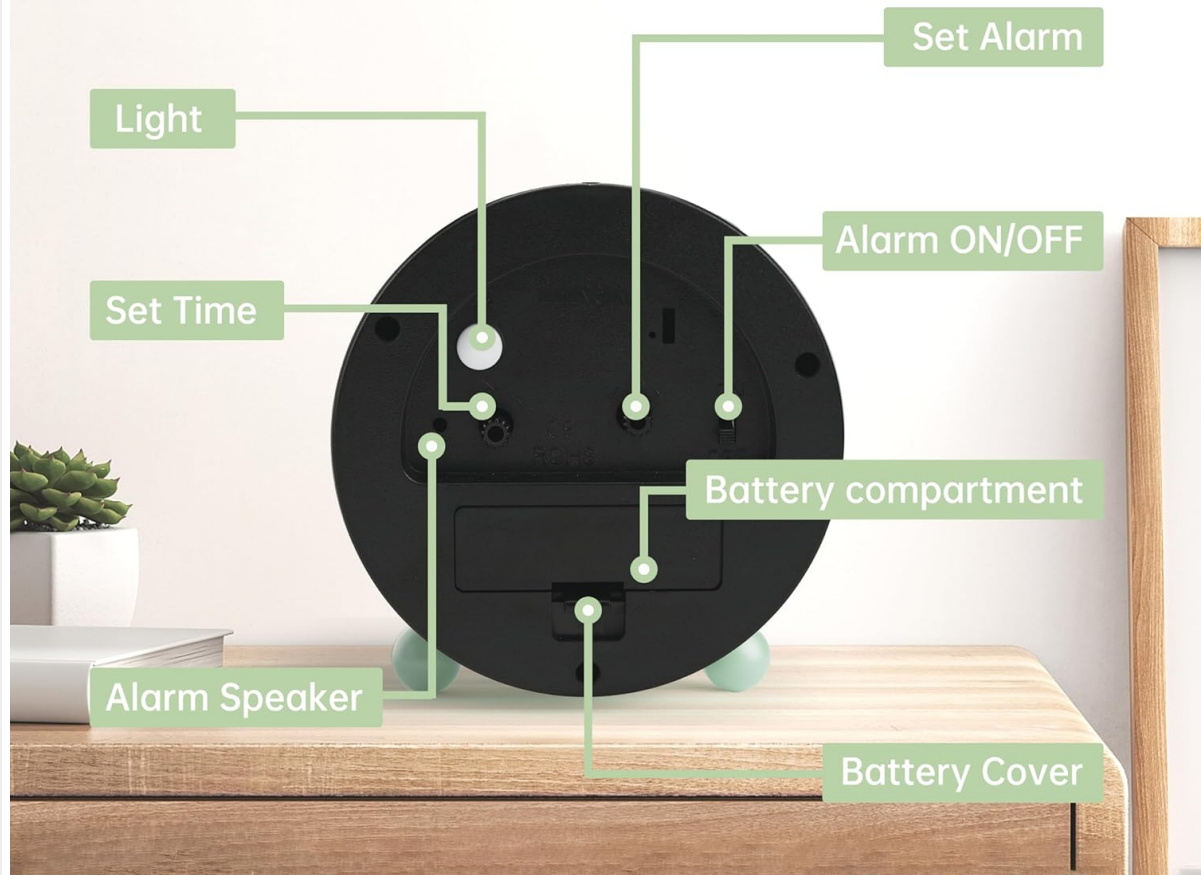


Image: Rear view of the JALL alarm clock with labeled controls.

1. **Install Battery:** Open the battery compartment cover on the back of the clock. Insert one AA battery, ensuring the polarity (+/-) matches the diagram inside the compartment. Close the cover securely.
2. **Set Time:** Locate the 'Set Time' knob on the back of the clock. Rotate this knob clockwise or counter-clockwise until the hour and minute hands display the correct current time.
3. **Set Alarm:** Locate the 'Set Alarm' knob on the back of the clock. Rotate this knob to align the alarm hand with your desired wake-up time.

OPERATING INSTRUCTIONS

1. **Activate/Deactivate Alarm:** Use the 'Alarm ON/OFF' switch on the back of the clock. Slide the switch to 'ON' to enable the alarm, and to 'OFF' to disable it.
2. **Use Night Light:** Press and hold the 'Light' button on the back of the clock to illuminate the clock face. Release the button to turn off the light. This feature is designed for temporary illumination in dark conditions.

MAINTENANCE

- **Battery Replacement:** Replace the AA battery approximately once a year, or when the clock hands begin to

slow down or the alarm sound weakens. Always use a fresh, high-quality AA battery.

- **Cleaning:** Wipe the clock with a soft, dry cloth. Avoid using abrasive cleaners or solvents, as these may damage the finish.
- **Storage:** If the clock will not be used for an extended period, remove the battery to prevent leakage and potential damage.

TROUBLESHOOTING

Problem	Possible Cause	Solution
Clock not keeping time or stopping	Low or dead battery; improperly installed battery.	Replace with a new AA battery, ensuring correct polarity.
Alarm not sounding	Alarm switch is OFF; alarm time not set correctly; low battery.	Ensure 'Alarm ON/OFF' switch is in the 'ON' position. Verify alarm hand is set to the desired time. Replace battery if needed.
Night light not working	Low or dead battery.	Replace with a new AA battery.

SPECIFICATIONS

- Brand:** JALL
- Model:** B085TM82
- Display Type:** Analog
- Power Source:** 1 x AA Battery (not included)
- Special Features:** Silent Clock, Alarm, Night Light
- Material:** Metal
- Product Dimensions:** 4.25"W x 4.25"H (approximately 10.8 cm x 10.8 cm)
- Item Weight:** 8.8 ounces (approximately 249 grams)

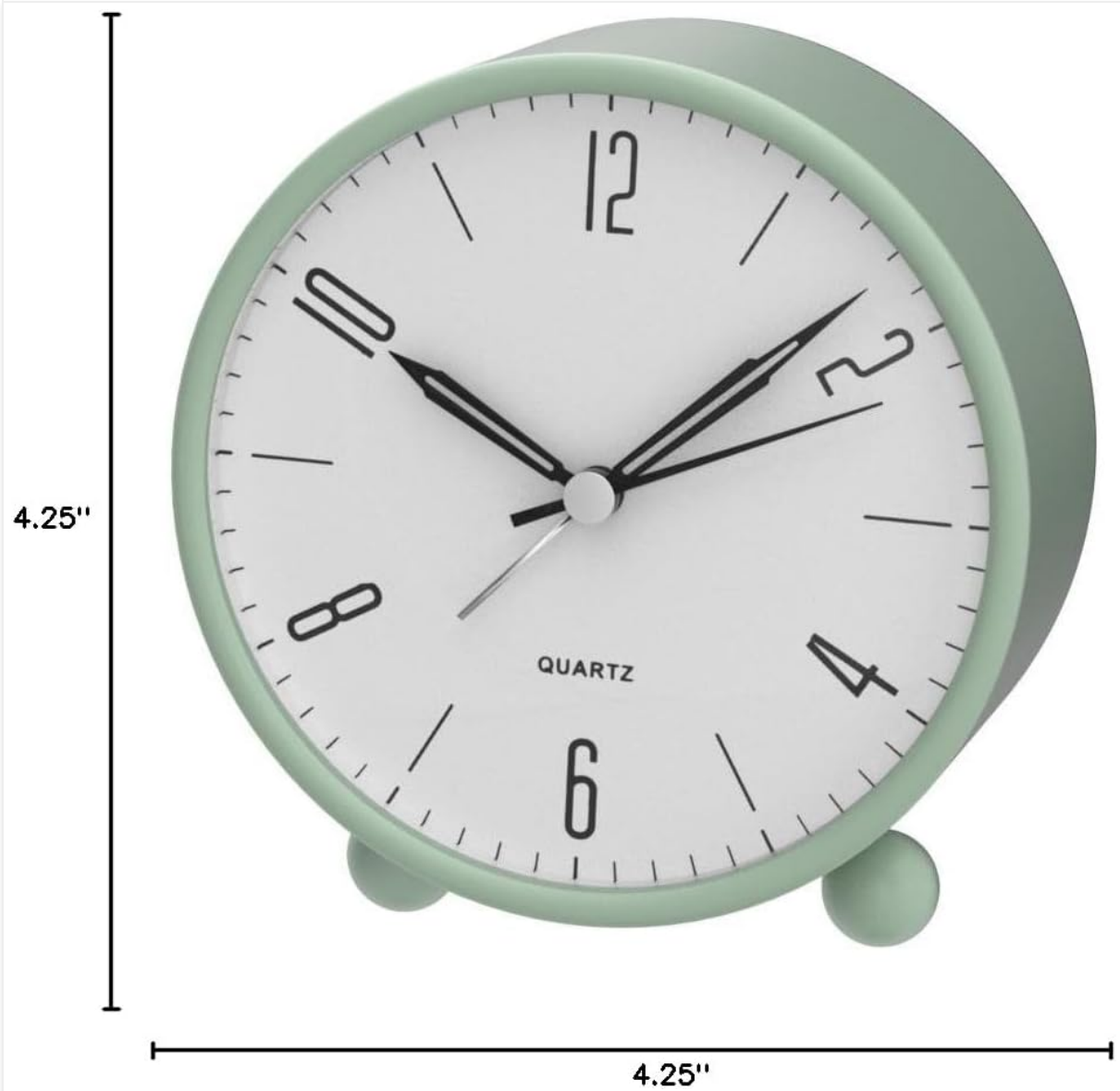



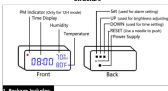
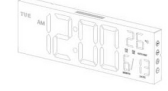
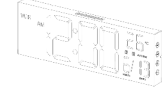


Image: Dimensional diagram of the JALL alarm clock.

WARRANTY AND SUPPORT

JALL provides a **365-Day warranty** on products sold. For any questions, concerns, or warranty claims, please contact JALL customer support through the official JALL Store on Amazon or refer to the contact information provided with your purchase.

Visit the [JALL Store](#) for more information and support.

Related Documents - B085TM82

<p>RGB Night Light Alarm Clock Instructions</p> <p>We understand customer satisfaction is providing a different unique solution in each and every one of them. To achieve this, we assure you that we will do our best.</p> <p>Any questions about the alarm clock, please feel free to contact us: ThreeDucksDirect@outlook.com</p> <p>Front</p> <p>1 Time Display 2 Alarm Indicator 3 Alarm Indicator 4 Alarm Indicator</p>  <p>5 Alarm Indicator 6 Time Display - Alarm Indicator 7 Alarm Indicator - Alarm Indicator 8 Alarm Indicator - Alarm Indicator 9 Alarm Indicator - Alarm Indicator 10 Alarm Indicator - Alarm Indicator 11 Alarm Indicator - Alarm Indicator 12 Alarm Indicator - Alarm Indicator</p> <p>1/4</p>	<p>RGB Night Light Alarm Clock Instructions and User Manual</p> <p>Comprehensive instructions and user manual for the RGB Night Light Alarm Clock, covering setup, features, alarm settings, nightlight options, display adjustments, and troubleshooting.</p>
<p>V1502 Alarm Clock Instructions</p> <p>Missing accessories or any other problem, please contact us: ThreeDucksDirect@outlook.com</p> <p>Structure</p>  <p>Features</p> <p>1 Time Display - Alarm Indicator 2 Alarm Indicator - Alarm Indicator 3 Alarm Indicator - Alarm Indicator 4 Alarm Indicator - Alarm Indicator 5 Alarm Indicator - Alarm Indicator 6 Alarm Indicator - Alarm Indicator 7 Alarm Indicator - Alarm Indicator 8 Alarm Indicator - Alarm Indicator 9 Alarm Indicator - Alarm Indicator 10 Alarm Indicator - Alarm Indicator 11 Alarm Indicator - Alarm Indicator 12 Alarm Indicator - Alarm Indicator</p> <p>1/4</p>	<p>JALL V1502 Digital Alarm Clock: Setup, Features, and Troubleshooting Guide</p> <p>Comprehensive guide for the JALL V1502 Digital Alarm Clock, covering time and alarm settings, brightness, sound control, temperature units, snooze, reset functions, and troubleshooting tips. Learn how to set up your alarm clock for optimal use.</p>
<p>JALL Digital Wall Clock User Manual</p>  <p>ThreeDucksDirect@outlook.com</p>	<p>JALL Digital Wall Clock User Manual</p> <p>User manual for the JALL Digital Wall Clock, providing instructions on installation, setup, features like time and alarm setting, temperature display, screen brightness, night light, countdown timer, volume control, and troubleshooting.</p>
<p>JALL Digital Wall Clock User Manual</p>  <p>ThreeDucksDirect@outlook.com</p>	<p>JALL Digital Wall Clock User Manual</p> <p>User manual for the JALL Digital Wall Clock, covering installation, setup, features like time and alarm setting, temperature display, brightness control, and troubleshooting. Includes warranty information and contact details.</p>
<p>JALL 8 in 1 Colors Digital Wall Clock User Manual</p>  <p>Model: PH-10</p> <p>ThreeDucksDirect@outlook.com</p>	<p>JALL PH-10 8 in 1 Colors Digital Wall Clock User Manual</p> <p>User manual for the JALL PH-10 Digital Wall Clock, detailing installation, setup, features like time and alarm setting, temperature display, night light, screen brightness, countdown functions, and warranty information.</p>
<p>JALL RGB Digital Alarm Clock User Manual</p>  <p>ThreeDucksDirect@outlook.com</p>	<p>JALL RGB Digital Alarm Clock User Manual</p> <p>User manual for the JALL RGB Digital Alarm Clock, detailing setup, time setting, alarm functions, display options, USB output, and FAQs. Includes warranty information and customer support contact.</p>