

## Manuals+

[Q & A](#) | [Deep Search](#) | [Upload](#)

manuals.plus /

› [DENQBAR](#) /

› [DENQBAR Mini Motorized Wheelbarrow \(Model DQ-0289\) Instruction Manual](#)

## DENQBAR DQ-0289

# DENQBAR Mini Motorized Wheelbarrow (Model DQ-0289) Instruction Manual

Your guide to safe and efficient operation

## 1. INTRODUCTION AND OVERVIEW

---

This manual provides essential information for the safe and effective operation, maintenance, and troubleshooting of your DENQBAR Mini Motorized Wheelbarrow, Model DQ-0289. Designed for versatility, this 4-wheel drive machine is ideal for transporting materials in home gardens, construction sites, and professional horticulture.

Key features include a powerful 4-stroke 4.8 kW (6.5 HP) gasoline engine, a large transport bin with a capacity of up to 300 kg, and excellent mobility provided by four air-filled all-terrain tires and 4-wheel drive. The intuitive handlebar grip and easily accessible controls ensure improved maneuverability.

**selbst**

**ist der Mann**

**Das Do-it-yourself-Magazin**

**SELBST AUSPROBIERT**

**FAZIT: TTTT**

**Bewertet mit „SEHR GUT“**

**Ausgabe 08/2020**

**[www.selbst.de](http://www.selbst.de)**

*Figure 1: DENQBAR Mini Motorized Wheelbarrow, front-side view, yellow with black tires. This image highlights the compact design, yellow body, and robust black all-terrain tires.*

## **2. SAFETY INSTRUCTIONS**

Always prioritize safety when operating the motorized wheelbarrow. Failure to follow these instructions can

result in serious injury or property damage.

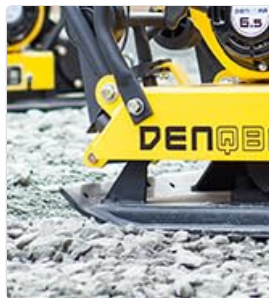
- **Read the Manual:** Before operation, thoroughly read and understand this entire instruction manual.
- **Personal Protective Equipment (PPE):** Always wear appropriate safety gear, including safety glasses, hearing protection, sturdy footwear, and gloves.
- **Work Area:** Ensure the work area is clear of bystanders, children, and pets. Operate only in well-lit conditions.
- **Fuel Handling:** Handle gasoline with extreme care. Refuel in a well-ventilated area with the engine off and cool. Do not smoke or allow open flames near fuel.
- **Exhaust Fumes:** The engine produces carbon monoxide, a colorless, odorless, poisonous gas. Operate only in outdoor, well-ventilated areas.
- **Moving Parts:** Keep hands, feet, and clothing away from all moving parts, especially the engine, wheels, and drive components.
- **Stability:** Maintain proper balance and control, especially on inclines or uneven terrain. Do not overload the wheelbarrow.
- **Engine Shut-off:** Always turn off the engine and allow it to cool before performing any maintenance, adjustments, or cleaning.

### 3. SETUP

---

Your DENQBAR Mini Motorized Wheelbarrow may require minor assembly before first use. Follow these general steps:

1. **Unpacking:** Carefully remove all components from the packaging. Check for any shipping damage or missing parts.
2. **Handlebar Assembly:** Attach the handlebar assembly to the main frame using the provided hardware. Ensure all bolts are securely tightened.
3. **Fluid Checks:**
  - **Engine Oil:** Check the engine oil level using the dipstick. Fill with recommended engine oil (refer to engine manual for type and capacity) if below the 'full' mark.
  - **Fuel:** Fill the fuel tank with fresh, unleaded gasoline. Do not overfill.
4. **Tire Pressure:** Verify that all four tires are inflated to the recommended pressure (typically found on the tire sidewall or in the engine manual).



*Figure 2: Close-up of an all-terrain tire. Ensure proper tire pressure for optimal performance and safety.*

### 4. OPERATING INSTRUCTIONS

---

Familiarize yourself with the controls before starting the engine.

## 4.1 Controls Overview



Figure 3: Side view showing the engine and handlebar controls.



Figure 4: Detailed view of the engine area and handlebar controls.

- **Throttle Lever:** Controls engine speed.
- **Clutch Lever:** Engages and disengages the drive system.
- **Brake Lever:** Activates the braking system.
- **Gear Selector:** Allows selection of forward and reverse gears.
- **Engine On/Off Switch:** For starting and stopping the engine.

## 4.2 Starting the Engine

1. Ensure the fuel valve is open and the engine switch is in the 'ON' position.
2. If the engine is cold, apply choke as per engine manufacturer's instructions.
3. Pull the recoil starter handle firmly until the engine starts.
4. Once started, gradually release the choke.

### 4.3 Operation

1. **Loading:** Load materials evenly into the transport bin, ensuring not to exceed the maximum weight capacity of 300 kg.
2. **Gear Selection:** Select the desired gear (forward or reverse) using the gear selector.
3. **Engaging Drive:** Slowly engage the clutch lever to begin moving. Adjust throttle for desired speed.
4. **Maneuvering:** Use the handlebars to steer. The 4-wheel drive provides excellent traction on various terrains.
5. **Dumping:** To unload, position the wheelbarrow, disengage the clutch, and use the bin release mechanism to tilt the bin forward.



*Figure 5: The motorized wheelbarrow loaded with firewood, demonstrating its capacity.*



Figure 6: Illustration of the dumping action, showing the bin tilted to unload materials.

#### 4.4 Stopping the Engine

To stop the engine, move the engine switch to the 'OFF' position and close the fuel valve.

### 5. MAINTENANCE

---

Regular maintenance ensures the longevity and safe operation of your motorized wheelbarrow.

- **Engine Oil:** Check oil level before each use. Change oil after the first 5 hours of operation, then every 25-50 hours or seasonally.
- **Air Filter:** Inspect and clean the air filter regularly, especially in dusty conditions. Replace if damaged.
- **Spark Plug:** Inspect and clean the spark plug annually or every 100 hours. Replace if worn.
- **Tires:** Check tire pressure before each use. Inspect for wear or damage.
- **General Cleaning:** Keep the machine clean, especially the engine cooling fins, to prevent overheating. Remove debris from the transport bin and chassis.
- **Fuel System:** Drain the fuel tank and carburetor if storing for extended periods (over 30 days) to prevent fuel degradation.



Figure 7: Detailed view of the 4-stroke gasoline engine, showing components for maintenance.

## 6. TROUBLESHOOTING

This section addresses common issues you might encounter.

Problem	Possible Cause	Solution
Engine does not start	No fuel; Engine switch OFF; Choke not applied (cold engine); Spark plug fouled; Low oil level.	Check fuel level; Turn engine switch ON; Apply choke; Clean/replace spark plug; Add oil.
Loss of power during operation	Overload; Dirty air filter; Low fuel; Incorrect throttle setting.	Reduce load; Clean air filter; Refuel; Adjust throttle.
Unusual vibrations or noise	Loose fasteners; Damaged components; Unbalanced load.	Inspect and tighten all fasteners; Check for damaged parts; Redistribute load.
Wheelbarrow does not move	Clutch not engaged; Gear not selected; Drive belt issue.	Engage clutch fully; Select a gear; Inspect drive belt for damage or looseness.

If you encounter issues not listed here or if the suggested solutions do not resolve the problem, please contact customer support.

## 7. SPECIFICATIONS

Specification	Value
Brand	DENQBAR
Model Number	DQ-0289
Color	Yellow
Product Dimensions (L x W x H)	137 x 76 x 99.5 cm
Item Weight	160 Kilograms
Maximum Weight Capacity	300 Kilograms
Material	Steel

Specification	Value
Engine Type	4-stroke Gasoline Engine
Engine Power	4.8 kW (6.5 HP)
Drive System	4-wheel drive
Number of Wheels	4
Wheel Type	Rubber, All-terrain
ASIN	B085GHTSLC
International Article Code	04260090232897

## 8. WARRANTY AND SUPPORT

Your DENQBAR Mini Motorized Wheelbarrow is manufactured to high-quality standards. For information regarding warranty coverage, please refer to the warranty card included with your product or visit the official DENQBAR website.

For technical assistance, spare parts, or any questions regarding the operation and maintenance of your product, please contact DENQBAR customer support. Keep your model number (DQ-0289) and purchase information readily available when contacting support.

**Online Support:** Visit the official DENQBAR website for FAQs and contact options.