

Yaheetech YA-00096146

Yaheetech Fir Wood Multi-Tier Plant Stand (Model YA-00096146) Instruction Manual

INTRODUCTION

Thank you for choosing the Yaheetech Fir Wood Multi-Tier Plant Stand. This manual provides essential information for the safe assembly, operation, and maintenance of your new plant stand. Please read these instructions carefully before assembly and retain them for future reference.

This plant stand is designed to display multiple potted plants, offering a decorative and functional solution for organizing your greenery indoors or outdoors. Constructed from 100% natural fir wood, it features a stable structure with multiple platforms.

SPECIFICATIONS

Feature	Detail
Brand	Yaheetech
Model Number	YA-00096146
Color	Brown
Material	Fir Wood
Product Dimensions (L x W x H)	97 x 25 x 96 cm (38.2 x 9.8 x 37.8 inches)
Product Weight	4 kg (8.8 lbs)
Maximum Load Capacity	30 kg (66 lbs)
Number of Platforms	7
Special Features	Detachable, Mothproof, Corrosion Resistant, Mildewproof

Refer to the image below for detailed dimensions:

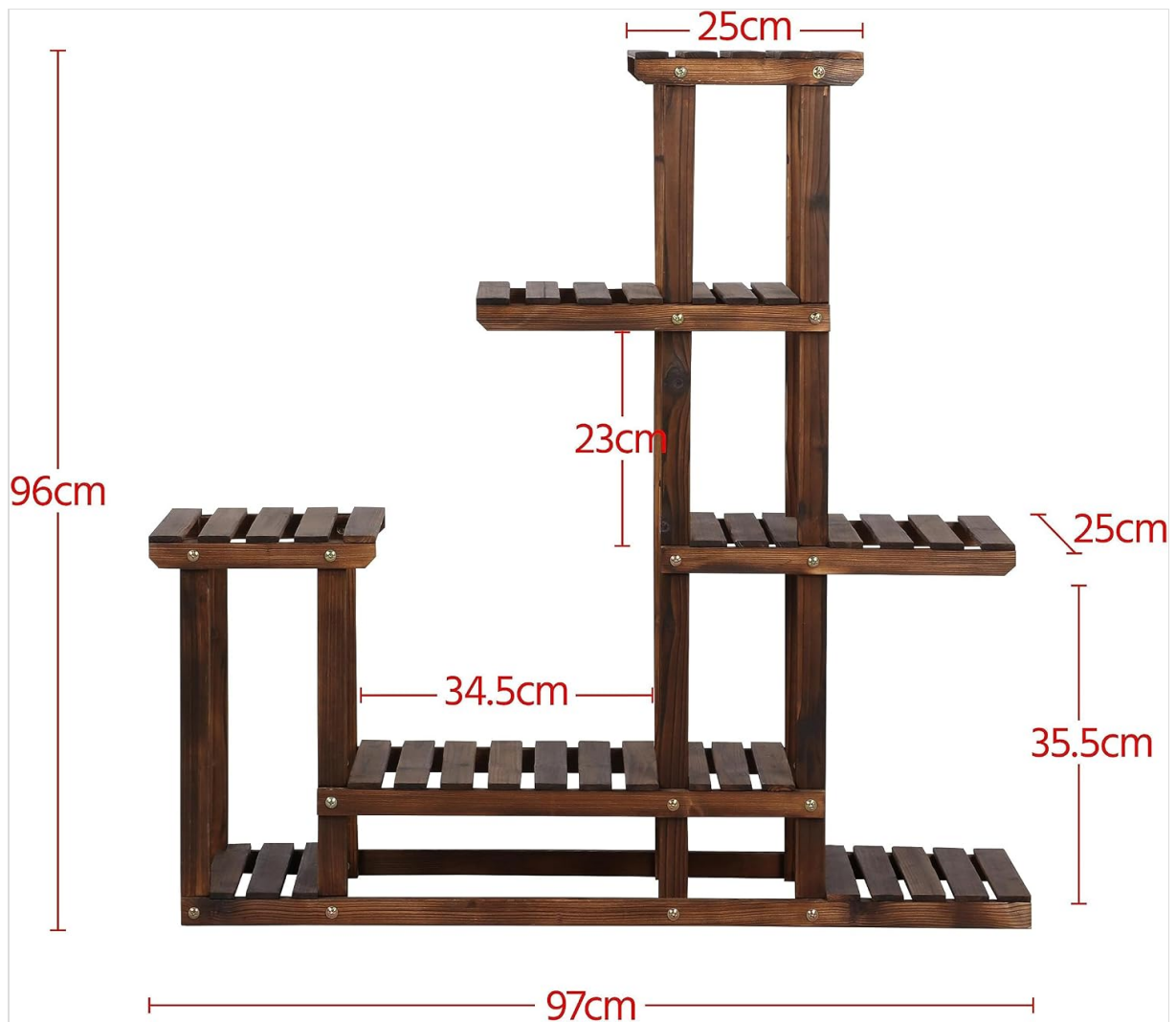


Image: Detailed dimensions of the plant stand.

SETUP AND ASSEMBLY

This plant stand requires simple assembly. All necessary parts and hardware are included. Please follow these steps carefully:

- Unpack Components:** Carefully remove all parts from the packaging. Verify that all components listed in the parts list (not provided in this manual, refer to your product packaging) are present and undamaged.
- Identify Parts:** Separate the wooden slats, support beams, and screws. The stand consists of multiple tiers and support structures.
- Assemble Base:** Begin by assembling the base structure. Connect the longest horizontal slats to the vertical support beams using the provided screws. Ensure all connections are secure but do not overtighten initially.
- Attach Tiers:** Progressively attach the various tiered platforms to the vertical supports. The design allows for a staggered arrangement of shelves. Match the pre-drilled holes and secure each platform with screws.
- Secure All Connections:** Once all parts are in place, gently tighten all screws to ensure the stand is stable and firm. Avoid excessive force to prevent stripping screws or damaging the wood.
- Final Check:** Ensure the assembled stand is level and stable before placing any items on it.

The stand is constructed from 100% natural fir wood, known for its strength and stability. The robust slats

are 1.4 cm thick for enhanced stability.



Image: Detail of wooden slats and screw connections.

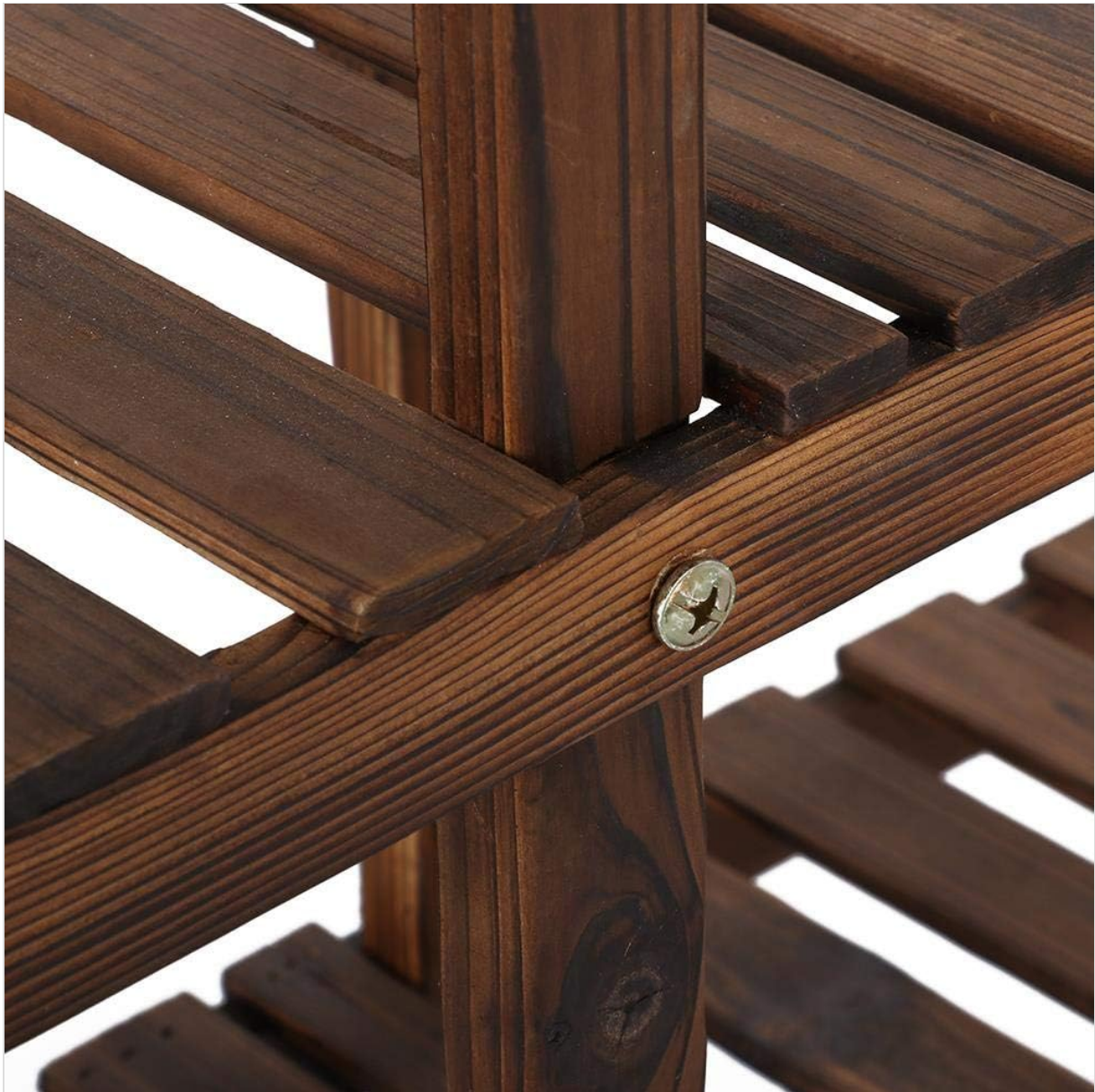


Image: Detail of a screw connection.

OPERATING INSTRUCTIONS

The Yaheetech plant stand is designed for displaying potted plants and other decorative items. Follow these guidelines for optimal use:

- **Placement:** Position the plant stand on a flat, stable surface to prevent tipping. It is suitable for indoor use in living rooms, hallways, or conservatories, and outdoor use on balconies, patios, or gardens.
- **Weight Distribution:** Distribute the weight of your plants evenly across the platforms. Avoid placing excessively heavy items on a single shelf, especially on the upper tiers, to maintain stability. The stand has a maximum load capacity of 30 kg.
- **Plant Selection:** Choose plants appropriate for the size and weight capacity of each shelf. The multi-tiered design allows for various plant sizes.
- **Watering:** When watering plants, ensure that excess water does not accumulate on the wooden surfaces. Use drip trays under pots to protect the wood from moisture damage.



Image: Plant stand in an indoor setting.

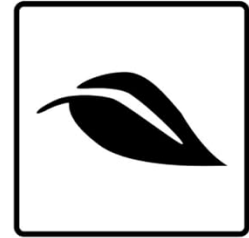


Image: Plant stand on a balcony.

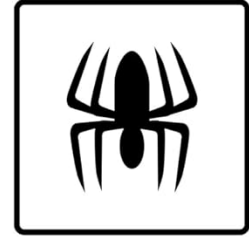
MAINTENANCE

Proper care will extend the life and appearance of your Yaheetech plant stand:

- **Cleaning:** Wipe the wooden surfaces regularly with a soft, damp cloth to remove dust and dirt. Avoid using harsh chemicals or abrasive cleaners, which can damage the wood finish.
- **Moisture Protection:** Although the fir wood is treated for corrosion and mildew resistance, prolonged exposure to excessive moisture should be avoided. Ensure good ventilation if used outdoors and protect from heavy rain. Use saucers under plant pots to catch water.
- **Sunlight Exposure:** While suitable for outdoor use, continuous direct sunlight can cause wood to fade or dry out over time. Consider occasional repositioning or protective covers if placed in harsh sun.
- **Tighten Hardware:** Periodically check all screws and connections. Tighten them if they become loose to maintain the stand's stability.
- **Pest Control:** The wood is treated to be mothproof. However, regular inspection for any signs of pests is recommended, especially if used outdoors.



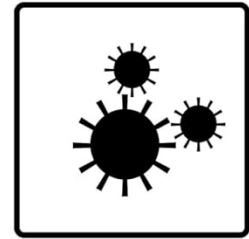
Harmless Materials



Mothproof



Corrosion Resistance



Mildewproof

Image: Features of the plant stand including mothproof, corrosion resistance, and mildewproof properties.

TROUBLESHOOTING

If you encounter any issues with your plant stand, refer to the following common solutions:

- **Stand is Wobbly:**

- Ensure all screws are fully tightened.
- Verify that the stand is placed on a completely flat and level surface.
- Check if any wooden components are damaged or warped.

- **Difficulty During Assembly:**

- Re-read the assembly instructions carefully.
- Ensure you are using the correct screws for each connection.
- Do not overtighten screws until all parts are loosely assembled, then tighten gradually.

- **Wood Damage (Cracks, Splitting):**

- Minor cracks can occur in natural wood due to environmental changes; these usually do not affect structural integrity.
- Avoid placing the stand in areas with extreme temperature fluctuations or direct, intense heat.
- Ensure proper moisture control as described in the Maintenance section.

WARRANTY AND SUPPORT

Specific warranty information for the Yaheetech Fir Wood Multi-Tier Plant Stand (Model YA-00096146) is not provided within this manual. For details regarding warranty coverage, returns, or technical support, please refer to the product packaging or contact Yaheetech customer service directly through their official website or the retailer where the product was purchased.

Yaheetech aims to provide quality products that combine style, functionality, and value. For further assistance, please visit the [Yaheetech Brand Store](#).