

Manuals+

[Q & A](#) | [Deep Search](#) | [Upload](#)

manuals.plus /

- › [LEGO](#) /
- › [LEGO City Air Race Set 60260 Instruction Manual](#)

LEGO 60260

LEGO City Air Race Set 60260 Instruction Manual

Brand: LEGO | Model: 60260

INTRODUCTION

The LEGO City Air Race Set 60260 allows builders to construct a thrilling air race scene featuring a stunt plane, two ripcord helicopters, and two course pylons. This set includes three minifigure pilots: Rivera, Xtreme, and Vitarush, providing opportunities for imaginative play and aerial adventures.



Figure 1: The LEGO City Air Race Set 60260 packaging, illustrating the main models and minifigures included.

SET COMPONENTS

This set contains 140 LEGO building elements to construct the following models and figures:

- **Stunt Plane:** One propeller-driven aircraft with an opening cockpit.
- **Ripcord Helicopters:** Two flying helicopters, each with a ripcord mechanism and opening cockpit.
- **Course Pylons:** Two buildable pylons to mark the race course.
- **Minifigures:** Three pilot minifigures: Rivera, Xtreme, and Vitarush.



Figure 2: Overview of all included LEGO elements for the Air Race set.

SETUP AND ASSEMBLY

Assembly of the LEGO City Air Race Set 60260 is guided by the included building instructions. For an enhanced building experience, refer to the digital Instructions PLUS available through the free LEGO Building Instructions app on smartphones and tablets. This interactive guide offers zoom and rotate viewing tools.

1. **Unpack Components:** Carefully open the packaging and sort the LEGO elements.
2. **Follow Instructions:** Use the step-by-step building guide to construct the stunt plane, two ripcord helicopters, and two course pylons.
3. **Minifigure Assembly:** Assemble the three pilot minifigures.



Figure 3: Instructions PLUS app provides interactive 3D building guides.

OPERATING INSTRUCTIONS

The LEGO City Air Race set offers interactive play features for both the stunt plane and ripcord helicopters.

Stunt Plane Operation:

- The stunt plane features an opening cockpit. Place any of the three pilot minifigures inside.
- The propeller can be manually spun for realistic play.

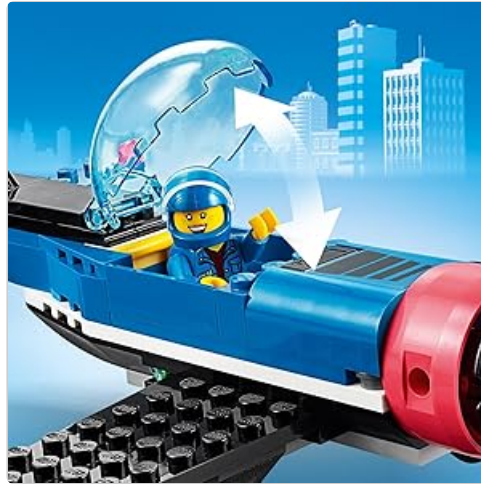


Figure 4: The stunt plane's opening cockpit for pilot placement.

Ripcord Helicopter Operation:

- Each ripcord helicopter has an opening cockpit for a minifigure.
- To launch a helicopter, insert the ripcord into the designated slot on the helicopter.
- Hold the helicopter firmly and pull the ripcord swiftly to make the rotors spin and launch the helicopter into the air.



Figure 5: Demonstrating the ripcord mechanism for helicopter launch.



Figure 6: Both ripcord helicopters ready for flight.

Official Product Video:

Your browser does not support the video tag.

Video 1: Official product overview of the LEGO City Air Race 60260 set, showcasing its features and play possibilities.

Your browser does not support the video tag.

Video 2: A 360-degree view of the LEGO City Airport Air Race 60260 set, highlighting its design from all angles.

MAINTENANCE

To ensure the longevity and cleanliness of your LEGO set, follow these general maintenance guidelines:

- **Cleaning:** Use a soft cloth dampened with water and a mild soap solution to gently clean LEGO bricks. Rinse thoroughly with clean water and air dry. Avoid harsh chemicals or abrasive materials.
- **Storage:** Store LEGO elements in a cool, dry place away from direct sunlight to prevent discoloration and warping. Keep small parts organized to prevent loss.
- **Handling:** Handle ripcords and moving parts with care to avoid damage.

TROUBLESHOOTING

Problem	Possible Cause	Solution
Helicopter does not fly high or far.	Insufficient force when pulling ripcord, or ripcord not fully inserted.	Ensure the ripcord is fully inserted and pull it swiftly and firmly. Practice may be required to achieve optimal flight.
Missing or damaged parts.	Parts may have been misplaced during assembly or play, or were defective.	Check all areas where parts might have fallen. Contact LEGO Customer Service for replacement parts if necessary.
Minifigure does not fit in cockpit.	Minifigure may not be correctly positioned or accessories are obstructing.	Remove any large accessories from the minifigure. Ensure the minifigure's legs are bent to fit properly.

SPECIFICATIONS

- **Model Number:** 60260
 - **Number of Pieces:** 140
 - **Recommended Age:** 5 years and up
 - **Stunt Plane Dimensions (approx.):** 3" (8 cm) high, 7" (20 cm) long, 7" (20 cm) wide
 - **Ripcord Helicopter Dimensions (each, approx.):** 2" (7 cm) high, 7" (18 cm) long, 4" (12 cm) wide
 - **Item Weight:** 0.04 ounces
 - **Product Dimensions:** 11.1 x 10.32 x 2.99 inches
 - **Release Date:** September 1, 2020
 - **Manufacturer:** LEGO
-

IMPORTANT SAFETY INFORMATION

WARNING: CHOKING HAZARD - Toy contains small parts. Not for children under 3 years.

Always supervise young children during play to prevent accidental ingestion of small parts. Ensure play is conducted in an open area, especially when launching ripcord helicopters, to avoid injury or damage to property.

SUPPORT AND WARRANTY

For customer support, missing parts, or warranty information, please visit the official LEGO website or contact LEGO Customer Service directly. Detailed contact information and FAQs can be found on their support pages.

Online Support: www.lego.com/service