

Weiser 9GED27000-001

Weiser SmartCode 10 Lever Electronic Lock User Manual

Model: 9GED27000-001

INTRODUCTION

This manual provides comprehensive instructions for the installation, operation, and maintenance of your Weiser SmartCode 10 Lever Electronic Lock. Please read this manual thoroughly before installation and use to ensure proper function and security.

KEY FEATURES

- **Keyless Entry:** Secure and convenient access using a personalized code.
- **SmartKey Re-key Technology:** Allows you to re-key the lock yourself in seconds, providing enhanced security and convenience.
- **Auto-Lock Function:** Multiple preset automatic locking settings are available for added security.
- **Adjustable Latch:** Features an adjustable backset from 6 to 6 cm to fit all standard doors, with interchangeable round and square corner faceplates.
- **Easy Installation:** Designed for quick installation with basic tools.
- **Durable Finish:** Satin Nickel finish for a modern aesthetic and durability.



✓ Protects against advanced break-in techniques

✓ SmartKey allows you to re-key the lock yourself in seconds, leaving lost or unreturned keys obsolete



KICK-IN
RESISTANT



BUMP
PROOF



PICK
RESISTANT



DRILL
RESISTANT



SAW
RESISTANT

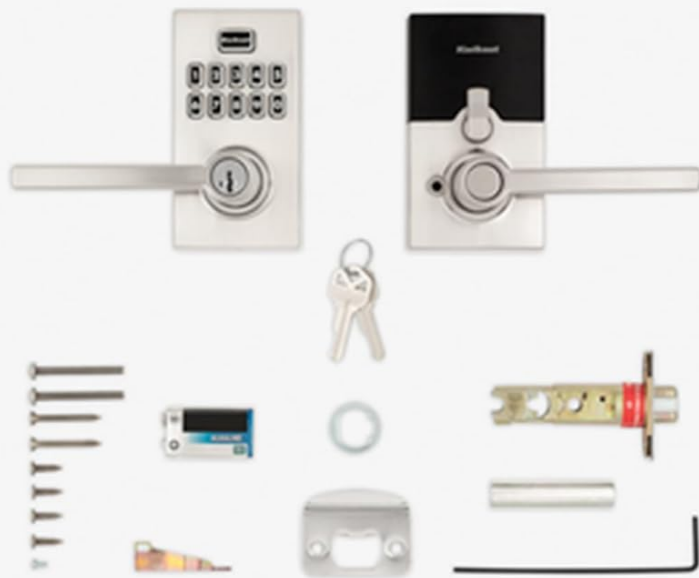
Image: SmartKey Security features, highlighting protection against various break-in techniques.

WHAT'S IN THE BOX

The Weiser SmartCode 10 Lever Electronic Lock package includes the following components:

- Exterior Deadbolt Assembly
- Interior Deadbolt Assembly
- Adjustable Latch
- Strike Plate
- Collar
- Mounting Plate
- Installation Hardware (screws, etc.)
- 2 Weiser Keys
- SmartKey Tool
- Installation Guide (this manual)

WHAT'S IN THE BOX



- Exterior Deadbolt
- Interior Deadbolt
- Adjustable Latch
- Strike
- Collar
- Mounting Plate
- Installation Hardware
- 2 Weiser® Keys
- SmartKey™ Tool
- Installation Guide



Image: All components included in the product packaging.

SETUP AND INSTALLATION

The Weiser SmartCode 10 Lever Electronic Lock is designed for easy installation on most standard residential doors. A Phillips head screwdriver is typically the only tool required.

1. **Prepare the Door:** Ensure your door has standard bore holes. If replacing an existing lock, remove it.
2. **Install the Latch:** Insert the adjustable latch into the door edge. Ensure the correct faceplate (round or square corner) is used and secured.
3. **Install Exterior Assembly:** Place the exterior keypad assembly onto the door, ensuring the spindle passes through the latch.
4. **Install Interior Mounting Plate:** Secure the interior mounting plate to the exterior assembly using the provided screws.
5. **Install Interior Assembly:** Connect the cable from the exterior assembly to the interior assembly. Attach the interior

assembly to the mounting plate.

6. **Install Batteries:** Insert 4 AA batteries (not included) into the battery pack within the interior assembly. Ensure correct polarity.
7. **Perform Door Handing Process:** This step is crucial for the lock to learn the orientation of your door. Follow the specific instructions in the included quick start guide for this process.
8. **Test Operation:** Test the lock with the key and by entering a default or newly programmed code to ensure it locks and unlocks smoothly.



Image: Adjustable latch backset detail.

OPERATING INSTRUCTIONS

Unlocking the Door

- **Using a Code:** Enter your 4-8 digit user code on the keypad. The lock will beep and the lever will unlock.

- **Using the Key:** Insert the physical key into the keyway and turn to unlock.
- **From Inside:** Rotate the thumb-turn on the interior side of the lock.

Locking the Door

- **From Outside:** Press the Lock button on the keypad. The lock will beep and engage.
- **Auto-Lock:** If enabled, the lock will automatically re-lock after a set period (e.g., 30 seconds) after being unlocked.
- **From Inside:** Rotate the thumb-turn on the interior side of the lock.

Programming User Codes

Refer to the detailed programming instructions in your quick start guide for adding, deleting, or changing user codes. This typically involves using the Program button on the interior assembly.

Using SmartKey Re-key Technology

The SmartKey feature allows you to re-key your lock to work with any other Weiser SmartKey key. This process takes seconds and requires your existing key, the new key, and the SmartKey tool. Follow the 3 easy steps provided in the SmartKey instructions.



KEYLESS ENTRY

Makes coming and going secure and convenient.

Image: Keyless entry convenience.

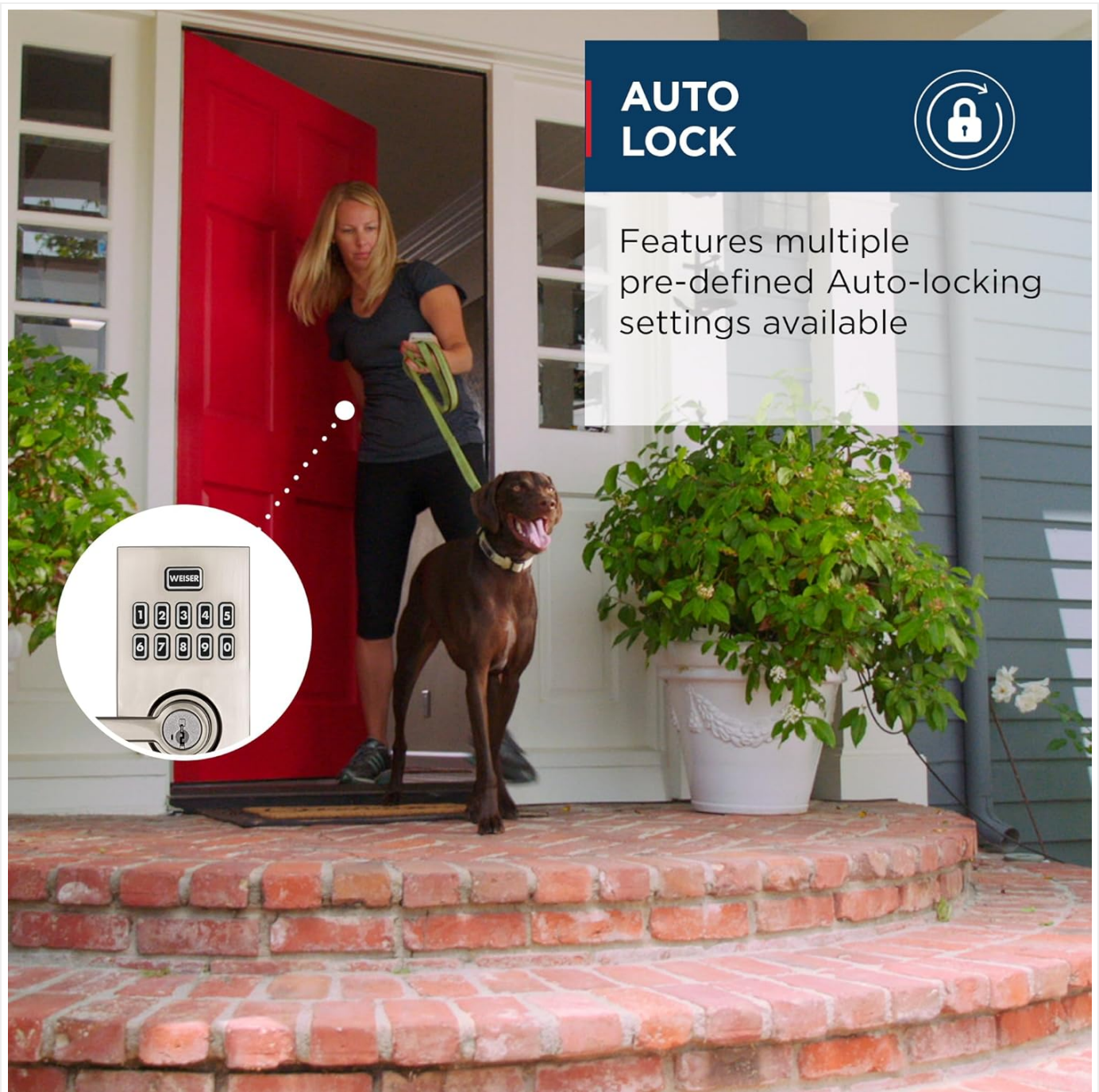


Image: Auto-lock feature in action.

MAINTENANCE

- **Cleaning:** Clean the lock with a soft, damp cloth. Avoid abrasive cleaners or solvents that could damage the finish or electronic components.
- **Battery Replacement:** When the batteries are low, the lock will typically provide an audible or visual low battery warning. Replace all 4 AA batteries simultaneously with new, high-quality alkaline batteries. Do not mix old and new batteries or different battery types.
- **Lubrication:** The mechanical components of the lock are factory lubricated and generally do not require additional lubrication. If the latch or lever action becomes stiff, consult a professional locksmith.

TROUBLESHOOTING

Problem	Possible Cause	Solution
Lock does not respond to keypad entry.	Dead batteries; incorrect code entered; lock in programming mode.	Replace batteries; ensure correct code is entered; exit programming mode.
Lock mechanism does not engage/disengage fully (especially in cold weather).	Misalignment of lock components; extreme temperature affecting internal mechanism; low batteries.	Check alignment of the latch and strike plate; ensure batteries are fresh; if problem persists in cold, consider professional inspection or insulation.
Handle/lever is loose or falls off.	Missing or loose set screws.	Ensure all set screws are present and tightened according to installation instructions.
Water/elements getting into the gap around the outside knob.	Design gap or improper sealing during installation.	Consider adding rubber seals or weatherstripping to fill the gap and prevent moisture ingress.
SmartKey re-keying fails.	Incorrect procedure; wrong type of key.	Ensure you are following the SmartKey re-keying instructions precisely. Use only Weiser SmartKey compatible keys.

SPECIFICATIONS

- **Brand:** Weiser
- **Model Name:** SmartCode 10 Lever Electronic Lock, Satin Nickel
- **Model Number:** 9GED27000-001
- **Lock Type:** Keypad
- **Special Feature:** Keyless
- **Material:** Nickel
- **Color:** Satin Nickel
- **Finish Type:** Nickel
- **Item Dimensions (L x W x H):** 5.79 x 5.79 x 8.86 inches
- **Item Weight:** 4.18 pounds
- **Power Source:** 4 AA Batteries (not included)
- **Control Method:** Touch
- **UPC:** 059184422320
- **Country of Origin:** Canada

DIMENSIONS

WEISER® SmartCode 10

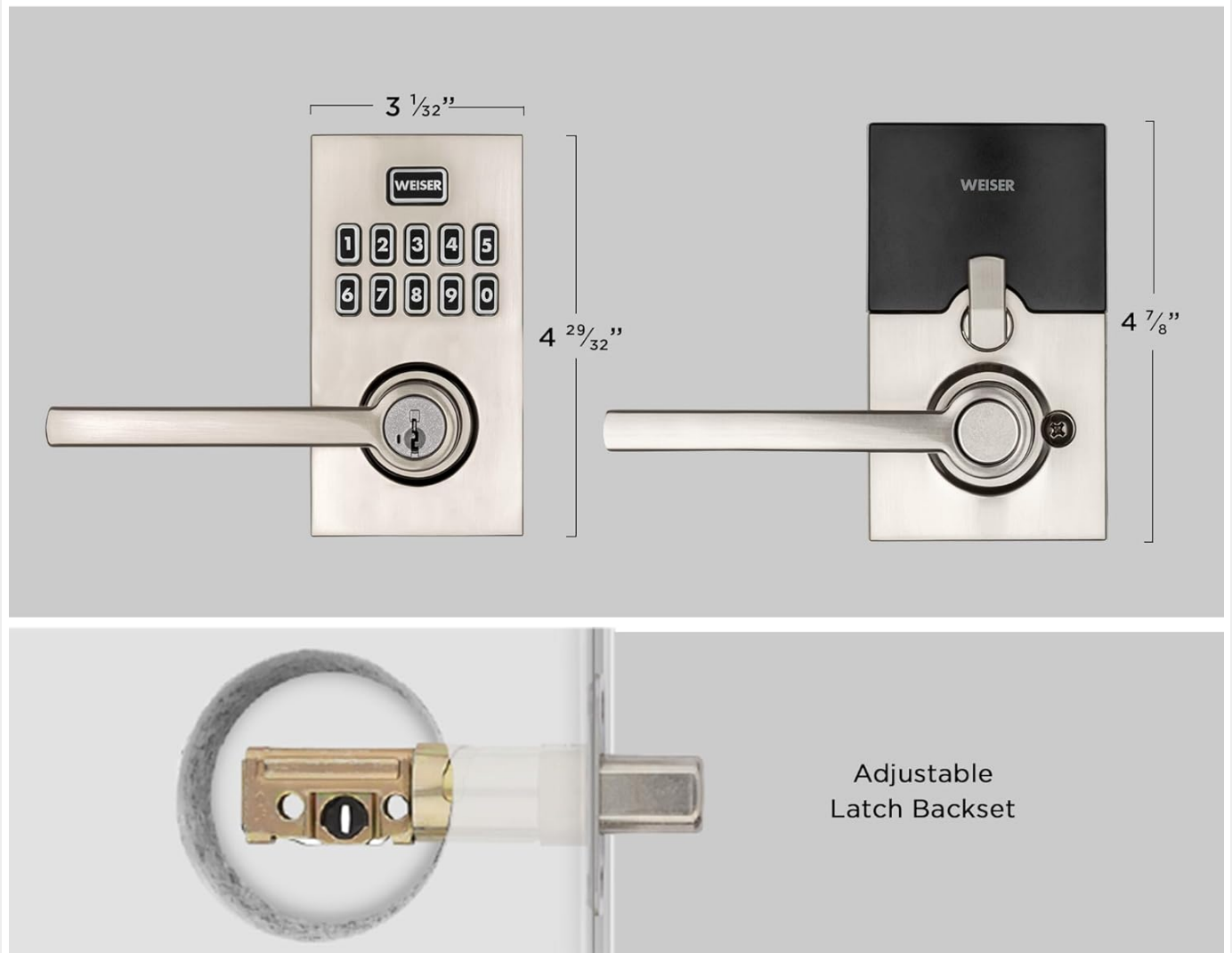


Image: Product dimensions and latch backset detail.

WARRANTY INFORMATION





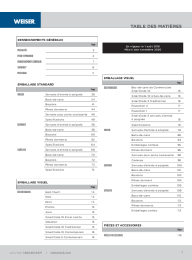
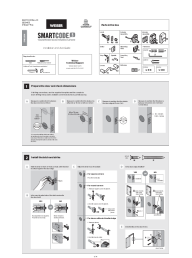
Specific warranty details for the Weiser SmartCode 10 Lever Electronic Lock are typically provided with the product packaging or can be found on the official Weiser website. Please retain your proof of purchase for warranty claims.

SUPPORT AND CONTACT

For further assistance, technical support, or to inquire about replacement parts, please visit the official Weiser website or contact their customer service department. Contact information is usually available on the product packaging or their website.

Note: Always refer to the most current information available from the manufacturer for the latest support details.

Related Documents - 9GED27000-001

	<p>Weiser SmartCode 5 Lever Programming and Troubleshooting Guide</p> <p>A comprehensive guide to programming and troubleshooting the Weiser SmartCode 5 Lever electronic lock, covering mastercode setup, user code management, and common issues.</p>
	<p>Weiser SmartCode Touchpad Electronic Locks Quick Start Guide</p> <p>Comprehensive guide to installing and programming your Weiser SmartCode Touchpad Electronic Lock, including parts list, tools, step-by-step installation, operation, system alerts, and programming instructions.</p>
	<p>Weiser SmartCode Keypad Electronic Locks Quick Start Guide and Installation Instructions</p> <p>Comprehensive guide for installing, programming, and using Weiser SmartCode Keypad Electronic Locks, covering parts, tools, step-by-step installation, programming features, system alerts, and important safeguards.</p>
	<p>Weiser SmartCode Electronic Keypad Lock Installation Guide</p> <p>This guide provides instructions for installing and programming the Weiser SmartCode electronic keypad lock. It covers parts identification, required tools, step-by-step installation, programming features, system alerts, and important safety measures.</p>
	<p>Weiser Catalogue Complet de Quincaillerie de Porte et Serrures</p> <p>Explorez le catalogue Weiser pour une vaste sélection de quincaillerie de porte, serrures électroniques et mécaniques, incluant les technologies SmartKey et Microban. Trouvez spécifications, finitions et prix.</p>
	<p>Weiser SmartCode 5 Touchpad Electronic Lever Installation and User Guide</p> <p>Comprehensive guide for installing and using the Weiser SmartCode 5 Touchpad Electronic Lever, featuring Z-Wave Plus technology. Includes step-by-step instructions, troubleshooting, and technical specifications for smart home integration.</p>