

ICP 1184837

ICP Tempstar Heil ComfortMaker 1184837 Control Board User Manual

Model: 1184837

1. INTRODUCTION

This manual provides essential information for the safe and effective installation, operation, and maintenance of the ICP Tempstar Heil ComfortMaker 1184837 Control Board. This control board serves as a substitute for part numbers 1190668 and 1185252, designed for specific HVAC furnace models. Please read this manual thoroughly before attempting any installation or service.

2. SAFETY INFORMATION

WARNING: Electrical Shock Hazard

- Always disconnect power to the furnace unit before installing, servicing, or removing the control board. Failure to do so can result in severe personal injury or death.
- Installation and service should only be performed by a qualified HVAC technician.
- Ensure all wiring connections are secure and comply with local electrical codes.
- Do not operate the furnace with damaged wiring or components.

CAUTION: Equipment Damage Hazard

- Handle the control board with care to avoid damage to electronic components.
- Ensure the replacement board is compatible with your furnace model before installation.

3. PRODUCT OVERVIEW

The ICP Tempstar Heil ComfortMaker 1184837 Control Board is a critical component in your furnace's operation, managing various functions such as ignition, fan control, and safety monitoring. This board is a direct replacement for original part numbers 1190668 and 1185252, ensuring seamless integration and functionality within compatible systems.

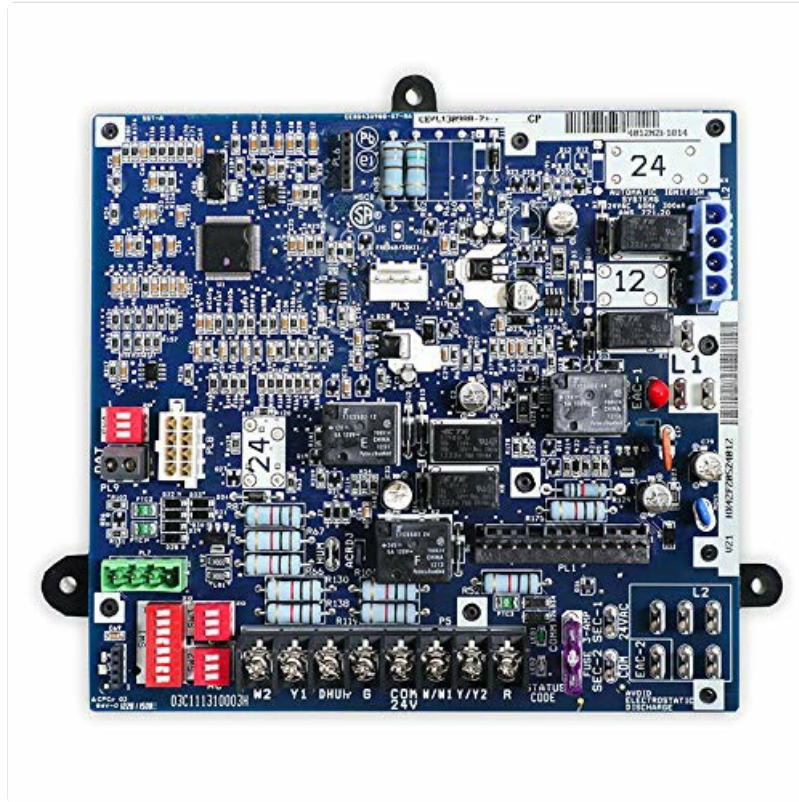


Image 1: The ICP Tempstar Heil ComfortMaker 1184837 Control Board. This image shows the green circuit board with various connectors and electronic components.

4. COMPATIBILITY

This control board (Part No. 1184837) is a substitute for 1190668 and 1185252 and is compatible with the following furnace models:

- F9MAC0602120A2
- F9MAC0802120A2
- F9MAC1002122A2
- F9MAE0601714A2
- F9MAE0602120A2
- F9MAE0801714A2
- F9MAE0802120A2
- F9MAE1002122A2
- F9MAE1202422A2

- G9MAC0602120A2
- G9MAC0802120A2
- G9MAC1002122A2
- G9MAE0601714A2
- G9MAE0602120A2
- G9MAE0801714A2
- G9MAE0802120A2
- G9MAE1002122A2
- G9MAE1202422A2

Always verify your furnace model number against this list before purchasing or installing to ensure proper fit and function.

5. INSTALLATION / SETUP

Note: Installation should only be performed by a qualified HVAC technician.

1. **Power Disconnection:** Locate the main power switch for your furnace and turn it OFF. Additionally, turn off the circuit breaker supplying power to the furnace. Verify power is off using a voltage tester.
2. **Access Panel Removal:** Remove the furnace access panel(s) to expose the existing control board.
3. **Wiring Documentation:** Before disconnecting any wires, take clear photographs or make detailed diagrams of all wiring connections to the old control board. Pay close attention to the position and color of each wire.
4. **Disconnect Wires:** Carefully disconnect all wires and connectors from the old control board.
5. **Remove Old Board:** Unmount the old control board from its housing. Note how it was secured (screws, clips, etc.).
6. **Install New Board:** Mount the new ICP 1184837 control board in the same location and orientation as the old board. Secure it properly.
7. **Reconnect Wires:** Using your photographs or diagrams, carefully reconnect all wires and connectors to the new control board. Double-check every connection for accuracy and security.
8. **Replace Access Panel:** Once all connections are verified, replace the furnace access panel(s).
9. **Restore Power:** Turn on the circuit breaker, then turn on the main power switch for the furnace.
10. **Test Operation:** Initiate a heating cycle to ensure the furnace operates correctly. Observe for any error codes or unusual behavior.

6. OPERATION

The control board operates automatically, managing the furnace's heating cycles, fan operation, and safety features based on signals from the thermostat and internal sensors. Once properly installed, no direct user interaction with the control board is typically required for normal operation.

Refer to your furnace's specific user manual for details on setting thermostat temperatures and understanding furnace operational modes.

7. MAINTENANCE

The ICP 1184837 control board itself requires no routine maintenance. However, regular maintenance of the overall furnace system is crucial for its longevity and efficient operation. This includes:

- **Filter Replacement:** Replace or clean furnace air filters regularly as recommended by your furnace manufacturer.
- **Annual Inspection:** Schedule annual professional inspections and tune-ups for your furnace. A technician can check electrical connections, clean components, and ensure all systems, including the control board, are functioning optimally.
- **Visual Inspection:** Periodically, a qualified technician can visually inspect the control board for any signs of overheating, corrosion, or loose connections.

8. TROUBLESHOOTING

If your furnace is not operating correctly after control board installation, consider the following troubleshooting steps. Always ensure power is disconnected before inspecting internal components.

- **No Power:** Check the circuit breaker and furnace power switch. Ensure all wiring connections to the control board are secure.
- **Furnace Not Starting:** Verify the thermostat settings. Check for any diagnostic fault codes displayed on the control board (if applicable, refer to your furnace manual for code interpretations). Ensure all safety switches (e.g., door switch) are engaged.
- **Fan Issues:** If the fan is not operating or running continuously, check fan limit switch settings and wiring.
- **Intermittent Operation:** Loose connections or faulty sensors can cause intermittent issues. Re-check all wiring.

For complex issues or if you are unsure, contact a qualified HVAC technician for diagnosis and repair.

9. SPECIFICATIONS

Attribute	Detail
Brand	ICP

Part Number	1184837
Substitute Part Numbers	1190668, 1185252
Manufacturer	ICP
ASIN	B0851SJDFQ
Date First Available	February 21, 2020
Product Type	Furnace Control Board / Circuit Board

10. WARRANTY AND SUPPORT

Specific warranty information for the ICP Tempstar Heil ComfortMaker 1184837 Control Board is typically provided by the point of purchase or the manufacturer. Please refer to your purchase documentation or contact ICP directly for warranty details and technical support. It is recommended to retain your proof of purchase for warranty claims.