

Tonton D5309HN8-B

Tonton D5309HN8-B 4K Wireless Security Camera System User Manual

Model: D5309HN8-B

Brand: Tonton

1. INTRODUCTION

This manual provides detailed instructions for the installation, operation, and maintenance of your Tonton D5309HN8-B 4K Wireless Security Camera System. This system is designed for home and business security, offering advanced features such as 4K resolution, AI human detection, two-way audio, and remote access. Please read this manual thoroughly before using the product to ensure proper functionality and safety.



Figure 1: Tonton D5309HN8-B 4K Wireless Security Camera System Overview

2. What's in the Box

Carefully unpack the contents and verify that all items are present:

- 1 x 4K NVR with 2TB HDD
- 8 x 3MP Cameras
- 1 x 12V 2A Power Supply for NVR (1.8M)
- 8 x 12V 1A Power Supply for Cameras (3M Long)
- 1 x USB Mouse

- 1 x Network Cable
- 1 x HDMI Cable
- 8 x Pack of Screws
- 1 x Wall Sticker
- 1 x User Manual

What's in the Box

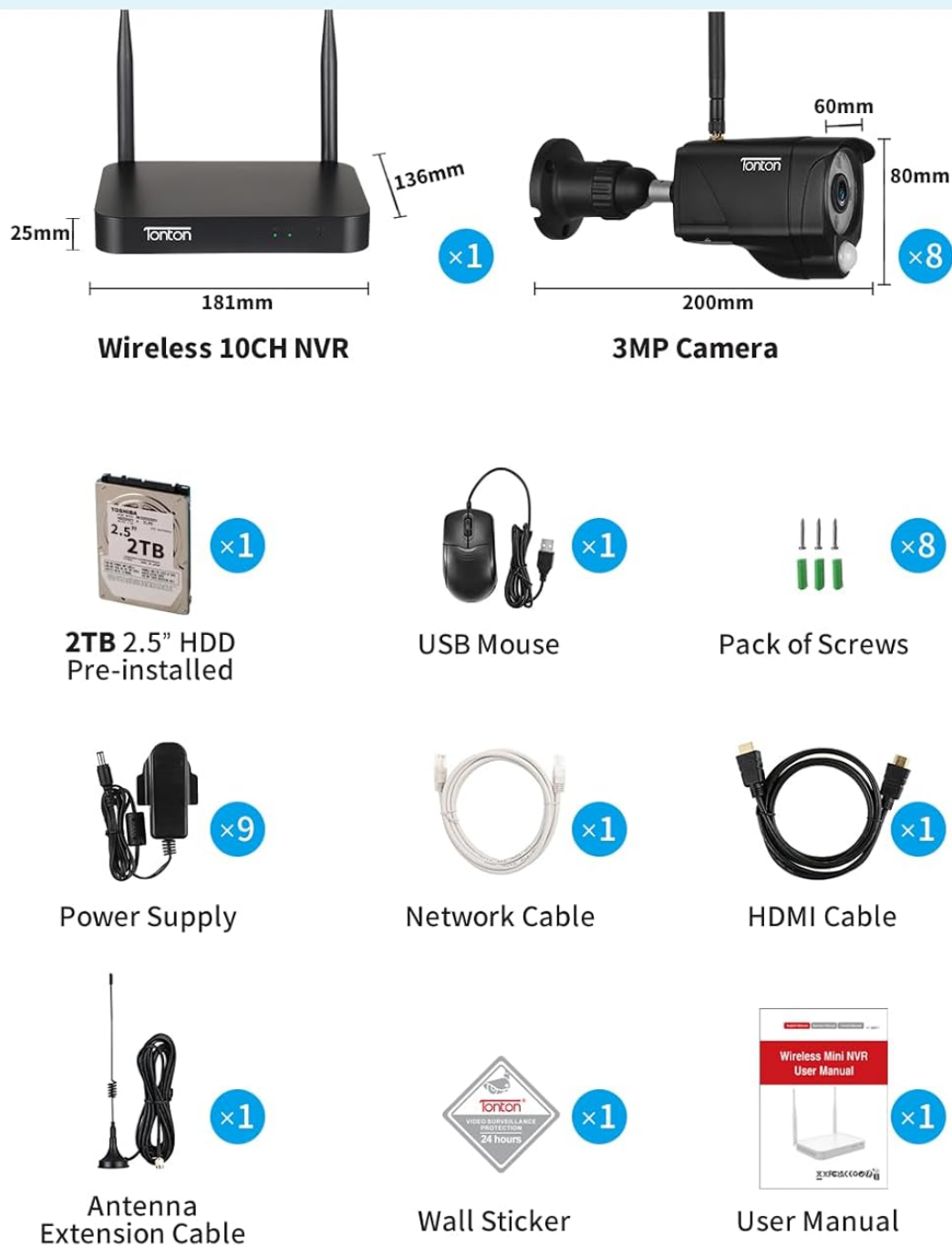


Figure 2: Package Contents

3. SETUP

3.1 Initial Power-up and Wireless Connection

The Tonton security camera system is designed for plug-and-play operation. The cameras connect wirelessly to the NVR, eliminating the need for video cables. Each camera requires a power source.

1. Connect the 12V 2A power supply to the NVR and plug it into an electrical outlet.
2. Connect each 3MP camera to its respective 12V 1A power supply and plug them into electrical outlets.
3. Connect the NVR to a monitor (not included) using the provided HDMI cable.
4. The cameras will automatically pair with the NVR. You should see live feeds from all connected cameras on your monitor.

Auto Pair, Plug-and-Play WiFi

No need for complex configurations



Figure 3: Camera Power and Wireless Connection



Figure 4: System Wireless Connectivity

3.2 Remote Access Setup (Optional)

For remote viewing on your phone or PC, connect the NVR to your internet router:

1. Connect the NVR to your router via the provided Ethernet cable or through the NVR's built-in WiFi.
2. Download the 'EseeCloud' app from your mobile device's app store (available for Android and iOS).
3. Register an account and log in.
4. Scan the device QR code on your NVR to add it to the app.
5. For PC software ('ismkit'), please contact sales@tontonsecurity.com for download instructions.

Easy Setup Guide

- 1 Powered & wireless-connected to router



- 2 Download Free **EseeCloud** App



- 3 Enjoy Live View

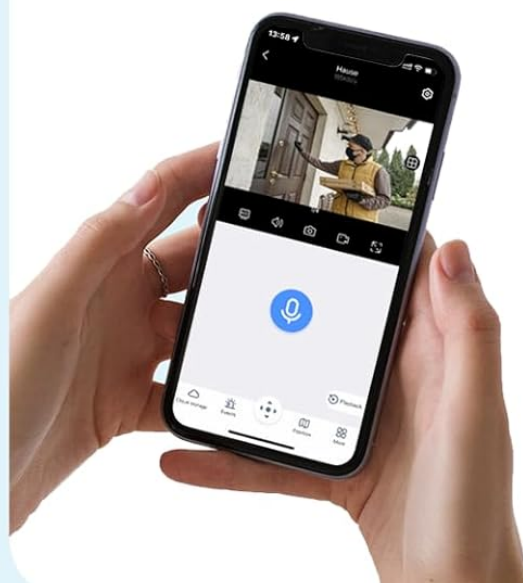


Figure 5: Easy Setup Guide

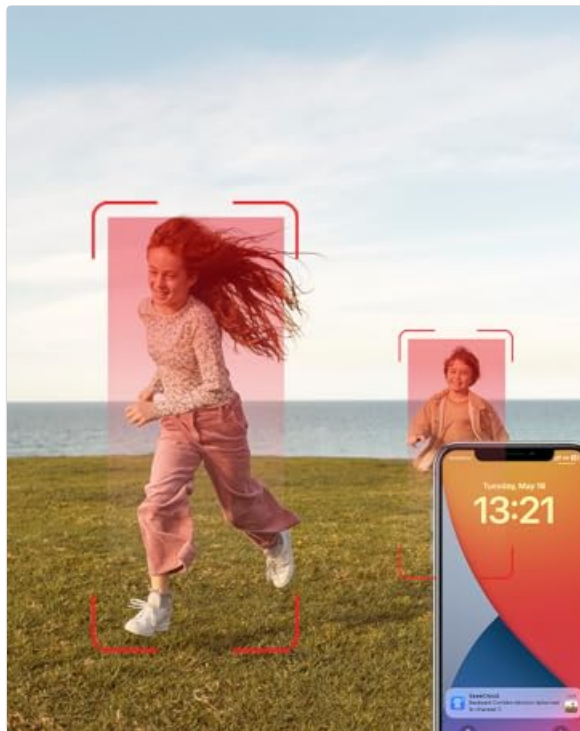


Figure 6: Remote Access via EseeCloud App

3.3 Alexa Integration

Your Tonton security camera system can be integrated with Amazon Alexa for voice control and live viewing on compatible devices.

1. Ensure your NVR is connected to the internet.
2. Open the Amazon Alexa App on your mobile device.
3. Navigate to 'Skills & Games' and search for 'EseeCloud'.
4. Enable the EseeCloud skill and link your EseeCloud account by entering your username and password.
5. Once linked, Alexa will discover your devices.
6. You can then use voice commands such as "Alexa, show me the [device name]" to view live feeds.

Work With Alexa

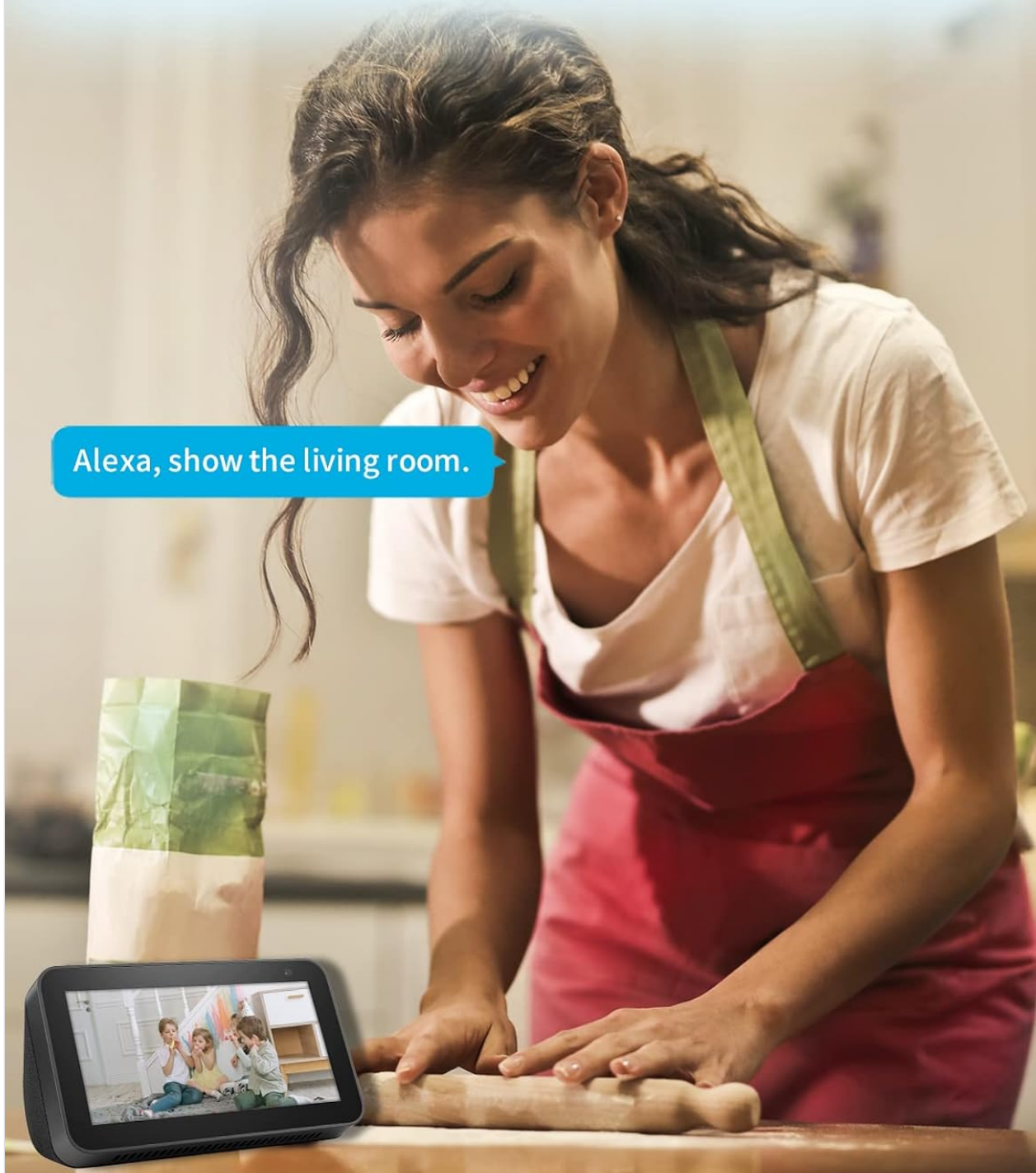


Figure 7: Alexa Integration Example

Video 1: How to work with Amazon Alexa. This video demonstrates the process of connecting your Tonton security system with Amazon Alexa for voice control and live viewing.

4. OPERATING INSTRUCTIONS

4.1 Camera Features

- **3MP Resolution:** Provides clear video at 2304x1296, which is 1.5 times clearer than 1080P.

- **110° Wide Viewing Angle:** Reduces blind spots compared to standard 80° cameras.
- **AI Human Detection:** Utilizes advanced algorithms to accurately identify human shapes, minimizing false alarms from leaves, clouds, or insects.
- **PIR Sensor:** Passive Infrared sensor detects heat, further reducing false motion alerts.
- **Spotlight & Siren Alarm:** Automatically illuminates the area and can deter intruders with an audible siren.
- **Color Night Vision:** Records ultra-clear color videos at night, with options for full color, infrared, or smart mode. Night vision range up to 100ft.
- **Two-Way Audio:** Built-in microphone and speaker allow for real-time communication.
- **IP66 Waterproof:** Durable metal casing ensures reliable operation in various weather conditions, from -30°C to 60°C (-22°F to 140°F).

AI Human Intelligent Detection



App Push



Email Warning



Figure 8: AI Human Intelligent Detection

Enhanced Color Night Vision



Figure 9: Enhanced Color Night Vision

2-Way Conversation in Real Time

See, Hear, and talk as if you were there



Figure 10: Two-Way Conversation in Real Time

Video 2: How the wireless camera system works. This video illustrates the functionality and features of the Tonton wireless camera system.

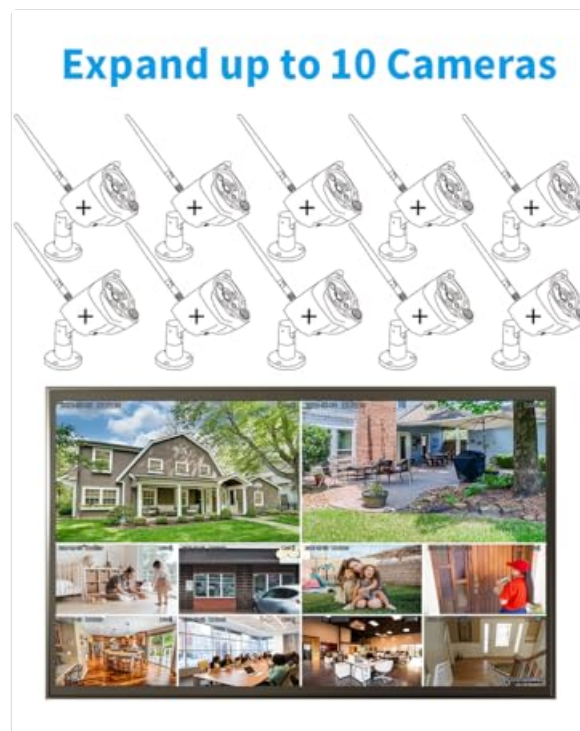


Figure 11: IP66 Waterproof Rating

4.2 NVR Features

- **10-Channel System:** Supports up to 10 cameras. Additional cameras can be purchased separately (search for B07RDDN923 or B0B2P8JBKNK for PTZ cameras).
- **2TB Hard Drive:** Pre-installed for 24/7 continuous recording, supporting over 50 days of video. Expandable up to 6TB.
- **H.265+ Video Compression:** Saves 50% of hard disk capacity compared to H.264 and provides smoother video playback.
- **Recording Modes:** Supports event-based and scheduled recording.
- **Alerts:** Mobile notifications, email alerts, camera siren, and NVR buzzer.
- **Remote Viewing:** Access live feeds and playback via the EseeCloud app or PC software.
- **USB Backup:** Allows for easy backup of recorded footage.
- **Cloud Storage:** Supported for additional data security.
- **Privacy Mask Area:** Up to 4 customizable privacy zones.

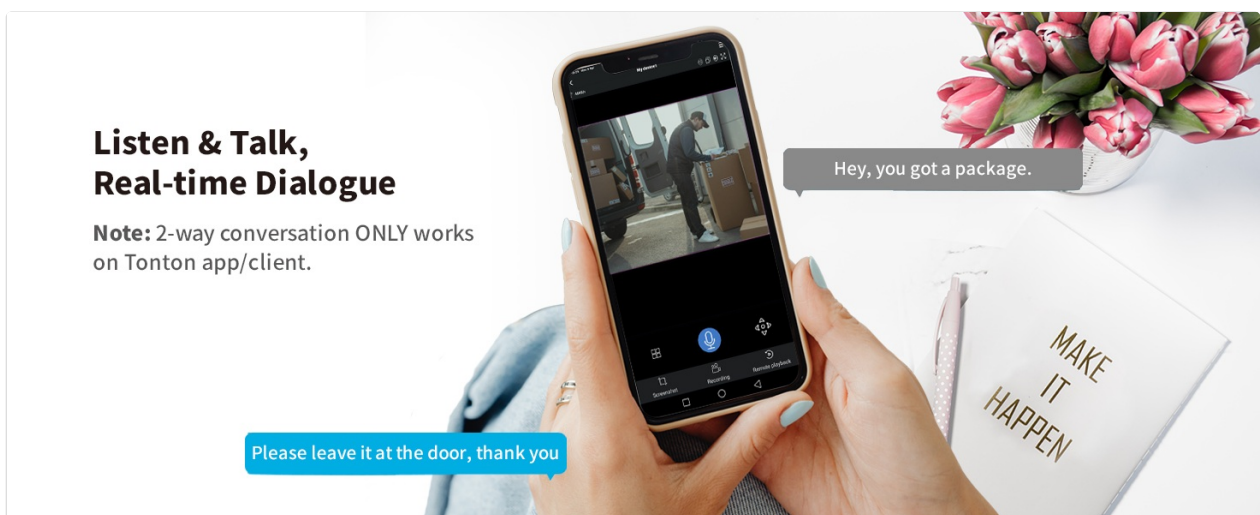


Figure 12: Continuous 24/7 Recording



Figure 13: H.265+ Video Compression Efficiency

5. MAINTENANCE

5.1 General Care

- Regularly clean camera lenses with a soft, damp cloth to ensure clear image quality.
- Ensure all power connections are secure and protected from moisture.
- Keep the NVR in a well-ventilated area to prevent overheating.

5.2 Hard Drive Management

The 2TB hard drive supports continuous recording. When the hard drive is full, it will automatically overwrite the oldest recordings. To maximize recording time, consider using the Motion+PIR detection mode, which records only when activity is detected.

6. TROUBLESHOOTING

- **No Camera Feed:** Ensure cameras are powered on and within range of the NVR's WiFi. Check power adapters and connections.
- **Poor Signal/Lag:** Position cameras closer to the NVR or consider using a WiFi repeater. Ensure no major obstructions are blocking the signal.
- **False Alarms:** Adjust the sensitivity of PIR and motion detection settings. Utilize AI Human Detection to filter out non-human movements.
- **Remote Access Issues:** Verify the NVR is connected to your internet router (via Ethernet or WiFi). Ensure the EseeCloud app is updated and your account is correctly linked.
- **Night Vision Clarity:** Ensure camera lenses are clean and free from obstructions. Adjust night vision mode settings (full color, infrared, or smart).
- **Two-Way Audio Not Working:** Check microphone and speaker settings in the app or NVR interface. Ensure volume levels are appropriate.

7. SPECIFICATIONS

Feature	Specification
Brand	Tonton
Model Number	D5309HN8-B
Connectivity Technology	Wireless
Video Capture Resolution	2K (3MP, 2304*1296)
Number of Channels	10
Memory Storage Capacity	2 TB (expandable up to 6TB)
Power Source	Corded Electric
Item Dimensions (L x W x H)	13.7 x 16.18 x 7.52 inches
Recommended Uses	Home Security
Compatible Devices	Cameras, Personal Computers, Smartphones, TV, Tablets
Other Camera Features	PIR Sensor, Spotlight, 2 Way Audio, Metal Housing, 110 degree Viewing Angle, IP66, Color Night Vision, 360 degree adjustable bracket, Work with Alexa
Low Light Technology	Night Color
Focal Length Description	F=3.6mm
Night Vision Range	100 Feet
Frame Rate	15fps
Recording Mode	Event, Schedule
Total USB Ports	2
Hardware Interface	DisplayPort

Lens Type	Wide Angle
Video Input	Wireless Signal Transmission
Viewing Angle	110 Degrees

8. WARRANTY AND SUPPORT

For any questions or technical assistance, please contact Tonton customer support:


- Email: sales@tontonsecurity.com
- Email (Manufacturer): kontakt@tontonsecurity.com




Please refer to the product packaging or official Tonton website for specific warranty details.



Figure 14: Scan for Support

Related Documents - D5309HN8-B

	<p>Tonton Wireless Mini NVR User Manual</p> <p>This user manual provides comprehensive instructions for setting up, configuring, and operating the Tonton Wireless Mini NVR system. It covers interface descriptions, hard disk installation, system connection, initial setup wizard, network configuration, date/time settings, storage management, password setup, app integration, menu navigation, recording settings, intelligent detection, video playback, video backup, adding IP cameras, and expanding wireless coverage.</p>
---	--

	<p>IP/Network Camera Instruction Manual</p> <p>Instruction manual for setting up and using an IP/Network Camera, covering connection, software installation, Wi-Fi settings, alarm management, and SD card recording.</p>
	<p>Night Owl Wired NVR Security System Quick Setup Guide</p> <p>Comprehensive quick setup guide for the Night Owl Wired NVR Security System, covering hardware connection, software configuration, and support resources. Learn how to install and set up your NVR and cameras easily.</p>
	<p>Night Owl BTWN8 Series Wi-Fi NVR Security System Quick Setup Guide</p> <p>Quick setup guide for the Night Owl BTWN8 Series Wi-Fi NVR Security System, detailing installation, Bluetooth wireless setup, manual TV/monitor connection, and system configuration.</p>