

Manuals+

[Q & A](#) | [Deep Search](#) | [Upload](#)

Manuals.plus /

- › [Master Class Sanyo](#) /
- › Master Class Sanyo 1000 Watts Prst Golden Mixer Grinder User Manual

Master Class Sanyo MCS-452

Master Class Sanyo 1000 Watts Prst Golden Mixer Grinder

Model: MCS-452

User Instruction Manual

1. INTRODUCTION

This manual provides essential information for the safe and efficient operation, maintenance, and troubleshooting of your Master Class Sanyo 1000 Watts Prst Golden Mixer Grinder. Please read this manual thoroughly before using the appliance for the first time and keep it for future reference.

The Master Class Sanyo Mixer Grinder is designed for various kitchen tasks, including wet grinding, dry grinding, and chutney preparation. Its robust construction and powerful motor ensure reliable performance. The coupler is specifically designed from a tougher plastic material to ensure firm engagement between the jars and the main body, contributing to continuous and efficient grinding performance.

2. SAFETY INFORMATION

WARNING: Read the manual before use.

- Always ensure the mixer grinder is placed on a stable, flat surface.
- Do not immerse the motor unit in water or any other liquid.
- Keep hands and utensils out of the jar while the appliance is operating.
- Ensure the lid is properly secured before starting the mixer grinder.
- Unplug the appliance from the power outlet when not in use, before cleaning, or before assembling/disassembling parts.
- Do not operate the appliance with a damaged cord or plug.
- This appliance is for household use only.
- Allow the motor to cool down between continuous grinding sessions to prevent overheating.
- The mixer grinder features overload protection to prevent motor damage. If the motor stops due to overload, switch off the appliance, remove some contents, and wait a few minutes before restarting.

3. PRODUCT COMPONENTS

Your Master Class Sanyo Mixer Grinder package includes the following components:

- 1 x Masterclass Sanyo 1000 Watts Prst Golden Mixer Grinder Motor Unit
- 1 x 1.5L Wet Grinding Jar (Large)
- 1 x 1L Dry Grinding Jar (Medium)
- 1 x 0.3L Chutney Jar
- 2 x Bullet Jars (530ml and 350ml, both with identical blades)
- 1 x 1.25L Juicer Jar



Figure 3.1: Master Class Sanyo Mixer Grinder motor unit with the large and small jars.



Figure 3.2: The 1.5-liter wet grinding jar with handle and transparent lid.



Figure 3.3: The 1-liter dry grinding jar with handle and transparent lid.



Figure 3.4: The 0.3-liter chutney jar with transparent lid.

4. SETUP INSTRUCTIONS

1. **Unpacking:** Carefully remove all components from the packaging. Retain the packaging for future storage or transport.
2. **Initial Cleaning:** Before first use, wash all jars and lids with warm soapy water. Rinse thoroughly and dry completely. Wipe the motor unit with a damp cloth.
3. **Placement:** Place the mixer grinder motor unit on a clean, dry, stable, and flat surface, away from heat sources and direct sunlight.
4. **Power Connection:** Ensure the power switch is in the 'OFF' position before plugging the appliance into a suitable power outlet.

5. OPERATING INSTRUCTIONS

The Master Class Sanyo Mixer Grinder features new age maxi grind technology with overload protection and an inbuilt pulse switch for better grinding control. Enhanced motor ventilation helps increase airflow and lowers heating during operation.

1. **Prepare Ingredients:** Cut ingredients into small pieces to facilitate grinding and prevent overloading.

2. **Select Jar:** Choose the appropriate jar based on the quantity and type of ingredients.
 - Wet grinding: Use the 1.5L large jar.
 - Dry grinding: Use the 1L medium jar.
 - Chutney: Use the 0.3L chutney jar.
 - Juicing: Use the 1.25L juicer jar.
 - Small quantity grinding (e.g., spices): Use the 530ml or 350ml bullet jars.
3. **Load Jar:** Place the ingredients into the selected jar. Do not overfill the jar beyond its maximum capacity mark.
4. **Secure Lid:** Place the lid firmly on the jar and ensure it is properly locked into place.
5. **Attach Jar to Motor Unit:** Place the jar onto the motor unit and twist gently until it locks securely. The coupler is designed for firm engagement.
6. **Power On:** Plug the mixer grinder into a power outlet.
7. **Grinding:** Turn the knob control to the desired speed setting. For short bursts or to clear blockages, use the pulse function.
8. **Monitor:** Observe the grinding process. If the motor strains or stops, switch off immediately.
9. **Switch Off:** Once grinding is complete, turn the knob control to the 'OFF' position and unplug the appliance.
10. **Remove Jar:** Carefully remove the jar from the motor unit and then remove the lid.

Understanding Grinding Needs:

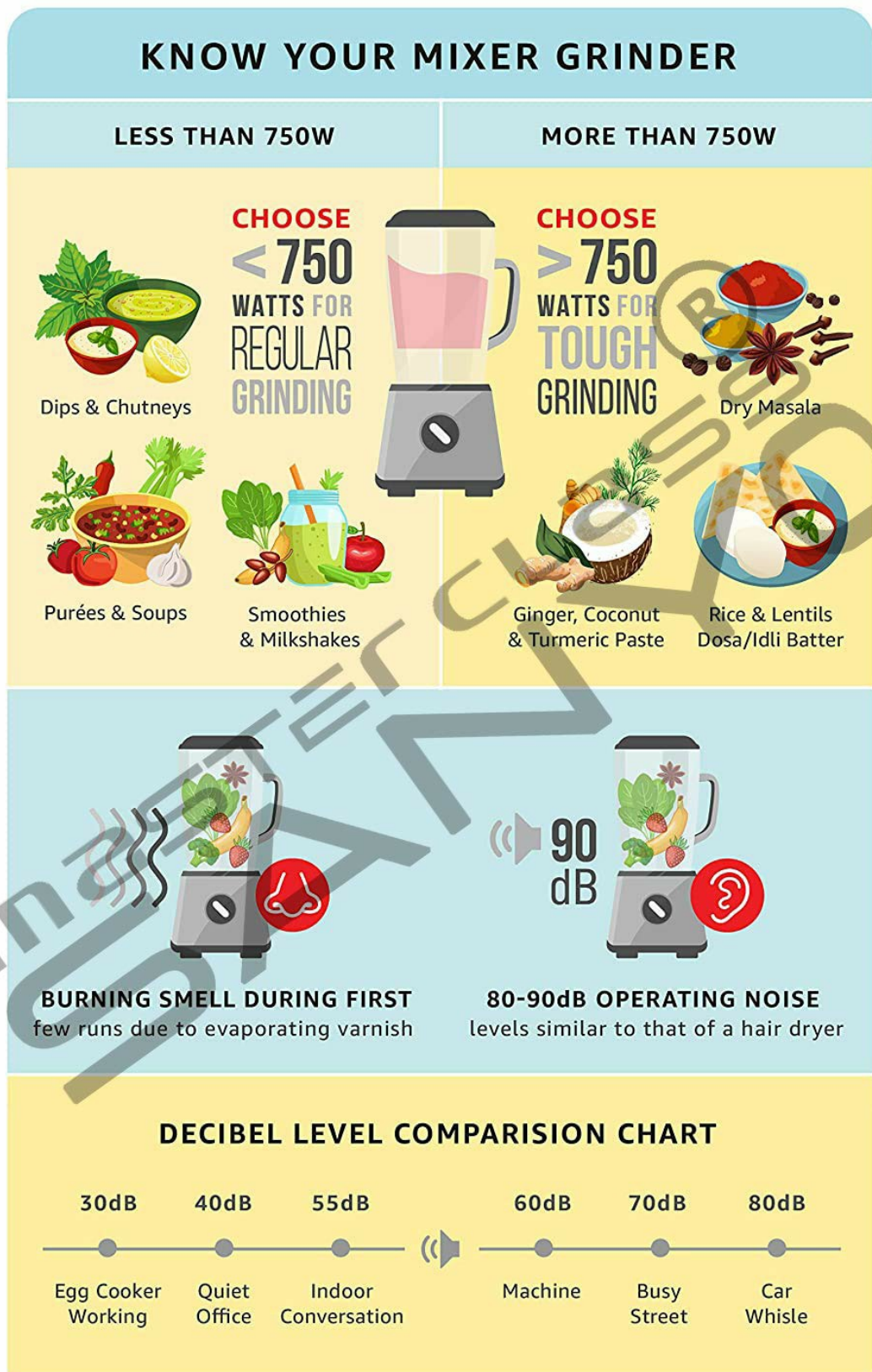


Figure 5.1: Guide to choosing mixer grinder wattage for various grinding tasks and decibel level comparison.

As shown in Figure 5.1, for regular grinding tasks like dips, chutneys, purees, smoothies, and milkshakes, a mixer grinder with less than 750W is typically sufficient. For tougher grinding tasks such as dry masala, ginger, coconut, turmeric paste, or dosa/idli batter, a mixer grinder with more than 750W is recommended. Your Master Class Sanyo Mixer Grinder with 1000 Watts is well-suited for tough grinding.

During the first few runs, you might notice a burning smell. This is normal and due to evaporating varnish from the motor. Operating noise levels are typically between 80-90dB, similar to a hair dryer. Refer to the

decibel level comparison chart for context.

6. MAINTENANCE AND CARE

- Cleaning Jars and Lids:** After each use, immediately wash the jars and lids with warm water and mild dish soap. Use a brush to clean the blades carefully. Rinse thoroughly and dry completely before storing.
- Cleaning Motor Unit:** Wipe the motor unit with a soft, damp cloth. Do not use abrasive cleaners or immerse the motor unit in water.
- Storage:** Store the mixer grinder and its accessories in a clean, dry place, away from direct sunlight and moisture.
- Blade Care:** The blades are sharp. Handle them with extreme care during cleaning and assembly.

7. TROUBLESHOOTING

Problem	Possible Cause	Solution
Mixer grinder does not start.	Not plugged in; power outage; jar not properly locked; overload protector tripped.	Check power connection; check fuse/breaker; ensure jar is securely locked; reduce contents and wait for overload protector to reset (approx. 2-3 minutes).
Burning smell during operation.	New motor varnish burning off (initial use); motor overheating due to continuous use or overload.	Normal for first few uses. If persistent or accompanied by smoke, switch off immediately. Allow motor to cool down. Do not operate continuously for long periods.
Loud noise during operation.	Normal operating noise (80-90dB); jar not properly seated; ingredients too hard or large.	Ensure jar is securely locked. Cut ingredients into smaller pieces. If noise is unusual or excessive, discontinue use and contact service.
Grinding is not smooth.	Insufficient liquid (for wet grinding); ingredients too large; worn blades.	Add more liquid if necessary. Cut ingredients smaller. If blades are dull, consider replacement.

8. SPECIFICATIONS

Feature	Detail
Brand	Master Class Sanyo
Model Number	MCS-452
Power Consumption	1000 Watts
Colour	Prst Golden
Controls Type	Knob Control
Item Weight	2 kg

Feature	Detail
Item Dimensions (LxWxH)	15 x 10 x 20 Centimeters
Country of Origin	India
Manufacturer	Mytri Marketing, Mumbai 400104, MAHARASHTRA, Tirupati marketing

9. WARRANTY AND SUPPORT

Warranty Information:

Warranty on the motor is for One Year within India. The warranty does not cover any damage resulting from adaptations and adjustments made to the product. It also does not cover risks to the product caused by accident, lightning, water, fire, other acts of God, improper ventilation, dropping, excessive shock, or any external cause beyond the company's control.

Warranty Service:

Within the warranty period, authorized service centers will repair or replace parts covered under warranty. Manufacturers do not provide extended warranty; extended warranty options may be provided by Amazon third-party vendors. The decision taken by the company regarding warranty claims would be final. All warranty matters are subject to Mumbai Jurisdictions.

Manufacturer and Seller Information:

Manufacturer: Mytri Marketing, Mumbai 400104, MAHARASHTRA, Tirupati marketing

Sold by: Tirupati Marketing (Factory Outlet) Since 1984

For support or service inquiries, please contact the seller or an authorized service center.