

Simplex 4006-9101

Simplex 4006-9101 Standard Fire Alarm Control Panel User Manual

Model: 4006-9101 (Item Model Number: 400 9101)

INTRODUCTION

This manual provides comprehensive instructions for the installation, operation, and maintenance of the Simplex 4006-9101 Standard Fire Alarm Control Panel. Designed for areas requiring five to ten initiating zones, this panel offers flexible initiating circuit monitoring, extensive programmable control capabilities, and an LCD for annunciated circuit-specific 20-character custom labels. Proper understanding and adherence to these instructions are crucial for the safe and effective functioning of the fire alarm system.

PRODUCT OVERVIEW

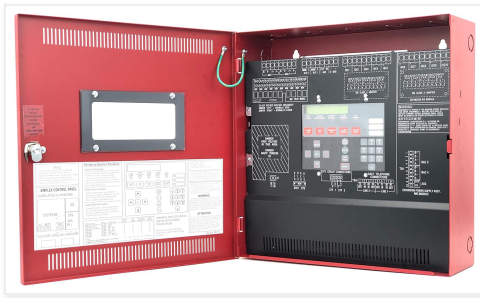


The Simplex 4006-9101 is a robust fire alarm control panel housed in a distinctive red enclosure. It features a central display and an array of control buttons for system management. This panel is designed for professional hard-wired installations and includes essential components for a comprehensive fire safety system.

Key Features:

- 5 Class B Initiating Device Circuits (IDCs)
- 2 Class B/Class A Notification Appliance Circuits (NACs)
- 3 Ampere power supply with integrated battery charger

- On-board Digital Alarm Communicator Transmitter (DACT)
- Operates on 120/240 VAC, 50/60 Hz (auto-selecting)
- LCD annunciated circuit-specific 20 character custom labels



The interior of the control panel is meticulously organized, featuring the main circuit board, clearly labeled wiring terminals for various circuits (IDCs, NACs, power), and internal documentation including emergency operation procedures and wiring diagrams. This design facilitates professional installation and maintenance.

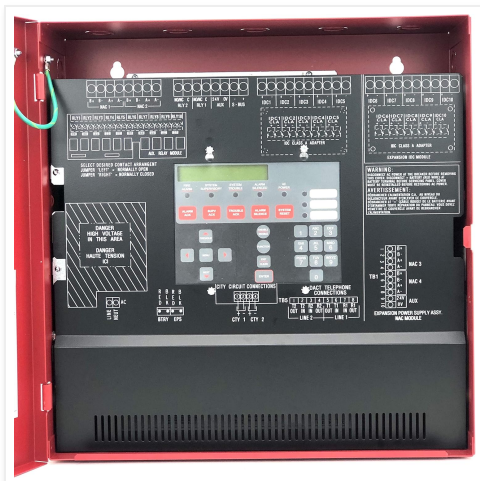
SETUP AND INSTALLATION

The Simplex 4006-9101 Fire Alarm Control Panel requires professional hard-wired installation. It is crucial that installation is performed by qualified personnel in accordance with all local and national electrical and fire safety codes.

Included Components

- Simplex 4006-9101 Control Panel Unit
- Key for panel access
- Wiring harness (as applicable)
- Documentation (User Manual, Installation Guide, Wiring Diagrams)
- Compatible devices such as Smoke Detector, Pull Station, Horn/Strobe (may be sold separately or included as part of a system package)

Wiring and Connections



Refer to the detailed wiring diagrams provided within the panel's internal documentation and the separate installation guide for precise connection instructions. Ensure all power connections (120/240 VAC) are made correctly and safely. Connect initiating devices (smoke detectors, pull stations) to the IDC terminals and notification appliances (horns, strobes) to the NAC terminals.



The provided wiring harness facilitates specific internal connections. Ensure these are securely attached according to the installation diagrams.

Power Supply and Battery

The panel includes a 3 Ampere power supply with a battery charger. Connect the primary AC power source (120/240 VAC, 50/60 Hz) to the designated terminals. Install backup batteries (not typically included with the panel, refer to specifications for type and capacity) to ensure continuous operation during power outages.

OPERATING THE CONTROL PANEL

The Simplex 4006-9101 features an intuitive control interface with an LCD display and tactile buttons. Access to certain functions may require the use of the provided key.



The inside of the panel door provides a quick reference guide for emergency operation procedures and a layout of the control buttons. This includes instructions on how to acknowledge alarms, silence signals, and reset the system.

Basic Operations

- **Acknowledging Alarms:** When an alarm or trouble condition occurs, the panel will annunciate it visually and audibly. Press the "ACKNOWLEDGE" button to silence the panel's internal buzzer and acknowledge the event.
- **Silencing Signals:** After an alarm is acknowledged, the notification appliances (horns, strobes) will continue to activate. Press the "SIGNAL SILENCE" button to silence these devices.
- **Resetting the System:** Once the alarm condition has been resolved, press the "SYSTEM RESET" button to clear the alarm and restore the system to its normal operating state.
- **LCD Display:** The LCD provides detailed information about system status, events, and circuit-specific labels.

Navigate through messages using the arrow keys.



The provided key is used to access the control panel's internal components and may be required to enable certain operational modes or to reset the system after specific events. Keep this key in a secure, accessible location.

MAINTENANCE

Regular maintenance is essential to ensure the reliable operation of your Simplex 4006-9101 Fire Alarm Control Panel. All maintenance procedures should be performed by qualified fire alarm technicians.

Routine Checks

- **Daily/Weekly:** Verify the "NORMAL" indicator light is illuminated. Check the LCD for any trouble messages.
- **Monthly:** Test all initiating devices (smoke detectors, pull stations) and notification appliances (horns, strobes) in accordance with local codes and manufacturer guidelines.
- **Annually:** Conduct a full system inspection and test by a certified fire alarm technician. This includes battery load tests, verification of all circuits, and calibration checks.

Cleaning

Keep the exterior of the control panel clean using a soft, dry cloth. Do not use abrasive cleaners or solvents. Ensure ventilation openings are free from dust and debris.

TROUBLESHOOTING

This section provides guidance for common issues. For complex problems or persistent trouble conditions, contact a qualified fire alarm technician.

Problem	Possible Cause	Solution
Panel displays "TROUBLE"	Open circuit, ground fault, or device malfunction.	Check the LCD for specific trouble messages. Inspect wiring for damage. Contact technician for diagnosis.
Alarm sounds continuously after reset	Alarm condition still present or device not reset.	Ensure the cause of the alarm (e.g., smoke) is cleared. Manually reset any activated devices (e.g., pull station).
No power to panel	AC power loss or battery issue.	Check AC power supply. Verify battery connections and charge. Replace batteries if necessary.
Keypad unresponsive	Temporary software glitch or hardware issue.	Try a system reset (if possible). If problem persists, contact technician.

SPECIFICATIONS

Attribute	Detail
Manufacturer	Simplex
Part Number	4006-9101
Item Model Number	400 9101
Color	Red
Power Source	Battery Powered (with AC input)
Installation Method	Professional Hard-wired
Item Package Quantity	1
Included Components	Smoke Detector, Pull Station, Horn/Strobe (as compatible devices)
Connectivity Technology	Wired
Alert Type	Motion Only (Note: This might be a generic category, actual alerts are fire/trouble)
Control Method	Touch (via keypad)
Unit Count	1.0 Count
Initiating Device Circuits (IDCs)	5 Class B
Notification Appliance Circuits (NACs)	2 Class B/Class A
Power Supply	3 A with battery charger
Voltage	120/240 VAC, 50/60 Hz (autoselect)
Digital Alarm Communicator Transmitter (DACT)	On-board

WARRANTY INFORMATION

The Simplex 4006-9101 Standard Fire Alarm Control Panel comes with a **12-month warranty** from the date of purchase. This warranty covers defects in materials and workmanship under normal use. For warranty claims or detailed terms and conditions, please refer to the official Simplex warranty documentation or contact Simplex customer support.

SUPPORT AND CONTACT




For technical assistance, service, or further information regarding your Simplex 4006-9101 Fire Alarm Control Panel, please contact Simplex customer support or a certified fire alarm system professional.

Manufacturer: Simplex

Website: www.simplex-fire.com

Professional Installation/Service: Always consult with a qualified and certified fire alarm system installer or service provider for any installation, repair, or complex troubleshooting.

Related Documents - 4006-9101

	<p>Simplex 4005 Series LifeAlarm Fire Alarm Control Panels - Technical Manual</p> <p>Explore the features, specifications, and applications of the Simplex 4005 Series LifeAlarm Fire Alarm Control Panels. This document provides detailed information for system integrators and facility managers.</p>
	<p>Simplex 4090-9101, 4090-9106 Monitor ZAM Installation Instructions</p> <p>Installation instructions for Simplex 4090-9101 and 4090-9106 Monitor Zone Adapter Modules (ZAMs). Covers mechanical installation, address setting via DIP switches, and electrical connections for IDNet and MAPNET II systems.</p>
	<p>Kidde Cavius Fire Alarm Controller 9101 User Guide</p> <p>User guide for the Kidde Cavius Fire Alarm Controller, model 9101. Provides information on features, installation, operation, testing, and troubleshooting for interconnected wireless smoke and heat alarms.</p>
	<p>CAR PLAYER Operation Manual: Installation, Features, and Troubleshooting</p> <p>Comprehensive operation manual for the CAR PLAYER, detailing specifications, installation guides, rear interface connections, smartphone integration (iPhone Mirrorlink, Apple CarPlay, Android Mirrorlink, Android Auto), and troubleshooting common issues. Includes wiring diagrams and FCC compliance information.</p>
	<p>Simplex 4004 Fire Alarm System Installation and Operation Manual</p> <p>This manual provides comprehensive installation and operation instructions for the Simplex 4004 Fire Alarm Control Panel (FACP). It covers system overview, requirements, installation procedures, operating instructions, glossary of terms, and battery selection. The 4004 FACP is a general alarm, battery-backed, electrically supervised system designed for fire detection and notification.</p>
	<p>Simplex 4010ES Fire Alarm Control Panel Operator's Manual</p> <p>This manual provides comprehensive instructions for operating the Simplex 4010ES Fire Alarm Control Panel (FACP). It covers basic concepts, alarm conditions, trouble conditions, supervisory conditions, advanced functions, and system test procedures. Learn how to acknowledge alarms, silence alarms, reset the system, and manage various system events.</p>



[\[pdf\]](#) User Manual Instructions Specifications

Simplex 4006 9101 Installation Programming Operation Manual Rev B 466 Top Downloads Fire Alarm Resources Free fire alarm manuals documents installation instructions and technical specifications tmstv 1676546410 firealarmresources 33429 |||

Technical Manuals Online - <http://www.tech-man.com> firealarmresources.com

Copyright and Trademark ... er 1. Overview This publication describes how to install, configure, operate, program, and test an **4006-9101** and 4006-9121 includes door-mounted annunciator Fire Alarm Control Panel FACP . In case...

lang:en **score:40** filesize: 1.93 M page_count: 78 document date: 2022-03-09



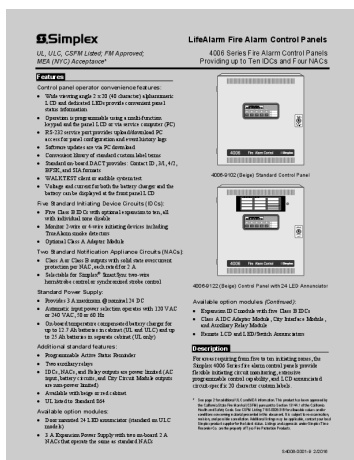
[\[pdf\]](#) User Manual

firealarmresources 2013 06 Simplex 4006 9101 Installation Programming Operation Manual Rev BGood Starter Panels Fire Alarm General Discussion The Panel ForumsSimplex Bfirealarmresources B |||

Technical Manuals Online - <http://www.tech-man.com> Copyright and Trademarks

2005 Tyco Safety Pro ... er 1. Overview This publication describes how to install, configure, operate, program, and test an **4006-9101** and 4006-9121 includes door-mounted annunciator Fire Alarm Control Panel FACP . In case...

lang:en **score:28** filesize: 1.32 M page_count: 78 document date: 2005-08-14



[\[pdf\]](#) User Manual Datasheet Declaration of Conformity Label

Microsoft Word S4006 0001 doc areilly ficha tecnicaPanel de control contra incendio 4006 Marca

Simplexcdn shopify s files 1 0269 1088 3897 v 1670967791 LifeAlarm Fire Alarm Control Panels

SelectMepGet Data Sheetficha tecnicaSimplex current limited smoke detectors or electronic heat see list

on page 4 as well manual stations and other compatible contact closure Simplex 9101 Standard Panel

RedPanel SimplexS4006 9S4006 9selectmep 2024 08 9cdn SimplexSimplex 9801 BDA BIM

SolutionsS4006 16709677919780611 app netsuite core media nl id 237087 c 9780611 h

NwWm5urkXEVAs XD5afG2bgo1duTOMvuG4mealRRjXwyWajQ xt SelectMepProduct DatasheetGet

SolutionsSimplex 99780611 xtselectmep |||

UL, ULC, CSFM Listed; FM Approved; MEA NYC Acceptance* LifeAlarm Fire Alarm Control Panels 4006 S ... local energy . Reporting includes Alarm, Supervisory, and Trouble. Control Panel Model 4006-9102 **4006-9101** 4006-9122 4006-9121 Color Beige Red Beige Red Description Standard fire alarm control pa...

lang:en **score:20** filesize: 390.32 K page_count: 8 document date: 2016-02-25



YURSTAT
SOLÜSYONLARI

Yeni Kapıdan Bul, Sırtıcı Kal. 4. Kat, Etiler, Beşiktaş / İstanbul

0212 244 2403
0212 244 2403
www.yurstat.com.tr

Tel: 0212 244 2403
Fax: 0212 244 2403
E-posta: info@yurstat.com.tr
www.yurstat.com.tr



Ölçüler

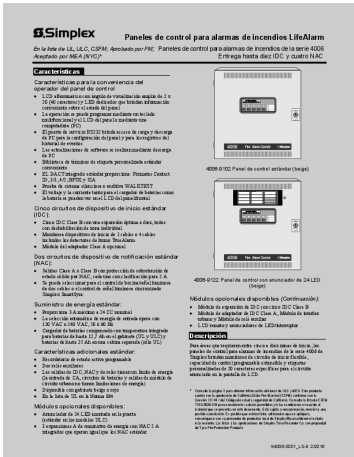
18200	DİSC. (DİS2520 POST KABİNET W/ CLK)
8006-41002	CONVENTIONAL SMALL PA BEİGE
2080-9020	DİSC. (D 2080 DUAL LINE DACT 220V)
18206-0	WİRC (DİSC 1820 POST EXİSTON GRAB)
1820-3111	SİMPLES 500 120V/60HZ
1820-3115	SİMPLES 125-0
18206-736	PC BOARD TRANSİVER ASSEMBLY MAPNET İF ALARM ZONE
362-464	DISC. EXTEN 30W 6952-464 (2B WOLT POWER SUPPLY 120VAC SOURCE)
6003-5201	NAC EXTENSİON 120VAC, 120V
1820-3110	CENTENAL 120V
18206-5161	CONVENTIONAL FREE ALARM PANEL

Amkânlar

Garanti: 12 ay
Bu ürünler bir Türkiye içi
garanti kapsamına girer. Bu kapsam
altında, ürünler garanti kapsamına
alınmaz. Ürünler
info@yurstat.com.tr e
gönderilerek teslimat
konusu için
teknik destek
alınabilir.
Yurstat ürünleri, Türkiye
İçişleri Bakanlığı, Polis,
Emniyet, Jandarma gibi kurumlar
tarafından kullanılmaktadır.
Yurstat, Türkiye
İçişleri Bakanlığı, Polis,
Emniyet, Jandarma gibi kurumlar
tarafından kullanılmaktadır.
Yurstat, Türkiye
İçişleri Bakanlığı, Polis,
Emniyet, Jandarma gibi kurumlar
tarafından kullanılmaktadır.
Yurstat, Türkiye
İçişleri Bakanlığı, Polis,
Emniyet, Jandarma gibi kurumlar
tarafından kullanılmaktadır.

[illegible]

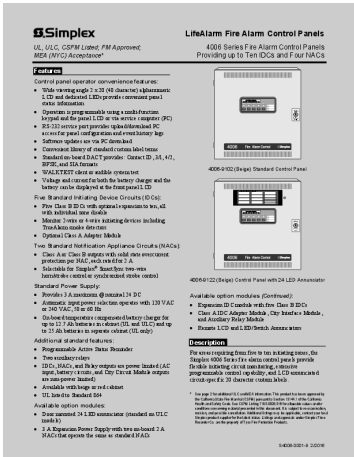
[\[pdf\]](#)



[pdf] Declaration of Conformity

Microsoft Word S4006 0001 LS 8 doc areilly 9 Fire Detection Product Publications simplex fire en us DocumentsandMedia 4006 |||

Paneles de control para alarmas de incendios LifeAlarm En la lista de UL, ULC, CSFM; Aprobado por F ... ga local , La informacin incluye Alarma, Supervisor y Problema. Panel de control Modelo 4006-9102 **4006-9101** 4006-9122 4006-9121 Color Beige Rojo Beige Rojo Descripcin Panel de control de la alarma... lang:es **score:17** filesize: 401.59 K page_count: 8 document date: 2016-02-25



[pdf] Specifications Declaration of Conformity Label

Microsoft Word S4006 0001 doc areilly LifeAlarm Fire Alarm Control Panels Specifications 4 9 2 2016 Power Ratings AC Input Voltage 120 VAC 60 Hz 220 230 240 50 auto select Current Standard A maximum @ input 1 5 simplex fire en us DocumentsandMedia 4006 |||

UL, ULC, CSFM Listed; FM Approved; MEA NYC Acceptance* LifeAlarm Fire Alarm Control Panels 4006 S ... local energy . Reporting includes Alarm, Supervisory, and Trouble. Control Panel Model 4006-9102 **4006-9101** 4006-9122 4006-9121 Color Beige Red Beige Red Description Standard fire alarm control pa... lang:en **score:17** filesize: 390.32 K page_count: 8 document date: 2016-02-25



Simplex 4005 Series LifeAlarm Fire Alarm Control Panels - Technical Manual

Explore the features, specifications, and applications of the Simplex 4005 Series LifeAlarm Fire Alarm Control Panels. This document provides detailed information for system integrators and facility managers.

lang:en **score:13** filesize: 373.5 K page_count: 16 document date: 2012-01-08