



[Manuals.plus](#) /

› [Enga](#) /

› Enga 12-Inch Rainfall Shower System with Body Jets and Handheld Spray (Model EG-KT-34\*) Instruction Manual

## Enga EG-KT-34\*

# Enga 12-Inch Rainfall Shower System with Body Jets and Handheld Spray (Model EG-KT-34\*) Instruction Manual

Model: EG-KT-34\* | Brand: Enga

[Introduction](#)   [Safety Information](#)   [Package Contents](#)   [Setup & Installation](#)   [Operating Instructions](#)   [Maintenance](#)   [Troubleshooting](#)   [Specifications](#)   [Warranty](#)   [Support](#)

## 1. INTRODUCTION

Thank you for choosing the Enga 12-Inch Rainfall Shower System with Body Jets and Handheld Spray. This manual provides detailed instructions for the safe installation, operation, and maintenance of your new shower system. Please read this manual thoroughly before installation and keep it for future reference.



Figure 1: Enga 12-Inch Rainfall Shower System (Chrome)

## 2. SAFETY INFORMATION

Please observe the following safety precautions during installation and use:

- Ensure all water supply lines are turned off before beginning installation.
- Professional installation is recommended for optimal performance and safety.
- Verify that all connections are secure and leak-free before concealing any plumbing.
- The Enga shower faucet sets are cUPC certified to ensure safe water temperature and prevent scalding.
- Do not use abrasive cleaners or harsh chemicals on the chrome finish.

## 3. PACKAGE CONTENTS

Carefully unpack your Enga shower system and ensure all components are present:

- 1 × 12-inch Square Rain Shower Head (304 stainless steel)
- 1 × Handheld Shower Head (Brass)
- 4 × Body Jets (Brass)
- 1 × Pressure Balance Valve (Brass)
- 1 × Shower Arm (Brass)
- 1 × Shower Holder (Brass)
- 1 × 59-inch Shower Hose (304 stainless steel)
- Mounting accessories and user manual



Figure 2: Package Includes (Illustrative)

## 4. SETUP & INSTALLATION

Installation of the Enga 12-Inch Rainfall Shower System requires careful attention to plumbing connections. All connections are US standard NPT 1/2".

### 4.1. Rough-in Valve Installation

The pressure balance valve is the core of your shower system. Ensure it is securely mounted within the wall studs at the correct depth. The valve body is made of solid brass for durability.

# VS

## SHOWER VALVE IS THE HEART OF SHOWER SYSTEM



 Integrated forging, solid brass construction, heavy duty, surface brightness, high density, against leaks and anti-deformation. Equipped with high quality case protection.




 Sand casting, rusts easily, low quality brass, light weight, and the inferior case doesn't protect the inner brass.

Figure 3: Enga Shower Valve Construction

Refer to the detailed installation video for step-by-step guidance on plumbing connections and valve placement:

Your browser does not support the video tag.

Video 1: Installation Guide for Enga 12 Inch Rain Shower System. This video demonstrates the complete installation process for the shower system, including rough-in valve placement and pipe connections.

### 4.2. Shower Head and Arm Installation

Install the shower arm into the wall outlet, ensuring a tight seal with plumber's tape. Attach the 12-inch square rain shower head to the shower arm. The shower head features a 360° ball joint for adjustable angle.



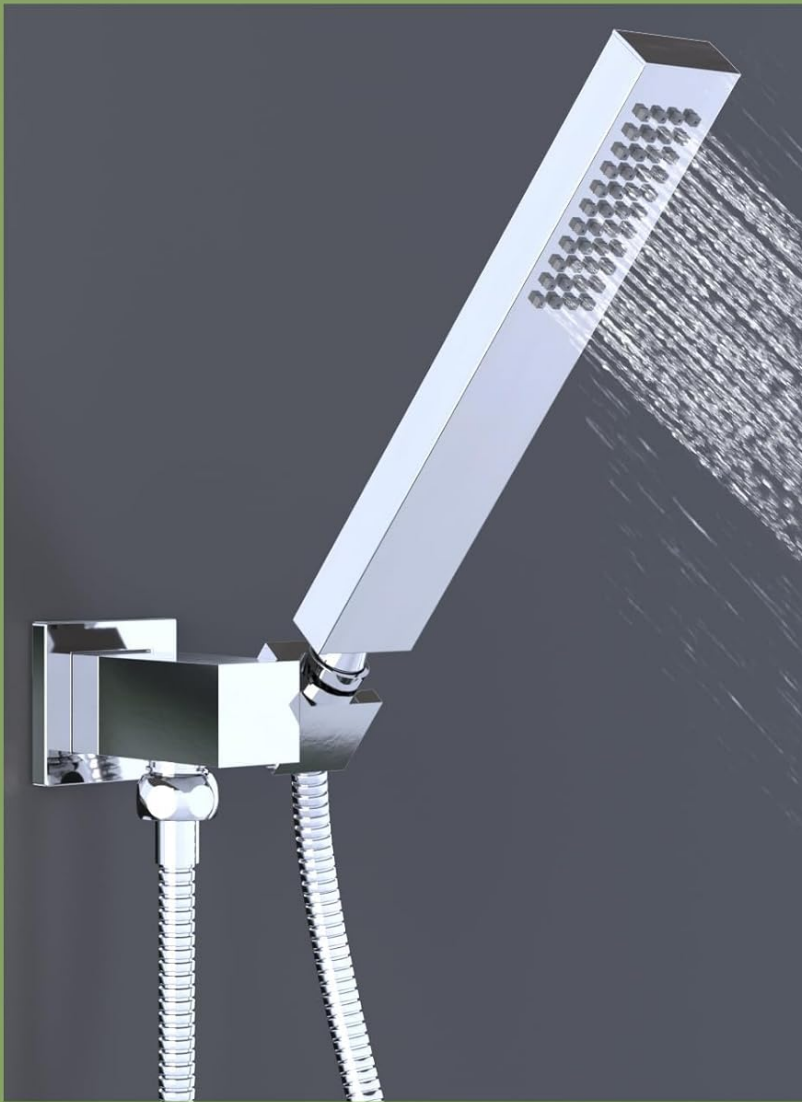
Figure 4: Rain Shower Head with Air Injection Technology and Adjustable Ball Joint

### 4.3. Handheld Shower and Body Jet Installation

Mount the shower holder and connect the 59-inch shower hose to the handheld shower head. Install the four body jets at desired heights, ensuring they are securely threaded into the NPT 1/2" outlets.

# High pressure

Handheld shower head



Self-cleaning Nozzles



360° rotation

NPT 1/2"

Solid brass



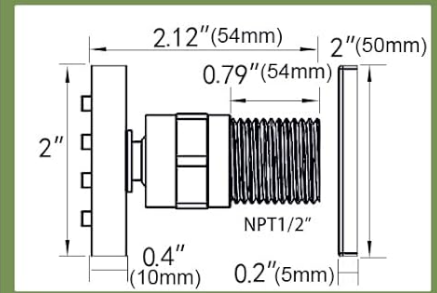
• 304 stainless steel

59" Shower hose

Figure 5: Handheld Shower Head and Hose



# 2inch MASSAGE BODY JETS



Made of solid brass



Silicone nozzles

Figure 6: 2-Inch Massage Body Jets

## 5. OPERATING INSTRUCTIONS

Your Enga shower system offers a 3-mode shower experience with easy controls:

### 5.1. Water Flow and Temperature Control

The single lever handle controls both water flow and temperature. Move the lever left for hot water and right for cold water. Adjust up or down for desired flow intensity.

# 3 Functions Shower Diverter

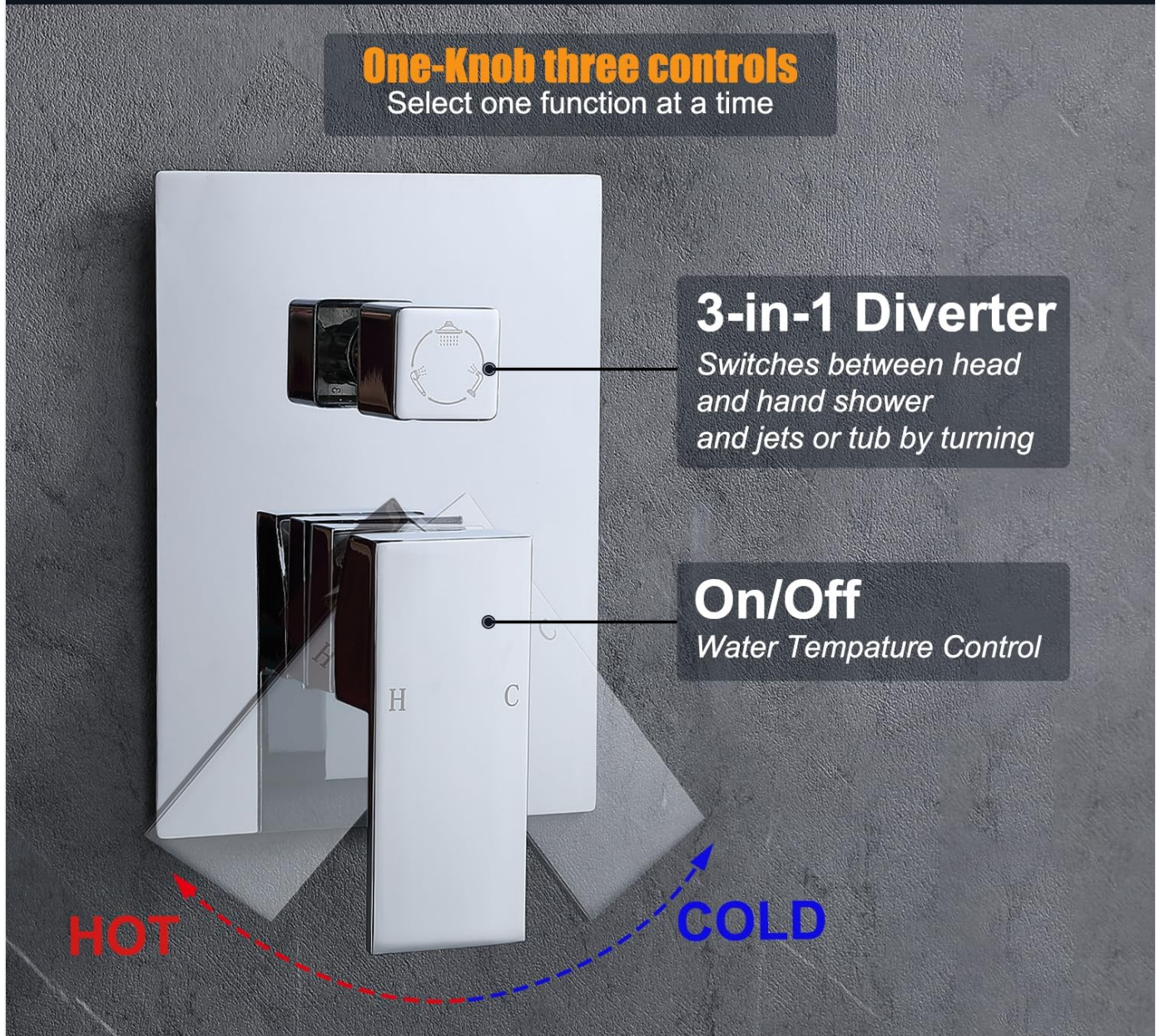


Figure 7: 3-Function Shower Diverter

## 5.2. Function Selection

Use the upper knob to switch between the three shower functions: rain shower head, body jets, or handheld spray. Select one function at a time for optimal performance.

Your browser does not support the video tag.

Video 2: 12-inch Rainfall Shower System Overview. This video demonstrates the different spray modes and functions of the shower system.

Your browser does not support the video tag.

Video 3: Enga 2 Handle 12-inch Shower with Body Spray Jets. This video highlights the functionality of the rain shower and body jets.

## 6. MAINTENANCE

Regular cleaning and maintenance will ensure the longevity and optimal performance of your Enga shower system.

## 6.1. Cleaning Nozzles

The rain shower head and body jets feature easy-clean silicone nozzles. Simply rub your finger across the nozzles to dislodge any mineral buildup.



Figure 8: Easy Clean Nozzles on Rain Shower Head

## 6.2. Finish Care

Clean the chrome finish with a soft, damp cloth and mild soap. Avoid abrasive cleaners, steel wool, or harsh chemicals, as these can damage the finish.

## 7. TROUBLESHOOTING

If you encounter any issues with your shower system, refer to the following common solutions:

- **Low Water Pressure:** Check if the main water supply is fully open. Ensure nozzles are clean and free of mineral buildup.

- **Leaking:** Verify all connections are tightened correctly. Ensure plumber's tape was used on threaded connections.
- **Temperature Fluctuations:** The pressure balance valve is designed to prevent sudden temperature changes. If fluctuations occur, consult a professional plumber.

## 8. SPECIFICATIONS

---

Feature	Detail
Brand	Enga
Model Number	EG-KT-34*
Color	Chrome
Material	Brass, Stainless Steel
Finish Type	Chrome
Number of Handles	2
Mounting Type	Wall Mount
Head Size	12 inches
Item Weight	6.89 Kilograms
Certifications	cUPC certified

## 9. WARRANTY INFORMATION

---

Enga provides the following warranty for this product:

- For original consumer purchasers (homeowners): Five (5) years from the date of purchase for as long as the original consumer purchaser owns both the product and the home in which it was originally installed. (LED device warranty period is one year).
- For commercial purchasers: Two (2) years from the date of purchase.
- This warranty covers defects in material and workmanship.
- This warranty is non-transferable and does not cover Enga products purchased from unauthorized sellers.

## 10. CUSTOMER SUPPORT

---

For any questions, concerns, or assistance with installation, please reach out to our responsive and helpful customer service team via Amazon message or email. We also offer remote installation assistance.



Figure 9: Enga Customer Support

