

ROBOTIME DG109

Robotime Simon's Coffee Miniature House 3D Puzzle Instruction Manual

Model: DG109

INTRODUCTION

This instruction manual provides detailed guidance for assembling your Robotime Simon's Coffee Miniature House 3D Puzzle (Model DG109). This DIY kit allows you to construct a charming miniature coffee shop scene with intricate details and functional elements. Please read all instructions carefully before beginning assembly to ensure a smooth and enjoyable building experience.



A complete view of the assembled Simon's Coffee miniature house, showcasing its intricate details and cozy atmosphere.

SETUP AND ASSEMBLY

1. Unboxing and Inventory

Carefully open the package and lay out all components. Verify that all parts listed in the kit's inventory sheet are present. Familiarize yourself with the different types of materials, such as wood pieces, paper cutouts, fabric, and small accessories.



The product packaging alongside the various raw materials and pre-cut pieces included in the kit, ready for assembly.

2. Tools Required

While some basic tools may be included, it is recommended to have the following additional tools for optimal assembly:

- Precision scissors or craft knife
- Ruler
- Tweezers (for small parts)
- Wood glue or quick-drying craft glue (ensure it dries clear)
- Small paintbrushes (for details or glue application)
- Sandpaper (fine-grit, for smoothing edges)

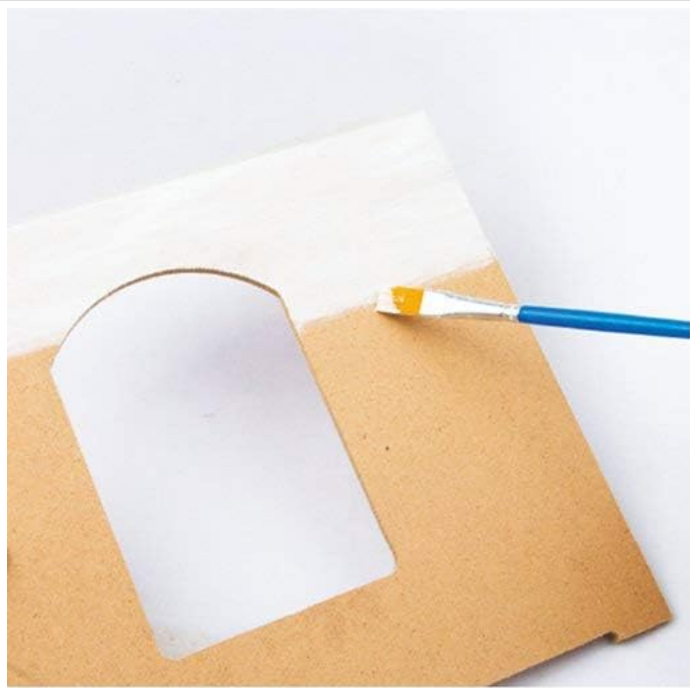
3. Preparation

Before starting, ensure you have a clean, well-lit, and spacious workspace. Organize your parts by type or step as indicated in the included diagram. Read through the entire assembly guide once to understand the overall process.

4. Assembly Overview

The assembly process typically involves:

1. **Cutting and Punching:** Carefully cut out paper and fabric pieces, and punch out wooden components from their sheets.
2. **Folding and Shaping:** Fold paper components along designated lines to create 3D shapes.
3. **Gluing:** Apply glue sparingly and precisely to join parts. Allow sufficient drying time for each glued section before proceeding.
4. **Wiring (if applicable):** Follow specific instructions for connecting LED lights. Ensure correct polarity if batteries are involved.
5. **Detailing:** Add small accessories, paint details, and arrange furniture as per the design.



Illustrations showing specific assembly tasks, including painting small components, assembling miniature paper items like music sheets, and crafting miniature plants.

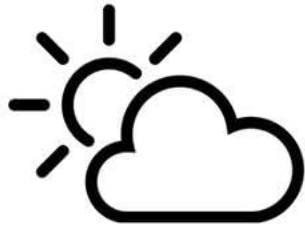


This image displays various miniature furniture items such as a piano, chairs, tables, and plants, which are part of the assembly kit.

OPERATING INSTRUCTIONS

Lighting System

The Simon's Coffee Miniature House features an integrated LED lighting system to enhance its ambiance. To activate the lights, locate the battery box (if included) or power connection point, typically at the back or base of the model. Insert the required batteries (not included, refer to specifications for type) or connect to a suitable power source. Use the switch to turn the lights on or off.



A visual comparison demonstrating the miniature house's appearance during daytime (without lights) and nighttime (with internal LED lighting activated).



A detailed shot of the miniature house, highlighting the warm glow of its internal lighting system, enhancing the realistic cafe ambiance.

MAINTENANCE

Cleaning

To maintain the appearance of your miniature house, gently dust it regularly using a soft brush or a can of compressed air. Avoid using wet cloths or harsh cleaning agents, as these can damage the delicate materials and paintwork.

Storage

When not on display, store the miniature house in a dry, cool place away from direct sunlight and extreme temperatures. Consider covering it with a clear dust cover to protect it from environmental elements.

TROUBLESHOOTING

Problem	Possible Cause	Solution
Parts do not fit together	Excess glue, misaligned parts, or slight manufacturing variations.	Gently sand edges if too tight. Ensure correct orientation before applying glue. Apply minimal glue.
Lights are not working	Incorrect battery insertion, dead batteries, loose wiring, or faulty LED.	Check battery polarity and replace batteries. Inspect wire connections. Ensure switch is in 'ON' position.
Missing or damaged pieces	Packaging error or damage during transit.	Contact the retailer or manufacturer with your proof of purchase and a description of the missing/damaged parts.

SPECIFICATIONS

Model Number: DG109

Brand: ROBOTIME

Assembled Dimensions (Approximate): 226mm (Width) x 194mm (Depth) x 190mm (Height)

Assembly Required: Yes

Batteries Required: No (for the kit itself, but may be needed for LED lights, type not specified in input, usually 2xAAA or button cells)

Educational Objectives: Spatial awareness

Recommended Age: 14 years and older (Note: The original product data states "14 months and more", which is likely a clerical error given the complexity and small parts of this type of DIY kit. Adult supervision is highly recommended for younger users.)



This image illustrates the overall dimensions of the assembled miniature house: 226mm width, 194mm depth, and 190mm height.

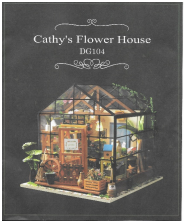

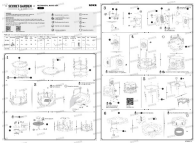
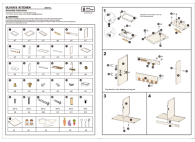
WARRANTY AND SUPPORT

For specific warranty information regarding your Robotime Simon's Coffee Miniature House 3D Puzzle, please refer to the documentation provided with your purchase or contact the retailer from whom you purchased the product. Warranty terms and conditions may vary by region and seller.

If you encounter any issues not covered in this manual or require further assistance, please reach out to the manufacturer's customer support or the seller's support channel. Keep your proof of purchase handy when contacting support.

For general inquiries about Robotime products, you may visit the official Robotime website: www.robotimeonline.com

Related Documents - DG109

	<p>Cathy's Flower House DG104: Miniature DIY Assembly Guide</p> <p>Comprehensive assembly instructions for the Cathy's Flower House DG104 miniature DIY craft kit by Robotime. This guide provides detailed steps, tips, and part lists to help you build your own charming flower house.</p>
	<p>Robotime EC Declaration of Conformity - Miniature House Kits</p> <p>Official EC Declaration of Conformity for Robotime Technology (Suzhou) Co., Ltd.'s range of DIY miniature house kits, including models like Mind-Find Bookstore, Holiday Party Time, and more, compliant with harmonized standards.</p>
	<p>ROKR AMK52 Secret Garden DIY Mechanical Music Box Assembly Instructions</p> <p>Comprehensive assembly instructions for the ROKR AMK52 Secret Garden DIY Mechanical Music Box by Robotime. This guide provides a detailed walkthrough of the assembly process, including a parts list, step-by-step instructions, and helpful tips for a successful build.</p>
	<p>Olivia's Kitchen Assembly Instructions - ROBOTIME WCF09</p> <p>Detailed assembly instructions for the ROBOTIME Olivia's Kitchen play set (Model WCF09). Includes parts list, step-by-step guidance, and safety warnings for building this wooden toy kitchen.</p>
	<p>Rolife TGB12 Alice's Wonderland Book Nook Assembly Instructions</p> <p>Step-by-step assembly guide for the Rolife TGB12 Alice's Wonderland Book Nook, featuring detailed instructions, tips for building, and a description of the final illuminated model. Includes information on other Rolife Book Nook series.</p>
	

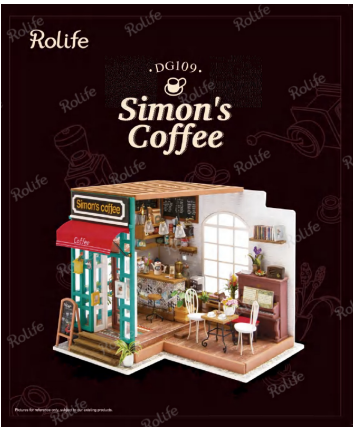


[Rolife Sea Holiday Restaurant DS039 Assembly Instructions](#)

Step-by-step assembly guide for the Rolife Sea Holiday Restaurant (DS039) miniature DIY house kit. Includes warnings, assembly tips, parts list, and tool information.



Documents - ROBOTIME – DG109



Brief Introduction

Tips of glue

1. The glue is used to glue small parts together. It is not used to glue large parts together. (See the tip 1.)

2. The glue is used to glue small parts together. It is not used to glue large parts together. (See the tip 1.)

3. The glue is used to glue small parts together. It is not used to glue large parts together. (See the tip 1.)

Tips of transparent sheet and fabric

1. Please cut them based on the size in the instruction.

Tips of light bead

1. Please cut them based on the size in the instruction.

Tips of assembling

1. Small parts are included. Please read the instructions carefully before assembling.

2. Please read the instructions carefully before assembling.

3. Please read the instructions carefully before assembling.

4. Please read the instructions carefully before assembling.

5. Please read the instructions carefully before assembling.

6. Please read the instructions carefully before assembling.

Tools included

1. Needle-nose pliers

2. Pliers

3. Scissors

4. Glue

5. Glue brush

6. Glue stick

7. Glue stick

8. Glue stick

9. Glue stick

10. Glue stick

Tools excluded

1. Needle-nose pliers

2. Pliers

3. Scissors

4. Glue

5. Glue brush

6. Glue stick

7. Glue stick

8. Glue stick

9. Glue stick

10. Glue stick

Paint on the part

1. Please paint the part with the paint.

2. Please paint the part with the paint.

3. Please paint the part with the paint.

4. Please paint the part with the paint.

5. Please paint the part with the paint.

6. Please paint the part with the paint.

Mark on the part

1. Please mark the part with the mark.

2. Please mark the part with the mark.

3. Please mark the part with the mark.

4. Please mark the part with the mark.

5. Please mark the part with the mark.

6. Please mark the part with the mark.

Part number explanation

1. Part number explanation

2. Part number explanation

3. Part number explanation

4. Part number explanation

5. Part number explanation

6. Part number explanation

Bar counter

Material List

1. Material List

2. Material List

3. Material List

4. Material List

5. Material List

6. Material List

Assembly

1. Assembly

2. Assembly

3. Assembly

4. Assembly

5. Assembly

6. Assembly

Bar stool

Material List

1. Material List

2. Material List

3. Material List

4. Material List

5. Material List

6. Material List

Assembly

1. Assembly

2. Assembly

3. Assembly

4. Assembly

5. Assembly

6. Assembly

Dining table

Material List

1. Material List

2. Material List

3. Material List

4. Material List

5. Material List

6. Material List

Assembly

1. Assembly

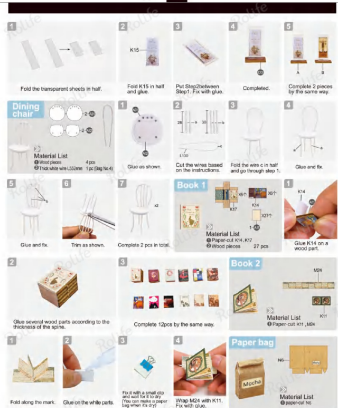
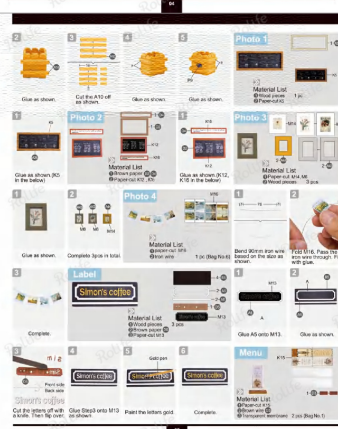
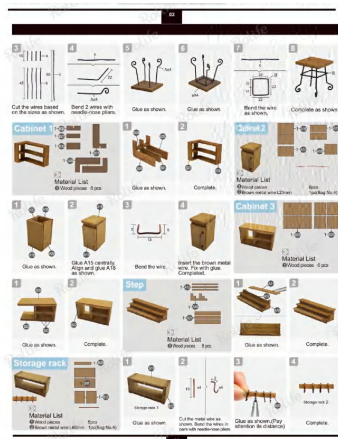
2. Assembly

3. Assembly

4. Assembly

5. Assembly

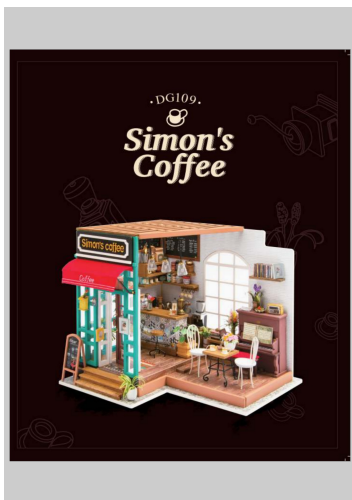
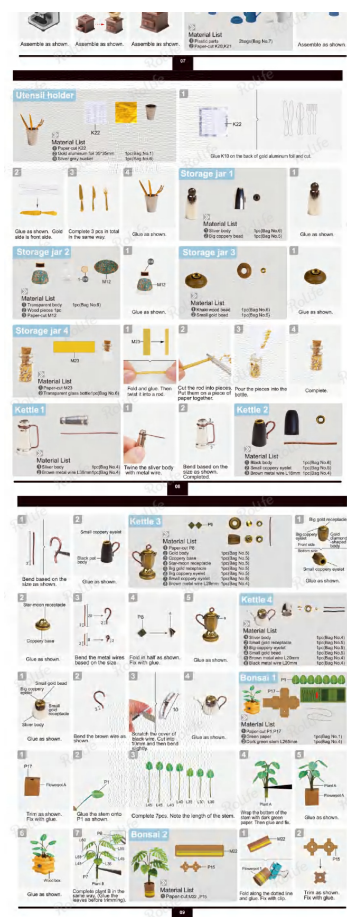
6. Assembly



[pdf]

dg109 cdn shopifyDG109 Rolife Simon s Coffee Assembly Instruction Tips Tricks Robotime
CommunityRolife DG109cdn shopify files 1 0660 2765 1230 DG109 v 1750045440 |||

lang: score:25 filesize: 1.09 M page_count: 2 document date: 2023-07-28



[\[pdf\]](#)

Untitled Bekijk de handleiding Robotime Simons Koffie DG109 Houten Modelbouw Miniatuur bouw pakket Poppenhuis met bol original media s R5V5RBynAZow |||

...

lang: **score:14** filesize: 1.99 M page_count: 24 document date: 2021-11-04

[\[pdf\]](#)

Untitled Bekijk de CE markering Robotime Simons Koffie DG109 Houten Modelbouw Miniatuur bouw pakket Poppenhuis met bol original media s gMg15EMBxgxl |||

...

lang: **score:14** filesize: 421.77 K page_count: 1 document date: 2022-07-04

