

KLEIN TOOLS AEPJS2

Klein Tools AEPJS2 Bluetooth Speaker Instruction Manual

Model: AEPJS2

1. SAFETY INFORMATION

Please read and understand all safety instructions before using this product. Failure to follow these instructions may result in electric shock, fire, or serious injury.

- There are no user-serviceable parts inside this device. Do not open the enclosure or attempt to repair this speaker.
- Never place this speaker on other electrical equipment.
- Never immerse the speaker in water or other liquids. Avoid spilling liquids or allowing foreign objects to fall into openings or vents on the speaker enclosure.
- Use only safety-rated power supplies or wall adapters for charging. Never use a power supply or wall adapter that exceeds the specified charging voltage and current.
- Keep the speaker away from extreme temperatures, direct sunlight, and heat sources.
- Do not dispose of the battery in fire.

2. PRODUCT OVERVIEW

The Klein Tools AEPJS2 is a rugged, portable Bluetooth speaker designed for various environments. It features high-quality audio, versatile mounting options, and a durable, water-resistant design.



Figure 2.1: Front view of the Klein Tools AEPJS2 Bluetooth Speaker.

Key Features:

- **High-Quality Sound:** Balanced audio with strong bass.
- **Extended Runtime:** Over 10 hours of playback at 70% volume from a rechargeable Li-Ion battery.
- **Bluetooth 4.2:** Provides a stable wireless connection up to 32.8 feet (10 meters).
- **Rugged Design:** IP54 dust and water-resistant enclosure with 6.6-foot (2 m) drop protection.
- **Versatile Mounting:** Integrated hole for hanging, flexible strap for securing around objects like conduit or bags, and embedded magnets for attachment to metal surfaces.
- **Hands-Free Speakerphone:** Built-in microphone for calls.

- **Auxiliary Input:** For wired audio connections.
- **USB-C Charging:** Modern and convenient charging port.

Components:



Figure 2.2: Labeled diagram of the Klein Tools AEPJS2 speaker components.

- **Auxiliary Jack:** For 3.5mm audio input.
- **USB-C Charging Port:** For charging the internal battery.
- **Controls:** Buttons for power, volume, and Bluetooth functions.
- **Built-in Microphone:** For hands-free calling.
- **LED Indicator:** Displays power, charging, and Bluetooth status.
- **Mounting Strap:** Flexible strap for securing the speaker.
- **Strong Magnet:** Embedded in the strap for magnetic attachment.

3. GETTING STARTED

3.1 Charging the Speaker

1. Locate the USB-C charging port on the side of the speaker, typically protected by a rubber flap.
2. Open the rubber flap.
3. Connect the included USB-C charging cable to the speaker's port.
4. Connect the other end of the USB-C cable to a compatible USB power source (e.g., wall adapter, computer USB port).
5. The LED indicator will show charging status (e.g., solid red for charging, off or green for fully charged).
6. A full charge takes approximately 10 hours.

3.2 Powering On/Off

- **To Power On:** Press and hold the Power button (⏻) for approximately 2 seconds. The LED indicator will illuminate.
- **To Power Off:** Press and hold the Power button (⏻) for approximately 2 seconds. The LED indicator will turn off.

3.3 Bluetooth Pairing

1. Ensure the speaker is powered on.
2. The speaker will automatically enter pairing mode if no device is connected, indicated by a flashing blue LED. If a device is already connected, disconnect it or press and hold the Bluetooth button to enter pairing mode.
3. On your mobile device (smartphone, tablet), enable Bluetooth and search for available devices.
4. Select "AEPJS2" from the list of found devices.
5. Once paired, the LED indicator will turn solid blue.

3.4 Auxiliary Connection

1. Locate the auxiliary jack next to the USB-C charging port.
2. Connect one end of the included 3.5mm auxiliary cable to the speaker's auxiliary jack.
3. Connect the other end of the auxiliary cable to the headphone jack or audio output of your device.
4. The speaker will automatically switch to auxiliary input mode.

4. OPERATION

4.1 Audio Playback

- **Volume Up:** Press the '+' button.
- **Volume Down:** Press the '-' button.
- **Play/Pause:** Press the Play/Pause button (often integrated with the Bluetooth button).
- Control track selection (next/previous) directly from your connected device.

4.2 Call Management (Hands-Free Speakerphone)

- When a call is received, the speaker will ring.
- **Answer Call:** Press the Play/Pause button once.
- **End Call:** Press the Play/Pause button once during a call.
- **Reject Call:** Press and hold the Play/Pause button for 2 seconds.

4.3 Mounting Options

The AEPJS2 speaker offers multiple ways to secure it in various work environments:



Figure 4.1: Magnetic attachment to a metal stud.

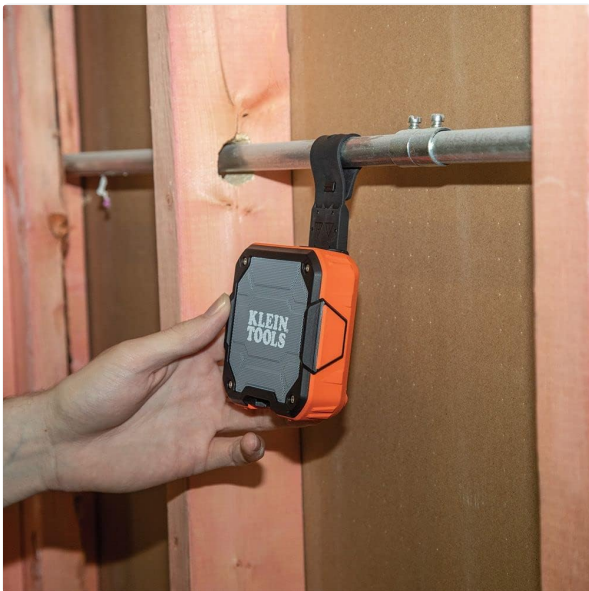


Figure 4.2: Hanging from a metal conduit using the strap.



Figure 4.3: Hanging from industrial equipment.



Figure 4.4: Attached to a belt for portability.

- **Magnetic Mount:** The strap contains strong magnets allowing the speaker to be attached to any ferrous metal surface.
- **Strap Mount:** Use the flexible strap to secure the speaker around pipes, conduit, handles, or backpack straps.
- **Integrated Hole:** A small hole is provided for hanging the speaker with a hook or carabiner (not included).

5. MAINTENANCE

5.1 Cleaning

- Ensure the speaker is powered off and disconnected from any power source before cleaning.
- Wipe the exterior of the speaker with a soft, damp cloth.
- Do not use abrasive cleaners, solvents, or harsh chemicals.
- Ensure the rubber flap covering the ports is securely closed after cleaning to maintain water resistance.

5.2 Battery Care and Storage

- For optimal battery life, avoid fully discharging the speaker frequently.
- If storing the speaker for an extended period, charge it to approximately 50% capacity and store it in a cool, dry place. Recharge every 3-6 months to prevent deep discharge.
- Do not expose the battery to extreme heat or cold.

6. TROUBLESHOOTING

If you encounter issues with your Klein Tools AEPJS2 speaker, refer to the following common problems and solutions:

Problem	Possible Cause	Solution
Speaker does not power on.	Low or depleted battery.	Charge the speaker using the provided USB-C cable and a compatible power source.
No sound from speaker.	Volume too low; Device not connected; Incorrect input mode.	Increase speaker and device volume; Ensure Bluetooth is paired or Aux cable is connected; Verify correct input mode.

Problem	Possible Cause	Solution
Bluetooth pairing fails.	Speaker not in pairing mode; Device too far; Interference.	Ensure speaker LED is flashing blue; Move device closer to speaker; Turn off other Bluetooth devices.
Poor sound quality.	Low battery; Device too far; Interference; Damaged audio file.	Charge speaker; Move device closer; Reduce interference; Try a different audio source.
Speaker not charging.	Faulty cable or power source; Port obstruction.	Try a different USB-C cable or power adapter; Check charging port for debris.

If the problem persists after attempting these solutions, please contact Klein Tools customer support. Do not attempt to open or repair the speaker yourself.

7. SPECIFICATIONS



Figure 7.1: Klein Tools AEPJS2 Speaker Dimensions.

Feature	Detail
Model Number	AEPJS2
Speaker Type	Bluetooth Wireless Speaker
Connectivity	Bluetooth 4.2, Auxiliary (3.5mm)
Bluetooth Range	32.8 Feet (10 Meters)
Power Source	Battery Powered (Rechargeable Li-Ion)

Feature	Detail
Battery Runtime	Over 10 hours (at 70% volume)
Charging Port	USB-C
Charging Time	Approximately 10 hours
Water Resistance	IP54 (Dust and Water Resistant)
Drop Protection	6.6-Foot (2 m)
Mounting Options	Magnetic Mount, Strap Mount
Special Features	Hands-Free Speakerphone, Built-in Microphone
Product Dimensions	2.13"D x 3.88"W x 3.5"H
Item Weight	9.5 Ounces
Included Components	Aux Cable, USB-C Charging Cable, Instruction Manual
Material	Polycarbonate/Thermoplastic Polyurethane & Plastic
Manufacturer	Klein Tools

8. WARRANTY AND SUPPORT

8.1 Warranty Information

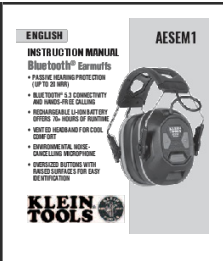
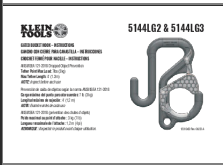
This Klein Tools AEPJS2 Bluetooth Speaker comes with a Full Warranty. For specific details regarding warranty coverage, duration, and terms, please refer to the warranty documentation included with your purchase or visit the official Klein Tools website.

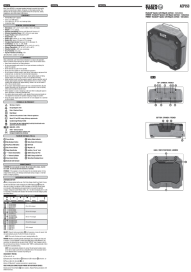
8.2 Customer Support

For technical assistance, troubleshooting beyond this manual, or warranty claims, please contact Klein Tools customer support. You can typically find contact information on the official Klein Tools website or on the product packaging.

Online Support: Visit the official Klein Tools website for FAQs, product registration, and support resources.

Related Documents - AEPJS2

	<p>Klein Tools AESEM1 Bluetooth Earmuffs: User Manual and Features</p> <p>Discover the Klein Tools AESEM1 Bluetooth Earmuffs. This manual provides detailed information on features, operation, safety, and specifications for these noise-reducing, Bluetooth-enabled earmuffs designed for comfort and protection.</p>
	<p>Klein Tools 5144LG2 & 5144LG3 Gated Bucket Hook Instructions</p> <p>Instructions for Klein Tools 5144LG2 and 5144LG3 Gated Bucket Hooks, detailing features, load limits, and compliance with ANSI/ISEA 121-2018 for dropped object prevention.</p>



[Klein Tools AEPJS3 Bluetooth Speaker with Magnet and Hook - User Manual](#)

Comprehensive user manual for the Klein Tools AEPJS3 Bluetooth Speaker, detailing specifications, operation, maintenance, charging, and compliance information. Features magnetic mounting and water resistance.



[Klein Tools PJSFM2 Rechargeable Jobsite Fan - Portable, Durable, and Powerful](#)

Discover the Klein Tools PJSFM2 Rechargeable Jobsite Fan. This portable fan offers powerful airflow, long battery life, and durable construction for demanding work environments. Features include multiple mounting options, USB-C charging, and IP54 ingress protection.



[Klein Tools 56048 Rechargeable LED Headlamp - User Manual](#)

Detailed instructions and specifications for the Klein Tools 56048 Rechargeable LED Headlamp, including operating procedures, charging, maintenance, and safety warnings.



[Klein Tools MM450 Auto-Ranging TRMS Digital Multimeter Instruction Manual](#)

Explore the Klein Tools MM450 Auto-Ranging TRMS Digital Multimeter with this comprehensive instruction manual. Learn about its features for measuring AC/DC voltage, current, resistance, capacitance, frequency, temperature, and more. Includes detailed specifications and safety guidelines.