

MikroTik RB760iGS

MikroTik hEX S RB760iGS Router Instruction Manual

Model: RB760iGS | Brand: MikroTik

1. INTRODUCTION

The MikroTik hEX S (RB760iGS) is a compact and powerful five-port Gigabit Ethernet router designed for environments where wireless connectivity is not a primary requirement. It features an SFP port for fiber connectivity and Power over Ethernet (PoE) output on its last port, making it versatile for various network setups. Equipped with a dual-core 880 MHz CPU and 256 MB RAM, the hEX S supports advanced configurations through RouterOS, including IPsec hardware encryption and The Dude server package.

2. KEY FEATURES

- **Five Gigabit Ethernet Ports:** Provides high-speed wired connectivity for multiple devices.
- **SFP Port:** Enables fiber optic connections for extended range or higher bandwidth.
- **PoE Output:** Ethernet port #5 supports Power over Ethernet output, allowing it to power other PoE-compatible devices.
- **Powerful CPU & RAM:** Features a dual-core 880 MHz CPU and 256 MB RAM for robust performance and advanced RouterOS configurations.
- **USB 2.0 Port:** For connecting external storage or other USB devices.
- **MicroSD Slot:** Enhances read/write speed for file storage and supports The Dude server package.
- **IPsec Hardware Encryption:** Offers secure data transmission with speeds up to approximately 470 Mbps.
- **RouterOS Level 4 License:** Provides extensive routing, firewall, and network management capabilities.

3. PACKAGE CONTENTS

The MikroTik hEX S (RB760iGS) package typically includes the following items:

- MikroTik hEX S (RB760iGS) Router Unit
- 24V 1.2A Power Adapter
- Quick Guide / User Manual

Your browser does not support the video tag.

Video Description: This video provides an unboxing and overview of the MikroTik hEX S router, showcasing its physical features and included accessories. It highlights the compact design and various ports.

4. HARDWARE OVERVIEW

Familiarize yourself with the ports, indicators, and buttons on your hEX S router.

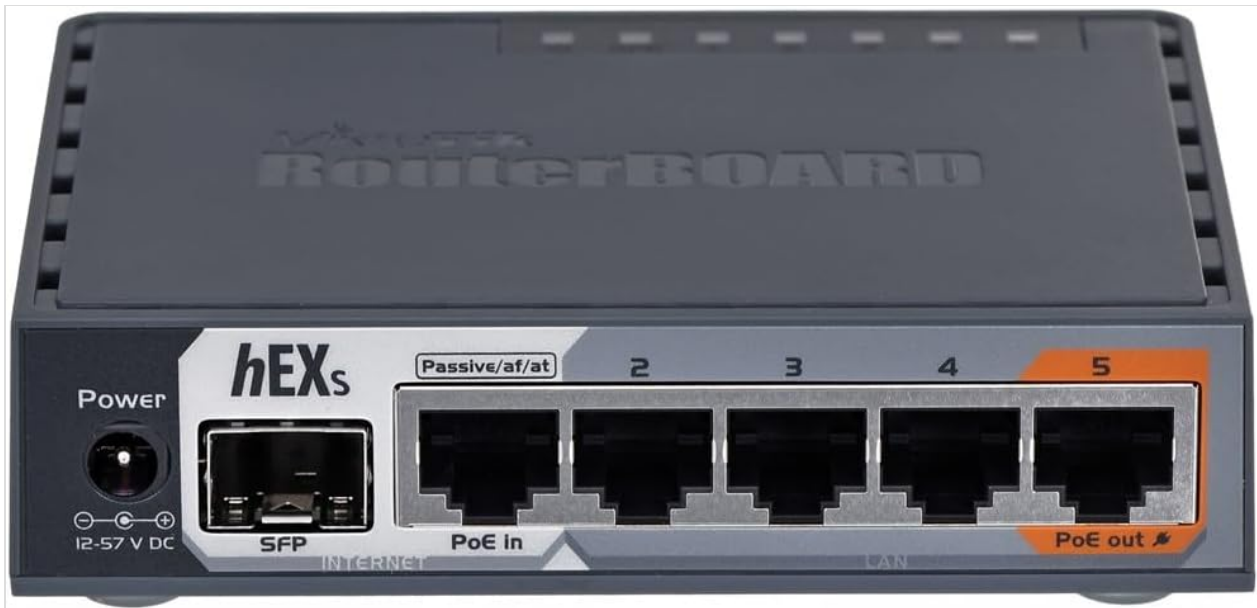


Image Description: Front view of the MikroTik hEX S (RB760iGS) router. It displays the power input jack, an SFP port, and five Gigabit Ethernet ports labeled 1 through 5. Port 5 is also marked for PoE output. Status LEDs are visible above the ports.



Image Description: An angled view of the MikroTik hEX S (RB760iGS) router, highlighting the front panel with its ports and

the right side panel. The right side features a USB 2.0 port, a reset button, and a microSD card slot.

4.1. Ports and Connectors

- **DC Power Jack (12-57V):** For connecting the power adapter.
- **SFP Port:** For connecting fiber optic modules.
- **Ethernet Ports (1-5):** Five 10/100/1000 Gigabit Ethernet ports. Port 1 supports Passive PoE-in, and Port 5 supports PoE-out.
- **USB 2.0 Port:** For connecting external devices like modems or storage.
- **MicroSD Card Slot:** For additional storage or RouterOS features.

4.2. Buttons and Indicators

- **Reset Button:** Used to reset the device to factory defaults or enter RouterBOOT mode.
- **Mode Button:** User-configurable button for various functions.
- **LED Indicators:** Lights indicating power, user activity, and Ethernet port status.

5. SETUP

Follow these steps to set up your MikroTik hEX S router:

1. **Connect Power:** Connect the provided 24V 1.2A power adapter to the DC power jack on the router.
2. **Connect to Internet:** Connect your internet source (e.g., modem) to the Ethernet port labeled 'Internet' or 'PoE In' (Port 1).
3. **Connect Devices:** Connect your computer or other network devices to any of the remaining Ethernet ports (LAN ports 2-5).
4. **Initial Access:** Open a web browser on a connected computer and navigate to the default IP address (usually 192.168.88.1). Log in using the default username (admin) and an empty password.
5. **Configuration:** Follow the on-screen Quick Set interface to configure your basic network settings, including WAN, LAN, and any desired advanced features.

For detailed configuration, refer to the RouterOS documentation available on the MikroTik website.

6. OPERATING THE ROUTER

The MikroTik hEX S runs on RouterOS, a highly versatile and powerful operating system for MikroTik hardware. It offers extensive features for network management, routing, firewall, VPN, and more.

6.1. RouterOS Interface

You can manage your router using:

- **WebFig:** A web-based graphical user interface (GUI) accessible via your browser.
- **WinBox:** A dedicated Windows application for managing MikroTik devices.
- **CLI (Command Line Interface):** Accessible via Telnet, SSH, or serial console for advanced users.

6.2. Basic Operations

- **Internet Connectivity:** Ensure the WAN port is connected to your internet source and configured correctly.

- **Local Network:** Devices connected to LAN ports will receive IP addresses from the router's DHCP server by default.
- **PoE Out:** To power a device via PoE on Port 5, ensure the device is PoE-compatible and the PoE output is enabled in RouterOS.
- **SFP Usage:** Insert a compatible SFP module into the SFP port and configure it within RouterOS for fiber connectivity.

7. MAINTENANCE

Regular maintenance ensures optimal performance and longevity of your router.

- **Firmware Updates:** Regularly check for and install the latest RouterOS firmware updates from the MikroTik website to benefit from new features, bug fixes, and security enhancements.
- **Backup Configuration:** Periodically back up your router's configuration to prevent data loss in case of unexpected issues.
- **Physical Cleaning:** Keep the device clean and free from dust to ensure proper airflow and prevent overheating. Use a soft, dry cloth.
- **Environmental Conditions:** Ensure the router is operated within its specified temperature and humidity ranges.

8. TROUBLESHOOTING

If you encounter issues with your hEX S router, consider the following common troubleshooting steps:

- **No Power:** Verify the power adapter is securely connected to both the router and a working power outlet. Check the power LED indicator.
- **No Internet Access:** Check the WAN connection and ensure your internet service provider's equipment is functioning. Verify WAN port configuration in RouterOS.
- **Device Not Accessible:** Ensure your computer is connected to a LAN port and has a valid IP address. Try accessing the router via WinBox or reset the device to factory defaults (refer to the Quick Guide for reset instructions).
- **Slow Performance:** Check for high CPU usage in RouterOS, potential network loops, or excessive traffic. Consider optimizing firewall rules or upgrading firmware.
- **PoE Output Issues:** Confirm that the connected device is PoE-compatible and that PoE output is enabled and configured correctly on Port 5 in RouterOS.

For more advanced issues, consult the MikroTik documentation or seek assistance from MikroTik support forums.

9. SPECIFICATIONS

Feature	Detail
Product Dimensions	1.1 x 9.7 x 6.5 inches
Item Weight	3.53 ounces
Item Model Number	RB760iGS

Feature	Detail
CPU	Dual Core 880MHz
RAM	256MB
Ethernet Ports	5x Gigabit Ethernet (Port 1 PoE-in, Port 5 PoE-out)
SFP Port	1x 1.25Gbit/s SFP cage
USB Port	1x USB 2.0
MicroSD Slot	Yes
Operating System	RouterOS L4
IPsec Hardware Encryption	Supported (~470 Mbps)
Manufacturer	Mikrotik
Color	Black

10. WARRANTY AND SUPPORT

For warranty information, please refer to the documentation provided with your product or visit the official MikroTik website. Technical support and additional resources, including detailed RouterOS manuals and community forums, are available on the MikroTik website.