

## ARIEL ARL-PW1685959CW1-P

# ARIEL ARL-PW1685959CW1-P 61-inch Trapezoid Whirlpool Bathtub User Manual

Model: ARL-PW1685959CW1-P

## 1. INTRODUCTION

This manual provides detailed instructions for the installation, operation, and maintenance of your ARIEL 61-inch Trapezoid Whirlpool Bathtub. Please read this manual thoroughly before installation and use to ensure safe and efficient operation. Retain this manual for future reference.

The ARIEL Trapezoid Whirlpool Bathtub is designed to provide a luxurious bathing experience with its advanced hydro-massage system, featuring 14 multi-directional jets, air bubble jets, and a waterfall faucet, all controlled by an intuitive pneumatic system.

## 2. SAFETY INFORMATION

**WARNING: To reduce the risk of injury, do not permit children to use this product unless they are closely supervised at all times.**

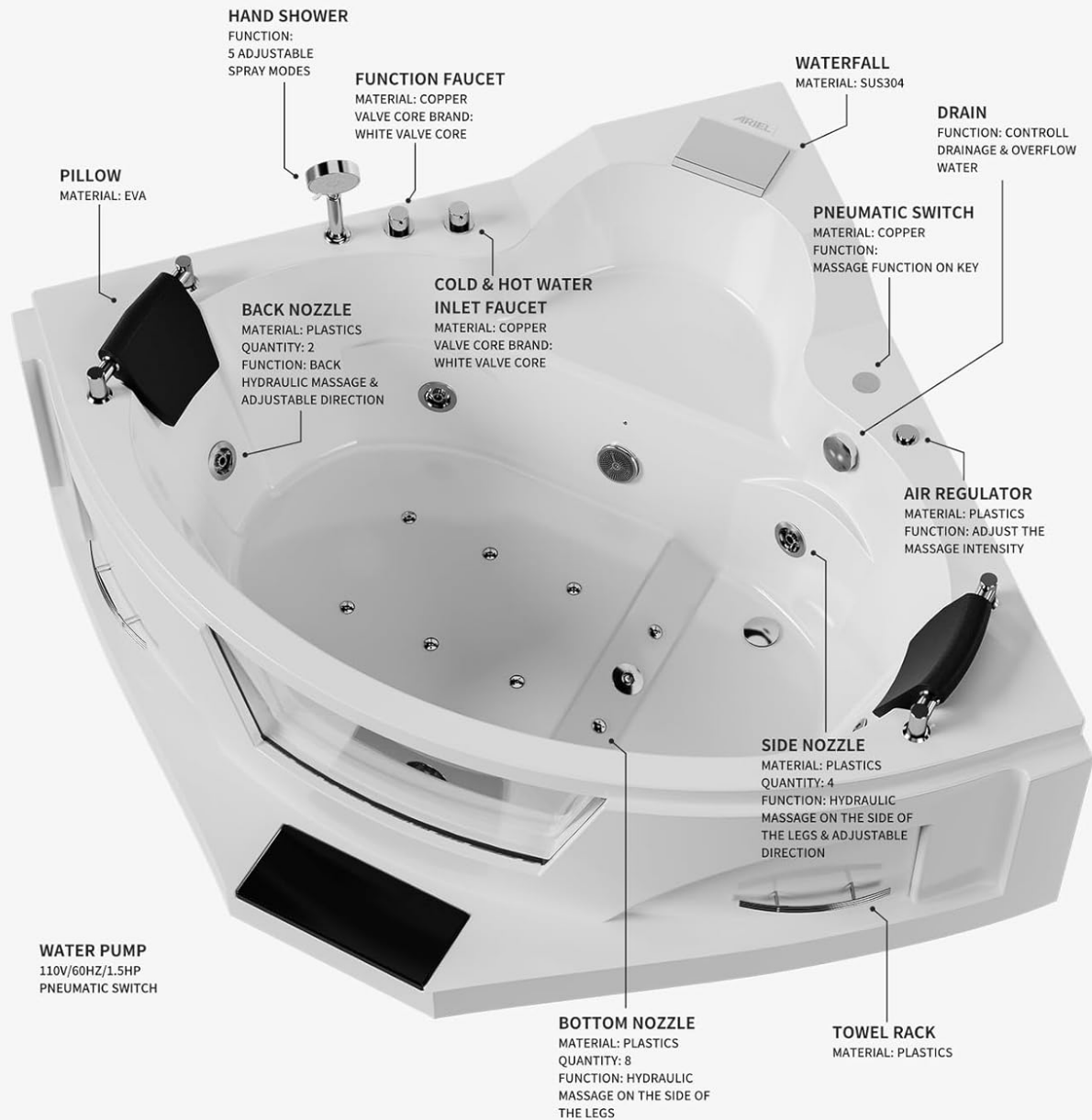
**WARNING: Do not operate this product without the suction cover properly installed to prevent hair or body entrapment.**

**WARNING: Persons with medical conditions such as heart disease, high blood pressure, diabetes, or those who are pregnant should consult a physician before using this product.**

- Always ensure the bathtub is properly grounded according to local electrical codes.
- Do not use electrical appliances near the bathtub.
- Maintain water temperature below 104°F (40°C) to avoid hyperthermia.
- Avoid using abrasive cleaners or sharp objects that could damage the acrylic surface.
- Ensure proper ventilation in the bathroom to prevent moisture buildup.
- Do not block the air intake or water circulation openings.

## 3. PRODUCT OVERVIEW AND COMPONENTS

The ARIEL Trapezoid Whirlpool Bathtub is equipped with various features for a complete hydro-massage experience. Familiarize yourself with the components before installation and operation.



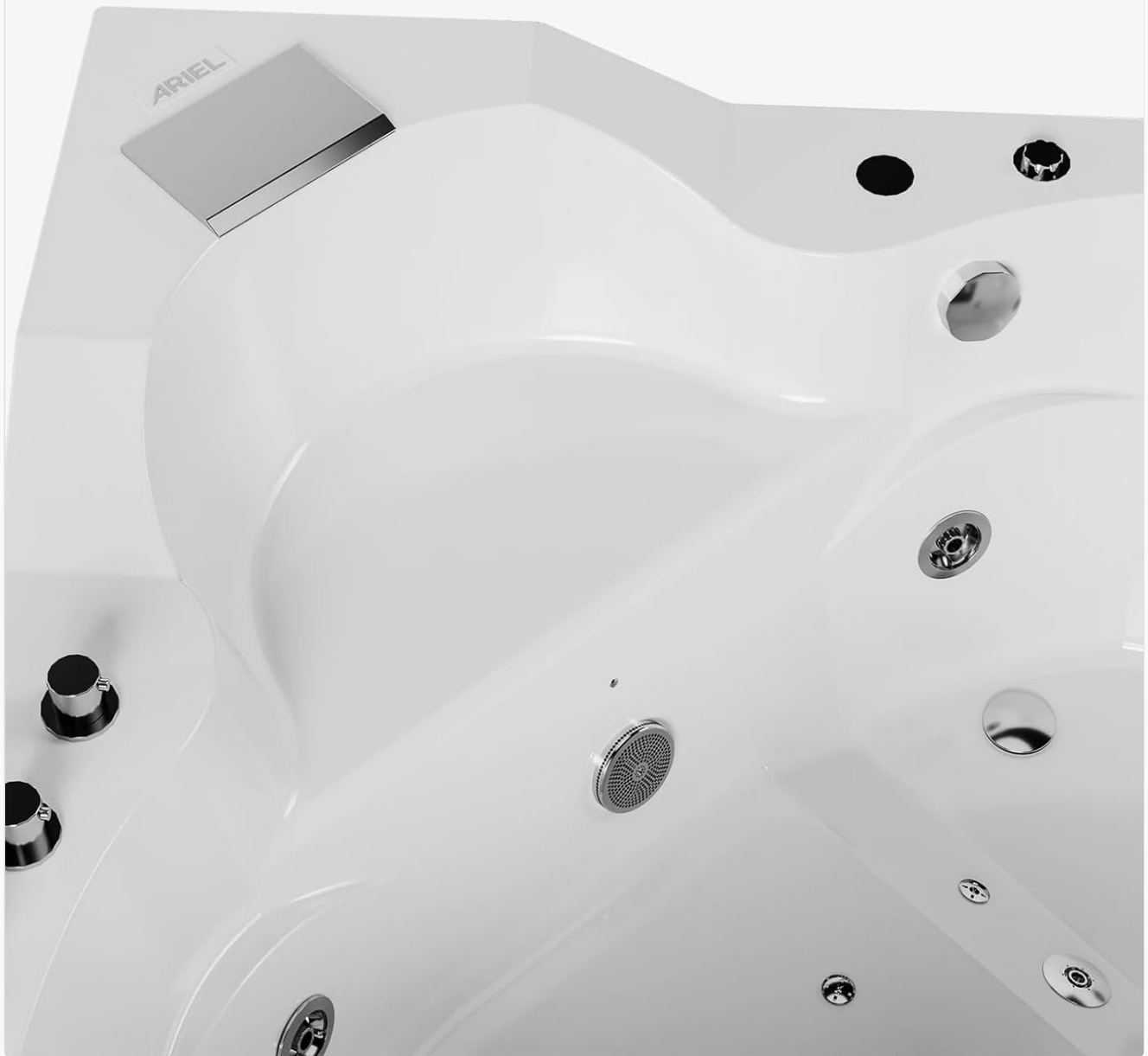
**Figure 3.1: Bathtub Component Diagram.** This diagram illustrates the various parts of the ARIEL Trapezoid Whirlpool Bathtub, including jets, controls, and fixtures.

- **Hydro Jets:** 14 multi-directional jets for targeted massage.
- **Air Bubble Jets:** Provide a gentle, effervescent massage.
- **Pneumatic Controls:** Simple push-button system for operating jets and water flow.
- **Waterfall Faucet:** Delivers water for rapid filling and aesthetic appeal.
- **Hand Shower:** For focused rinsing and convenience.
- **Anti-Scald Faucet Valve:** Maintains consistent water temperature for safety.
- **Dual Head Cushions:** Removable for ergonomic comfort.

- **Tempered Glass Panel:** 5mm thick, integrated into the front design.



**Figure 3.2: Hand Shower and Controls.** A detailed view of the chrome hand shower and the intuitive pneumatic push-button controls.



**Figure 3.3: Waterfall Faucet.** The integrated waterfall faucet provides a continuous flow of water for filling the tub.

## 4. INSTALLATION INSTRUCTIONS

This bathtub is designed for floor-mounted installation. Professional installation by a licensed plumber and electrician is highly recommended to ensure compliance with local codes and safety standards.

### 4.1 Pre-Installation Checklist

- Verify all components are present and undamaged.
- Ensure the installation area is level and structurally sound to support the weight of the filled tub and occupants (approximately 190 lbs dry weight + 92 gallons water \* 8.34 lbs/gallon = ~767 lbs water + occupants).
- Confirm access to hot and cold water supply lines.
- Ensure a properly grounded electrical outlet (110V/60Hz/15A) is available for the water pump.

- Provide adequate drainage according to local plumbing codes.
- Plan for an access panel to the tub's internal components for future maintenance.

## **4.2 Plumbing Connections**

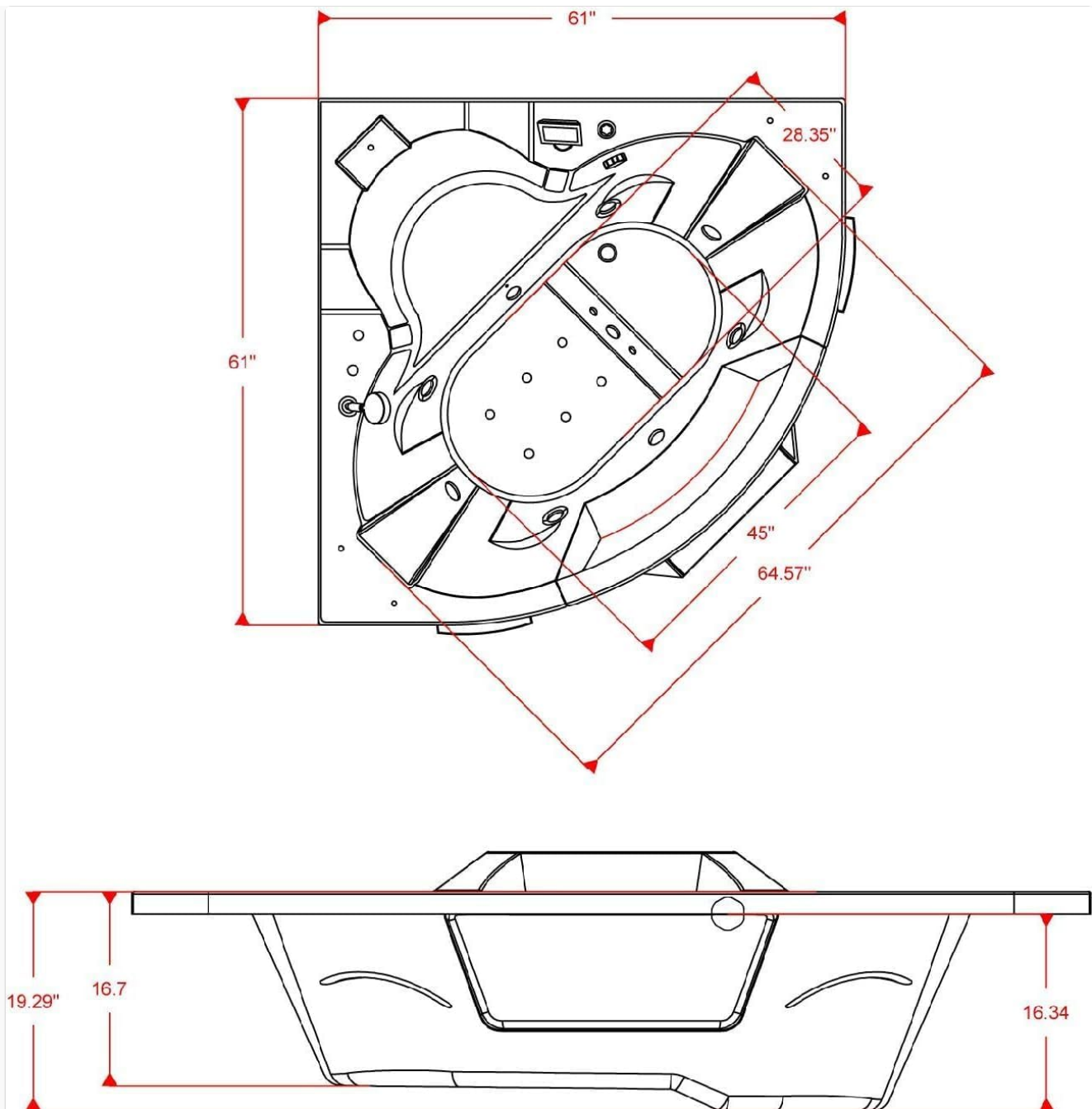
1. Connect the hot and cold water supply lines to the inlet faucets. Ensure all connections are watertight.
2. Connect the flexible drain hose to the main drain line. Verify a secure and leak-free connection.
3. Test all plumbing connections for leaks before proceeding.

## **4.3 Electrical Connections**

1. Connect the water pump's power cord to a dedicated, grounded 110V/60Hz/15A GFCI-protected electrical outlet.
2. Ensure all electrical connections are made by a qualified electrician and comply with local electrical codes.

## **4.4 Final Placement**

1. Carefully position the bathtub in its final location.
2. Ensure the tub is level and stable. Adjust leveling feet if necessary.
3. Install any decorative panels or trim, ensuring access to plumbing and electrical components remains possible.



**Figure 4.1: Bathtub Dimensions.** This technical drawing provides precise measurements for planning your installation space.

## 5. OPERATING INSTRUCTIONS

Your ARIEL whirlpool bathtub features user-friendly pneumatic controls for a relaxing experience.

### 5.1 Filling the Bathtub

1. Ensure the drain is closed.
2. Turn on the hot and cold water supply to achieve your desired temperature. The anti-scald faucet valve will help maintain a consistent temperature.
3. The waterfall faucet delivers water at up to 3.7 gallons per minute. Fill the tub to a level that covers the jets, but do not overfill.

### 5.2 Activating Hydro-Massage Functions

- **Hydro Jets:** Press the pneumatic button labeled for "Jets" to activate the 14 multi-directional hydro jets. Press again to turn off.

- **Air Bubble Jets:** Press the pneumatic button labeled for "Air Bubbles" to activate the air bubble massage. Press again to turn off.
- **Adjusting Jet Intensity:** Some jets may have adjustable nozzles. Rotate the outer ring of the jet to change the direction of the water flow.
- **Hand Shower:** To use the hand shower, pull the diverter knob located near the main faucet. The hand shower offers multiple spray modes.

**Note:** Do not operate the hydro jets or air bubble jets if the water level is below the jet openings, as this can damage the pump.

## 6. MAINTENANCE

Regular maintenance will ensure the longevity and optimal performance of your ARIEL whirlpool bathtub.

### 6.1 Cleaning the Bathtub Surface

- Clean the acrylic surface with a soft cloth and a non-abrasive, mild bathroom cleaner.
- Avoid cleaners containing ammonia, acetone, or harsh chemicals, as these can damage the acrylic finish.
- Rinse thoroughly with clean water after cleaning.

### 6.2 Cleaning the Jet System

1. Fill the tub with warm water to a level above the highest jets.
2. Add 2-3 tablespoons of a low-foaming dishwasher detergent or a specialized jet cleaner.
3. Run the hydro jets for 10-15 minutes.
4. Drain the tub, then refill with clean water and run the jets for another 5 minutes to rinse.
5. Repeat this process monthly or as needed, especially after heavy use.

### 6.3 Drain Maintenance

- Regularly remove hair and debris from the drain cover to prevent clogs.
- If a clog occurs, use a plumbing snake or a chemical drain cleaner specifically designed for bathtubs, following product instructions carefully.

## 7. TROUBLESHOOTING

This section addresses common issues you might encounter with your whirlpool bathtub.

Problem	Possible Cause	Solution
Jets do not activate.	No power to the pump. Water level too low. Pneumatic button malfunction.	Check GFCI outlet and circuit breaker. Ensure water level is above all jets. Contact customer support if button is unresponsive.
Water leaks from connections.	Loose plumbing connections. Damaged seals.	Tighten all accessible plumbing connections. Inspect seals and replace if damaged. Professional assistance may be required.

Problem	Possible Cause	Solution
Weak jet pressure.	Clogged jets or pump intake. Low water level.	Clean the jet system as described in Section 6.2. Ensure water level is adequate.
Water temperature is inconsistent.	Anti-scald valve issue. Water heater settings.	Check your home's water heater settings. If the issue persists, consult a professional plumber for anti-scald valve inspection.

## 8. SPECIFICATIONS







Feature	Detail
Model Number	ARL-PW1685959CW1-P
Brand	ARIEL
Dimensions (L x W x H)	61" x 61" x 28.74"
Material	Acrylic reinforced with Fiberglass
Color	White
Capacity	92 Gallons
Number of Jets	14 Hydro Jets and Air Bubble Jets
Controls	Pneumatic Push-Button
Faucet Type	Waterfall with Anti-Scald Valve, Hand Shower
Fixtures Finish	Chrome
Installation Type	Floor-Mounted
Item Weight	190 pounds
UPC	843012115566

## 9. WARRANTY AND SUPPORT

For warranty information and customer support, please refer to the documentation provided at the time of purchase or visit the official ARIEL website. Keep your purchase receipt as proof of purchase for any warranty claims. If you require technical assistance or have questions regarding your ARIEL whirlpool bathtub, please contact ARIEL customer service.

**Online Resources:** [Visit the ARIEL Store on Amazon](#)

## Related Documents - ARL-PW1685959CW1-P

	<p><a href="#">ARIEL ARL-702 Whirlpool Bathtub Installation and User Manual</a></p> <p>Comprehensive installation and user manual for the ARIEL ARL-702 Whirlpool Bathtub, covering safety, operation, maintenance, and technical specifications.</p>
	<p><a href="#">ARIEL AM128JDCLZ Bathtub Installation Manual and Warranty Information</a></p> <p>Comprehensive installation manual and warranty details for the ARIEL AM128JDCLZ Bathtub. Includes specifications, safety instructions, assembly steps, operation guides, and warranty coverage.</p>
	<p><a href="#">ARIEL ARL-701 Whirlpool Bathtub Installation and User Manual</a></p> <p>Comprehensive installation and user manual for the ARIEL ARL-701 Whirlpool Bathtub, covering safety precautions, installation steps, operating instructions, and maintenance guidelines.</p>
	<p><a href="#">Ariel PW1565959CW1 Whirlpool Installation Manual</a></p> <p>This document provides installation instructions for the Ariel PW1565959CW1 Whirlpool Bathtub, including technical parameters, parts identification, and assembly steps.</p>
	<p><a href="#">ARIEL Whirlpool Bathtub Installation Manual - PW1547032LW1, PW1547032RW1</a></p> <p>Comprehensive installation guide for ARIEL Platinum Whirlpool Bathtubs, models PW1547032LW1 and PW1547032RW1. Details component identification, precise dimensions, technical specifications, and step-by-step installation instructions for a safe and proper setup.</p>
	<p><a href="#">ARIEL AM128 Whirlpool Installation Manual - Guide and Specifications</a></p> <p>Comprehensive installation manual for the ARIEL AM128 whirlpool bathtub. Includes parts list, dimensions, technical specifications, and step-by-step installation instructions.</p>