



Manuals.plus /

› **Outsunny** /

› Outsunny 10' x 8' Retractable Awning Instruction Manual

Outsunny 840-150V01CF

Outsunny 10' x 8' Retractable Awning

Model: 840-150V01CF

Brand: Outsunny

INTRODUCTION

Thank you for choosing the Outsunny 10' x 8' Retractable Awning. This manual provides essential information for the safe and efficient installation, operation, and maintenance of your new awning. Please read these instructions thoroughly before assembly and use to ensure proper function and longevity of the product.



The Outsunny 10' x 8' Retractable Awning provides shade and protection for your outdoor living space.

SAFETY INFORMATION

Important Safety Precautions:

- Ensure the awning is installed on a sturdy surface capable of holding **42 lbs. or more**. Improper installation can lead to product failure and injury.
- This awning is designed for **sun protection and light rain**. Do not use the awning during heavy rain, strong winds, snow, or other severe weather conditions. Large amounts of rain can pool on the fabric and cause damage to the awning structure.
- Regularly inspect all mounting hardware and structural components for tightness and wear. Tighten any loose fasteners immediately.
- Keep children and pets away from the awning during operation to prevent accidents.
- Do not hang objects from the awning frame or fabric.

PACKAGE CONTENTS

Before beginning assembly, ensure all parts are present and undamaged. Refer to the parts list in your included assembly guide. Key components typically include:

- Awning Fabric Roll
- Aluminum Frame and Arms
- Manual Crank Handle
- Mounting Brackets and Hardware (for concrete surfaces; wood-framed home screws included)
- Front Support Bar

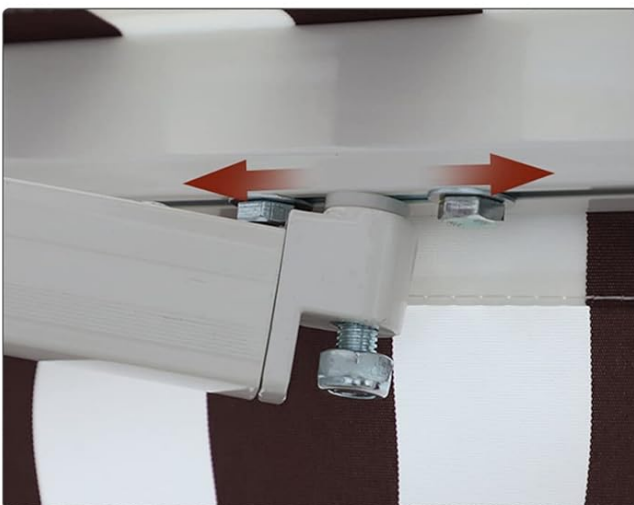
PRODUCT DETAILS



Solid aluminum supporting bracket



Retractable arms



Smooth sliding front support bar



Decorative edging

Detailed view of key product components including the supporting bracket, retractable arms, and front bar.

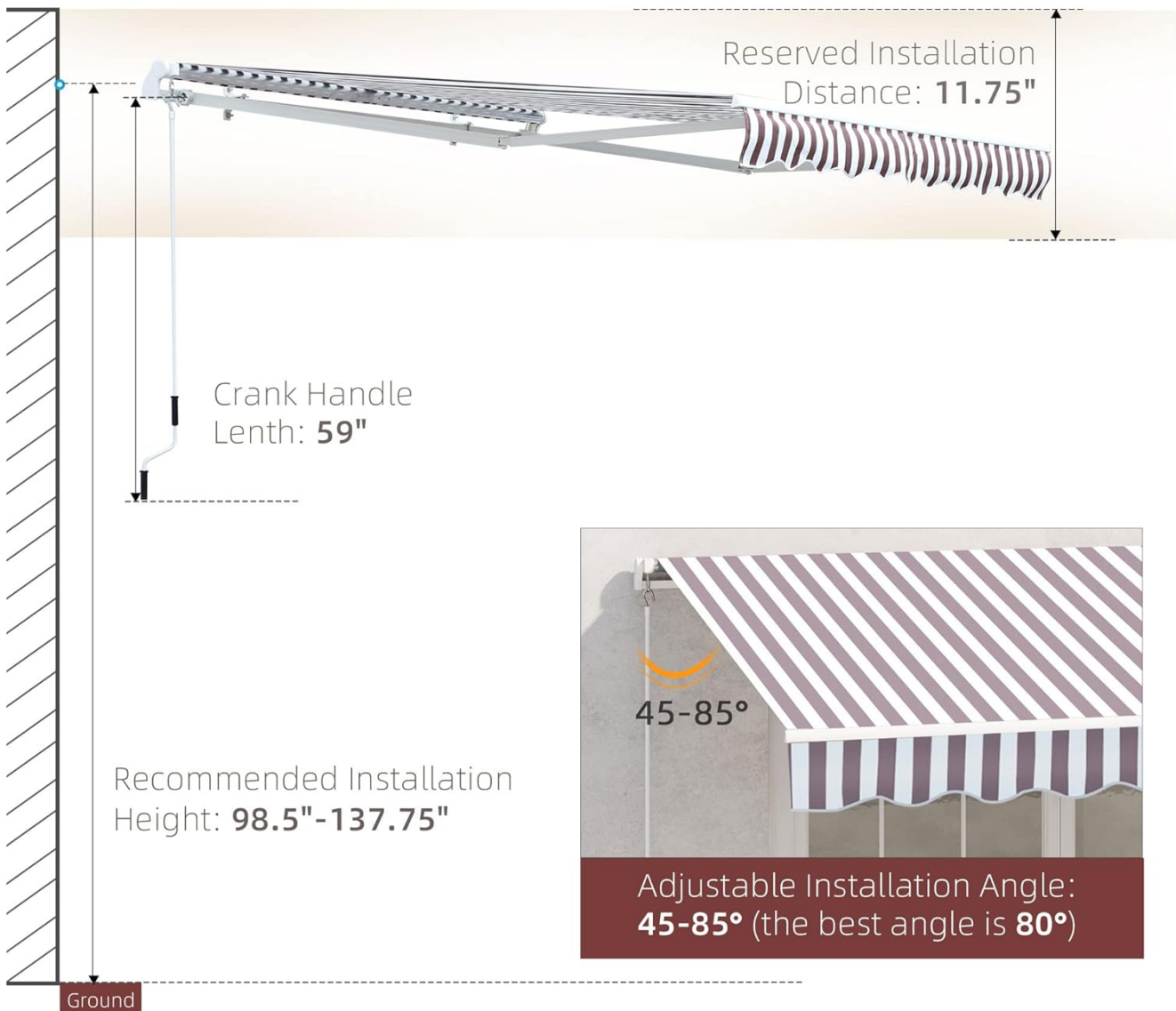
SETUP AND INSTALLATION

The Outsunny Retractable Awning can be attached to various surfaces including concrete, brick, wood, or stucco. All necessary hardware for concrete surfaces is included. Mounting screws for wood-framed homes are also provided.

Installation Recommendations:

- **Surface Strength:** The mounting surface must be able to support a minimum of 42 lbs.
- **Recommended Height:** Install the awning between 98.5 inches and 137.75 inches (approximately 8.2 to 11.5 feet) above the ground.
- **Installation Angle:** The adjustable installation angle ranges from 45 to 85 degrees. An angle of 80 degrees is generally considered ideal for optimal shade and water runoff.
- **Reserved Installation Distance:** Maintain a reserved installation distance of 11.75 inches from the top of the awning to any overhead obstruction.

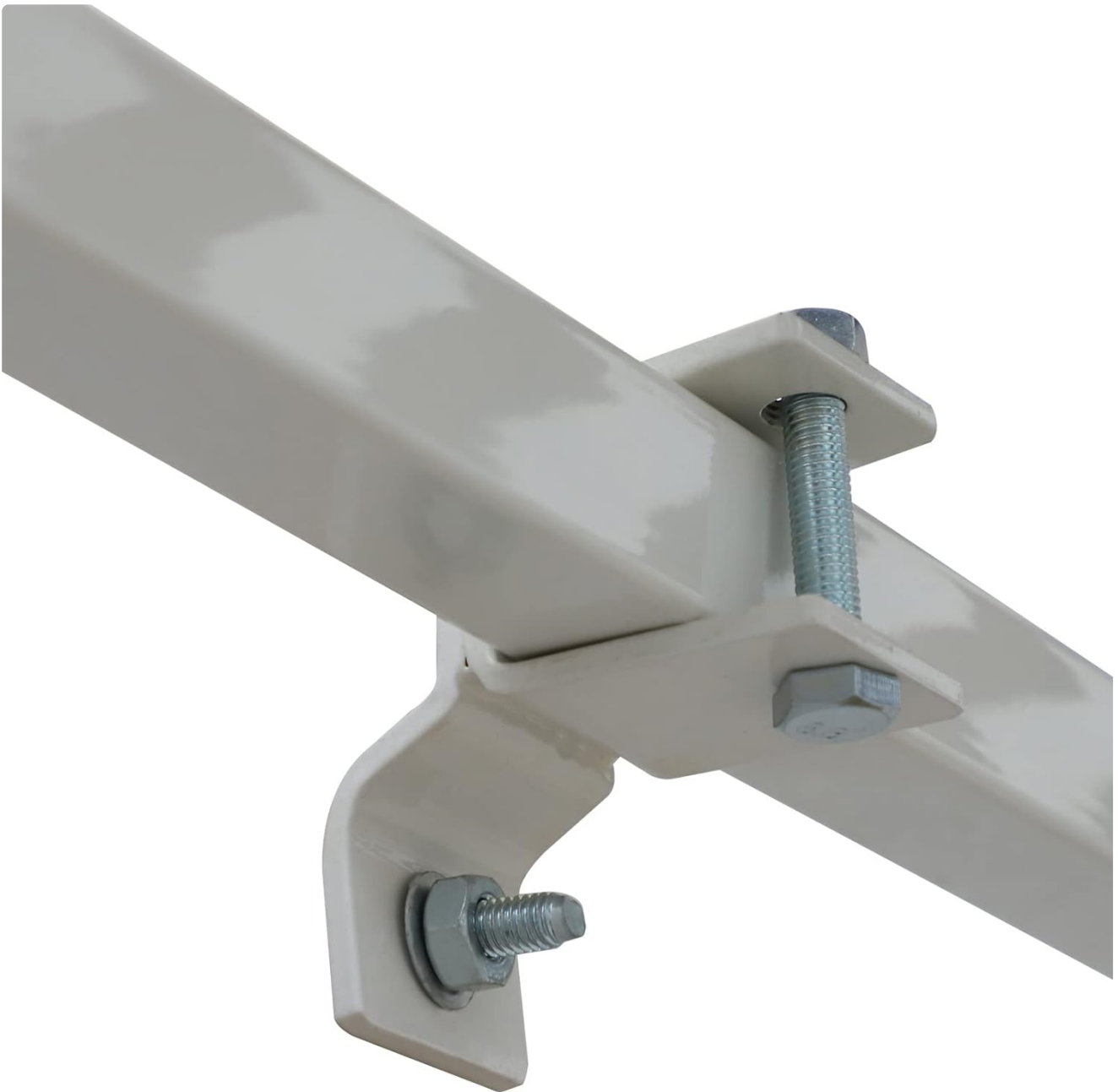
INSTALLATION SUGGESTION



Key measurements and angles for proper awning installation.

Assembly Tips:

- Follow the provided assembly instructions step-by-step. Pay close attention to diagrams and read ahead to understand the full process.
- Ensure the canvas is rolled onto the roller correctly. The roller has a square central nub on one end (left side when facing the awning as per instructions) and a round end (right side). The canvas should roll over the top, or counter-clockwise from the left (square nub) side.
- When mounting brackets, measure from the center of the actual canvas part of the awning, as the awning roller is slightly offset onto the awning arms. This allows for precise horizontal positioning.
- If the awning is not straight after initial installation, the pitch may need adjustment. This can be done by slightly loosening the appropriate bolt (the top one of the two) and adjusting the 'Jack Bolt' on the extension arm. Adjust incrementally and re-test until the desired level is achieved.



Example of a bolt connection on the awning frame.

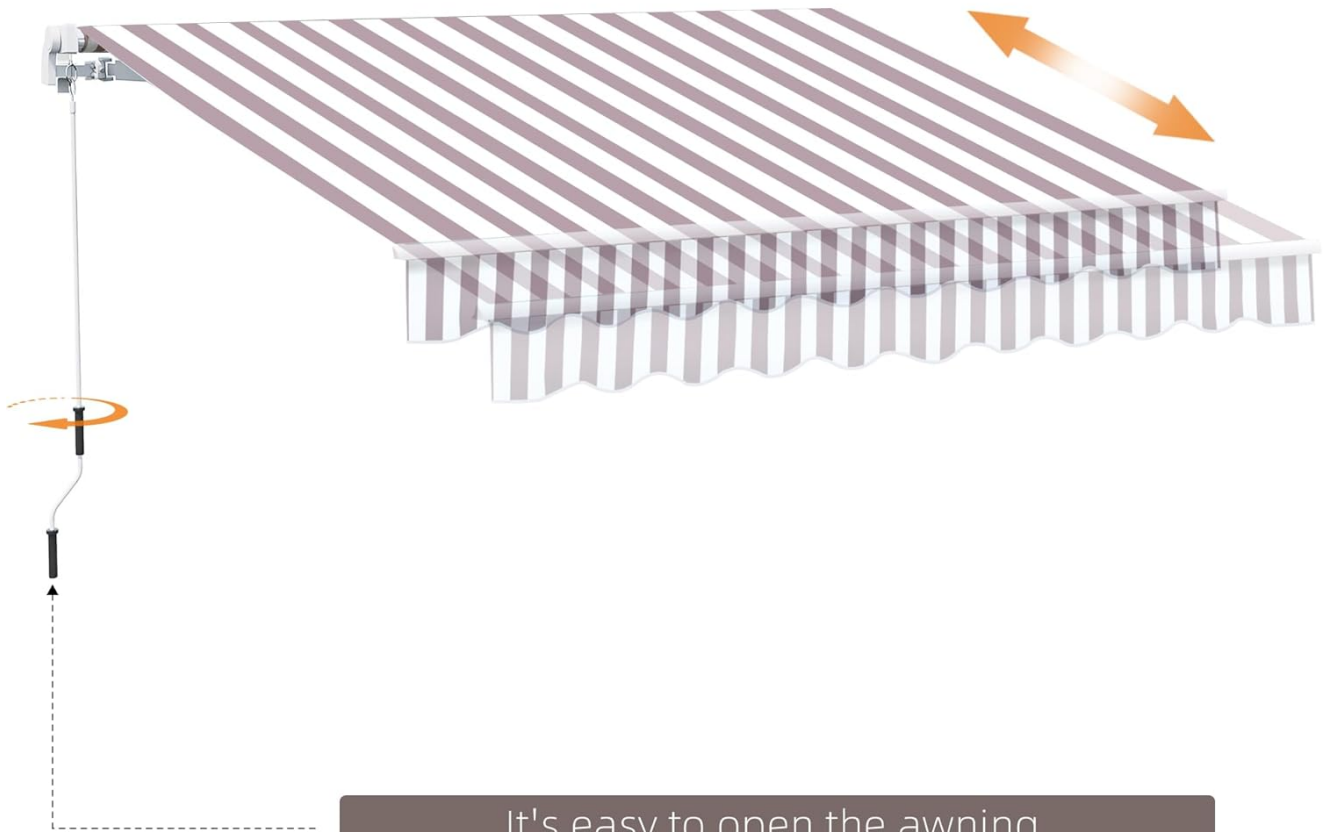
OPERATING INSTRUCTIONS

Your Outsunny awning features a manual crank handle for easy extension and retraction.

Extending and Retracting the Awning:

- To extend the awning, insert the manual crank handle into the designated loop or hook on the awning mechanism.
- Turn the crank handle clockwise to extend the awning to your desired projection. The awning can extend up to 96.5 inches (8 feet).
- To retract the awning, turn the crank handle counter-clockwise until the awning is fully closed against the wall.

RETRACTABLE DESIGN



It's easy to open the awning by using the crank handle

The awning's retractable design allows for easy manual operation.

Adjusting Awning Pitch:

The height of the extension arm on the telescopic rod can be adjusted to provide optimal shade. Loosen the locking screw on the arm, adjust the height, and then re-tighten the screw securely.

MAINTENANCE

Proper maintenance will extend the life of your awning.

- **Fabric Care:** The awning fabric is UV and water-resistant. To clean, use a soft brush or cloth with mild soap and water. Rinse thoroughly with clean water and allow to air dry completely before retracting to prevent mildew. Do not use harsh chemicals or abrasive cleaners.
- **Frame Care:** Periodically wipe down the aluminum and steel frame with a damp cloth to remove dirt and debris. Check all bolts and screws for tightness and re-tighten as needed.
- **Winter Storage:** In areas with harsh winters, it is recommended to keep the awning fully retracted when not in use or during periods of heavy snow and ice.

DURABLE MATERIAL

▼ 280g/m² polyester fabric with PU coating



Anti-UV



Reduce Heat

The awning features durable polyester fabric with PU coating for UV and water resistance.

TROUBLESHOOTING

This section addresses common issues you might encounter.

Awning Not Extending/Retracting Smoothly:

- Check for any obstructions in the path of the arms or fabric.

- Ensure the crank handle is properly engaged with the mechanism.
- Inspect the arms for any damage or bending.

Awning Not Level:

- This can occur if the initial pitch setting is off or if the mounting surface is not perfectly level.
- Refer to the