

## PIXEL G1s

# PIXEL G1s RGB Video Light Instruction Manual

Model: G1s

## 1. INTRODUCTION

This manual provides detailed instructions for the safe and effective operation of your PIXEL G1s RGB Video Light. Please read this manual thoroughly before use and retain it for future reference. The PIXEL G1s is a versatile and portable RGB video light designed for various photography and videography applications, featuring app control, a high-capacity battery, and multiple lighting effects.

## 2. PACKAGE CONTENTS

Verify that all items listed below are included in your package. If any items are missing or damaged, please contact your retailer.

- 1 x PIXEL G1s RGB Video Light
- 1 x 1/4" Screw
- 1 x Ball Head Adapter
- 1 x Type-C Charging Cable
- 1 x User Manual



*Image: Contents of the PIXEL G1s package.*

### 3. PRODUCT FEATURES

---

- **Convenient APP Control:** Adjust hue (0-359°), saturation (0-100%), brightness (0-100%), and color temperature (2500K-8500K) via smartphone.
- **High-Capacity Battery:** Built-in 6400mAh battery provides over 210 minutes of runtime at 100% brightness. Full charge in approximately 2.5 hours via USB Type-C.
- **Versatile Mounting:** 360° rotating arm with cold shoe allows for flexible positioning on cameras, microphones, or smartphones.
- **Precision LCD Display:** Intuitive screen provides real-time readings of settings and battery level.
- **10 Scene Effects:** Pre-programmed lighting effects for various creative scenarios.
- **Durable Construction:** Aluminum alloy body ensures longevity and portability.



*Image: Overview of the PIXEL G1s RGB Video Light.*

## 4. SETUP

### 4.1 Initial Charging

Before first use, fully charge the PIXEL G1s using the provided Type-C charging cable. Connect the cable to the USB Type-C port on the device and a compatible USB power source. The LCD display will indicate charging status.

# 6400mAh

Large-capacity Battery 3.7V/23.68Wh

# 210min

Long working time

# 2.5h

Charging time



*Image: Charging the PIXEL G1s via USB Type-C.*

## 4.2 Attaching the Ball Head Adapter

The included ball head adapter allows for versatile mounting. Screw the 1/4" screw into the bottom of the light, then attach the ball head adapter to the screw. This assembly can then be mounted onto tripods, light stands, or camera hot shoes.



*Image: Demonstrating the 360° rotating arm and mounting options.*

## 5. OPERATING INSTRUCTIONS

### 5.1 Power On/Off

To power on the device, slide the power switch located on the side of the unit. To power off, slide the switch back to the OFF position.

### 5.2 Controls and Display

The PIXEL G1s features an intuitive LCD display on the back and control dials/buttons on the side for easy adjustment.



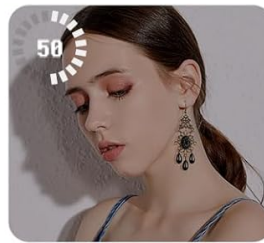
*Image: LCD display and control buttons.*

### 5.3 Modes of Operation

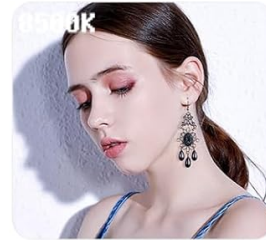
The light offers several modes for different lighting needs:

- **CCT Mode (Color Temperature):** Adjust brightness from 0-100% and color temperature from 2500K (warm) to 8500K (cool).
- **RGB Mode:** Adjust hue (0-359°), saturation (0-100%), and brightness (0-100%) to achieve any desired color.
- **Special Effects Mode:** Choose from 10 pre-programmed scene effects like lightning, ambulance, police, fire truck, candle light, and more.

  
**0-100**  
Brightness  
adjustment



  
**2500K-8500K**  
Color temperature  
adjustment



  
**0-359**  
RGB color  
adjustment



Image: Visual guide for brightness, color temperature, and RGB adjustments.



# 10 Common Light Scene Effects

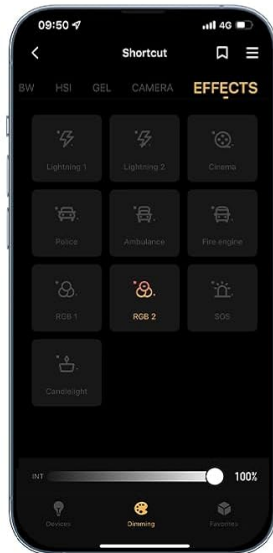


Image: Examples of the 10 common light scene effects.

## 5.4 APP Control

Download the official PIXEL app to control the G1s light wirelessly via your smartphone. The app provides comprehensive control over all settings and effects, offering enhanced flexibility.



*Image: Smartphone app interface for wireless control.*

### Official Product Video: PIXEL G1s RGB Video Light Overview

Your browser does not support the video tag.

*This video provides a brief overview of the PIXEL G1s RGB Video Light's features and functionality.*

## 6. CHARGING AND BATTERY

The PIXEL G1s is equipped with a 6400mAh rechargeable Lithium-Ion battery. A full charge takes approximately 2.5 hours using the provided USB Type-C cable. The battery provides up to 210 minutes of continuous use at 100% brightness. The device includes built-in overheating protection for safe operation.

# 6400mAh Large-capacity Battery

Built-in 6400mAh/3.7V/23.68Wh



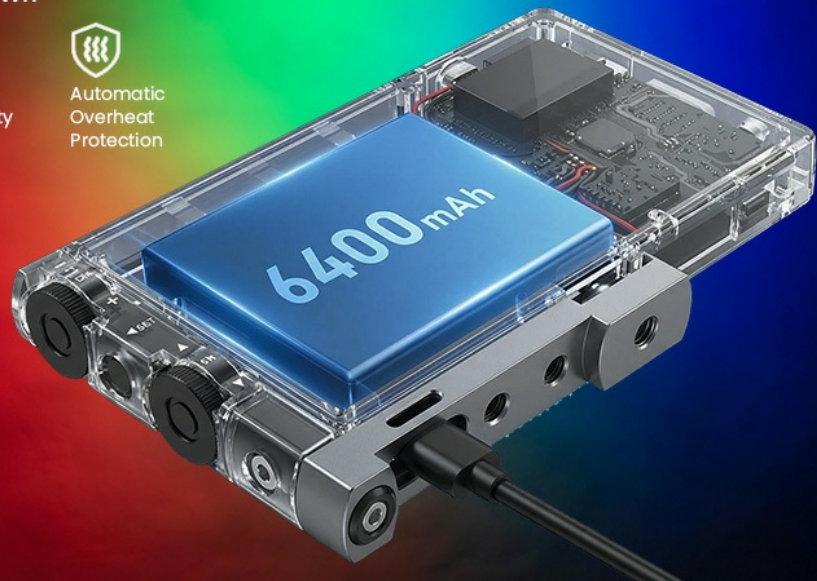
210 Minutes  
at Max Brightness



Built-in  
Large-capacity  
Battery



Automatic  
Overheat  
Protection



*Image: Battery specifications and charging details.*

## 7. MOUNTING OPTIONS

The PIXEL G1s is designed for flexible mounting:

- **1/4" Screw Hole:** Standard screw hole for attaching to tripods, light stands, or other photography accessories.
- **Ball Head Adapter:** Use the included ball head adapter for 360° rotation and tilt, allowing precise light positioning.
- **Cold Shoe Mount:** The rotating arm features a cold shoe mount for attaching to cameras or other compatible devices.

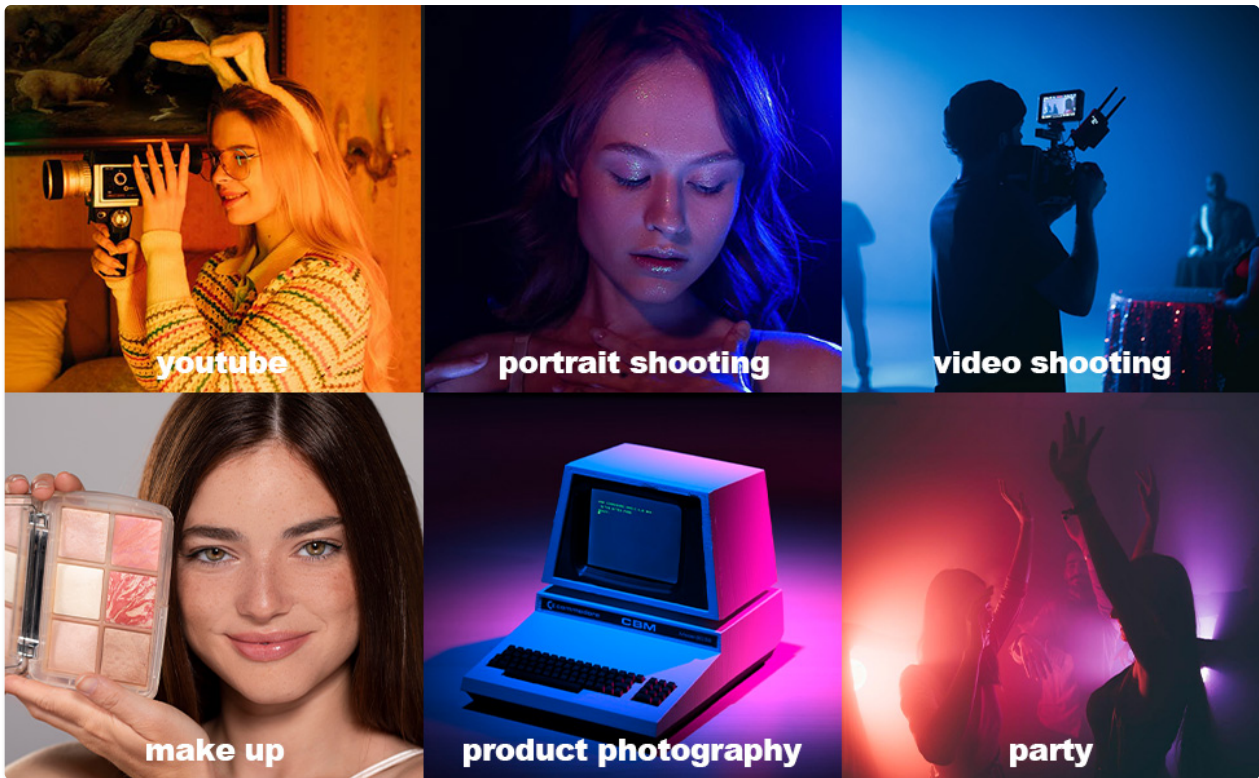


Image: Different mounting and positioning examples.

## 8. MAINTENANCE

- Keep the device dry. Do not expose it to moisture or rain.
- Clean the light panel and body with a soft, dry cloth. Avoid using harsh chemicals or abrasive materials.
- Store the device in a cool, dry place when not in use.
- Avoid dropping or subjecting the device to strong impacts.

## 9. TROUBLESHOOTING

- **Light not turning on:** Ensure the battery is charged. Check the power switch position.
- **App connection issues:** Ensure Bluetooth is enabled on your smartphone and the light. Restart both the app and the light.
- **Inconsistent brightness/color:** Check the settings on the LCD display or within the app. Ensure the device is not in a low power state.

## 10. SPECIFICATIONS

Specification	Detail
Brand	PIXEL
Model Number	G1s
Product Dimensions	5.1"L x 0.6"W x 2.1"H (5.1 x 0.6 x 2.7 inches)
Item Weight	1.06 pounds
Battery Type	1 Lithium Ion battery (included)

Battery Capacity	6400mAh
Battery Life (100% Brightness)	210 minutes
Charging Time	Approx. 2.5 hours
Color Temperature Range	2500K-8500K
Connectivity Technology	USB
Hardware Interface	USB

## 11. WARRANTY AND SUPPORT

For warranty information and customer support, please refer to the official PIXEL website or contact your retailer. Keep your purchase receipt as proof of purchase.