

Lowrance HOOK Reveal 5-inch SplitShot

Lowrance HOOK Reveal 5-inch SplitShot Fish Finder Instruction Manual

Model: HOOK Reveal 5-inch SplitShot (000-15503-001)

1. INTRODUCTION

This manual provides detailed instructions for the installation, operation, and maintenance of your Lowrance HOOK Reveal 5-inch SplitShot Fish Finder. Please read this manual thoroughly before using the device to ensure proper functionality and to maximize your fishing experience. The HOOK Reveal series combines advanced sonar technologies with user-friendly navigation features.



Figure 1.1: The Lowrance HOOK Reveal 5-inch SplitShot Fish Finder unit. This image displays the main unit with its screen showing sonar data and the control buttons on the right side.

2. INCLUDED COMPONENTS

Verify that all components are present in the package before beginning installation:

- HOOK Reveal Fish Finder Unit
- SplitShot Skimmer Transducer
- Mounting Bracket
- Power Cable
- Fuse and Fuse Holder
- Corner Clips

3. SETUP AND INSTALLATION

3.1 Mounting the Display Unit

The HOOK Reveal unit can be mounted using the included gimbal bracket, flush-mounted into a dash, or installed on a front dash. Choose a location that provides clear visibility and easy access to controls, away from direct sunlight if possible, though the SolarMAX display is designed for daylight visibility.

1. **Gimbal Bracket Mount:** Secure the gimbal bracket to a flat surface using appropriate fasteners. Attach the

HOOK Reveal unit to the bracket and adjust the viewing angle.

2. **Flush Mount:** For a flush mount, carefully cut an opening in the dash according to the provided template (not included in this manual, refer to full product documentation). Insert the unit and secure it with the corner clips.
3. **Front Dash Mount:** Similar to the gimbal bracket, ensure a stable and secure attachment point on the front dash.



Figure 3.1: A user interacting with the Lowrance HOOK Reveal unit mounted on a boat's console. This illustrates a typical installation scenario for the display unit.

3.2 Transducer Installation

The SplitShot Skimmer Transducer is crucial for sonar functionality. Proper placement is essential for optimal performance. It should be mounted in a location with minimal turbulence and clear water flow.

1. **Transom Mount:** The most common installation for the SplitShot transducer is on the transom of the boat. Ensure the transducer face is submerged and clear of obstructions like propellers or strakes.
2. **Cable Routing:** Route the transducer cable away from electrical interference sources and secure it to prevent damage.
3. **Connection:** Connect the transducer cable to the corresponding port on the back of the HOOK Reveal unit.

3.3 Power Connection

Connect the power cable to a 12V DC power source on your boat. Ensure the fuse and fuse holder are correctly installed in the positive (+) line of the power cable to protect the unit from power surges.

- Connect the red wire to the positive (+) terminal of the battery.
- Connect the black wire to the negative (-) terminal of the battery or a suitable ground point.
- Ensure all connections are secure and waterproof.

4. OPERATING YOUR HOOK REVEAL

4.1 Basic Controls and Keypad

The HOOK Reveal features a dedicated keypad for easy menu operation and navigation. Familiarize yourself with the buttons:

- **Power Button:** Press and hold to power on/off. Short press for quick menu options.
- **Zoom In/Out (+/-):** Adjusts zoom levels on sonar and chart views.
- **Arrow Keys (Directional Pad):** Navigate menus and move cursor on screen.
- **Enter/Menu Button:** Confirms selections and accesses main menus.
- **Waypoint Button:** Quickly mark a waypoint at your current location.
- **Pages Button:** Cycles through available screen layouts.

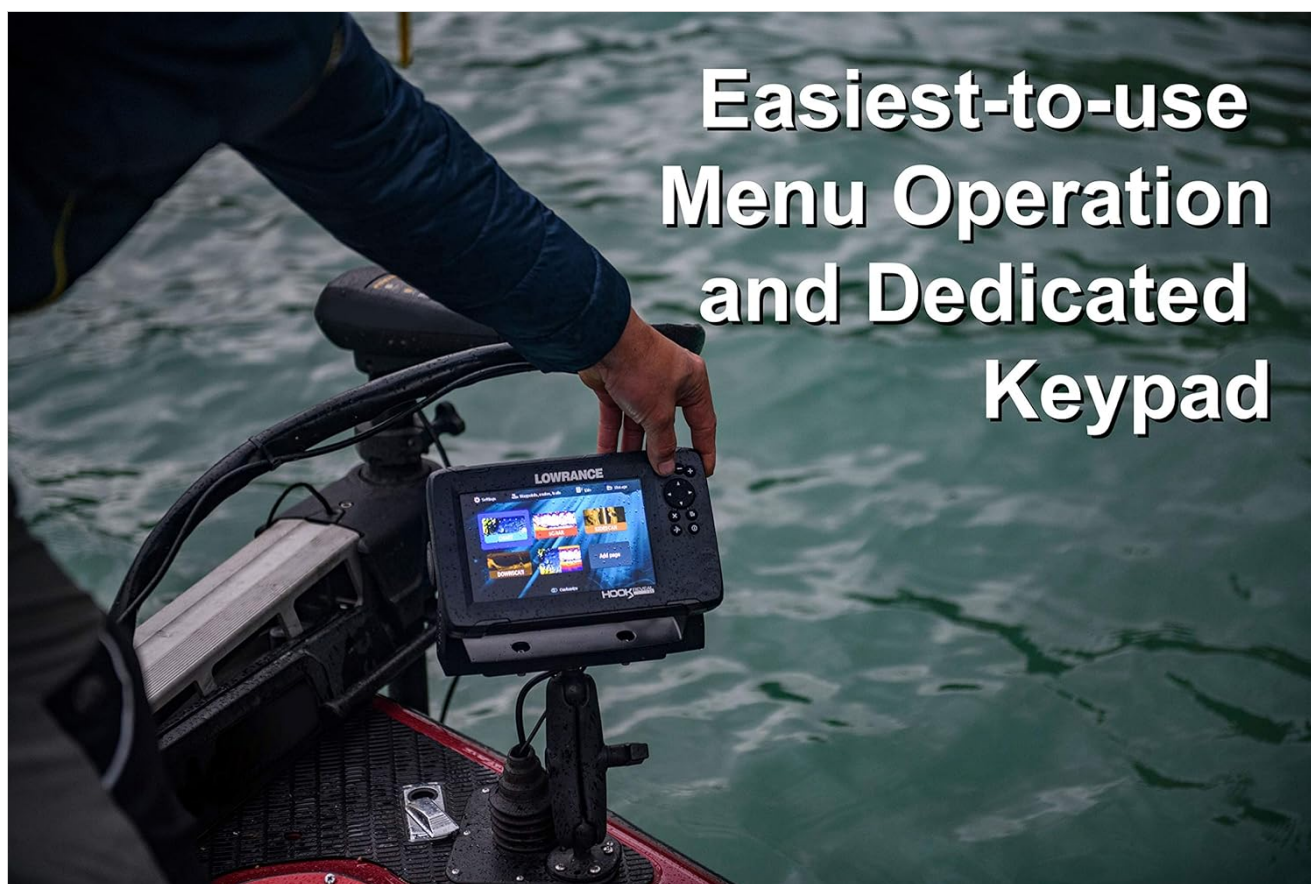


Figure 4.1: The Lowrance HOOK Reveal display showing various menu options and the dedicated keypad on the right for intuitive control.

4.2 Sonar Modes: CHIRP, DownScan, and FishReveal

Your HOOK Reveal unit utilizes advanced sonar technologies to provide clear views of fish and underwater structure.

- **CHIRP Sonar:** Provides excellent target separation, making fish easier to identify. It uses a range of frequencies to create a clearer, more detailed image of the water column.

CHIRP Sonar

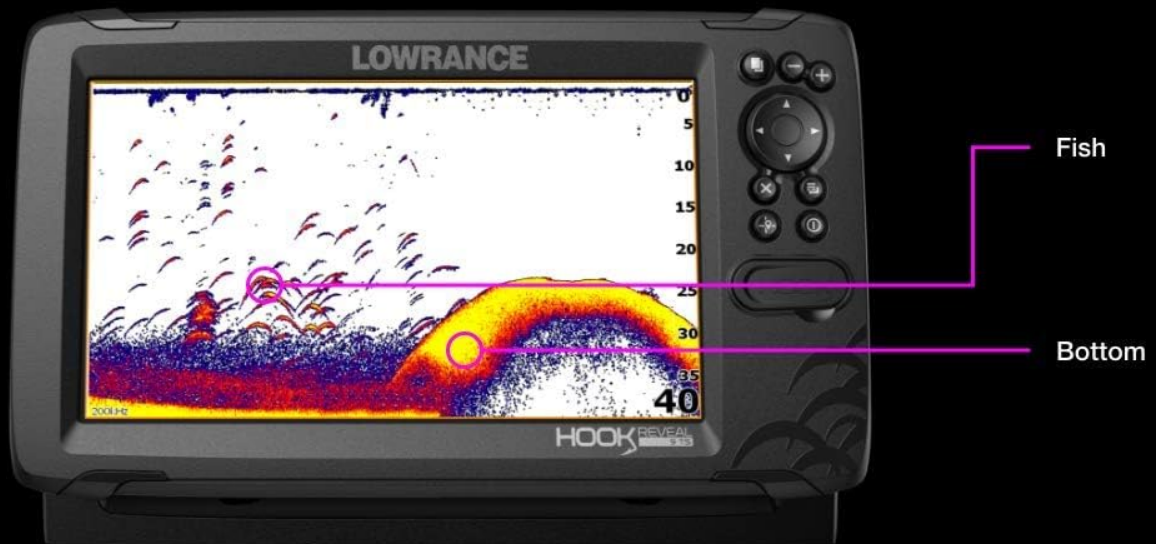


Figure 4.2: A screen capture of the HOOK Reveal displaying CHIRP Sonar. Fish arches and the bottom contour are clearly visible, with annotations pointing to fish and bottom.

- **DownScan Imaging:** Offers high-resolution images of structure below your boat, allowing you to distinguish between different types of underwater features like brush piles, rocks, and ledges.
- **FishReveal:** This feature combines the target separation of CHIRP sonar with the high-resolution structure views of DownScan Imaging. Fish targets "light up" on the display, making them easier to distinguish from structure.

FishReveal

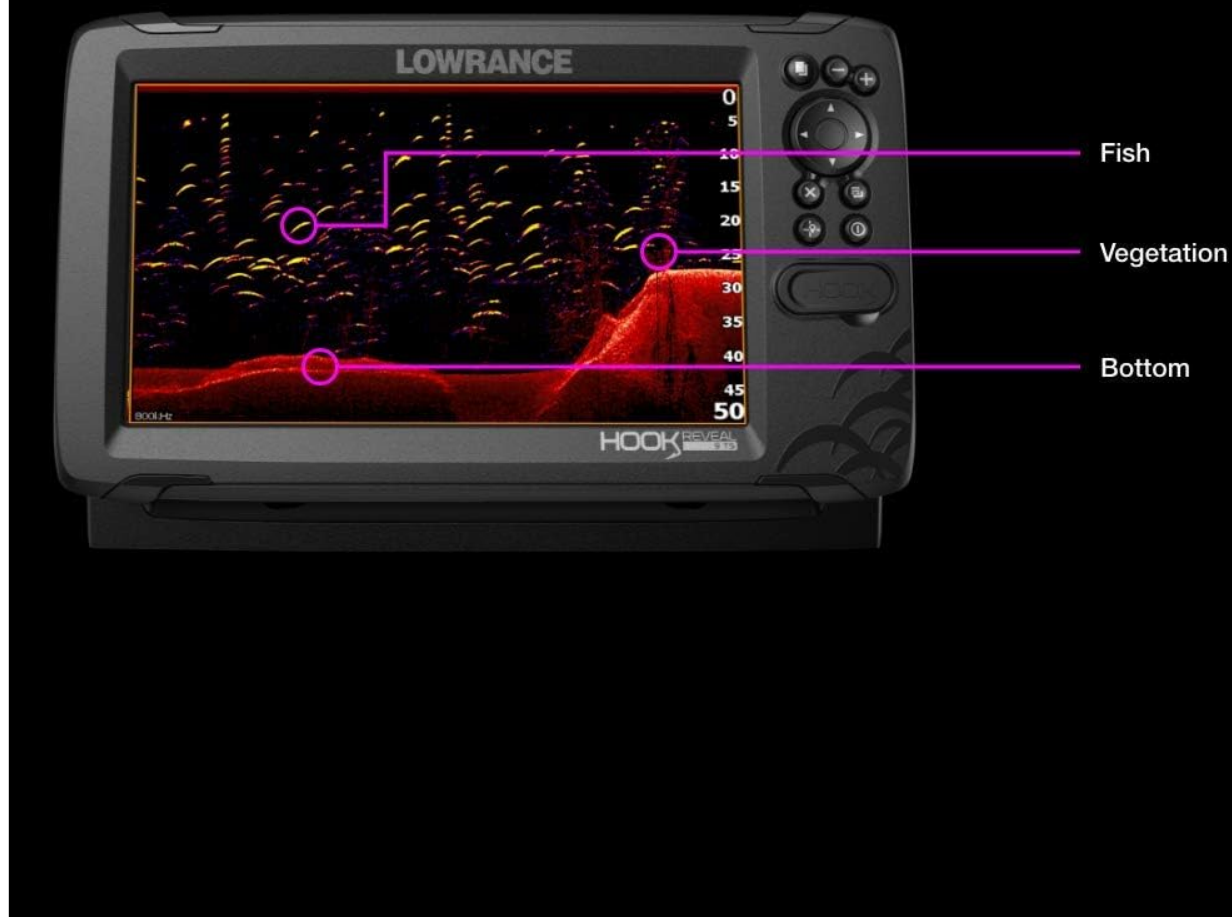


Figure 4.3: A screen capture of the HOOK Reveal displaying FishReveal. This mode highlights fish targets within the DownScan view, making them stand out from vegetation and the bottom.

4.3 GPS Plotter and Navigation

The integrated GPS Plotter simplifies navigation. You can easily create routes, follow trails, and mark waypoints to your favorite fishing spots. Note that "X" models of HOOK Reveal do not include a map or support add-on mapping.

- **Waypoints:** Press the Waypoint button to mark your current location. You can edit waypoint names and symbols.
- **Routes:** Create routes by connecting multiple waypoints.
- **Trails:** The unit automatically records your path as a trail, which can be saved and followed later.



Figure 4.4: The Lowrance HOOK Reveal display showing a split screen with a GPS map on the left and sonar data on the right. This illustrates the navigation capabilities of the unit.

4.4 Autotuning Sonar

The HOOK Reveal features autotuning sonar, which automatically adjusts settings as fishing conditions change. This minimizes the need for manual adjustments, allowing you to focus more on fishing.

4.5 Display Settings (SolarMAX)

The SolarMAX display provides clear and crisp views in various lighting conditions, including direct sunlight. Adjust backlight brightness and color palettes through the system settings menu for optimal visibility.

5. MAINTENANCE

- **Cleaning:** Clean the display screen and unit housing with a soft, damp cloth. Avoid abrasive cleaners or solvents that could damage the screen or plastic.
- **Transducer Care:** Regularly inspect the transducer for marine growth or damage. Clean it gently with a soft brush and mild soap if necessary. Ensure the transducer cable is free from kinks or cuts.
- **Software Updates:** Periodically check the Lowrance website for available software updates. Updates can

improve performance and add new features. Follow the instructions provided with the update carefully.

- **Storage:** When not in use for extended periods, store the unit in a dry, cool place, protected from extreme temperatures and direct sunlight.

6. TROUBLESHOOTING

This section addresses common issues you might encounter with your HOOK Reveal unit.

Problem	Possible Cause	Solution
Unit does not power on.	No power, faulty fuse, loose connection.	Check power cable connections, inspect fuse, ensure battery is charged.
Poor sonar image or no depth reading.	Transducer obstruction, incorrect mounting, electrical interference, low battery voltage.	Clean transducer, verify mounting position, check for nearby electrical noise sources, ensure stable 12V power supply.
Screen flickering or freezing.	Low battery voltage, software issue.	Ensure adequate battery voltage (11.4V minimum recommended), perform a soft reset, check for software updates.
GPS not acquiring satellites.	Unit obstructed, poor signal area.	Ensure clear view of the sky, move to an open area.

If you continue to experience issues, refer to the support section for further assistance.

7. SPECIFICATIONS

Brand	Lowrance
Model Name	000-15503-001
Power Source	Corded Electric (12V DC)
Screen Size	5 Inches
Display Type	LCD (SolarMAX)
Item Weight	1.5 Kilograms
Product Dimensions (LxWxH)	9.02" x 7.13" x 7.52"
Mounting Type	Front Dash, Flush Mount, Gimbal Bracket
UPC	813816006223
Transducer Type	SplitShot Skimmer
Model Year	2020

8. WARRANTY INFORMATION

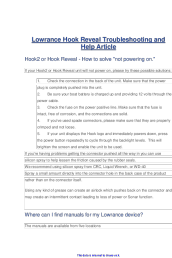


The Lowrance HOOK Reveal 5-inch SplitShot Fish Finder comes with a**1-Year Limited Warranty** from the date of purchase. This warranty covers defects in materials and workmanship under normal use. For full warranty terms and conditions, please refer to the official Lowrance warranty statement or visit the Lowrance website. Keep your proof of purchase for warranty claims.

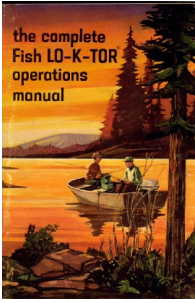
9. SUPPORT AND CONTACT

For technical assistance, product support, or to inquire about service, please visit the official Lowrance website or contact their customer service department. You can find contact information and additional resources on the [Lowrance Store on Amazon](#) or the main Lowrance website.

When contacting support, please have your product model (HOOK Reveal 5-inch SplitShot) and model number (000-15503-001) available.

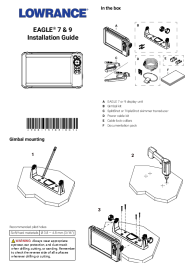
Related Documents - HOOK Reveal 5-inch SplitShot

	<p>Lowrance Hook Reveal Troubleshooting and Help Guide</p> <p>Comprehensive troubleshooting guide for Lowrance Hook2 and Hook Reveal marine electronics, covering common issues like powering problems, screen display errors, depth reading inaccuracies, and guidance on selecting the right transducer.</p>
	<p>Lowrance ActiveTarget 2 Installation Manual</p> <p>Installation manual for the Lowrance ActiveTarget 2 live sonar system, detailing setup, wiring, and technical specifications.</p>
	<p>Lowrance Elite-4x HDI Operation Manual: Features, Settings, and Specifications</p> <p>Comprehensive operation manual for the Lowrance Elite-4x HDI fishfinder and sonar unit. This guide details unit controls, basic operation, sonar and DownScan features, system settings, specifications, and contact information.</p>



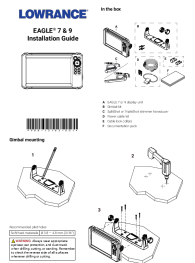
[Lowrance Fish LO-K-TOR Operations Manual: Your Guide to Electronic Fishing](#)

A comprehensive operations manual for the Lowrance Fish LO-K-TOR, detailing how to use the fish finder, interpret sonar signals, identify fish, understand bottom conditions, and troubleshoot common issues for effective fishing.



[Lowrance Eagle 7 & 9 Installation Guide](#)

This guide provides instructions for installing the Lowrance Eagle 7 and 9 display units, including gimbal and panel mounting, wiring, and technical specifications.



[Lowrance Eagle 7 & 9 Installation Guide](#)

Installation guide for the Lowrance Eagle 7 and Eagle 9 series fishfinder/GPS units, covering gimbal and panel mounting, wiring, and technical specifications.