



[Manuals.plus](#) /

> [COSTWAY](#) /

> COSTWAY 13.2 lbs Capacity Front Load Compact Tumble Laundry Stainless Steel Tub, Easy Control Button Panel Downside for Variety Drying Mode, White 1700W Electric Portable Clothes Dryer

## COSTWAY 1700W Electric Portable Clothes Dryer

# COSTWAY 13.2 lbs Capacity Front Load Compact Tumble Laundry Dryer User Manual

Brand: COSTWAY | Model: 1700W Electric Portable Clothes Dryer

### 1. INTRODUCTION

This user manual provides essential information for the safe and efficient operation of your COSTWAY 13.2 lbs Capacity Front Load Compact Tumble Laundry Dryer. Please read this manual thoroughly before initial use and retain it for future reference.

The COSTWAY electric clothes dryer features a spacious 3.22 cubic feet capacity, designed to meet the drying needs of a household by accommodating up to 13.2 lbs of clothing. It is equipped with a powerful 120V/60Hz motor unit and a PTC heat element, ensuring rapid warm air flow and stable, low-noise drying performance.



Figure 1: Front view of the COSTWAY Portable Clothes Dryer, showcasing its compact design and front-load access.

## 2. IMPORTANT SAFETY INSTRUCTIONS

To reduce the risk of fire, electric shock, or injury to persons when using your appliance, follow basic precautions, including the following:

- Before using your tumble dryer, please read this manual carefully.
- Do not dry items such as foam rubber, rubber-backed articles, or clothes/pillows filled with foam rubber pads, as these materials should not be dried in the appliance.
- Always ensure the power is turned off before performing any cleaning or maintenance.
- Do not attempt to wash items inside the tumble dryer. This appliance is for drying only.
- Children should not be allowed to play with the appliance.
- This product is not sold in California.

# Adjustable Temperature

Drying According to the Material and Quantity of Clothing



**Note: Only when set in “1 hour” can you choose the corresponding options of “140°F”, “104°F” and “airing”**

Figure 2: Close-up of the dryer door, showing important safety notes and filter cleaning guidelines.

### 3. PRODUCT FEATURES

- **Large Capacity:** With a 3.22 cubic feet capacity, this front-load dryer can handle up to 13.2 lbs of laundry, suitable for daily family use.
- **Forward & Reverse Tumble Action:** The large-diameter stainless steel tumble features an inner S-shaped device that facilitates forward and reverse tumbling. This action prevents tangling, effectively removes wrinkles, and restores the fluffy and comfortable texture of fabrics at moderate temperatures.

# Reverse Tumble Function

Avoids tangling & Takes great care of your cloths



## Unidirectional Tumble

Clothes are tangled up and difficult to dry



## Reverse Tumble

Clothes are fluffy and evenly dried

Figure 3: Illustration of the dryer's reverse tumble function, highlighting its ability to prevent clothes from tangling and ensure even drying.

- **Energy Efficient & Quiet Tumbling:** The dryer is designed for efficiency with an automatic shut-off feature to save energy. Its quiet tumbling infrastructure operates at a low noise level (58-62dB), allowing for use without significant disruption.
- **Portable & Space-saving:** Weighing only 59.5 lbs and measuring 23.5" (L) x 20" (W) x 27.5" (H), this electric laundry dryer is ideal for apartments, dorm rooms, or small spaces. It can be wall-mounted, placed on firm horizontal ground, or rack-mounted (bracket not included).
- **Multiple Filtering System:** Equipped with a four-layer intake and exhaust filter system, the dryer effectively blocks floating matter and helps remove odors, ensuring clean and fresh laundry.

# Multiple Filtering

3 layer filtration block floating matter remove odors



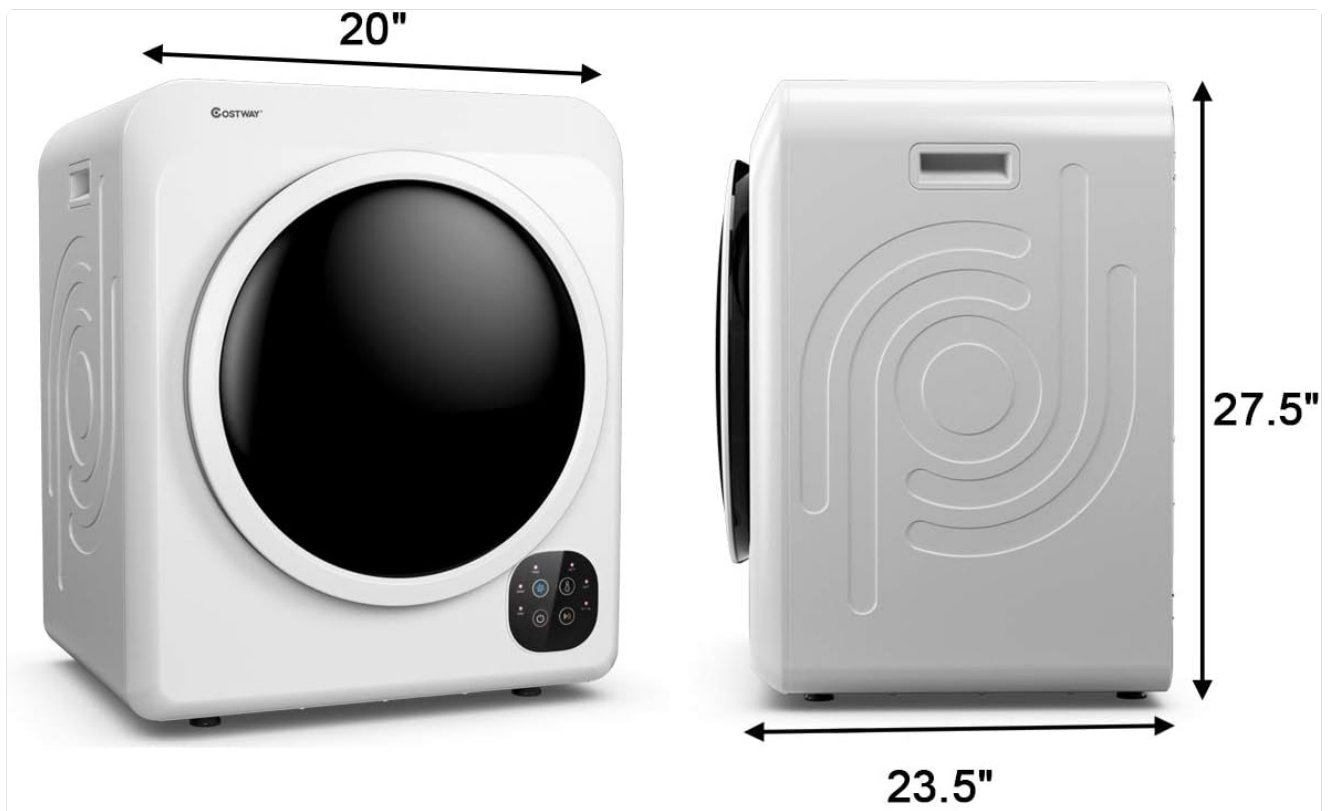
Figure 4: Visual representation of the dryer's multi-layer filtration system, designed to capture lint and remove odors.

## 4. SETUP AND INSTALLATION

The COSTWAY Portable Clothes Dryer offers flexible installation options to suit your living space:

- **Freestanding Placement:** Place the dryer on a firm, horizontal surface. Ensure there is adequate space around the unit for proper ventilation and access.
- **Wall Mounting:** The dryer can be mounted on a wall to save floor space. A suitable wall-mounting bracket (not included) is required. Ensure the wall can support the dryer's weight (59.5 lbs) plus the weight of wet laundry.
- **Rack Mounting:** The dryer can also be placed on a sturdy rack. Ensure the rack is stable and capable of supporting the appliance's weight.

For optimal performance, ensure the dryer is properly vented. Connect the exhaust vent to an appropriate outdoor vent or a lint trap system to prevent moisture and lint buildup in your living space.



|                    |           |
|--------------------|-----------|
| Net Weight:        | 59.5lbs   |
| Drying Capacity:   | 3.22cuft  |
| Voltage/Frequency: | 110V/60Hz |
| Rated Input:       | 1700W     |

Figure 5: Product dimensions and specifications table, useful for planning placement and installation.

## 5. OPERATING INSTRUCTIONS

The COSTWAY dryer features an intuitive control panel for easy operation. Before starting, ensure the dryer is plugged into a 120V, 60Hz power outlet and the lint filter is clean.

# Multi-functional Control Panel

## Programme the optimum drying level



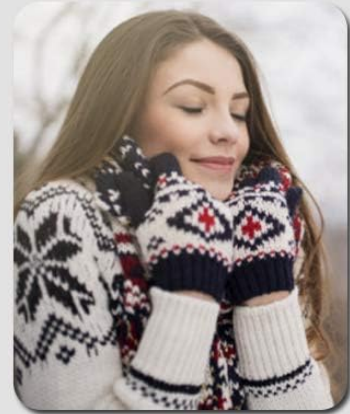
Convention Drying Cloths

140°F



Cotton

104°F



Dispel Peculiar Smell

Airing



Temperature Selection Key



Program Selection Key



Power Supply Key



Start/Pause Key

Figure 6: The multi-functional control panel with clearly labeled buttons for various drying modes and temperature settings.

### Control Panel Functions:

- **Power Supply Key:** Turns the dryer on or off.
- **Program Selection Key:** Cycles through different drying programs.
- **Temperature Selection Key:** Adjusts the drying temperature.
- **Start/Pause Key:** Starts or pauses the drying cycle.

### Drying Modes:

- **1 Hour:** A timed drying cycle. When this mode is selected, you can choose specific temperature options.
- **140°F (Conventional Drying):** Ideal for general clothing items.
- **104°F (Cotton):** Suitable for cotton fabrics, providing gentle drying.
- **Airing:** A no-heat cycle for dispelling peculiar smells or fluffing items.
- **Smart:** An intelligent mode that automatically detects moisture levels and adjusts drying time for optimal results.
- **Extra:** Provides additional drying time for heavily damp items.

# Adjustable Temperature

Drying According to the Material and Quantity of Clothing



**Note: Only when set in "1 hour" can you choose the corresponding options of "140°F", "104°F" and "airing"**

Figure 7: Visual guide to selecting appropriate drying temperatures based on fabric type, including 140°F for conventional drying, 104°F for cotton, and Airing for odor removal.

## Drying Process:

1. Load laundry into the drum, ensuring not to overload the 13.2 lbs capacity.
2. Close the dryer door securely.
3. Press the Power Supply Key to turn on the appliance.
4. Select your desired drying program using the Program Selection Key. If "1 Hour" is chosen, select the temperature (140°F or 104°F) or "Airing" mode.
5. Press the Start/Pause Key to begin the drying cycle.
6. The dryer will automatically stop when the cycle is complete or if the "Smart" mode detects dryness.

## 6. MAINTENANCE AND CARE

Regular maintenance ensures the longevity and efficient performance of your COSTWAY dryer.

## Cleaning the Filter:

The dryer is equipped with a four-layer intake and exhaust filter system. It is crucial to clean the lint filter before each use to maintain drying efficiency and prevent fire hazards.

- The lint filter must be cleaned before each use.
- The intake filter must be cleaned once a month.
- The intake filter may be cleaned with water.



Figure 8: Detailed view of the dryer's filtration components, including the exhaust filter, lint filter, and exhaust vent shroud, with instructions for cleaning.

## General Cleaning:

- Wipe the exterior of the dryer with a soft, damp cloth. Avoid abrasive cleaners.
- Periodically check the exhaust hose for any blockages or damage.

## 7. TROUBLESHOOTING

If you encounter issues with your dryer, refer to the following common problems and their solutions:

| Problem                          | Possible Cause   | Solution  |
|----------------------------------|--|---|
| Dryer does not start             | Not plugged in; Door not closed properly; Power outage.                                | Ensure power cord is securely plugged in; Close the door firmly; Check household circuit breaker.                             |
| Clothes not drying completely    | Overloaded; Lint filter clogged; Incorrect program selected; Room temperature too low. | Reduce load size; Clean lint filter thoroughly; Select appropriate drying mode/temperature; Ensure adequate room temperature. |
| Excessive noise during operation | Dryer not level; Foreign objects in drum; Overloaded.                                  | Adjust leveling feet; Check drum for loose items; Reduce load size.   |
| Dryer stops mid-cycle            | Overheating; Power interruption; Door opened.  | Allow dryer to cool down; Check power supply; Ensure door remains closed during operation.                                    |

If the problem persists after attempting these solutions, please contact COSTWAY customer support for assistance.

## 8. PRODUCT SPECIFICATIONS

| Specification                  | Detail                                |
|--------------------------------|---------------------------------------|
| Brand                          | COSTWAY                               |
| Model Info                     | 1700W Electric Portable Clothes Dryer |
| Item Model Number              | 1700W Electric Portable Clothes Dryer |
| Part Number                    | 24458-EPCY                            |
| Item Weight                    | 60.6 pounds                           |
| Product Dimensions (L x W x H) | 27.5 x 20 x 23.5 inches               |
| Capacity                       | 3.22 Cubic Feet (13.2 lbs)            |
| Form Factor                    | Front Load                            |
| Color                          | White                                 |
| Access Location                | Front Load                            |
| Fuel Type                      | Electric                              |
| Material Type                  | Stainless Steel                       |
| Included Components            | 1 x Electric Portable Clothes Dryer   |
| Power                          | 120V/60Hz, 1700W                      |

## 9. WARRANTY AND SUPPORT

### Warranty Information:

Specific warranty details are typically provided at the time of purchase or within the product packaging. For information regarding your product's warranty, please refer to the documentation included with your dryer or contact COSTWAY customer support directly.

### Protection Plans:

Extended protection plans may be available for purchase to provide additional coverage beyond the standard manufacturer's warranty. These plans can offer peace of mind against unexpected repairs or malfunctions.

- 2-Year Protection Plan
- 3-Year Protection Plan
- Complete Protect: One plan covers all eligible past and future purchases (monthly billing)

### Customer Support:

For any questions, technical assistance, or warranty claims, please contact COSTWAY customer support. You can often find contact information on the product packaging, the official COSTWAY website, or through your retailer.

This product is eligible for 30-day easy returns through Amazon.com.

Visit the official [COSTWAY Store](#) for more products and support.