

[Manuals.plus](#) /

> [Samsung](#) /

> SAMSUNG SHS-H505 SHS-H505FMK Digital Door Lock User Manual

Samsung SHS-H505

SAMSUNG SHS-H505 Digital Door Lock User Manual

Model: SHS-H505 / SHS-H505FMK

1. INTRODUCTION AND OVERVIEW

The SAMSUNG SHS-H505 Digital Door Lock provides advanced security and convenient access for residential and commercial environments. This touchscreen digital lock integrates multiple security features and user-friendly functions to enhance the safety and accessibility of your property.

Key features include a digital touchscreen keypad, RFID tag compatibility, automatic locking, and a robust mortise lock mechanism. The lock is designed for doors with a thickness ranging from 40mm to 60mm.



Figure 1.1: Front and rear view of the SAMSUNG SHS-H505 Digital Door Lock.

2. PRODUCT COMPONENTS

Before installation, verify that all components are present. The SHS-H505 lock system includes the following parts:

Product Components

Bolts and handleshaft sized for doors 40-60mm thick.

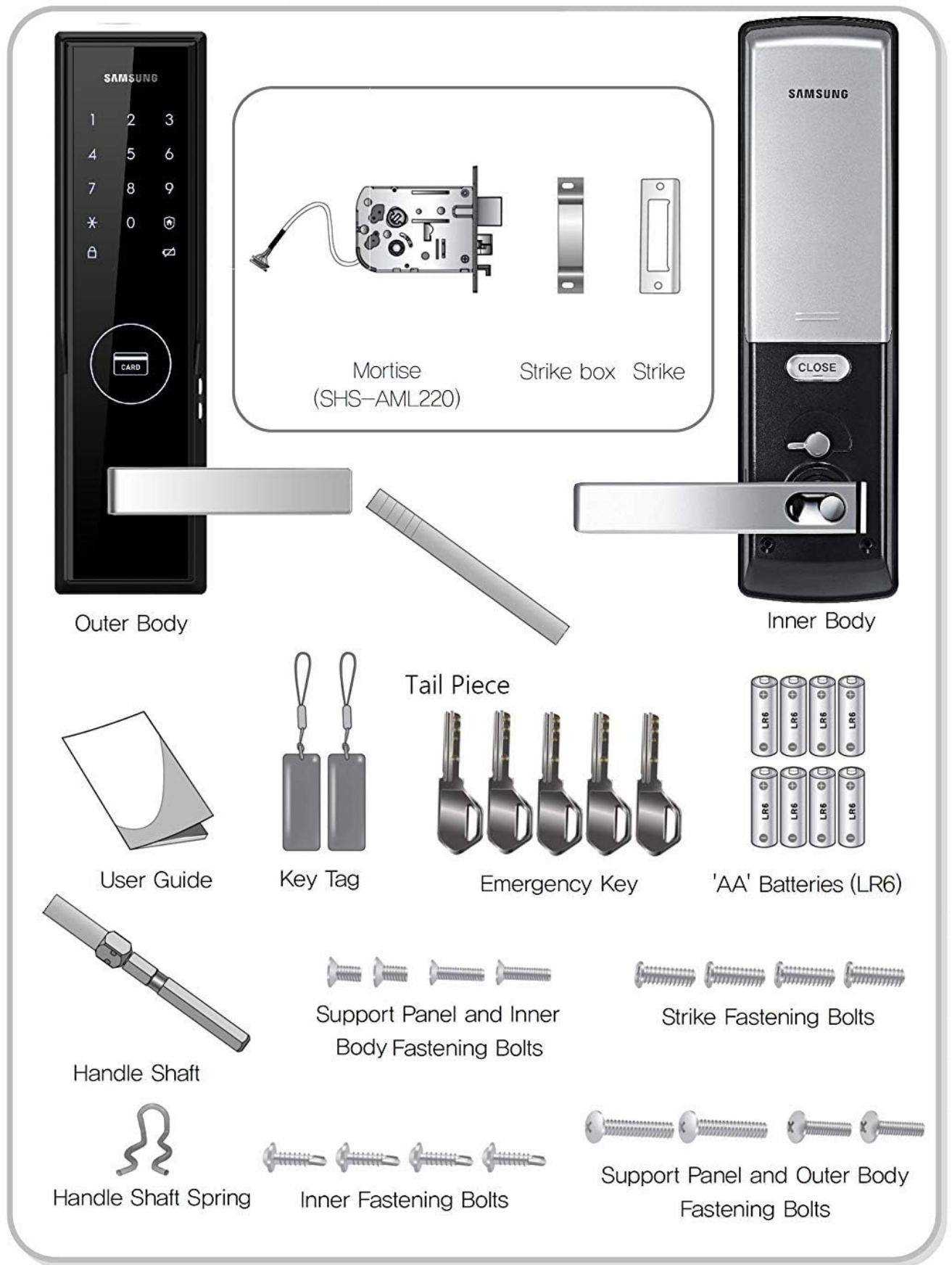


Figure 2.1: Exploded view of the SAMSUNG SHS-H505 Digital Door Lock components.

- **Outer Body:** Exterior unit with touchscreen keypad and handle.
- **Inner Body:** Interior unit with battery compartment, control buttons, and handle.

- **Mortise (SHS-AML220):** The main locking mechanism that fits inside the door. This is a small mortise with a shorter bolt set.
- **Strike Box & Strike:** Components installed on the door frame for the mortise latch and bolt.
- **Handle Shaft:** Connects the outer and inner handles to the mortise.
- **Handle Shaft Spring:** Ensures proper handle return.
- **Tail Piece:** Connects the inner handle to the mortise.
- **User Guide:** This instruction manual.
- **Key Tag (RFID):** For convenient access.
- **Emergency Key:** Mechanical keys for manual override.
- **'AA' Batteries (LR6):** Eight (8) AA alkaline batteries are required for operation.
- **Support Panel and Inner Body Fastening Bolts:** For securing the inner body.
- **Strike Fastening Bolts:** For securing the strike plate.
- **Inner Fastening Bolts:** For securing internal components.
- **Support Panel and Outer Body Fastening Bolts:** For securing the outer body.

3. SETUP AND INSTALLATION

Installation of the SAMSUNG SHS-H505 Digital Door Lock requires careful attention to door preparation and component assembly. It is recommended to consult a professional if you are unfamiliar with door hardware installation.

3.1 Door Preparation

- Ensure your door thickness is between 40mm and 60mm.
- The AML220 small mortise may require door modifications. Refer to the provided technical drawing for precise measurements.

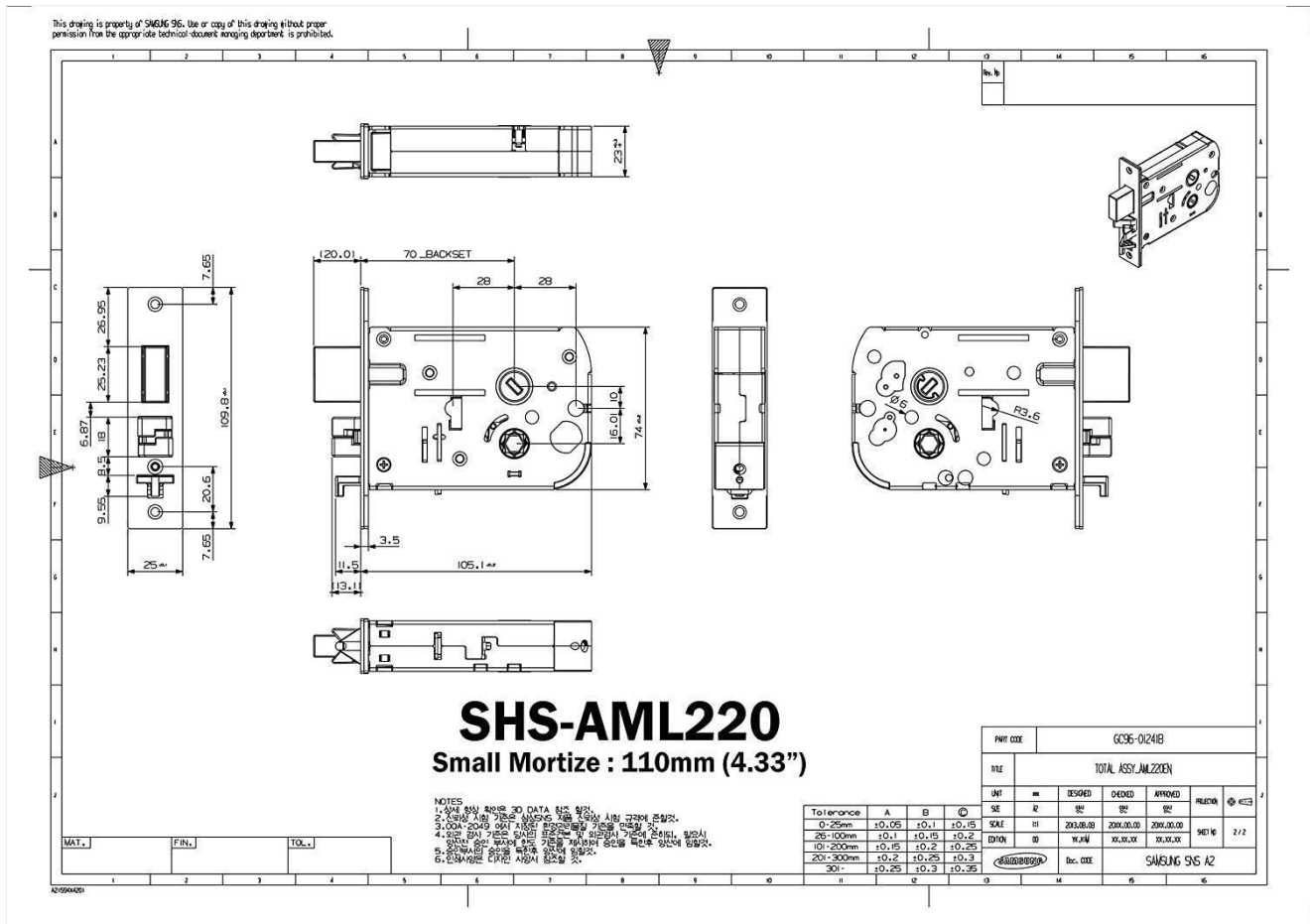


Figure 3.1: Technical drawing with dimensions for the SHS-AML220 Small Mortise.

3.2 Battery Installation

The lock operates on 8 AA alkaline batteries. Install them into the battery compartment located on the inner body. Ensure correct polarity. A low battery warning will sound after every unlocking when batteries are low.

3.3 Handle Adjustment

The handle levers are adjustable and can be set for left or right-side operation to match your door's orientation.

4. OPERATING INSTRUCTIONS

The SAMSUNG SHS-H505 offers multiple ways to access your property and various operational modes.

4.1 Accessing the Lock

- **Passcode Entry:** Use the digital touchscreen numeric keypad. Before entering your PIN, two random numbers will appear on the screen. Press these numbers first to activate the keypad and spread fingerprints, enhancing security.
- **RFID Tag Entry:** Present your registered RFID tag to the card reader area on the outer body. The lock supports auto-polling, allowing you to skip the wake-up/random security code step when using RFID.
- **Emergency Key:** In case of battery failure or system malfunction, use the provided mechanical emergency keys.

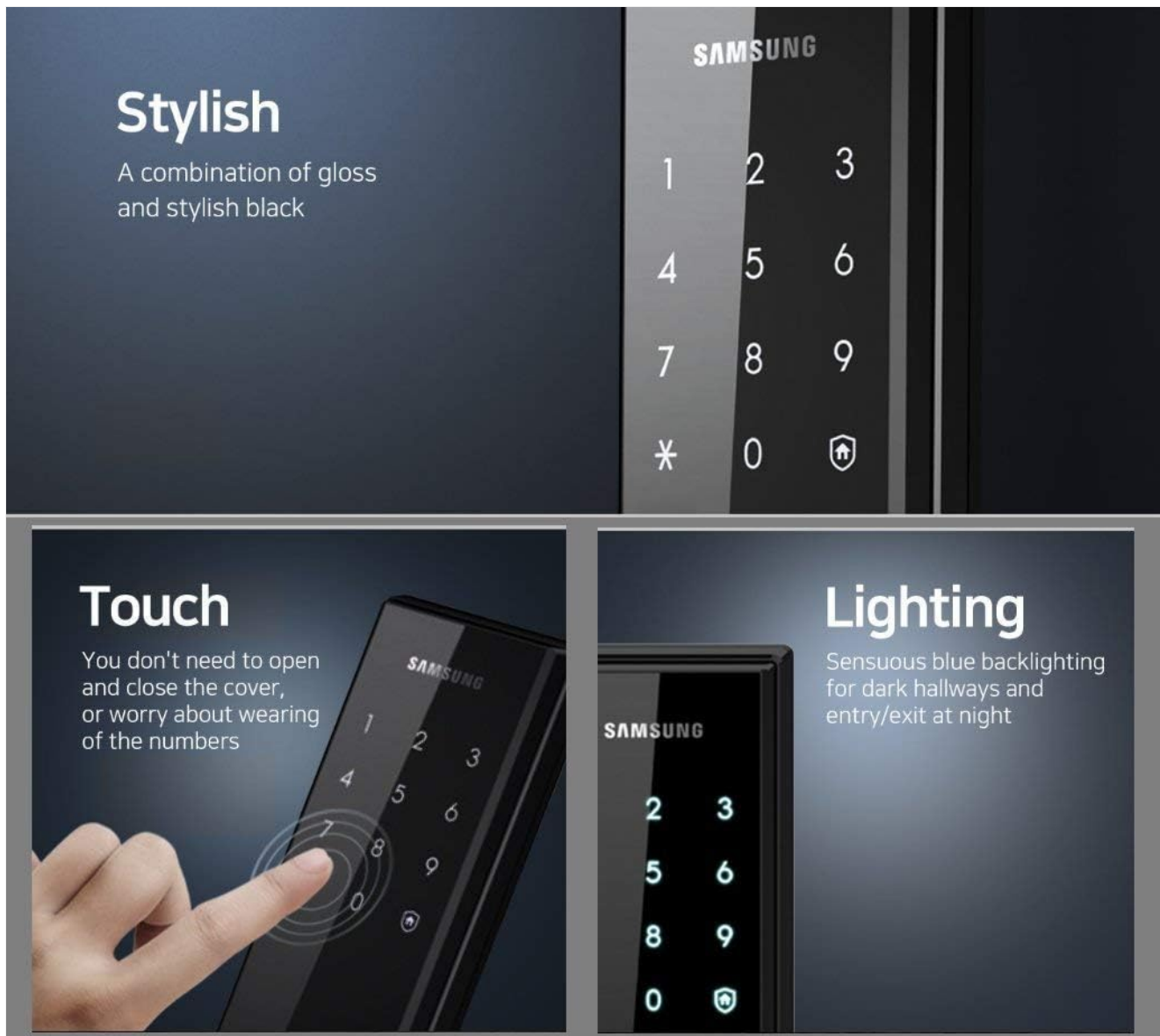


Figure 4.1: The sleek touchscreen keypad with blue backlighting for visibility.

4.2 Programming User Codes and RFID Tags

The lock supports up to 31 user PINs and RFID tags. Refer to the detailed programming section in the full user manual for step-by-step instructions on adding, modifying, or deleting user credentials.

4.3 Automatic Locking

A physical sensor detects when the door is closed, and the lock will automatically engage after 3 seconds. This feature ensures your door is always secured.

4.4 Operational Modes

Away mode for long-term leave

If you go out frequently or leave the home for a long time, you can simply push the Home button to activate the Away mode



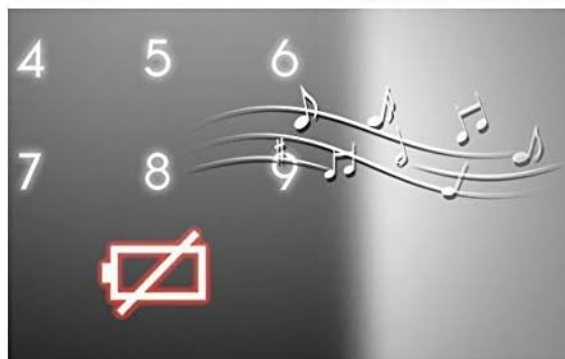
Silent Mode

If you have a little child or often enter/exit your home late at night, you can adjust the volume or mute the key tone or the door opening melody for your family or neighborhood



Battery Dead Alarm

If the batteries are running low, the door lock informs you through a specific melody or keypad LED. You can easily replace the batteries without having to check the battery life



Prank Warning

If you pull the door forcefully or enter an incorrect password more than five times consecutively, the door lock sounds a warning and disables key authentication for three minutes to help prevent trespassing

Abnormal High Temperature Warning

If an abnormally high temperature is sensed inside the home, a light on the interior side of the door lock flickers showing you the emergency exit. The door lock automatically opens for swift evacuation

Emergency power supply

If you fail to replace the batteries before they are fully discharged, you can still open the door with a 9V battery on the instant battery charging terminal



Figure 4.2: Visual representation of various operational modes and warning indicators.

- **Away Mode:** For long-term absences, activate Away Mode by pressing the Home button. This mode enhances security by triggering an alarm if the lock is operated from the inside, indicating a potential intruder.

- **Silent Mode:** To reduce noise, especially useful at night or in quiet environments, you can adjust the volume or mute the key tone and door opening melody.

5. ENHANCED SECURITY FEATURES

The SAMSUNG SHS-H505 Digital Door Lock incorporates several features to protect your property:

- **Random Security Code:** Before entering your PIN, two random numbers appear on the touchscreen, which must be pressed first. This prevents fingerprint residue patterns from revealing your code.
- **Child/Toddler Proof Handle:** The interior handle can be set to prevent accidental opening by small children.
- **Double Authentication:** Requires both a password and an RFID tag for unlocking, providing an extra layer of security.
- **Double Locking:** This feature prevents the lock from being unlocked from the outside, ideal for enhanced privacy and security when inside.
- **Anti-Theft Mode:** When activated, an alarm will sound if the lock is operated from the inside, signaling an attempted break-in or unauthorized exit.
- **Mischief Prevention:** After five consecutive failed entry attempts, the lock will sound a warning and temporarily disable operation for 3 minutes to deter unauthorized access.
- **Intrusion Alarm:** If the door is forced open while still locked, an alarm will sound.
- **Fire Warning:** A thermal sensor activates an alarm and automatically unlocks the door if the internal temperature reaches a critical level, aiding in emergency escape.
- **Anti-Tampering Lockout:** The system is designed to resist tampering and unauthorized manipulation.

6. MAINTENANCE

Regular maintenance ensures the longevity and optimal performance of your digital door lock.

6.1 Battery Replacement

When the low battery warning sounds, replace all 8 AA alkaline batteries promptly. Use only new, high-quality alkaline batteries. The typical battery life is approximately 12 months with 10 uses per day.

6.2 Cleaning

Clean the touchscreen and lock body with a soft, dry cloth. Avoid using abrasive cleaners, solvents, or harsh chemicals, as these can damage the finish and electronic components. The lock is designed to be water and dust resistant, but direct exposure to excessive moisture should be avoided.

7. TROUBLESHOOTING

This section addresses common issues you might encounter with your SAMSUNG SHS-H505 Digital Door Lock.

- **Lock is unresponsive after multiple failed attempts:** This is the Mischief Prevention feature. The lock will temporarily stop operating for 3 minutes after 5 failed entry attempts. Wait for the lockout period to end before trying again.
- **Lock does not power on (no battery):** If batteries are completely drained, use a 9V battery. Touch the 9V battery to the emergency power contact points on the outside panel to temporarily power the lock and enter as usual.
- **Alarm sounds and door unlocks automatically:** This indicates the Fire Warning feature has been activated due to high internal temperature. Ensure there is no fire hazard.

- **Low battery warning sounds:** Replace all 8 AA alkaline batteries immediately.
- **Door does not lock automatically:** Check if the physical sensor on the door frame is obstructed or misaligned. Ensure the door is fully closed.

8. SPECIFICATIONS

Detailed technical specifications for the SAMSUNG SHS-H505 Digital Door Lock:

Feature	Specification
Model Number	SHS-H505
Lock Type	Mortise Lock (AML220 Small Mortise)
Access Methods	Passcode (Touchscreen), RFID Tag, Emergency Key
Max User Memory	31 user PINs/RFID tags
Door Thickness	40mm to 60mm
Material	Zinc (Zn), Aluminum (Al), Acrylonitrile Butadiene Styrene (ABS)
Battery Type	8 x AA Alkaline Batteries
Battery Life	Approx. 12 months (at 10 uses/day)
Emergency Power	9V Battery Terminal
Operating Temperature	-25°C to +60°C
Exterior Lock Dimensions (WxHxD)	3.2 x 11.9 x 2.6 inches
Interior Lock Dimensions (WxHxD)	3.2 x 11.4 x 3.1 inches
Weight	7.07 pounds
Connectivity Protocol	Wi-Fi (for SmartThings integration, if applicable)
Special Features	Touchscreen, Random Security Code, Child Proof Handle, Double Authentication, Double Locking, Anti Theft, Mischief Prevention, Intrusion Alarm, Fire Warning, Auto Locking, Auto Polling, Low Battery Warning

9. WARRANTY AND SUPPORT

For warranty information and technical support, please refer to the official Samsung website or contact Samsung customer service directly. Keep your proof of purchase for warranty claims.

Samsung Customer Service: For assistance with installation, operation, troubleshooting, or warranty inquiries, please visit the official Samsung support page or contact their customer service hotline in your region.

Online Resources: Additional resources, FAQs, and video tutorials may be available on the Samsung support website.