

[manuals.plus](#) /

› [Quoizel](#) /

› [Quoizel Coda 39" Wide Matte Black 16-Light Island Chandelier Instruction Manual](#)

## Quoizel COD139MBK

# Quoizel Coda 39" Wide Matte Black 16-Light Island Chandelier Instruction Manual

Model: COD139MBK | Brand: Quoizel

## INTRODUCTION

---

This manual provides detailed instructions for the safe installation, operation, and maintenance of your Quoizel Coda 39" Wide Matte Black 16-Light Island Chandelier. Please read all instructions carefully before beginning installation and retain this manual for future reference. This modern farmhouse-style chandelier features a matte black finish over steel construction with a linear design and painted weathered wood accent, designed to illuminate your space effectively.



Figure 1: Front view of the Quoizel Coda 16-Light Island Chandelier.

## SAFETY INFORMATION

---

**WARNING:** Risk of electric shock. Disconnect power at the fuse box or circuit breaker before installation or servicing. Consult a qualified electrician if you are unsure about the installation process.

- All wiring must be in accordance with national and local electrical codes.
- Ensure the fixture is properly grounded.
- Do not exceed the maximum wattage specified for the bulbs.
- Handle glass components with care to prevent breakage.
- Keep flammable materials away from the light bulbs.
- This product contains chemicals known to the State of California to cause cancer and birth defects or other reproductive harm (Proposition 65 warning).

## PACKAGE CONTENTS

---

Carefully unpack your fixture and check that all parts are included. If any parts are missing or damaged, contact customer service before proceeding with assembly.

- Chandelier body with light sockets
- Mounting canopy
- Mounting hardware (crossbar, screws, wire nuts)
- Downrods (four 6" and four 12" sections)
- Chain links

- Instruction manual

## TOOLS REQUIRED FOR INSTALLATION

---

- Phillips head screwdriver
- Flathead screwdriver
- Wire strippers
- Pliers
- Electrical tape
- Ladder

## SETUP AND INSTALLATION

---

Follow these steps to properly install your chandelier. It is recommended to have two people for installation due to the size and weight of the fixture.

1. **Turn off Power:** Before starting, ensure the power to the junction box is turned off at the circuit breaker or fuse box.
2. **Prepare Mounting Plate:** Attach the mounting crossbar to the junction box using the provided screws. Ensure it is securely fastened.
3. **Determine Hanging Height:** Assemble the desired length of downrods by screwing them together. The fixture comes with four 6-inch and four 12-inch downrods, allowing for adjustable hanging height. Feed the fixture wires through the downrods and canopy.
4. **Connect Wires:** Carefully connect the fixture's electrical wires to the corresponding wires in the junction box. Connect the black (live) wire from the fixture to the black (live) wire from the junction box, the white (neutral) wire from the fixture to the white (neutral) wire from the junction box, and the bare copper or green (ground) wire from the fixture to the bare copper or green (ground) wire from the junction box. Secure connections with wire nuts and wrap with electrical tape for added safety.
5. **Mount Canopy:** Carefully push the wired connections into the junction box. Position the canopy against the ceiling, aligning the mounting holes with the screws on the crossbar. Secure the canopy with the decorative nuts or screws provided.
6. **Install Bulbs:** Screw sixteen B10 candelabra base bulbs (not included) into the sockets. Do not exceed the maximum wattage of 40 watts per bulb.
7. **Restore Power:** Once installation is complete, turn the power back on at the circuit breaker or fuse box.



Figure 2: Detail of the mounting canopy and adjustable chain.



Figure 3: Close-up of the candelabra base light sockets.

## OPERATING INSTRUCTIONS

---

This chandelier operates with a standard wall switch. For optimal light control, this fixture is compatible with most dimmer switches. Ensure that any dimmer switch used is rated for the total wattage of the installed bulbs.

- **Bulb Type:** Uses sixteen candelabra base B10 bulbs.
- **Maximum Wattage:** 40 watts per bulb.
- **Dimmer Compatibility:** Compatible with standard incandescent or LED dimmer switches, depending on the bulb type used.

## MAINTENANCE

---

Regular maintenance will help preserve the appearance and functionality of your chandelier.

- **Cleaning:** To clean, wipe the fixture with a soft, dry cloth. Do not use abrasive cleaners, polishes, or solvents as they may damage the finish.
- **Bulb Replacement:** Always turn off the power to the fixture at the circuit breaker before replacing bulbs. Allow bulbs to cool completely before touching them.
- **Inspection:** Periodically check all connections and mounting hardware to ensure they remain secure.

## TROUBLESHOOTING

---

If your chandelier is not functioning correctly, refer to the following common issues and solutions:

Problem	Possible Cause	Solution
Light does not turn on	1. Power is off 2. Loose wiring connection 3. Faulty bulb	1. Check circuit breaker/fuse 2. Check wiring connections (ensure power is off) 3. Replace bulb(s)
Lights flicker	1. Loose bulb 2. Incompatible dimmer switch 3. Loose wiring	1. Tighten bulb(s) 2. Ensure dimmer is compatible with bulb type 3. Check wiring connections (ensure power is off)
Humming sound	Incompatible dimmer switch or bulb type	Replace dimmer switch with a compatible one or use different bulb type

## SPECIFICATIONS

Brand	Quoizel
Model Number	COD139MBK
Dimensions (L x W x H)	39"L x 10.5"W x 13"H
Weight	11 lbs
Finish	Matte Black
Material	Alloy Steel
Number of Lights	16
Bulb Type	Candelabra Base (B10)
Max Wattage per Bulb	40 Watts
Total Wattage	640 Watts (16 x 40W)
Downrods Included	Four 6" and Four 12"
Sloped Ceiling Adaptable	Yes
Room Type	Kitchen, Dining Room

## PLACEMENT GUIDELINES

Consider these general guidelines for optimal placement of your island chandelier:



Figure 4: Linear pendant placement over an island. The fixture

should be approximately 2/3 the length of the island.



Figure 5: Multiple pendant placement over an island. Maintain 30-inch minimum spacing between fixtures and 30-36 inches above the surface.

## WARRANTY

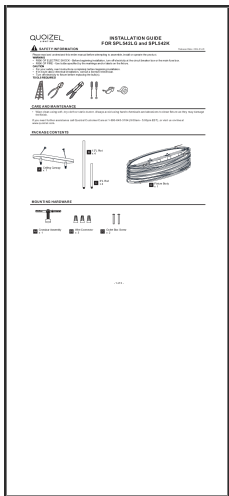
This Quoizel product comes with a **1-Year Warranty on Electronics** and a **2-Year Warranty on Finish** from the date of purchase. Please retain your proof of purchase for warranty claims. This warranty covers defects in materials and workmanship under normal use.

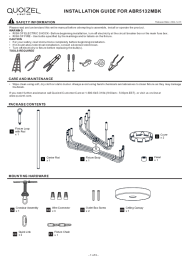
## SUPPORT

For further assistance, technical support, or to inquire about replacement parts, please contact Quoizel customer service. You can find more information and contact details on the official Quoizel website or through your retailer. Visit the [Quoizel Store on Amazon](#) for additional products and information.

© 2023 Quoizel. All rights reserved.

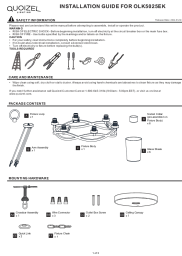
## Related Documents - COD139MBK

	<p><a href="#">Quoizel SPL542LG and SPL542K Installation Guide</a></p> <p>This installation guide provides step-by-step instructions for assembling and installing the Quoizel SPL542LG and SPL542K lighting fixtures. It includes essential safety warnings, required tools, package contents, mounting hardware details, and maintenance tips. Ensure proper electrical safety and consult a licensed electrician if needed.</p>
--	--



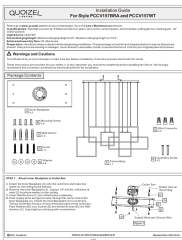
[Quoizel ABR5132MBK Installation Guide for Abner Chandelier](#)

Step-by-step installation guide for the Quoizel ABR5132MBK Abner 18-light matte black chandelier. Includes safety information, package contents, mounting hardware, and wiring instructions.



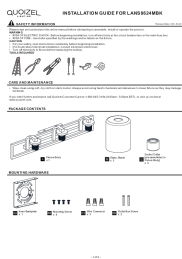
[Quoizel OLK5025EK Overlook 6-Light Chandelier Installation Guide](#)

Official installation guide for the Quoizel OLK5025EK Overlook 6-Light Earth Black Chandelier with Clear Seedy Glass Shade. Includes safety information, package contents, mounting hardware, and step-by-step assembly instructions.



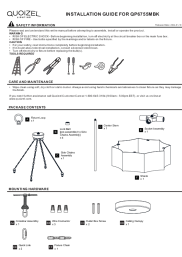
[Quoizel PCCV157BRA and PCCV157WT Installation Guide](#)

Detailed installation guide for Quoizel PCCV157BRA and PCCV157WT chandeliers, including parts list, tools required, and step-by-step assembly instructions for safe and proper installation.



## Quoizel LANS8624MBK Installation Guide

Step-by-step installation guide for the Quoizel LANS8624MBK vanity light fixture, including safety information, package contents, and mounting instructions.



## Quoizel QP6755MBK Zylar Matte Black 4-Light Pendant Installation Guide

Comprehensive installation guide for the Quoizel QP6755MBK Zylar 4-light matte black pendant ceiling light. Includes safety warnings, package contents, mounting hardware, and step-by-step assembly instructions.