

Tackform TF-AR-09

Tackform Enduro Series 3.5-inch Aluminum Dual Articulating Arm

Brand: Tackform | Model: TF-AR-09

1. PRODUCT OVERVIEW

The Tackform Enduro Series 3.5-inch Aluminum Dual Articulating Arm is designed for versatile device mounting. It features dual articulating 20mm ball sockets and thumbscrews for quick and precise adjustments. This arm is a core component of the Tackform Enduro Series, an ecosystem of mounting solutions.

- **Compatibility:** Fully compatible with all Tackform Enduro Series 20mm components, including suction cups, table clamps, headrest clamps, and various device holders (phones, tablets, action cameras).
- **Construction:** Constructed entirely from aluminum for durability and strength. Thumbscrews are made of ABS Plastic.
- **Length:** Total arm length is 3.5 inches.
- **Articulation:** Dual ball and socket joints provide multiple points of articulation for optimal device positioning.
- **Versatility:** Can be used to replace existing arms for different lengths or to add articulation points with ball-to-ball adapters.

2. COMPONENTS

The Tackform Dual Articulating Arm consists of a central aluminum arm with two 20mm ball sockets at each end. Each socket is secured by a thumbscrew for independent adjustment.



Figure 1: The Tackform 3.5-inch Aluminum Dual Articulating Arm.



3.5"



Figure 2: The 3.5-inch length of the articulating arm.

COMPATIBLE WITH 20MM ENDURO SERIES COMPONENTS



ENDURO SERIES



SUPPORTS 20MM
BALL SYSTEM



ALL METAL
DESIGN



Figure 3: The arm is compatible with 20mm Enduro Series components.

3. SETUP AND INSTALLATION

To set up your Tackform Dual Articulating Arm, follow these steps:

1. **Loosen Thumbscrews:** Gently loosen the thumbscrews on both ends of the arm to allow the ball sockets to open.
2. **Insert Ball Mounts:** Insert your desired 20mm ball mounts (e.g., a base mount and a device holder) into each socket. Ensure the balls are fully seated within the sockets.
3. **Tighten Thumbscrews:** Hand-tighten the thumbscrews to secure the ball mounts. Do not overtighten.
4. **Adjust Position:** Loosen one thumbscrew slightly to adjust the angle of that specific ball joint. Once the desired angle is achieved, re-tighten the thumbscrew. Repeat for the other joint if necessary.

For a visual guide on attaching and securing the arm, please refer to the official product overview video

below.

Video 1: Official product overview of Tackform DuraLock Arms, demonstrating assembly and security features.

Additional demonstrations of 20mm ball arm functionality can be seen in the following videos:

Video 2: Demonstration of a 20mm double socket arm, showing how to attach and secure a device.

Video 3: Detailed look at the FANAUE DA-60M Aluminum 20mm Ball Head Double Socket Arm, highlighting its design and clamping mechanism.

4. OPERATION

The dual articulating design allows for flexible positioning of your mounted device. Each thumbscrew independently controls the tightness of its respective ball socket, enabling precise adjustments without affecting the other joint.



Figure 4: The arm allows for 180-degree rotation at each joint.



Figure 5: The ball joints enable full 360-degree rotation for optimal viewing angles.

To adjust the arm:

1. **Loosen:** Turn the desired thumbscrew counter-clockwise to loosen the grip on the ball.
2. **Position:** Adjust the angle and orientation of the attached device or base.
3. **Secure:** Turn the thumbscrew clockwise to tighten and secure the ball in its new position. Ensure it is firm to prevent movement during use.

SAMPLE USES



Figure 6: The arm can be used in various configurations, such as mounting an action camera or a tablet.

5. MAINTENANCE

To ensure the longevity and optimal performance of your Tackform Dual Articulating Arm, consider the following maintenance tips:

- **Cleaning:** Wipe the aluminum arm and ABS plastic thumbscrews with a soft, damp cloth to remove dust and grime. Avoid abrasive cleaners or solvents that could damage the finish.
- **Inspection:** Periodically inspect the arm and thumbscrews for any signs of wear, damage, or loosening.
- **Tightness:** Ensure all thumbscrews are adequately tightened before each use to prevent accidental movement or detachment of your device.

6. TROUBLESHOOTING

If you encounter any issues with your Tackform Dual Articulating Arm, please consider the following:

- **Arm does not hold position:** Ensure both thumbscrews are fully tightened. If using a rubberized ball, confirm it is properly seated within the socket.

- **Difficulty adjusting:** Loosen the thumbscrews sufficiently to allow free movement of the ball joints. If the arm is new, it may require a few adjustments to loosen up.
- **Compatibility issues:** Verify that all connected components are 20mm ball compatible. This arm is specifically designed for 20mm ball systems.


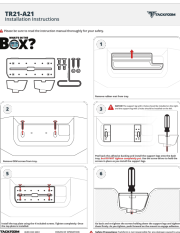
7. SPECIFICATIONS

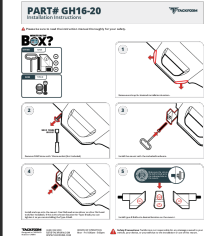
Package Dimensions	6.54 x 4.13 x 0.51 inches
Item Weight	3.87 ounces
ASIN	B083LCYLWG
Item Model Number	TF-AR-09
Special Features	Arm
Other Display Features	CE
Color	Black
Manufacturer	Tackform
Date First Available	January 7, 2020
Compatible Devices	Tablets
Compatible Phone Models	All
Mounting Type	Clamp Mount, Phone Mount

8. WARRANTY AND SUPPORT

This product is manufactured by Tackform. For any warranty claims, technical support, or product inquiries, please contact Tackform directly through their official customer service channels. Refer to the product packaging or the Tackform website for the most current contact information.

Related Documents - TF-AR-09

	ACKFORM PUCK WIRELESS CHARGER TF-W01 User Manual Qi Charging Official user manual for the ACKFORM PUCK WIRELESS CHARGER, model TF-W01. Provides essential information on product specifications, important safety notes, and FCC compliance requirements for this Qi-compatible wireless charger.
	TACKFORM TR21-A21 Installation Instructions for Vehicle Mounts Comprehensive installation guide for the TACKFORM TR21-A21 Assault Track mount. Includes parts list, step-by-step assembly, optional rail installation, and fitment details for RAM trucks.



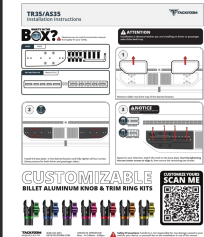
[Tackform GH16-20 Installation Guide for Jeep Wrangler JL & Gladiator](#)

Step-by-step instructions for installing the Tackform GH16-20 mount, designed for Jeep Wrangler JL and Gladiator models, including component identification and safety precautions.



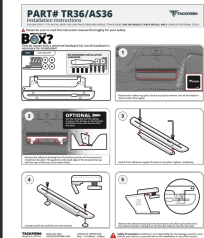
[Tackform Duralock™ Accent Kit: Installation & Compatibility Guide](#)

Comprehensive installation instructions and compatibility guide for the Tackform Duralock™ Accent Kit, detailing setup steps and compatibility with various DuraLock™ arm models.



[Tackform TR35/AS35 Installation Instructions for Dash Mounts](#)

A comprehensive guide detailing the installation of Tackform's TR35/AS35 dash mount and customizable billet aluminum knob & trim ring kits. Includes parts list, step-by-step instructions, and safety information for Jeep Wrangler JL and Gladiator models.



[Tackform TR36/AS36 Installation Instructions for Slim Track and Assault Track](#)

Step-by-step installation guide for Tackform's TR36 Slim Track and AS36 Assault Track dash mounts, including hardware details and safety precautions.